

Euclid™ Lifting Magnet Controller

4296

Resistor Type Manual Discharge

Specifications 4296 • March 2004 • Replaces July 1998

Features

- Front-Wired Front-Removable components.
- Mechanically interlocked "LIFT" and "DROP" contactors.
- Permanently connected discharge path completely independent from the line.
- High-Thermal capacity resistor discharge path.
- Peak magnet induced voltage limited to 600 volts.
- Long electrical contact life.
- Minimum Maintenance.
- Dribble control - Standard.
- Ventilated NEMA 3R Enclosure.



Application

The Euclid Type 4296 Lifting Magnet Controllers are suited for many uses from light scrap handling to the handling of heavy billets or plates. It may be used with all types and makes of dc lifting magnets.

Description

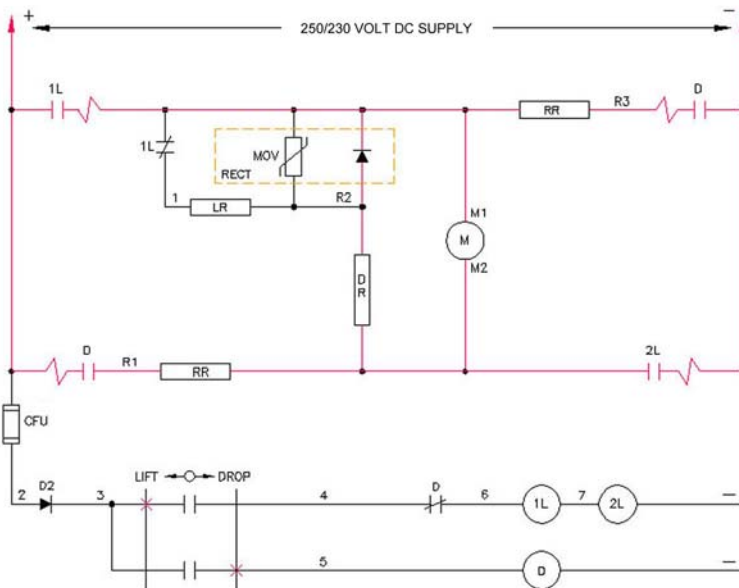
The Euclid Type 4296 Magnet Controllers incorporate heavy duty time proven components arranged to provide optimum control of your lifting magnets.

A mechanically rugged high thermal capacity discharge resistor assembly is permanently connected in parallel with the magnet and provides a safe discharge path for the stored magnetic energy. With Euclid magnet controllers, induced volts cannot return to the line, permitting rectified power supplies to be used without the added expenses of special protective loads or by-pass circuits.

Manual Discharge Type Controller

The Euclid Type 4296 Manual Discharge Type Lifting Magnet Controller provides for optimum operator control over the release of magnet loads.

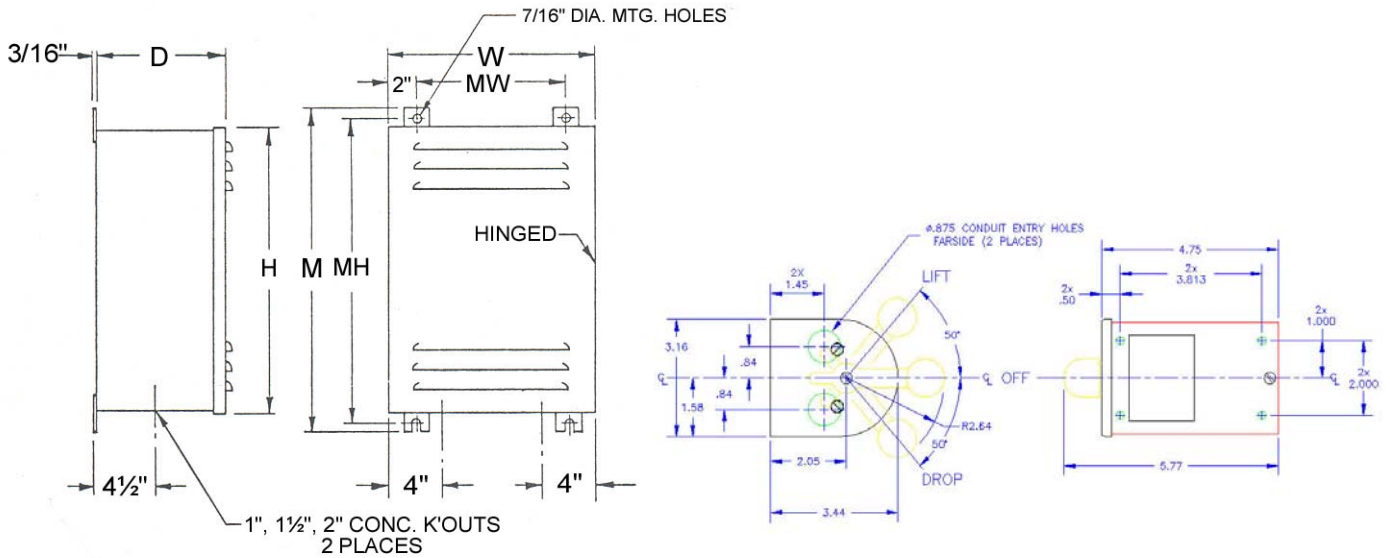
The Manual Discharge Type Controller is controlled via a three (3) position master switch, which places the full control of the "Lift", "Fan" and "Clean" functions directly under the control of the operator. The Manual Discharge Type of controller is best suited for applications requiring accurate load control rather than operational speed.



SYMBOL	FUNCTION	SYMBOL	FUNCTION
CFU	CONTROL FUSE	DR	DISCHARGE RESISTOR
RR	REVERSE CURRENT RESISTOR	LR	FORCING RESISTOR (IF USED)
D2	DIODE	D	DROPPING CONTACTOR
D1	RECTIFIER, MAGNET DISCHARGE PATH	1L, 2L	LIFT CONTACTOR
MOV	SURGE SUPPRESSOR		



APPROXIMATE DIMENSIONS & WEIGHTS
DO NOT USE FOR CONSTRUCTION PURPOSES



CABINET OUTLINE SIZE 1, 2 & 3

J2M92B

Full Voltage Controllers

SIZE	W	H	D	M	MW	MH	NET WT.
1C	16.37"	12.00"	11.00"	14.00	9.50"	12.64"	Consult Factory
1	16.12"	21.90"	10.00"	24.25"	11.50"	23.00"	
2	16.12"	21.90"	10.00"	24.25"	11.50"	23.00"	
3	19.12"	27.90"	14.25"	30.25"	14.50"	29.00"	

FULL VOLTAGE MANUAL DISCHARGE TYPE

Size	System Voltage	Control Voltage	Magnet Current	Part Number	Minimum Cold Magnet Ohms	Maximum Cold Magnet Ohms
1C	300 Max.	12	7.0 - 13	91907-XXX	19.23	32.8
1C	300 Max.	24	7.0 - 13	91907-XXX	19.23	32.8
1C	300 Max.	12	13 - 25	91907-003	10.00	17.7
1C	300 Max.	24	13 - 25	91907-XXX	10.00	17.7

PILOT DEVICES & ACCESSORIES ADDITIONS FOR MAGNET CONTROLLER

DESCRIPTION	PART NUMBER
Type 4212, Cat. No. M-92B, NEMA 1 enclosed Master Switch (Standard "Lift-Off-Drop").	J2M92B
Type 4211, Catalog No. 4211-1164M/SIFXI "Lift-Drop" NEMA 1 Flush Mounting Master Switch.	4211-99848-003
Type 2001, Catalog No. S-N "Lift-Drop" NEMA 1 Maintained/Momentary Surface Mounting Push Button Station.	(Consult Factory)

SPARE PARTS KIT (SEE PRICE LIST 1200)

Used With Magnet Controller Part Number	Spare Parts Kit Part Number	Spare Parts Kit Includes: ¹
4296-91827-XXX 4296-91907-XXX	59401-410	1 - Set of Contacts, Springs and Coil for "Lift" Contactor.
4296-91828-XXX	59401-411	1 - Set of Contacts, Springs and Coil for "Drop" Contactor.
4296-91829-XXX 4296-91830-XXX	59401-012	1 - Polarity Sensing Rectifier. 1 - Auxiliary Contact Assembly for "Drop" or "Lift" Contactor.

¹ Except Size 1 and 2 Controllers. Kit Includes (1) Coil for both lift and drop Contactors.



Hubbell Industrial Controls, Inc.

A subsidiary of Hubbell Incorporated

4301 Cheyenne Dr., Archdale, NC. 27263
Telephone (336) 434-2800 • FAX (336) 434-2803
<http://www.hubbell-icd.com>
Sales@hubbell-icd.com

Free Manuals Download Website

<http://myh66.com>

<http://usermanuals.us>

<http://www.somanuals.com>

<http://www.4manuals.cc>

<http://www.manual-lib.com>

<http://www.404manual.com>

<http://www.luxmanual.com>

<http://aubethermostatmanual.com>

Golf course search by state

<http://golfingnear.com>

Email search by domain

<http://emailbydomain.com>

Auto manuals search

<http://auto.somanuals.com>

TV manuals search

<http://tv.somanuals.com>