

iHome™

IH-W355NB
IH-W356NP

MyLife™ notebook webcam pro
5.0 megapixel max resolution



user manual

Congratulations on the purchase of your new **MyLife notebook webcam pro**. This product comes with a limited lifetime warranty.

Before using your product, please thoroughly read and follow the instructions inside this manual.

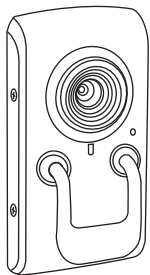
If you still need help, see the back page for other support options.

If you want to know more about our products, visit us online at www.life-works.com.

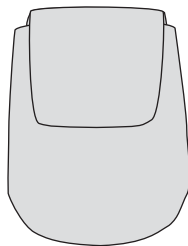
system requirements

- Windows® XP Service Pack 2 or Windows Vista®
- USB port (a USB 2.0 port is required for optimal performance)
- CD-ROM drive

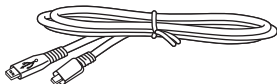
your package should contain



MyLife notebook webcam pro



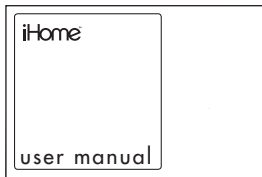
travel pouch



USB cable



ArcSoft Magic-i™ and
WebCam Companion®
installation CD



user manual
(in your hands right now)

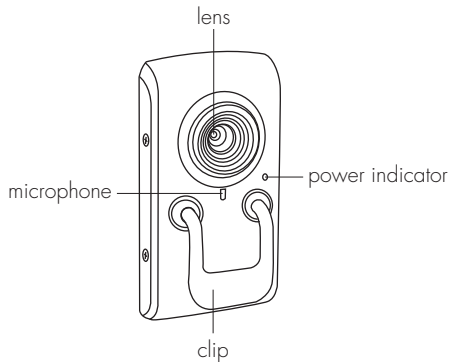
user manual contents

- features • 2
- your new webcam • 3
- install software • 3
- connect hardware • 4
- use your webcam • 4
- advanced features • 5
- special effects • 8
- product operating tips • 10
- troubleshooting • 10

features

- 5.0 megapixel maximum resolution
- motion tracking
- 4x digital zoom
- built-in microphone
- adjustable notebook mount

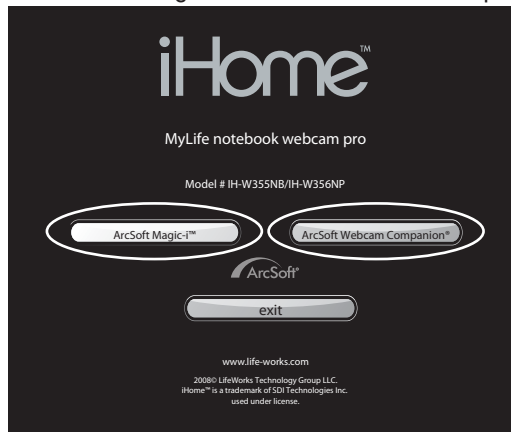
your new webcam



- **note** You must install the software before connecting your webcam to your computer.

install software

1. Insert the installation CD into your computer. On the screen that appears, click the application you want to install: **ArcSoft Magic-i** or **ArcSoft WebCam Companion**.

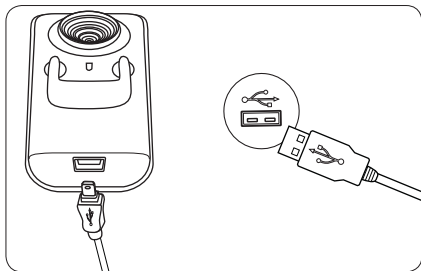


2. Select a language and click **OK**.
3. An **InstallShield Wizard** dialog box displays. Click **Next**. Click **Yes** to accept the license agreement, then click **Next** to accept the default installation location.

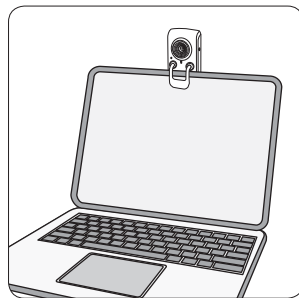
4. A **Select Program Folder** dialog box displays. Click **Next**.
5. After the application finishes installing, an **InstallShield Wizard Complete** dialog box displays. Click **Finish** to exit the wizard.
6. The main software installation screen displays again.
Repeat the above steps to install the other application. Click **exit** on the main software installation screen when done.

connect hardware

1. Connect the USB cable between the bottom of your webcam and a USB port on your computer.



2. Clip the webcam onto the top of your notebook's screen.



use your webcam

You can start using your webcam immediately for video conferencing with one of the many video conferencing services available over the internet. Additional features are available through the included ArcSoft WebCam Companion and Magic-i software applications.

advanced features

Click **Start > All Programs > ArcSoft WebCam Companion 2 > WebCam Companion 2** to open the **Start Page**.



capture still shots or video

1. On the **Start Page**, click **Capture**. The **Capture** window displays.

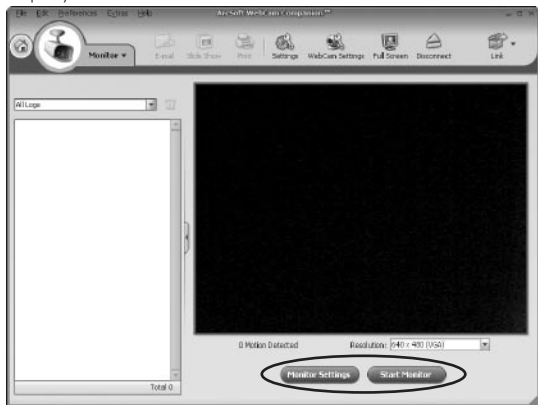


- For a still shot, click **Capture**.
- To record a video clip, click **Record Video**. When done, click **Stop Recording**.

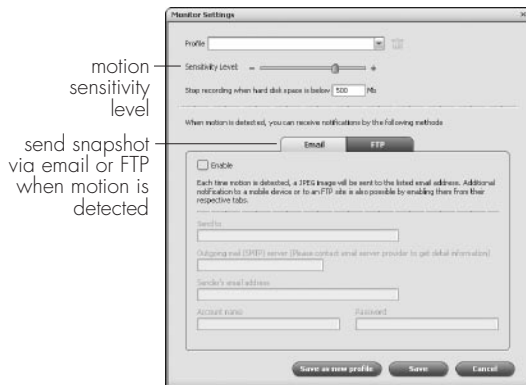
monitor an area

ArcSoft WebCam Companion allows you to use your webcam to monitor an area, recording video when there is any motion in the area. To monitor an area:

1. On the **Start Page**, click **Monitor**. The **Monitor** window displays.



2. Click **Monitor Settings** to configure your monitor. Click **Save** when done.



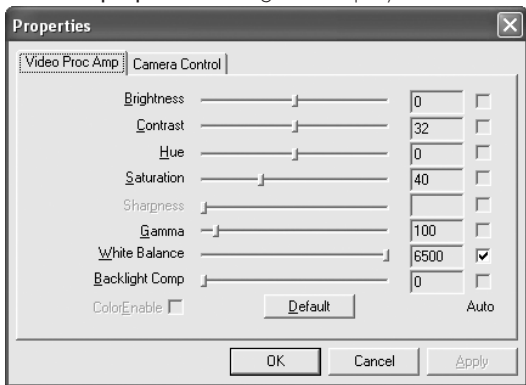
3. Click **Start Monitor** to begin monitoring. The monitor will record video whenever it detects motion. Click **Stop Monitor** to end the monitoring session.

change video settings

To change video settings and access other webcam settings, click the **WebCam Settings** button in the Capture window (see "capture still shots or video" on page 5) or the Monitor window (see "monitor an area" on page 6).



The **webcam properties** dialog box displays.

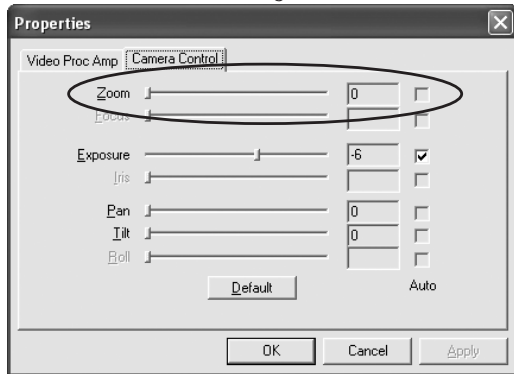


Here you can change image, video and camera settings.

zoom

Your webcam can zoom in as much as 4x. To change the zoom level when using ArcSoft WebCam Companion:

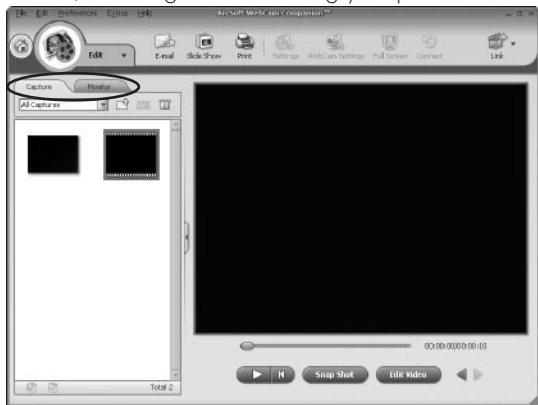
1. Click the **WebCam Settings** button in the Capture or Monitor window (see "change video settings" on page 7).
2. The **webcam properties** dialog box displays. Select the **Camera Control** tab.
3. Click and drag the **Zoom** slider to change the zoom level, left to zoom out and right to zoom in.



4. Click **OK**.

view and edit still shots and video

To view the still shots or video you have captured, click **Edit** on the **Start Page**. Here you can also edit your still shots and video, including auto enhancing your photos.



Click the **Capture** tab for recordings made from the Capture window (see “capture still shots or video” on page 5). Click the **Monitor** tab for recordings made by the webcam monitor (see “monitor an area” on page 6).

special effects

Click **Start > All Programs > ArcSoft Magic-i 3 > Magic-i 3** to open the **Effects Page**.



Use this page to configure all special effects.

Before beginning, select your webcam (**USB Video Device**) at the top of the window.



zoom face tracking

zoom

Your webcam can zoom in as much as 4x. To change the zoom level when using special effects in ArcSoft Magic-i, click the zoom buttons underneath the picture.

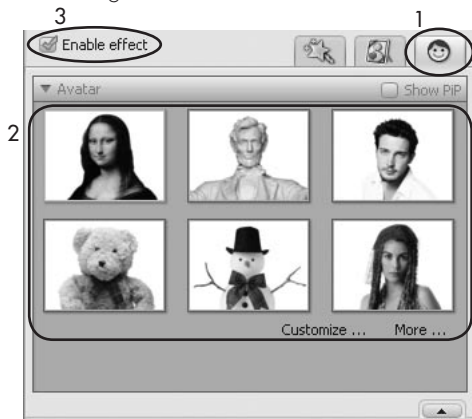
turn on face tracking

Face tracking keeps the camera trained on a person's face without mechanically moving the camera if the person moves around in the chair. To turn on face tracking, click the face tracking button underneath the picture.

use an avatar

An avatar is an image you use as your personal representation online. Instead of your face showing, your avatar displays. To use an avatar:

1. In ArcSoft Magic-i, select the **Avatar** tab.

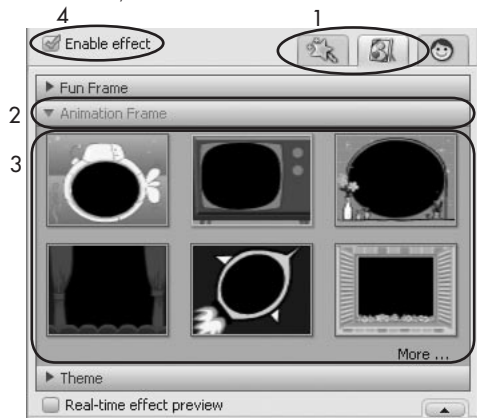


2. Select an avatar.
3. Select **Enable effect**.

use other special effects

Various other special effects are available under the **Effect** and **Illustration** tabs. To turn on a special effect:

1. Select either the **Effect** or **Illustration** tab, depending on the effect you want. The Effect tab gives you various image effects, and the Illustration tab gives you different picture frames you can use.



2. Select a subcategory by clicking its title bar.
3. Select the effect you want.
4. Select **Enable effect**.

product operating tips

- Your webcam operates best if you sit about 3 ft. (1 m) from the camera. This ensures the picture is not distorted and that the microphone can easily pick up your voice.
- Click **Help > Application Help** in ArcSoft WebCam Companion or the question mark at the top right of the ArcSoft Magic-i window for more details on how to use each application with your webcam.

troubleshooting

situation	try this
no video is displayed	<ul style="list-style-type: none">• Ensure the webcam is connected to the computer.• Use a different USB port.• Connect the webcam to a USB port on the computer, not a USB hub.• Uninstall and reinstall the software. To uninstall the software, click Start > Control Panel > Add or Remove Programs, select the application (ArcSoft Magic-i 3 or ArcSoft WebCam Companion 2) and click Change/Remove.
video stutters or stops	<ul style="list-style-type: none">• Disconnect and reconnect the webcam.• Ensure the webcam is connected to a USB 2.0 port (not a slower USB 1.1 port).

FCC Statement

This device complies with part 15 of FCC Rules. Operation is subject to the following two conditions: (1) this device may not cause harmful interference, and (2) this device must accept any interference received, including interference that may cause undesired operation. This equipment has been tested and found to comply with the limits for a Class B digital device, pursuant to part 15 of FCC Rules. These limits are designed to provide reasonable protection against harmful interference when the equipment is operated in a residential installation. This equipment generates, uses, and can radiate radio frequency energy and, if not installed and used in accordance with the instruction guide, may cause harmful interference to radio communications. However, there is no guarantee that interference will not occur in a particular installation. If this equipment does cause harmful interference to radio or television reception, which can be determined by turning the equipment off and on, the user is encouraged to try to correct the interference by one or more of the following measures:

- Reorient or relocate the receiving antenna.
- Increase the separation between the equipment and the receiver.
- Connect the equipment into an outlet on a circuit different from that to which the receiver is connected.

Consult a service representative for help.

Properly shielded and grounded cables and connectors must be used in order to comply with FCC emission limits. LifeWorks is not responsible for any radio or television interference caused by using other than recommended cables and connectors or by unauthorized changes or modifications to this equipment. Unauthorized changes or modifications could void the user's authority to operate the equipment.

Responsible party:

LifeWorks Technology Group LLC
1412 Broadway
New York, NY 10018

Warning

Improper setup, use and care of this product can increase the risk of serious injury, death or device damage. Read and keep this guide and all other printed guides for future reference. For updated guides or replacements, go to www.life-works.com

Do Not Attempt Repairs

Do not attempt to take apart, open, repair, service or modify the device(s). Doing so may risk electric shock or other hazard. Evidence of any attempt to open or modify the device, including any peeling, puncture or removal of labels, will void the Limited Lifetime Warranty.

Printed in China

© 2008 LifeWorks Technology Group LLC.

iHome™ is a trademark of SDI Technologies Inc. used under license.

Windows Vista® is a registered trademark or trademark of Microsoft Corporation in the United States and/or other countries.

All other brands and logos are trademarks of their respective companies.

technical support

for technical support please visit

www.life-works.com

or call (877) LIFE-540

(877-543-3540)

lifetime warranty

for warranty information, please visit

www.life-works.com/warranty

for model numbers

IH-W355NB

IH-W356NP

document version number 0811-0

Free Manuals Download Website

<http://myh66.com>

<http://usermanuals.us>

<http://www.somanuals.com>

<http://www.4manuals.cc>

<http://www.manual-lib.com>

<http://www.404manual.com>

<http://www.luxmanual.com>

<http://aubethermostatmanual.com>

Golf course search by state

<http://golfingnear.com>

Email search by domain

<http://emailbydomain.com>

Auto manuals search

<http://auto.somanuals.com>

TV manuals search

<http://tv.somanuals.com>