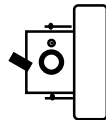


4) Wall Mount, aim to left:

Remove the iron case from the supporting bracket by using screw driver to loosen the two screws, which connect the iron case to the supporting bracket. Turn the iron case in 90-degree and mount into the supporting bracket again by changing the screw holes in order to keep the screw indicator on the top side.



IV. Specifications

	<u>ED120</u>	<u>ED200</u>
Pickup Device:	1/3 inch B/W interline transfer CCD	1/3 inch Color interline transfer CCD
Picture Element:	510 x 492 (EIA) 500 x 580 (CCIR)	510 x 492 (NTSC) 500 x 580 (PAL)
Horizontal resolution:	420 TV lines (EIA) 400 TV lines (CCIR)	380 TV lines (NTSC) 340 TV lines (PAL)
Sensitivity:	0.04 lux/F=2.0	2.5 lux/F=2.0
S/N ratio:	Over 48 dB	Over 48dB
Electronic shutter:	Up to 1/100,000	Up to 1/100,000
Gamma Correction:	> 0.45	0.45
Video output:	1.0Vp-p,75 ohm	1.0Vp-p,75 ohm
Audio Output:	Yes	---
Power source:	12VDC+/-10%, 150mA Max.	12VDC+/-10%, 250mA Max.
Sync. Mode:	Internal Sync.	Internal Sync.
Lens Mount:	M12 x P0.5	M12 x P0.5
Dimension:	106mm Dia x 85mm H.	106mm Dia x 85mm H.
Operating Temperature:	-10° C to +50° C	-10° C to +50° C

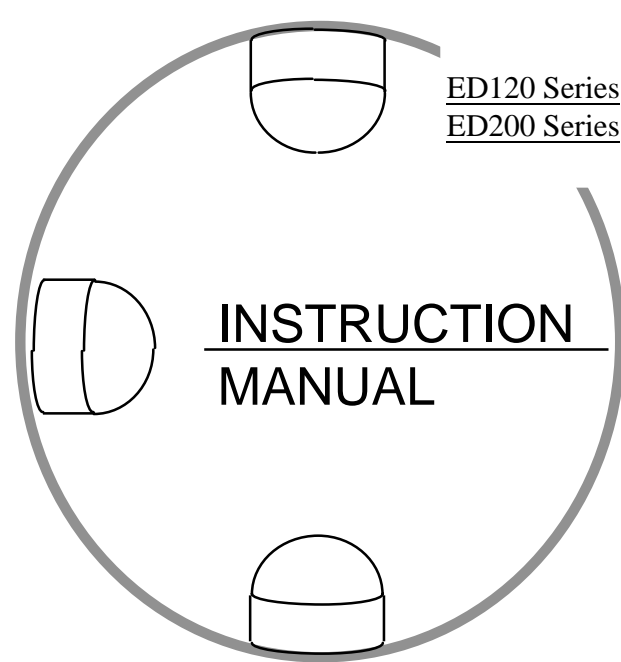
4 Connect the video output of the camera (yellow line) to a B/W monitor (ED120) or a color monitor (ED200), or other video device through a 75 ohm type coaxial cable with BNC female connector at cable extension.

5 Connect the DC+12V regulated power source of the camera (red line) to the DC12V Power-in jack with 2mm, center+, outer- plug.

6 Connect the ground of the camera (black line) to the ground.

7 Connect the audio output of the camera (white line) for EM120 to the audio connector of the monitor.

8 Put the plastic cover back on the Dome Camera.



I. General

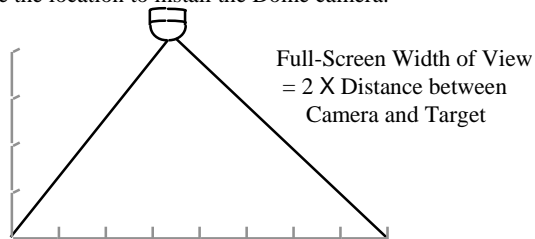
The ED120 & ED200 Series Camera are compact, full featured CCD Camera. Their stylish appearance can be applied as per installer's ideal locations. These dome camera can be mounted either on the ceiling or on the wall easily. ED120 used high sensitive 1/3" B/W interline transfer CCD sensor and ED200 used high sensitive 1/3" color interline transfer CCD sensor. Both sensors are featured with Auto Electronic Shutter, Automatic Gain Control, and ED200 includes Auto White Balance function.

II. Precautions

- Do not expose the camera to humidity and dust. Outdoor application without shielding is not recommended.
- Handle with care. This camera consists of sensitive high precision parts. Do not disassemble or install it on an unstable base.
- Operate on DC+12V. Use a regulated power source only.
- Never face the camera toward the sun directly.

III. Installation Instructions

- 1) The Dome camera's horizontal angle of view is 92-degree. Decide the location to install the Dome camera.



- 2) In application, the dome camera can be installed as the following four (4) positions :

1) Ceiling Mount



2) Floor Mount



3) Wall Mount, aim to right



4) Wall Mount, aim to left

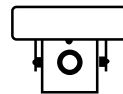


Download from www.Sematerials.com. All Manuals Search And Download.

- 3) Remove the plastic dome cover. In order to get the correct picture, please always keep the screw indicator of the iron case on the top side.

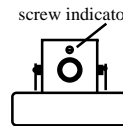
1) Ceiling Mount :

The dome camera are set in the actual position when the shipment is made. they are ready to be installed.



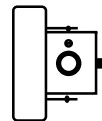
2) Floor Mount :

Rotate the iron case in 180-degree so that the screw indicator is on the top side.



3) Wall Mount, aim to right :

Remove the iron case from the supporting bracket by using screw driver to loosen the two screws, which connect the iron case to the support bracket. Turn the iron case in 90-degree and mount into the supporting bracket again by changing the screw holes in order to keep the screw indicator on the top side.



Free Manuals Download Website

<http://myh66.com>

<http://usermanuals.us>

<http://www.somanuals.com>

<http://www.4manuals.cc>

<http://www.manual-lib.com>

<http://www.404manual.com>

<http://www.luxmanual.com>

<http://aubethermostatmanual.com>

Golf course search by state

<http://golfingnear.com>

Email search by domain

<http://emailbydomain.com>

Auto manuals search

<http://auto.somanuals.com>

TV manuals search

<http://tv.somanuals.com>