



DH200 Series Digimerge Touch DVR

QUICK SETUP GUIDE

PACKAGE CONTENTS:

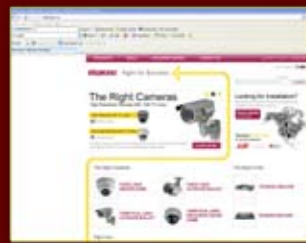
- 1 x DIGITAL VIDEO RECORDER WITH PRE-INSTALLED HDD*
- 1 x POWER ADAPTOR
- 1 x REMOTE CONTROL
- 1 x MOUSE
- 1 x USER MANUAL
- 1 x QUICK START GUIDE
- 1 x SOFTWARE CD

ATTENTION:

- * Channel/ Port configuration and HDD (hard disk drive) capacity may vary by model. Check your package for specific content information.
- Monitor and Cameras are not included.
- Ethernet Cable, Broadband Router and Computer are required for local and remote monitoring (not included).
- For detailed setup and software information, please refer to your printed User's manual (included).

It's all on the Web www.digimerge.com

Toll free tech support available after completing product registration. For more information on this product, firmware updates, warranty and accessory products, please visit us at: www.digimerge.com



Information in this document is subject to change without notice. As our products are subject to continuous improvement, Digimerge Technology Inc. reserve the right to modify product design, specifications and prices, without notice and without incurring any obligation. E&OE © 2009 Digimerge. All rights reserved.

BASIC SETUP

BASIC INSTALLATION GUIDE

Time: 20 Minutes | Hand Tools | Skills - Easy

STEP 1



Connecting Cameras (not included)

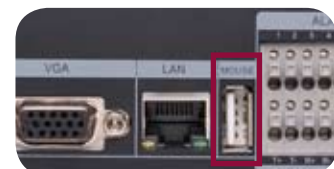
- 1 Connect up to eight BNC cameras to the BNC ports on the rear panel.

NOTE: Test the cameras prior to selecting a permanent mounting location by temporarily connecting the Cameras and Cables to your DVR.



Connecting the USB Mouse

- 2 Connect a mouse (USB/PS2 compatible) to the USB port on the rear panel.



MOUSE TIPS

When using the mouse, the ENTER and EXIT buttons appear in the top-right corner of every menu window. When you change system settings and configurations, click to confirm your changes.



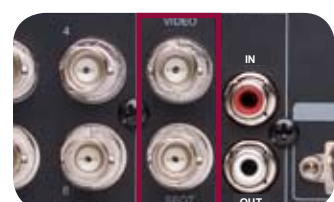
Connecting a Monitor (not included)

- 3a Connect the VGA cable (not included) from your LCD monitor to the VGA port on the rear panel of the Touch DVR.



OR

- 3b From one of the Video-Out ports connect a BNC terminated cable to a TV or CCTV monitor.



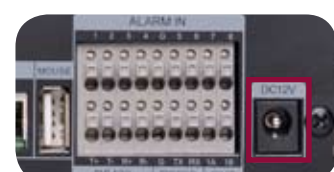
Connecting the Ethernet Cable

- 4 Connect one end of the Ethernet cable (not included) (for remote monitoring) to one of the router's (not included) LAN ports and the other end to the DVR's Network Port.



Powering ON the Touch DVR

- 5 Connect the power cable to the DC port on the rear panel of the DVR. Touch the POWER button on the front panel OR press the POWER button on the remote control. At startup, the system performs a basic system check and runs an initial loading sequence. After a few moments, the system loads a live display view.



NOTE: You will need to input your system password (by default, 000000) to power off the system. **NOTE:** Pressing the "Power" button after plugging in the power cable is only necessary for initial startup (first time out of the box).

BASIC SETUP

BASIC INSTALLATION GUIDE

Time: 20 Minutes | Hand Tools | Skills - Easy

STEP 1



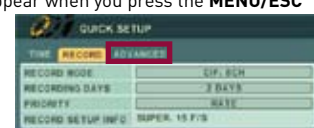
CONTINUED

Quick Setup

- 6 By default, the system has Quick Setup enabled. Quick Setup lets you quickly adjust the time and record mode on the system. The system menu will appear as the Quick Setup menu with only Time and Record options available.

Disabling Quick Setup

You must disable Quick Setup in order to access the full system main menu.
To disable Quick Setup:
1. In Quick Setup Menu under the **ADVANCED** tab, select **RUN ADVANCED**.
2. Select **ON** and press the **ENTER** button. The window closes. Quick Setup has been disabled. The full main menu will appear when you press the **MENU/ESC** button.



Managing Passwords

- 7 By default, you do not have to enter a password upon initial startup. However, you can enable this option in **MAIN MENU**→**SYSTEM**→**GENERAL**. For more details, please refer to the user's manual.

NOTE: This step refers to accessing the **MAIN MENU** without enabling the Quick Setup.

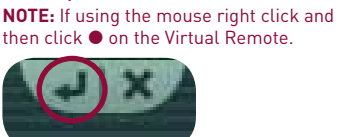
Setting the Date & Time

- 8 Stop recording (including Manual and Schedule recording) on the system by pressing on the front panel, or pressing the button on the remote control and enter your 6-digit system password (by default, 000000).
1. Press the **MENU/ESC** button to open the system menu. Select **SYSTEM** and press the **ENTER** button. The System menu opens.
2. Select the **TIME** tab.
3. Select **DATE** and enter the date (mm/dd/yyyy).
4. Select **TIME** and enter the time (hh/mm/ss).
5. Press the **ENTER** button located at the top right corner of the screen to save your changes.
6. Press on the front panel, or press the button on the remote control to resume Continuous Recording.

NOTE: It is highly recommended to set the time on the system prior to doing any recording. All recording must be stopped on the system in order to set the time. **NOTE:** If using the mouse right click and then click on the Virtual Remote.



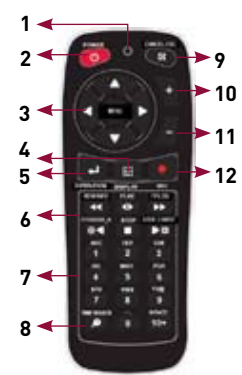
NOTE: It is highly recommended to set the time on the system prior to doing any recording. All recording must be stopped on the system in order to set the time.



Stopping Scheduled Recording: If you need to stop a recording schedule, press on the front panel or on the Remote control and enter your 6-digit system password (by default, 000000).

Using the Remote Control

- 9 **LED Indicator:** Flashes red with every button-press
- POWER:** Press to power the system ON/OFF (password required).
- Navigation/Menu**
- : Press to switch between single channel full-screen, quad, and split-screen displays.
- : Press to confirm menu options/selections.
- Playback controls**
- Channel buttons:** Press to view channels 1-8.
- : Press to open the Time Search menu.
- CANCEL/ESC:** Press to close menu windows.
- : increase values.
- : decrease menu options.
- : Press to start manual recording.



NOTE: You can use the channel buttons on the remote control to enter numbers, letters, and other characters.

NAVIGATION AND CONTROLS

BASIC INSTALLATION GUIDE

Time: 20 Minutes | Skills - Easy

STEP 2



Using the Main Menu

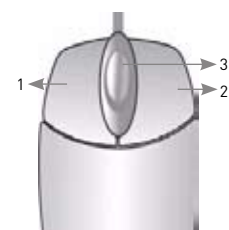
- 1 Press the **MENU/ESC** button on the front panel or the remote control.

1. **DISPLAY**
2. **CAMERA**
3. **MOTION**
4. **RECORD**
5. **ALARM**
6. **SCHEDULE**
7. **NETWORK**
8. **SYSTEM**



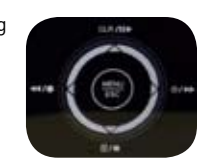
Using a Mouse

- 2 **1. Left-Button:** While in a split-screen display mode, double-click an individual channel to view it in full-screen; double-click again to return to the split-screen display mode. While navigating menus, click to select a menu option; double-click to open the next menu.
- 2. Right-Button:** Right-click anywhere on the screen to open the Virtual Remote; double-click anywhere on the screen to return to the previous menu.
- 3. Scroll-Wheel:** Move the scroll wheel up or down to increase/decrease the value of a selected menu option.



Touch Panel Tips and Tricks

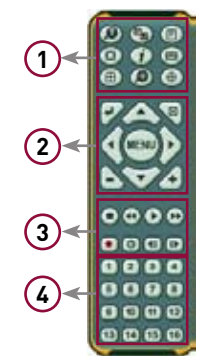
- 3 If using the Touch panel, you will often use the following buttons when controlling the system:
 - : Menu: move cursor up; Playback: pause playback; Live viewing: show/hide OSD; clear channel icons
 - : Menu: move cursor down; Playback: stop playback; Live viewing: open Log menu
 - : Menu: move cursor left; Playback: increase reverse playback speed; Live viewing: start/stop recording
 - : Menu: move cursor right; Playback: increase forward playback speed; Live viewing: start/stop scheduled recording
 - Press the **MENU/ESC** button to open the main menu and close windows.
 - Press the button to increase values for selected menu options.
 - Press the button to decrease values for selected menu options.
 - Press the button to enter/confirm.



Using the Virtual Remote

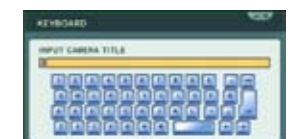
- 4 Right-click anywhere on the screen to open the Virtual Remote. The Virtual Remote gives you quick access to many of the system's features using only a USB mouse (included).

1. Quick Function Keys
2. Navigation/Menu
3. Playback controls
4. Channel Buttons



Using the Virtual Keyboard

- 5 When configuring certain options, such as Camera Title, the Virtual Keyboard opens to make mouse input easier.



Congratulations! You have completed STEP 1 & 2 successfully. Your DVR is now ready to use. Refer to the owner's manual to learn how to record, playback, use the search features and all other features available with this DVR.

SET-UP LOCAL VIEWING ON YOUR PC

LOCAL VIEWING INSTALLATION GUIDE

Time: 30 Minutes | Hardware PC/Router | Skills - Intermediate

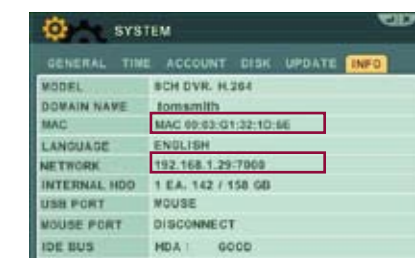
STEP 3



This step relates to remote viewing over the LAN (local area network) by using a PC located on the same network as that of the DVR.

Retrieve the DVR Information

- 1 To find the IP and MAC addresses, press the **« (REWIND)** button on the remote control or
 1. Open the **MAIN MENU** and select **SYSTEM**.
 2. Under the **INFO** tab, you will find your system's IP address.



Record the IP and MAC Addresses in the section below:

IP ADDRESS : _____

MAC ADDRESS : _____

(Required for DDNS registration)

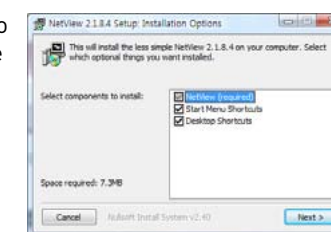
Install Software (on your local computer):

- 2 Insert the software CD into your computer's CD/DVD-R drive. At the prompt, run or double-click **NetViewInstaller.exe**

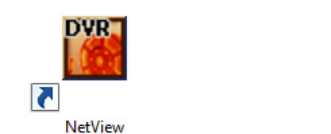


DVR NetView Software (on your local computer):

- 3 Follow the installation screens to complete **DVR NetView** Software installation.



- 4 Once the installation finishes, click **Close**. A shortcut icon appears on your desktop.



SET-UP LOCAL VIEWING ON YOUR PC

LOCAL VIEWING INSTALLATION GUIDE

STEP 3

Time: 30 Minutes

Hardware

PC/Router Skills - Intermediate

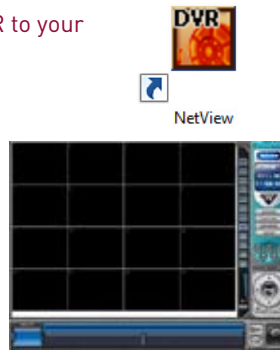
CONTINUED

Run DVR NetView Software (on your local computer):

NOTE: Make sure you have connected the DVR to your network and have DHCP turned ON.

1. Double-click the DVR NetView icon on the desktop. The DVR NetView main screen opens.

NOTE: By default, DVR NetView opens to a black multi-screen display. You must add a DVR to DVR NetView before images will be visible on the main screen.



Local Live Viewing using DVR NetView Software (on your local computer):

- 6 To add a DVR:
 1. From the main screen, click **SET LIST MANAGER** window opens.
 2. Click **AUTO SCAN**. Any DVRs connected to the local network will appear in the list frame.
 3. If your DVR does not appear after Auto Scan, you can add it manually to the list (**this step is applicable only if the DHCP is turned OFF**):
 - **SET NAME:** enter a title for the DVR (e.g. DVR1)
 - **IP/DDNS:** enter the IP address of the DVR (recorded in Step 3-1) (e.g. http://192.168.1.16)
 - **PORT:** 7000 (default)
 - **PASSWORD:** Enter the system password (**by default, 000000**)
 - Click **ADD TO LIST** to save the DVR



4. Click **PROPERTY** to view the properties of your DVR.
5. Click **OK** to save your settings or click **CANCEL** to exit without saving.

You will automatically log in to the DVR when you launch DVR NetView.



LOCAL LIVE SITE

Congratulations! You have completed Step 3 successfully. You can now view, playback video on your Local Computer via LAN (local area network).

SET-UP INTERNET REMOTE SECURITY MONITORING

REMOTE VIEWING INSTALLATION GUIDE

STEP 4

Time: 60 Minutes

Hardware

PC/Router Skills - Advanced

CONTINUED

Port Forward your Router:

- 1 Port forward your router first before proceeding with the set-up. You must forward Port: 7000

All routers are different. To port forward your router, please refer to your router's user manual.

An example of a port forwarding screen is shown for illustration purposes.

| Application | Start | End | Protocol | IP Address | Enable |
|-------------|-------|---------|----------|--------------|-------------------------------------|
| System | 7000 | to 7000 | Both | 192.168.1.12 | <input checked="" type="checkbox"/> |
| System | 80 | to 80 | Both | 192.168.1.12 | <input checked="" type="checkbox"/> |

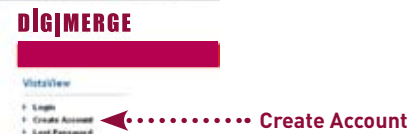
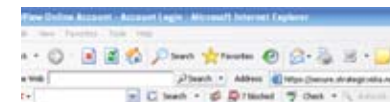
DDNS (Dynamic Domain Name System) Set-up:

- 2 Open your web browser (Internet Explorer by default) and enter <http://ddns.digimerge.net> in the address bar.



Create Account:

- 3 Open your web browser (Internet Explorer by default) and enter <http://ddns.digimerge.net> in the address bar.



Complete New Account Information:



1. FOR PRODUCT LICENSE select the **DH200 Series** option from the drop down menu.
2. FOR PRODUCT CODE enter the Monitor's MAC address (recorded in step 3, section 1).
3. FOR URL REQUEST enter a unique URL name (e.g. tomsmith). Note: URL name should not be more than 15 characters.

SET-UP INTERNET REMOTE SECURITY MONITORING

REMOTE VIEWING INSTALLATION GUIDE

STEP 4

Time: 60 Minutes

Hardware

PC/Router Skills - Advanced

CONTINUED

5 Registration Email:

An automated **REGISTRATION CONFIRMATION EMAIL** will be sent to your email. Print and Save this confirmation. You will need this information to access your System remotely.

Service Provider: dns1.digimergeddns.net
Domain Name: tomsmith.digimerge.net
User ID: tomsmith
Password: (your password)

6 Enter DDNS Set-up on your DVR:



ATTENTION: You MUST enter your DDNS information **LOCALLY** before attempting remote access.

1. Open the **MAIN MENU** and click **NETWORK**.
2. Select the **DDNS** tab.
3. Under **USE**, select **DIGIMERGE**.
4. Under **DOMAIN NAME**, enter only the **first portion of your DDNS** domain from the confirmation email. For example, if your domain name is "tomsmith@digimerge.ddns.net", you only need to enter "tomsmith" in the text field.
5. Under **USER ID**, enter your **Digimerge DDNS user name**.
6. Under **PASSWORD**, enter your **Digimerge DDNS password**.

NOTE: Obtain your Digimerge DDNS user name and password from the confirmation email.

7. Under **DDNS TEST**, select **START**. You should receive a "**SUCCESS**" message. If there is an error, check your network connections; check that you have entered the correct domain name, user ID, and password.
8. Press **ENTER** to save your settings. Press **MENU/ESC** to close remaining windows.

Install Software (on your remote computer):

- 7 Insert the software CD into your computer's CD/DVD-R drive. At the prompt, run or double-click **NetViewInstaller.exe**



Computer - not included

SET-UP INTERNET REMOTE SECURITY MONITORING

REMOTE VIEWING INSTALLATION GUIDE

STEP 4

Time: 60 Minutes

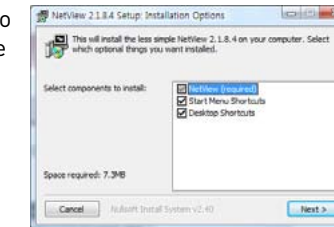
Hardware

PC/Router Skills - Advanced

CONTINUED

DVR NetView Software (on your remote computer):

- 8 Follow the installation screens to complete **DVR NetView Software** installation.



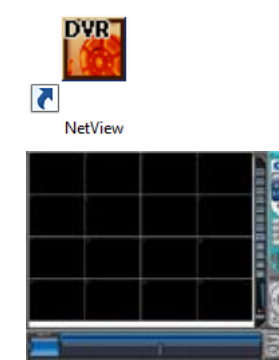
- 9 Once the installation finishes, click **Close**. A shortcut icon appears on your desktop.



Run DVR NetView Software (on your remote computer):

- 10 1. Double-click the DVR NetView icon on the desktop. The DVR NetView main screen opens.

NOTE: By default, DVR NetView opens to a black multi-screen display. You must add a DVR to DVR NetView before images will be visible on the main screen.



Using the Listen-in Audio



Connect Audio Capable Cameras (not included)

1. Connect the audio cable (RCA) from an audio capable camera (not included) to the **AUDIO IN** port on the rear panel of the system.
2. Open the **MAIN MENU** and select **RECORD**.
3. Under channel 1, select **AUDIO**.
4. Select **ON**.
5. Press the **ENTER** button to save your settings.

NOTE: The number of audio input varies by model.

SET-UP INTERNET REMOTE SECURITY MONITORING

REMOTE VIEWING INSTALLATION GUIDE

STEP 4

Time: 60 Minutes

Hardware

PC/Router Skills - Advanced

CONTINUED

Remote Live Viewing using DVR NetView Software (on your remote computer):

- 11 To add a DVR:

1. From the main screen, click **SET LIST MANAGER** window opens.
2. In the corresponding text fields enter the information :
 - **SET NAME:** enter a title for the DVR (e.g. DVR1)
 - **IP/DDNS:** enter the **DDNS DOMAIN NAME** from the Registration Email sent to you. (e.g. tomsmith.digimerge.net)
 - **PORT:** 7000 (by default)
 - **PASSWORD:** Enter the system password (**by default, 000000**)
4. Click **PROPERTY** to view the properties of your DVR.
5. Click **OK** to save your settings or click **CANCEL** to exit without saving.

You will automatically log in to the **DVR Remote View** when you launch DVR NetView.

Once you have added and connected to a DVR, you can monitor and control the system in real time.



REMOTE LIVE SITE

Along with the DVR NetView remote client software, you can also view your system remotely using Internet Explorer (version 7 or later recommended). Remote viewing through Internet Explorer allows for viewing from up to three simultaneous connections. Please refer to the user manual - Appenix M for more information.

NOTE: Remote viewing is only compatible with Internet Explorer. Mozilla Firefox, Opera, Safari and other browsers are not supported.

Congratulations! You have completed 4 successfully. You can now view, playback images on your Local Computer via LAN (local area network) and Remotely control the system on your Remote computer over the Internet (Wide Area Network).

Free Manuals Download Website

<http://myh66.com>

<http://usermanuals.us>

<http://www.somanuals.com>

<http://www.4manuals.cc>

<http://www.manual-lib.com>

<http://www.404manual.com>

<http://www.luxmanual.com>

<http://aubethermostatmanual.com>

Golf course search by state

<http://golfingnear.com>

Email search by domain

<http://emailbydomain.com>

Auto manuals search

<http://auto.somanuals.com>

TV manuals search

<http://tv.somanuals.com>