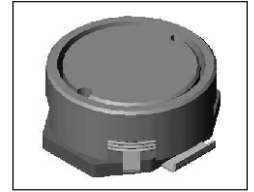


SMT Power Inductor

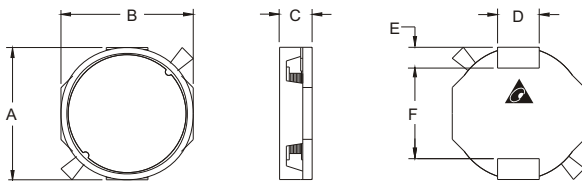
SIWC1335 Type

Features

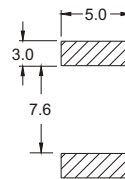
- RoHS compliant.
- Low profile (3.8mm max. height) SMD type.
- Magnetically shielded, suitable for high density mounting
- High energy storage and low DCR.
- Provided with embossed carrier tape packing.
- Ideal for power source circuits, DC-DC converter, DC-AC inverters inductor application.
- In addition to the standard versions shown here, customized inductors are available to meet your exact requirements.



Mechanical Dimension:



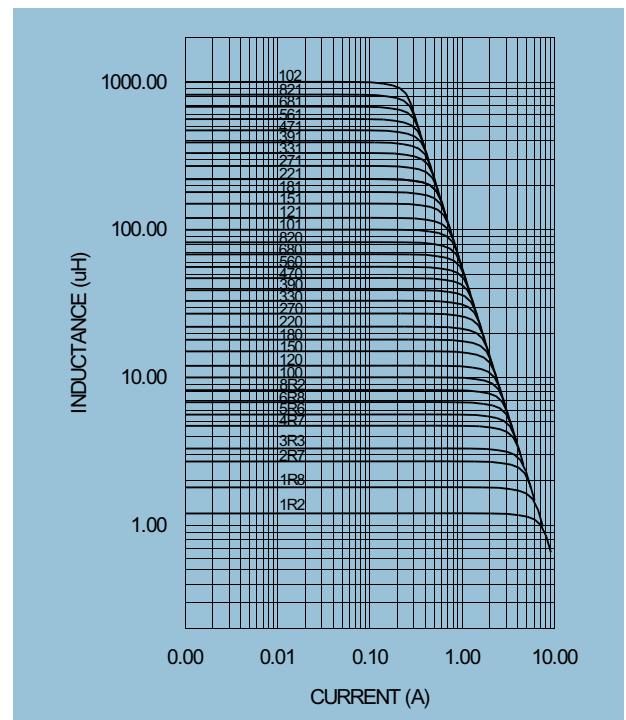
RECOMMENDED PAD PATTERNS



UNIT:mm/inch
 A = 13.0 / 0.512 Max.
 B = 13.0 / 0.512 Max.
 C = 3.5±0.3 / 0.138±0.012
 D = 4.0 / 0.157
 E = 2.0 / 0.079
 F = 8.6±0.1 / 0.339±0.004

Electrical Characteristics: 25°C: 1KHz, 1V

PART NO.	L ¹ (uH)	DCR (Ω)MAX	I _{rated} ² (A dc)
SIWC1335-1R2	1.2	0.013	5.10
SIWC1335-1R8	1.8	0.014	4.30
SIWC1335-2R7	2.7	0.015	3.80
SIWC1335-3R3	3.3	0.017	3.40
SIWC1335-4R7	4.7	0.022	2.80
SIWC1335-5R6	5.6	0.026	2.70
SIWC1335-6R8	6.8	0.029	2.30
SIWC1335-8R2	8.2	0.033	2.00
SIWC1335-100	10.0	0.039	1.70
SIWC1335-120	12.0	0.042	1.50
SIWC1335-150	15.0	0.052	1.40
SIWC1335-180	18.0	0.054	1.30
SIWC1335-220	22.0	0.071	1.20
SIWC1335-270	27.0	0.088	1.10
SIWC1335-330	33.0	0.105	1.00
SIWC1335-390	39.0	0.114	0.96
SIWC1335-470	47.0	0.134	0.80
SIWC1335-560	56.0	0.154	0.75
SIWC1335-680	68.0	0.179	0.71
SIWC1335-820	82.0	0.220	0.62
SIWC1335-101	100.0	0.260	0.55
SIWC1335-121	120.0	0.317	0.53
SIWC1335-151	150.0	0.374	0.48
SIWC1335-181	180.0	0.480	0.41
SIWC1335-221	220.0	0.578	0.39
SIWC1335-271	270.0	0.689	0.35
SIWC1335-331	330.0	0.820	0.32
SIWC1335-391	390.0	1.004	0.30
SIWC1335-471	470.0	1.220	0.27
SIWC1335-561	560.0	1.479	0.23
SIWC1335-681	680.0	1.680	0.20
SIWC1335-821	820.0	2.124	0.21
SIWC1335-102	1000.0	2.640	0.18



1. Tolerance of inductance : ± 20%.
2. I_{rated} is the DC current which cause the inductance drop less than 20% of its nominal inductance without current and the surface temperature of the part increase less than 45°C.
3. Operating temperature: -20°C to 105°C (including self-temperature rise).



DELTA ELECTRONICS, INC.

(TAOYUAN PLANT CPBG) 252, SAN YING ROAD, KUEISAN INDUSTRIAL ZONE, TAOYUAN SHIEN, 333, TAIWAN, R.O.C.

TEL: 886-3-3591968; FAX: 886-3-3591991

http://www.deltawww.com

Free Manuals Download Website

<http://myh66.com>

<http://usermanuals.us>

<http://www.somanuals.com>

<http://www.4manuals.cc>

<http://www.manual-lib.com>

<http://www.404manual.com>

<http://www.luxmanual.com>

<http://aubethermostatmanual.com>

Golf course search by state

<http://golfingnear.com>

Email search by domain

<http://emailbydomain.com>

Auto manuals search

<http://auto.somanuals.com>

TV manuals search

<http://tv.somanuals.com>