

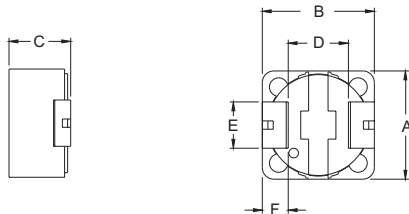
SMT Power Inductor

SIQ125R Type

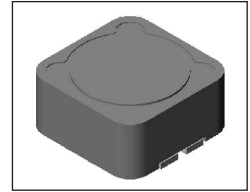
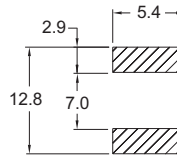
Features

- RoHS compliant.
- Magnetically shielded.
- Ideal for power source circuits, DC-DC converter, DC-AC inverters inductor applications.
- In addition to the standard versions shown here, customized inductors are available to meet your exact requirements.

Mechanical Dimension :



RECOMMENDED PAD PATTERNS



UNIT:mm/inch

A = 12.2 ± 0.3 / 0.480 ± 0.012

B = 12.2 ± 0.3 / 0.480 ± 0.012

C = 6.0 / 0.236 Max.

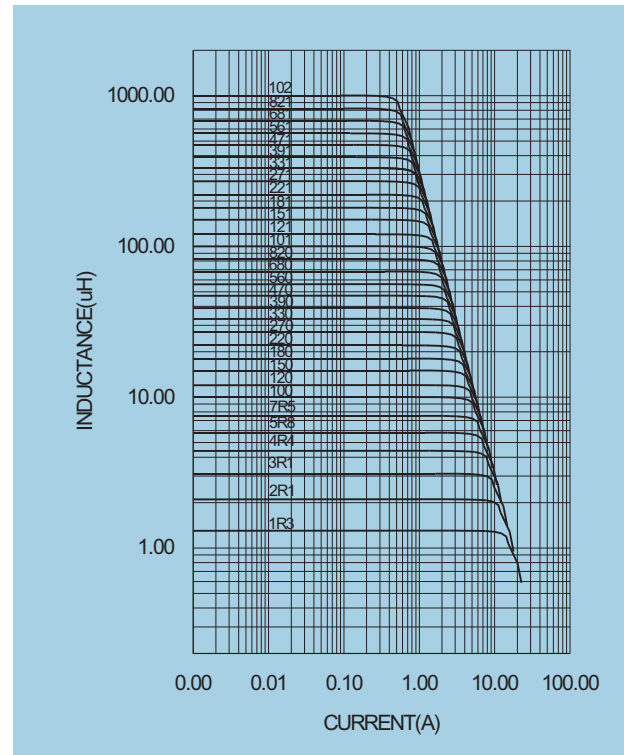
D = 7.6 ± 0.3 / 0.299 ± 0.012

E = 5.0 / 0.197

F = 2.2 / 0.087

Electrical Characteristics : 25°C, 100KHz, 0.1V for 0.8uH-8.2uH and all of SIQ125RA.
1KHz, 1V for 10~1000uH.

PART NO.	L ¹ (uH)	DCR (mΩ) MAX	I _{rated} ² (A dc)
SIQ125RA - R82	0.82	3.2	16.80
SIQ125R - 1R3	1.30	12.0	8.00
SIQ125RA - 1R3	1.30	4.0	15.00
SIQ125R - 2R1	2.10	1.4	7.00
SIQ125RA - 2R1	2.10	5.3	8.00
SIQ125RA - 2R8	2.80	8.1	7.00
SIQ125R - 3R1	3.10	17.0	6.00
SIQ125RA - 4R0	4.00	10.0	6.00
SIQ125R - 4R4	4.40	20.0	5.00
SIQ125RA - 4R7	4.70	15.0	8.00
SIQ125R - 5R8	5.80	21.0	4.40
SIQ125RA - 5R8	5.80	21.0	7.00
SIQ125R - 7R5	7.50	24.0	4.20
SIQ125RA - 8R2	8.20	23.0	6.00
SIQ125R - 100	10.00	25.0	4.00
SIQ125RA - 100	10.00	25.0	5.00
SIQ125R - 120	12.00	27.0	3.50
SIQ125R - 150	15.00	30.0	3.30
SIQ125RA - 150	15.00	33.0	4.20
SIQ125R - 180	18.00	34.0	3.00
SIQ125RA - 180	18.00	45.0	4.20
SIQ125R - 220	22.00	40.0	2.80
SIQ125RA - 220	22.00	47.0	3.80
SIQ125R - 270	27.00	51.0	2.30
SIQ125R - 330	33.00	57.0	2.10
SIQ125RA - 330	33.00	57.0	3.00
SIQ125R - 390	39.00	68.0	2.00
SIQ125R - 470	47.00	75.0	1.80
SIQ125R - 560	56.00	110.0	1.70
SIQ125R - 680	68.00	120.0	1.50
SIQ125RA - 680	68.00	140.0	2.10
SIQ125R - 820	82.00	140.0	1.40
SIQ125R - 101	100.00	160.0	1.30
SIQ125R - 121	120.00	170.0	1.10
SIQ125R - 151	150.00	230.0	1.00
SIQ125R - 181	180.00	290.0	0.90
SIQ125R - 221	220.00	400.0	0.80
SIQ125R - 271	270.00	460.0	0.75
SIQ125R - 331	330.00	510.0	0.68
SIQ125R - 391	390.00	690.0	0.65
SIQ125R - 471	470.00	770.0	0.58
SIQ125R - 561	560.00	860.0	0.54
SIQ125R - 681	680.00	1200.0	0.48
SIQ125R - 821	820.00	1340.0	0.43
SIQ125R - 102	1000.00	1530.0	0.40



1. Tolerance of inductance : +30%/-20% for 0.82~8.25uH, ±20% for 10~1000uH.
2. I_{rated} is the DC current which cause the inductance drop less than 25% of its nominal inductance without current and the surface temperature of the part increase less than 45°C.
3. Operating temperature: -20°C to 105°C (including self-temperature rise).



DELTA ELECTRONICS, INC.

(TAOYUAN PLANT CPBG) 252, SAN YING ROAD, KUEISAN INDUSTRIAL ZONE, TAOYUAN SHIEN, 333, TAIWAN, R.O.C.

TEL: 886-3-3591968; FAX: 886-3-3591991

<http://www.deltawww.com>

Free Manuals Download Website

<http://myh66.com>

<http://usermanuals.us>

<http://www.somanuals.com>

<http://www.4manuals.cc>

<http://www.manual-lib.com>

<http://www.404manual.com>

<http://www.luxmanual.com>

<http://aubethermostatmanual.com>

Golf course search by state

<http://golfingnear.com>

Email search by domain

<http://emailbydomain.com>

Auto manuals search

<http://auto.somanuals.com>

TV manuals search

<http://tv.somanuals.com>