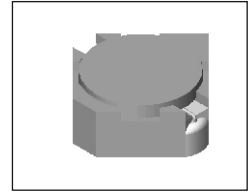


# SMT Power Inductor

## SILM315L Type

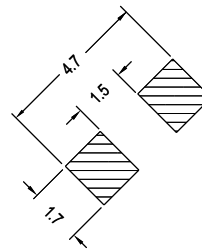
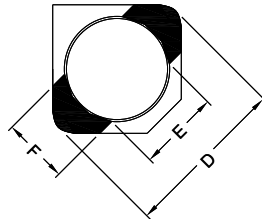
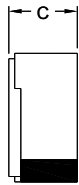
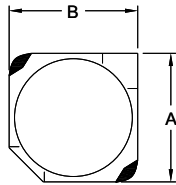
### Features

- RoHS compliant.
- Low profile (1.5mm max. height) SMD type.
- Magnetically shielded, suitable for high density mounting.
- Self-leads, suitable for high density mounting.
- High energy storage and low DCR.
- Provided with embossed carrier tape packing.
- Ideal for power source circuits, DC-DC converter, DC-AC inverters inductor applications.
- In addition to the standard versions shown here, customized inductors are available to meet your exact requirements.



### Mechanical Dimension:

#### RECOMMENDED PAD PATTERNS



UNIT:mm/inch  
 A = 3.2 / 0.126 Max.  
 B = 3.2 / 0.126 Max.  
 C = 1.5 / 0.059 Max.  
 D = 4.0 / 0.157 Max.  
 E = 2.2 / 0.087  
 F = 1.0 / 0.039

### Electrical Characteristics: 25°C: 100KHz, 0.1V

PART NO.	L <sup>1</sup> (uH)	DCR (mΩ) MAX	Isat <sup>2</sup> (Adc)	Ir <sup>3</sup> (Adc)
SILM315L - 2R2	2.2	108	0.90	1.00
SILM315L - 3R3	3.3	168	0.70	0.90
SILM315L - 4R7	4.7	240	0.60	0.85
SILM315L - 5R6	5.6	264	0.55	0.80
SILM315L - 6R8	6.8	288	0.52	0.77
SILM315L - 8R2	8.2	420	0.48	0.72
SILM315L - 100	10.0	480	0.45	0.70
SILM315L - 120	12.0	540	0.40	0.65
SILM315L - 150	15.0	720	0.35	0.50
SILM315L - 180	18.0	816	0.30	0.40
SILM315L - 220	22.0	960	0.25	0.30

1. Tolerance of inductance: ±30% for 2.2~8.2uH; ±20% for 10~22uH.
2. Isat is the DC current which cause the inductance drop 35% typical of its nominal inductance without current.
3. Ir is the DC current which cause the surface temperature of the part increase less than 45°C.
4. Operating temperature : -20°C to 105°C (including self-temperature rise).



DELTA ELECTRONICS, INC.

(TAOYUAN PLANT CPBG) 252, SAN YING ROAD, KUEISAN INDUSTRIAL ZONE, TAOYUAN SHIEN, 333, TAIWAN, R.O.C.

TEL: 886-3-3591968; FAX: 886-3-3591991

<http://www.deltawww.com>

## Free Manuals Download Website

<http://myh66.com>

<http://usermanuals.us>

<http://www.somanuals.com>

<http://www.4manuals.cc>

<http://www.manual-lib.com>

<http://www.404manual.com>

<http://www.luxmanual.com>

<http://aubethermostatmanual.com>

Golf course search by state

<http://golfingnear.com>

Email search by domain

<http://emailbydomain.com>

Auto manuals search

<http://auto.somanuals.com>

TV manuals search

<http://tv.somanuals.com>