

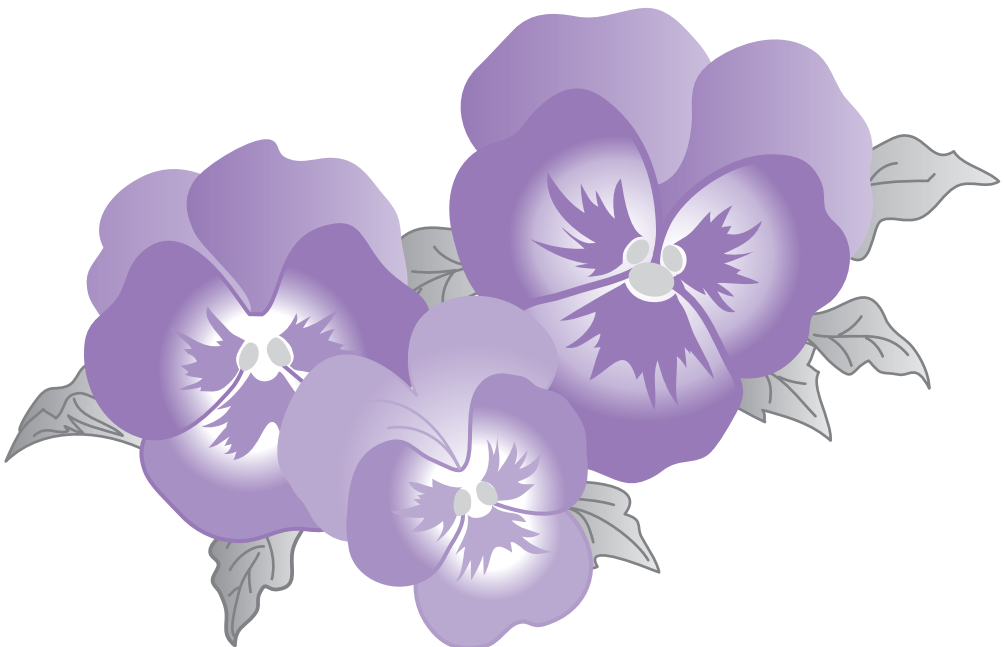
brother®



PE-DESIGN 7

Personal Embroidery Design Software System *Ver.*

Quick Reference Guide



IMPORTANT INFORMATION: REGULATIONS

Federal Communications Commissions (FCC) Declaration of Conformity (For USA Only)

Responsible Party: Brother International Corporation
100 Somerset Corporate Boulevard
Bridgewater, NJ 08807-0911 USA

declares that the product

Product Name: Brother USB Writer
Model Number: PE-DESIGN

complies with Part 15 of the FCC Rules. Operation is subject to the following two conditions: (1) this device may not cause harmful interference, and (2) this device must accept any interference received, including interference that may cause undesired operation.

This equipment has been tested and found to comply with the limits for Class B digital device, pursuant to Part 15 of the FCC Rules. These limits are designed to provide reasonable protection against harmful interference in a residential installation. This equipment generates, uses, and can radiate radio frequency energy and, if not installed and used in accordance with the instructions, may cause harmful interference to radio communications. However, there is no guarantee that interference will not occur in a particular installation. If this equipment does cause harmful interference to radio or television reception, which can be determined by turning the equipment off and on, the user is encouraged to try to correct the interference by one or more of the following measures:

- Reorient or relocate the receiving antenna.
- Increase the separation between the equipment and receiver.
- Consult the dealer or an experienced radio/TV technician for help.
- Changes or modifications not expressly approved by the manufacturer or local sales distributor could void the user's authority to operate the equipment.

Canadian Department of Communications Compliance Statement (For Canada Only)

This digital apparatus does not exceed the Class B limits for radio noise emission from a digital apparatus as set out in the interference-causing equipment standard entitled "Digital Apparatus", ICES-003 of the Department of Communications.

Radio Interference (Other than USA and Canada)

This machine complies with EN55022 (CISPR Publication 22) /Class B.

Congratulations on choosing our product!

Thank you very much for purchasing our product. To obtain the best performance from this unit and to ensure safe and correct operation, please read this Quick Reference Guide carefully, and then keep it in a safe place together with your warranty.

Please read before using this product

For designing beautiful embroidery patterns

- This system allows you to create a wide variety of embroidery patterns and supports a wider range of sewing attribute settings (thread density, sewing pitch, etc.). However, the final result will depend on your particular sewing machine model. We recommend that you make a trial sewing sample with your sewing data before sewing on the final material.

For safe operation

- Avoid dropping a needle, a piece of wire or other metallic objects into the unit or into the card slot.
- Do not store anything on the unit.

For a longer service life

- When storing the unit, avoid direct sunlight and high humidity locations. Do not store the unit close to a heater, iron or other hot objects.
- Do not spill water or other liquids on the unit or cards.
- Do not drop or hit the unit.

For repairs or adjustments

- In the event that a malfunction occurs or adjustment is required, please consult your nearest service center.

Notice

Neither this Quick Reference Guide nor the Instruction Manual explains how to use your computer under Windows®. Please refer to the Windows® manuals.

Copyright acknowledgment

Windows® is a registered trademark of Microsoft Corporation. Other product names mentioned in the Instruction Manual and Quick Reference Guide may be trademarks of registered trademarks of their respective companies and are hereby acknowledged.

Important

Using this unit for unauthorized copying of material from embroidery cards, newspapers and magazines for commercial purpose is an infringement of copyrights which is punishable by law.

Caution

The software included with this product is protected by copyright laws. This software can be used or copied only in accordance with the copyright laws.

SAVE THESE INSTRUCTIONS
This product is intended for household use.

For additional product information and updates, visit our web site at:
<http://www.brother.com/> or <http://solutions.brother.com/>

Table of Contents

Quick Reference Guide

Before Use.....	4
Features	4
Basic Operation Map	9
Introduction.....	10
Installation (Please read before Installing!)	12
Using this Quick Reference Guide	23
Using the Instruction Manual	23
Sew Types	28

Getting Started.....	30
Starting Up/Exiting Applications	30
Understanding Windows and Using Tools.....	31
Automatically Converting an Image to an Embroidery Design (Auto Punch Function).....	36

Troubleshooting	46
------------------------------	-----------

Instruction Manual (viewed from computer)

After the software has been installed, the Instruction Manual can be viewed from the software application window. The Instruction Manual provides operating procedures and descriptions for the various functions of the software. Click on **Help** in the tool bar and then click on **Instruction Manual**.

Basic Operation

Starting up/Exiting Applications

Understanding Windows and Using Tools

Automatically Converting an Image to an Embroidery Design
(Auto Punch Function)

Automatically Converting an Image to an Embroidery Design
(Cross Stitch Function)

Automatically Converting a Photo to an Embroidery Design

Manually Creating Embroidery Patterns From Images

Arranging Embroidery Patterns

Managing Embroidery designs

Entering Monograms

Creating Appliqués

Advanced Operation

Automatically Converting an Image to an Embroidery Design
(Layout & Editing/Image to Stitch Wizard)

Arranging Embroidery Designs (Layout & Editing)

Manually Creating Embroidery Patterns From Images (Design Center)

Creating Custom Fonts (Font Creator)

Creating Custom Stitch Patterns (Programmable Stitch Creator)

Listing/Managing Embroidery Design Files (Design Database)

Menus/Tools

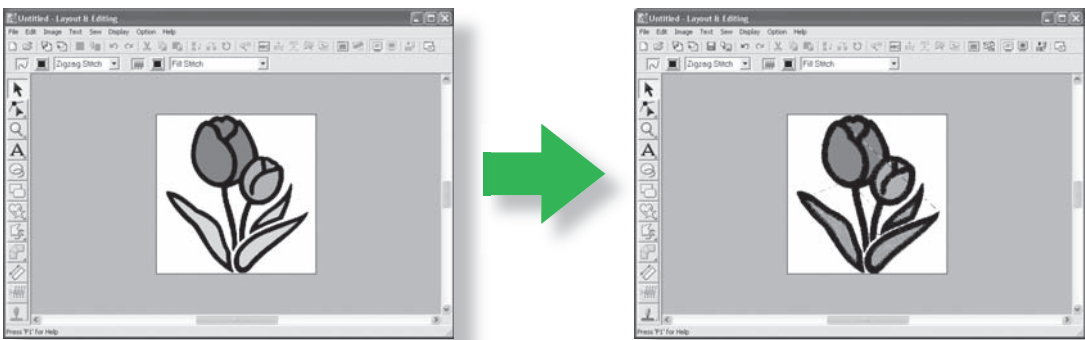
Index

Features

What You Can Do With This Software

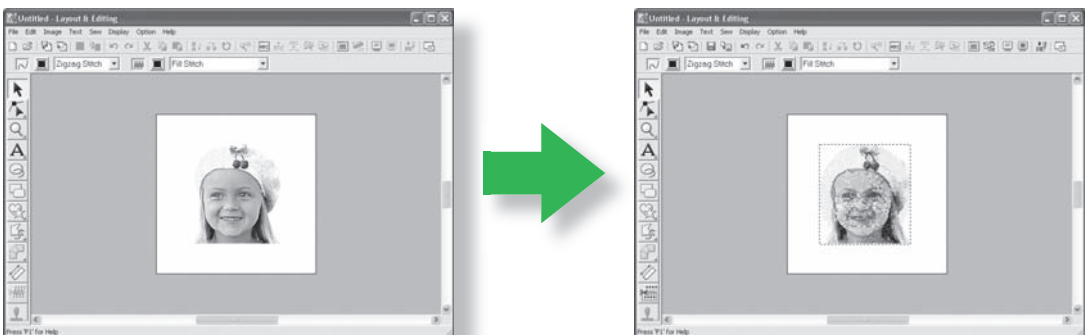
This software provides digitizing and editing capabilities, allowing you the creative freedom to design original embroidery. Easily turn illustrations, photos and lettering into custom embroidery designs.

Automatically Create an Embroidery Pattern From an Image



Refer to “Automatically Converting an Image to an Embroidery Design (Auto Punch Function)” in the Instruction Manual.

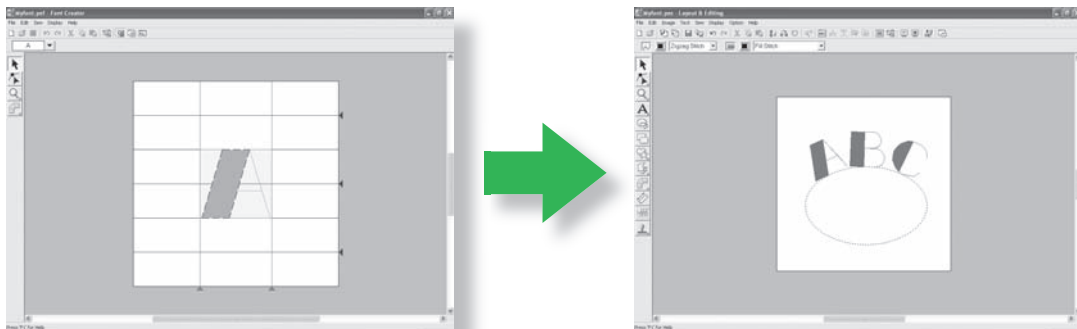
Automatically Create an Embroidery Pattern From a Photo



Refer to “Automatically Converting a Photo to an Embroidery Design (Photo Stitch Function)” in the Instruction Manual.

Easily Create Custom Fonts

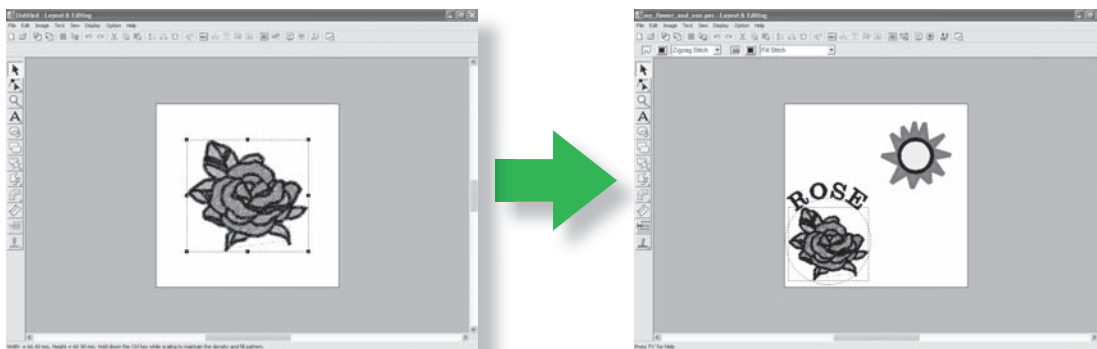
Custom fonts can be created using Font Creator. These fonts can be recalled to be used in Layout & Editing.



Refer to “Manually Creating Custom Fonts (Font Creator)” in the Instruction Manual.

Have Fun Creating Embroidery Patterns Manually

You can combine embroidery patterns or apply stitching to drawings and text. In addition, you can design a wider variety of embroidery patterns by using the many sew types available.



“Arranging Embroidery Patterns (Layout & Editing)” in the Instruction Manual.

New Features of Version 7

■ Stitch generation features

- Added Line Sewing Type: Triple Stitch
- Added Region Sewing Type: Random Walking Stitch (stippling-style stitch)
- Variations of under sewing
 - Added new under sewing type to the Region Sewing Attributes
 - Under sewing can be set for zigzag stitching, manual punching, and text
- Motif stitch can be set to manual punching
- Piping Stitch can be set to regions
- New zigzag stitch corners have been added to the Line Sewing Attributes
 - (2 styles of Sharp Corners)
- Expanded motif sizing and spacing
 - The motif can be spaced vertically and horizontally
 - The motif can be sized up to 100 x 100 mm (3.94 x 3.94 inches)

■ Editing Functions and user interface

- Auto repeat using arrow keys
- Can save Personal Sewing Attribute settings

Layout & Editing:

- Newly created custom Fonts can be used in Layout & Editing. (From Font Creator)
- New small Fonts (Minimum Font size 3.0mm (0.12 inch))
- Embroidery letters of 2-byte characters for True Type Font can be entered. (Japanese, Chinese, Korean, etc.)
- Monogramming function includes more decorative frames. All built in fonts, True Type Font, and custom created fonts from Font Creator can now be used with the Monogram function
- Transforming text can be done by dragging. Kerning, Sizing, Rotating, vertical offset can be done by dragging the individual letters
- Can generate a curved outline in the Auto Punch function
- Improved editing functions for curved outlines
- Shape tool has been added to the left tool bar with 24 built in shapes
- Six additional stitch formats can be imported and exported: All formats include: .pec, .pes, .dst, .exp, .pcs, .hus, .vip, .shv, .jef, .sew, .csd, .xxx and .phc (.pec and .phc are import only.)
- Additional fading levels in Image display
- Enables the ability to drag & drop clip art, pes files, and stitch format files into Layout & Editing

- Improved Photo Stitch function:
 - Easier process to create an embroidery file from a Photo
 - Improved processing speed and color selection

Design Center:

- “Detect Outlines” function to select the outline of an image in “Cut out to Line Image” dialog
- “Figure Handle Stage” has the ability to connect/split a line
- Enables the color of a portion of the outline to be changed in the Sewing Setting Stage
- New button to easily export a design from Sew Setting Stage to Layout & Editing
- Allows up to 20 Undo/Redo operations
- Enables to display template image on Figure Handle Stage and enable to display original image on Sew Setting Stage in the Reference Window

Design Data Base

- Can drag and drop a design from the Design Data Base into Layout & Editing
- Can write to an Original card from Design Data Base
- Property box when outputting CSV files and printing, enables to output the thread codes

■ **General**

- New Font Creator program to create custom fonts
- Automatically checks and updates the newest version
- Additional sample files for images and embroidery patterns

Applications of the Software

This package consists of five applications.

■ **Layout & Editing**

Layout & Editing is used to automatically create embroidery patterns from images, and to combine images and text to create embroidery patterns that can be written to an original card. The images may come from scanning a printed image or can be created with an application like Paint®.

After assembling the different parts of your embroidery pattern, you can use the layout functions to adjust their relative position, orientation and scale.

When an embroidery design is complete, you can save it and write it to an original card.

The original card can then be inserted into your embroidery machine for the embroidery design to be sewn.

■ Design Center

Design Center is used to manually create embroidery patterns from images using a four-stage procedure. The images may come from scanning a printed image or can be created with an application like Paint®. Design Center automatically detects outlines in the image and replaces them with broken lines that can be edited and assigned sewing attributes.

- **The four stages of Design Center**

Original Image Stage:

Open an image file and select one or more colors that the application will use to trace the outlines.

Line Image Stage:

The original color image is replaced with a black-and-white image (the colors selected in the Original Image Stage become black, and all other colors become white).

This image can be edited using pens of different thicknesses. (You can also start with this step to draw a black-and-white image by hand.)

When the image is ready, start the automatic tracing process.

Figure Handle Stage:

The black-and-white image is replaced with a set of outlines made of editable broken lines. You can edit the broken lines by moving, inserting or deleting editing points.

Sew Setting Stage:

In this final step, apply sewing attributes (thread color and sew type) to the outlines and the inside regions.

At any stage, you can save your work to retrieve it later.

Saving your work as you move through the stages will be helpful if you make changes, then later decide to use the original pattern.

When your image has reached the Sew Setting Stage, you can import it into Layout & Editing, where the image can be moved and scaled as a single pattern.

■ Programmable Stitch Creator

Programmable Stitch Creator allows you to create, edit and save fill/stamp and motif stitch patterns that can be applied as a programmable fill stitch or motif stitch, or as a stamp to the enclosed regions of embroidery patterns both in Design Center and Layout & Editing.

■ Font Creator

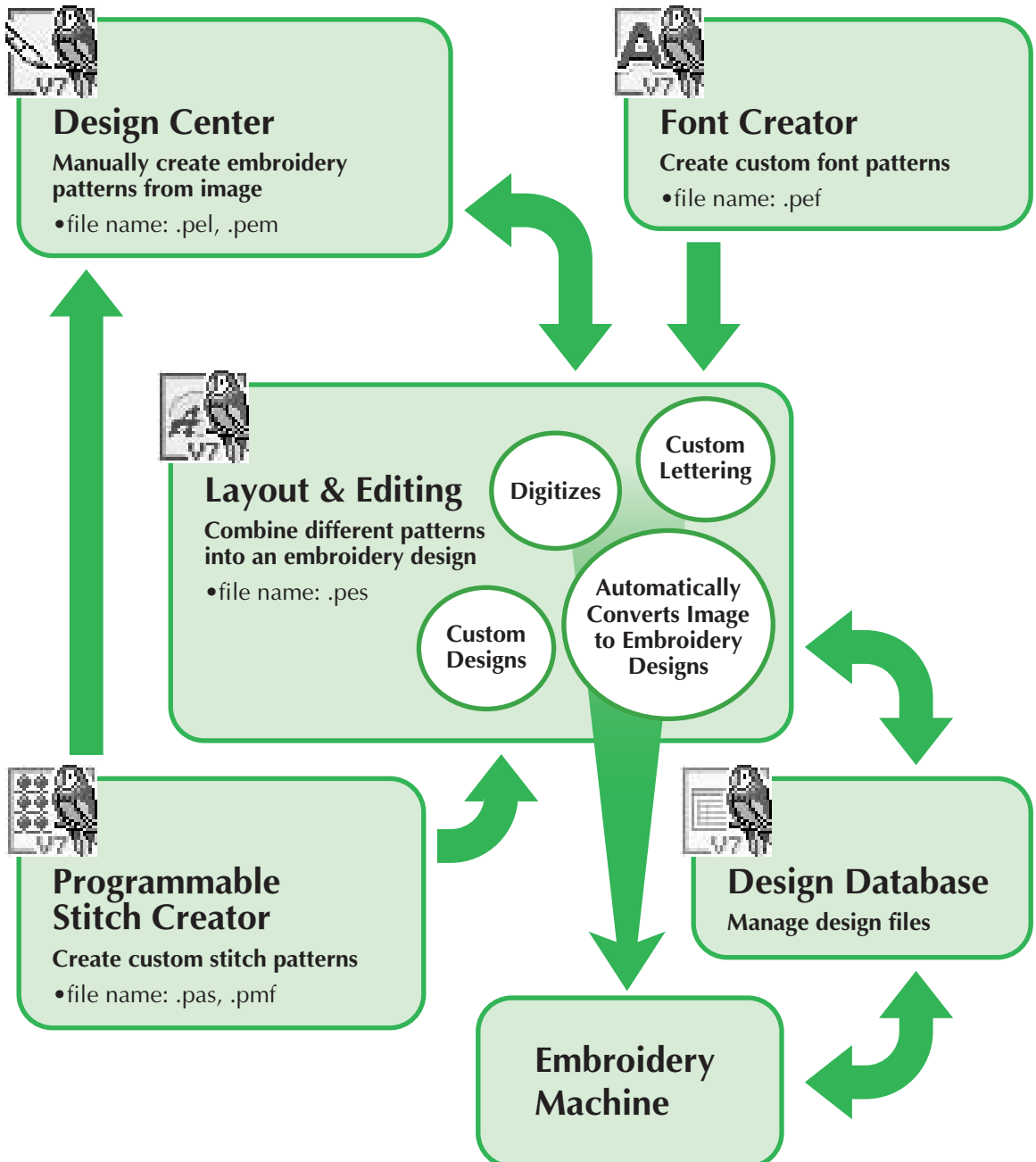
Font Creator allows you to create, edit and save custom font characters, which can be used in Layout & Editing.

■ Design Database

Design Database allows you to easily preview the embroidery design files on your computer so that you can find the desired design, which can be opened with or imported into Layout & Editing. From Design Database, you can also convert the files to other formats (.dst, .exp, .pcs, .hus, .vip, .shv, .jef, .sew, .csd, and .xxx), or print or output as an HTML file images of the embroidery designs in a selected folder. In addition, the sewing information for the embroidery designs in a selected folder can be outputted as a CSV file for use in other database applications.

In addition, the embroidery designs can be written to original cards.

Basic Operation Map



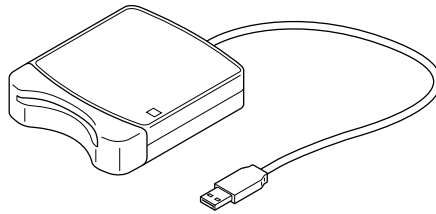
Introduction

Package Contents

Check that the following items are included. If anything is missing or damaged, contact your authorized dealer or Brother Customer Service.

Version 7 (full version):

USB card writer module



CD-ROM



Contains the software, Instruction Manual (HTML format) and Instruction Manual (PDF format).

Original card



Quick Reference Guide



Template



Version 7 upgrade for version 5 or 6:

CD-ROM



Contains the software, Instruction Manual (HTML format) and Instruction Manual (PDF format).

Quick Reference Guide



Template



Note:

- The USB card writer module and the original card are not included in the kit provided for upgrading from version 5 or 6.

Optional Supplies

Original card



Note:

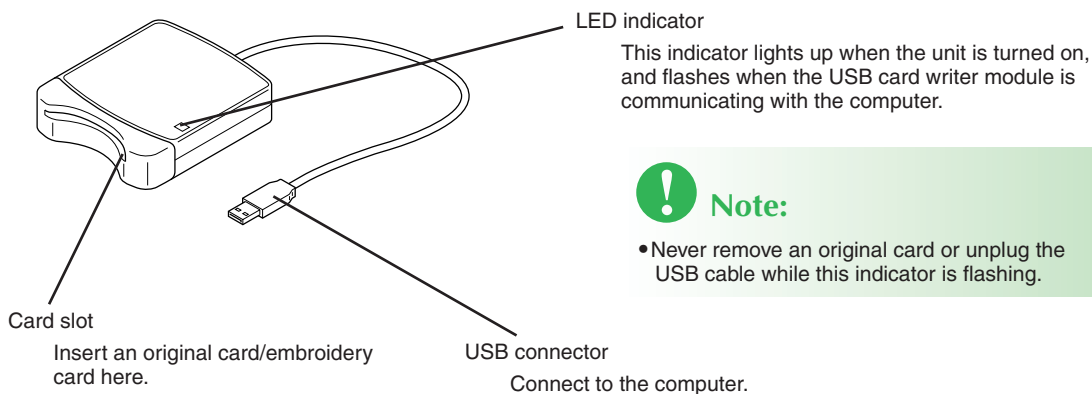
- The only original cards that can be used with this USB card writer module are those like the one enclosed or optional original cards of the same type.



Memo:

- Additional blank original cards can be purchased through an authorized dealer.

Principal Parts



Note:

- Never remove an original card or unplug the USB cable while this indicator is flashing.



Memo:

- Since power is supplied to the USB card writer through the USB connection to the computer, there is no power supply cable or power switch.
- Be sure to keep original cards away from high humidity, direct sunlight, static electricity and strong shocks. Furthermore, do not bend the cards.

Installation (Please read before Installing!)



Please Read Before Installation

- Before beginning the installation, check that the computer meets the system requirements.
- In order to install the software, you must log on to the computer using an account with administrator privileges. For details on logging on to the computer using an account with administrator privileges, refer to the Windows manual.
- The installation procedure is described for Windows® XP. The procedure and dialog boxes for other operating systems may be slightly different.
- If the installation is canceled before it is completed or if the procedure is not performed as described, the software will not be installed correctly.
- Do not remove the CD-ROM from the CD-ROM drive of the computer while the installation is being performed. Remove the CD-ROM after the installation is completed.
- Before turning on the computer, be sure to disconnect the USB card writer module.
- In order to upgrade the USB card writer module, you must be able to connect to the Internet. If you cannot connect to the Internet, contact your authorized dealer or Brother Customer Service.
- When upgrading from version 5.02 or later, skip STEP 2 and continue with STEP 3.
- If the USB card writer module is not upgraded, it can only be used the limited number of times that the software can be used. In order to upgrade the USB card writer module, be sure to perform STEP 3 on page 19.




Installation Procedure

The installation procedure is different depending on whether the full version or an upgrade of the software is being installed. Be sure to perform the installation procedures listed below.

■ Installing version 7.0 (full version)

- [STEP 1] Installing the software.....  page 13
- [STEP 2] Installing the driver for the card writer module.....  page 16

■ Upgrading from version 5.0 or 5.01

- [STEP 1] Installing the software.....  page 13
- [STEP 2] Installing the driver for the card writer module.....  page 16
- [STEP 3] Upgrading the USB card writer module.....  page 19

■ Upgrading from version 5.02 or later

- [STEP 1] Installing the software.....  page 13



Memo:

- When upgrading from version 5.02 or later, STEP 2 is not performed.

- [STEP 3] Upgrading the USB card writer module.....  page 19

System Requirements

Before installing the software on your computer, make sure that the computer meets the following minimum PC requirements.

Computer	IBM-PC or compatible computer
Operating system	Windows® 2000, XP
Processor	Pentium III 800 MHz or higher
Memory	128 MB (512 MB or more is recommended.)
Hard disk free space	200 MB
Monitor	SVGA (800 x 600), 16-bit color or higher
Port	1 available USB
Printer	A graphic printer that is supported by your system (if you wish to print your images)
CD-ROM drive	Required for installation



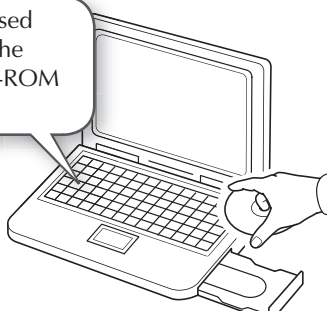
Note:

- Power is supplied to the USB card writer module through the USB connection. Connect the USB card writer module to a USB connector on the computer or to a self-powered USB hub that can supply enough power to the card writer module. If the card writer module is not connected in this way, it may not operate correctly.
- This product may not operate correctly with some computers and USB expansion cards.

Step 1: Installing the Software

This section describes how to install the application software.

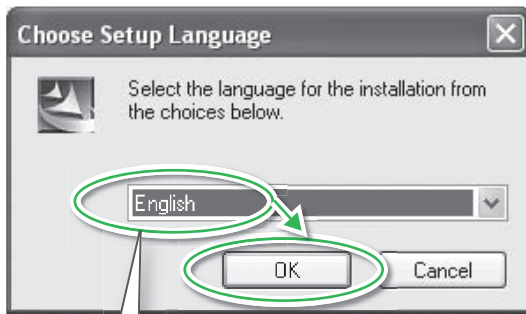
Insert the enclosed CD-ROM into the computer's CD-ROM drive.



Note:

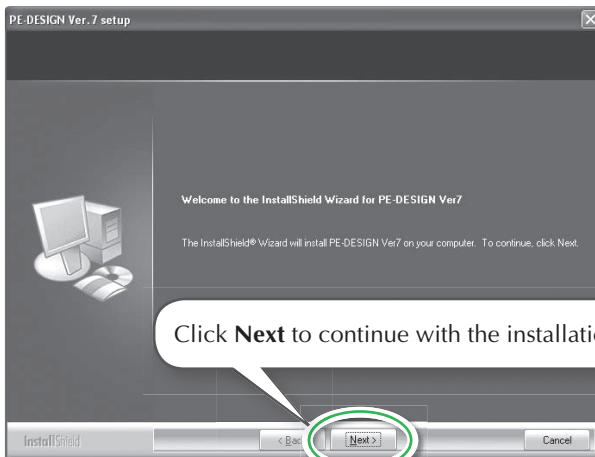
- If the installation is interrupted or not performed as described, the software will not be installed correctly.
- Before turning on the computer, be sure to **DISCONNECT** the USB card writer module.
- In order to install the software, you must log on to the computer using an account with administrator privileges.

→ After a short while, the **Choose Setup Language** dialog box automatically appears.



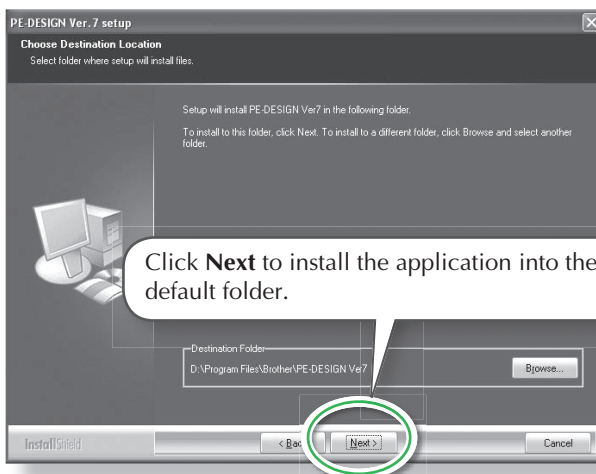
Select the **desired language**, and then click **OK**.

→ The InstallShield Wizard starts up, and the first dialog box appears.



Click **Next** to continue with the installation.

→ A dialog box appears, allowing you to select the folder where the software will be installed.



Click **Next** to install the application into the default folder.



Memo:

- The following installation procedure includes descriptions and dialog boxes for Windows® XP. The procedure and dialog boxes for other operating systems may be slightly different.



Memo:

- **If the installer does not automatically start up:**

1. Click the **Start** button.
→ The **Run** dialog box appears.
2. Click **Run**.
→ The **Run** dialog box appears.
3. Type in the full path to the installer, and then click **OK** to start up the installer.
For example: D:\setup.exe (where "D:" is the name of the CD-ROM drive)



Memo:

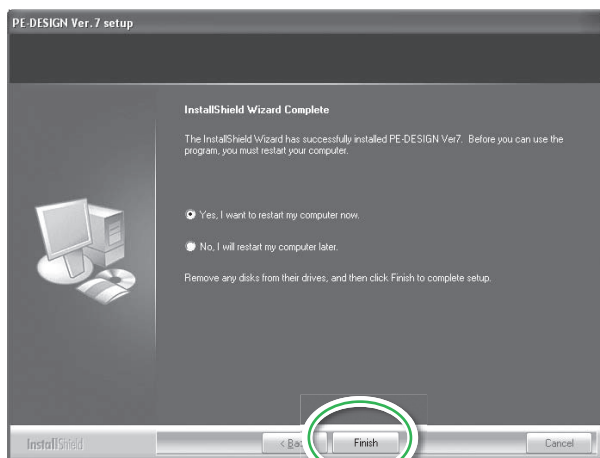
- **To install the application into a different folder:**

1. Click **Browse**.
2. In the **Choose Folder** dialog box that appeared, select the drive and folder. (If necessary, type in the name of a new folder.)
3. Click **OK**.
→ The **Choose Destination Location** dialog box of the InstallShield Wizard shows the selected folder.
4. Click **Next** to install the application into the selected folder.

- To return to the previous step, click **Back**.

- To quit the installation, click **Cancel**.

→ When the installation is completed, the following dialog box appears, suggesting that the computer be restarted.



Click **Finish** to restart the computer and complete the installation of the software.



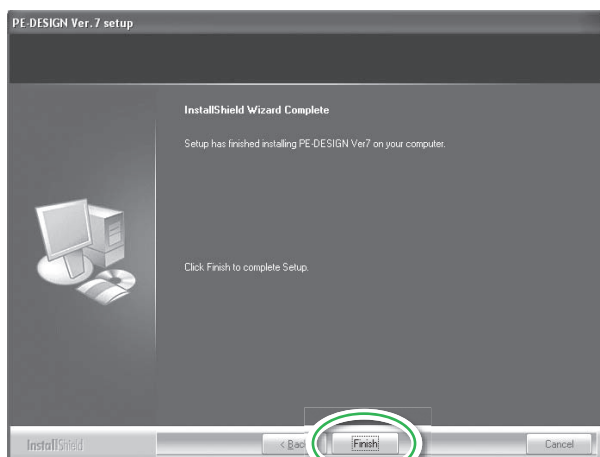
Note:

- Even though the installation is completed, do not remove the CD-ROM from the computer's CD-ROM drive.



Memo:

- If the following dialog box appears, it is not necessary to restart the computer.



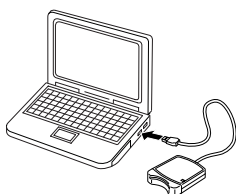
Click **Finish** to complete the installation of the software.

Step 2: Installing the Driver for the Card Writer Module

This section describes how to install the driver for the card writer module.

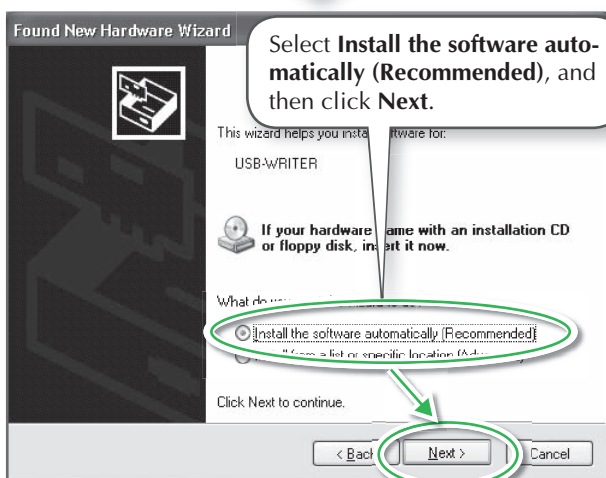
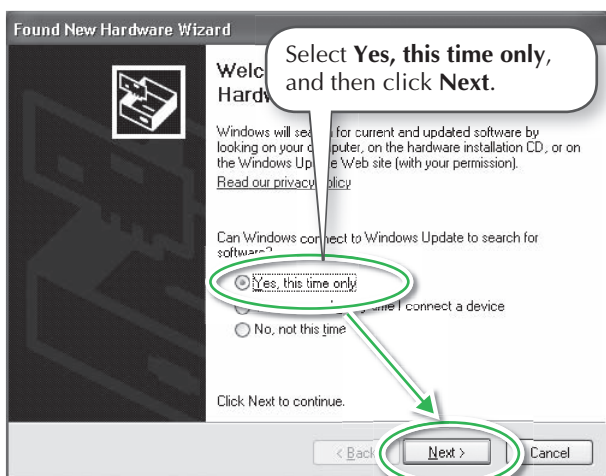
1 Plug the USB connector into the USB port on the computer.

Make sure that the connector is fully inserted.



2 Install the driver for the card writer module.

■ For Windows® XP with Service Pack 2 already installed and connected to the Internet:



! Note:

- If you upgrading from version 5.02 or later, skip this section and continue with the procedure described in “[STEP 3] Upgrading the USB card writer module” on page 19.

Memo:

- To check whether or not Service Pack 2 is installed, click **Start**, and then click on **Control Panel**, then, double-click on **System** to open the Properties page.

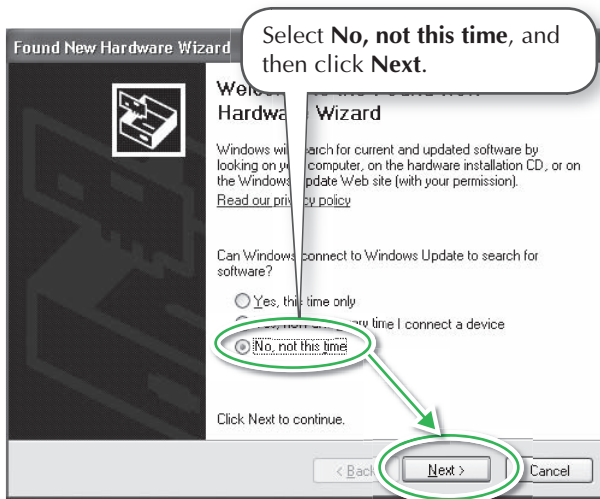
! Note:

- Depending on the computer, this dialog box may not appear. If it does not appear, skip this step and continue with the procedure.

■ For Windows® XP without Service Pack 2 installed and connected to the Internet:

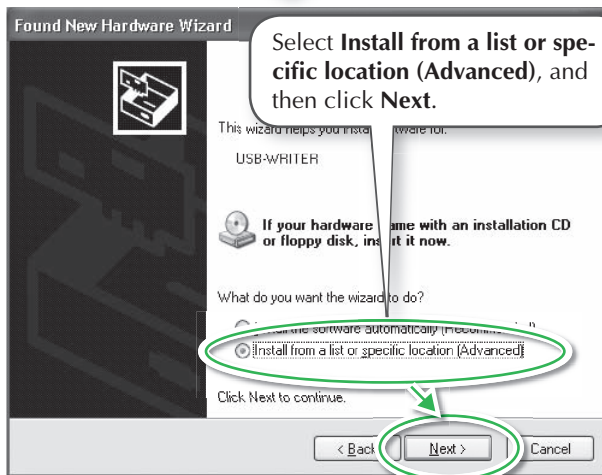
The installation of the driver is completed automatically (Steps 2 through 3 are not required.).

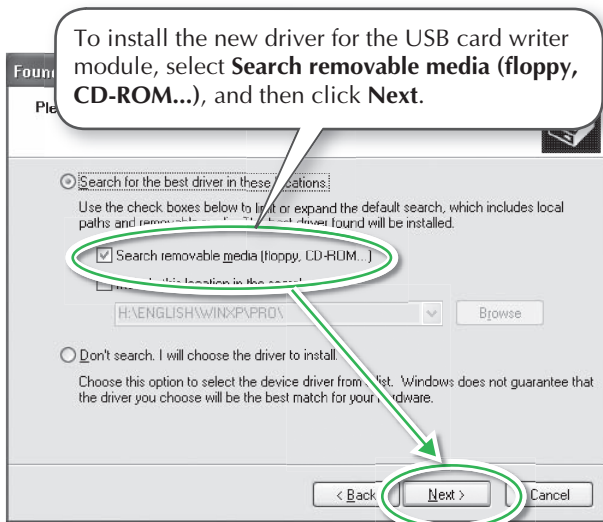
■ For Windows® XP not connected to the Internet:



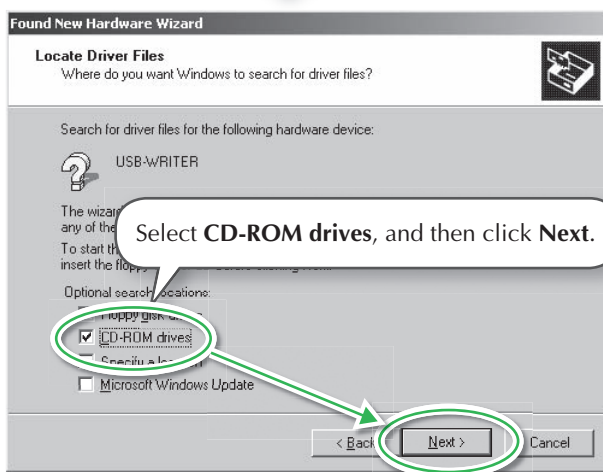
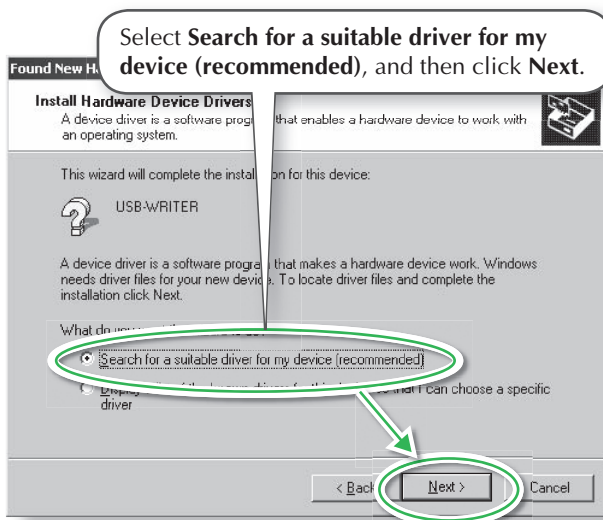
! Note:

- Depending on the computer, this dialog box may not appear. If it does not appear, skip this step and continue with the procedure.





■ For Windows® 2000:



3 Follow the instructions of the Found New Hardware Wizard (or Add New Hardware Wizard) to complete the installation of the driver.

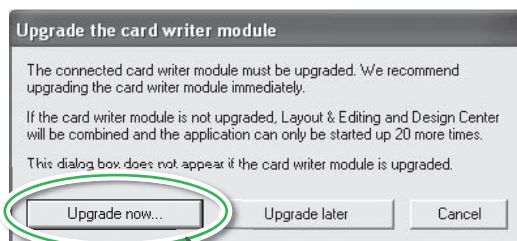
4 Remove the CD-ROM from the computer's CD-ROM drive.

Step 3: Upgrading the USB Card Writer Module

This section describes how to upgrade the USB card writer module for version 7. Users upgrading from version 5 or 6 must upgrade the card writer. After installing version 7, immediately follow the procedure below to upgrade the card writer for version 7.

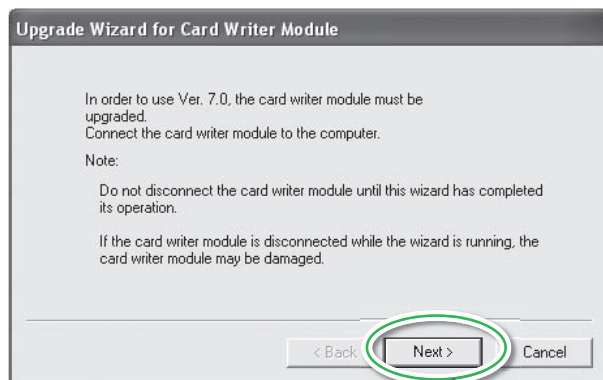
1 Start up Layout & Editing.

→ The dialog box shown below appears.



To begin the upgrade, click **Upgrade now**.

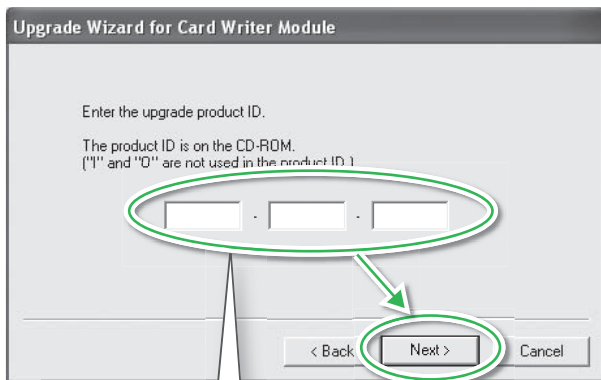
→ The Upgrade wizard starts up, and the first dialog box shown below appears.



Click **Next**.

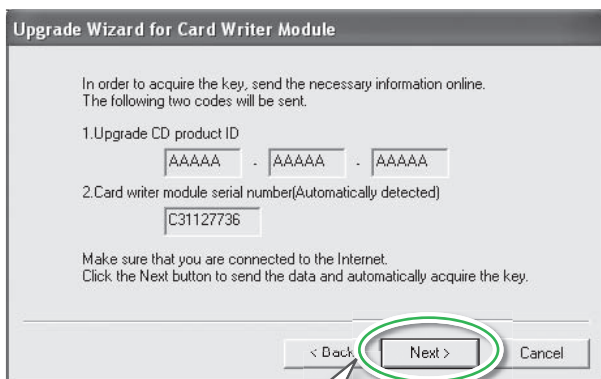
! Note:

- In order to upgrade the USB card writer module, you must be able to connect to the Internet. If you cannot connect to the Internet, contact your authorized dealer or Brother Customer Service.



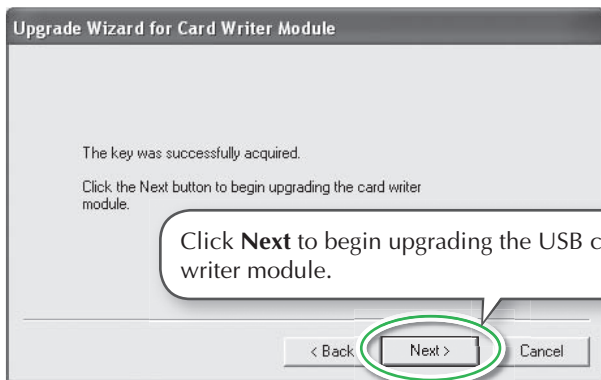
Type in the 15-digit product ID on the label attached to the CD-ROM case, and then click **Next**.

→ The entered product ID and the serial number automatically retrieved from the USB card writer module is displayed.



Click **Next** to access our server through the Internet and retrieve the upgrade key.

→ If the upgrade key has been successfully retrieved, the dialog box shown below appears.



Click **Next** to begin upgrading the USB card writer module.

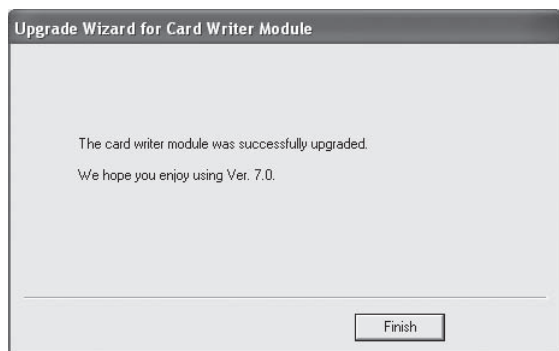
Note:

- If the product ID is incorrectly entered, the message “The product ID is incorrect. Check that a mistake was not made during typing.” appears.
- The uppercase letters “I” and “O” are not used in the product ID.

Note:

- If a firewall is being used, set it so that the Internet can temporarily be accessed while the upgrade key is being obtained.

→ If the upgrade has been completed successfully, the dialog box shown below appears.



Note:

- If a warning appears at any time, follow the instructions that are displayed.

Online Registration

If you wish to be contacted about upgrades and provided with important information such as future product developments and improvements, you can register your product online by following a simple registration procedure.

Click **Online Registration** on the **Help** menu of Layout & Editing to start up the installed Web browser and open the online registration page on our Web site.



Note:

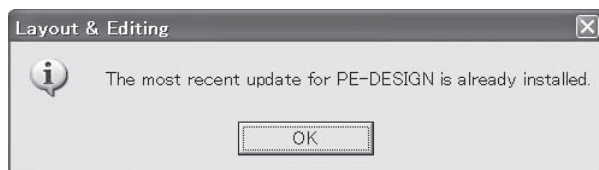
- Online registration may not be available in some areas.

Checking for the Latest Version of the Program

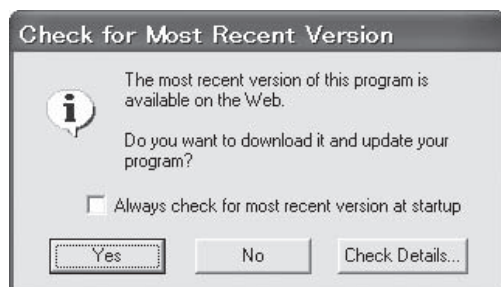
Click **Help** in Layout & Editing, then **Check for updates**.

The software is checked to determine whether or not it is the latest version.

If the message shown below appears, the latest version of the software is being used.



If the message shown below appears, the latest version of the software is not being used. Click **Yes**, and then download the latest version of the software from the Web site.



Note:

- This feature cannot be used if the computer is not connected to the Internet.



Memo:

- If the **Always check Latest version when launching** check box is selected, the software is checked at startup to determine whether or not it is the latest version.

Uninstallation

- 1 Click the Start button in the task bar, and then click Control Panel.
- 2 In the Control Panel window, double-click Add or Remove Programs.
- 3 In the dialog box that appeared, select this software, and then click Change/Remove.

Technical Support

Contact Technical Support if you have a problem. Please check the company web site (<http://www.brother.com/>) to find the Technical Support in your area.

Note:

- On the above website, first select your country. If your country is not listed, reference "others".
- Before contacting web site:
 1. Please have your Windows® Operating System updated to the most current version.
 2. The make and model number of the computer that you are using as well as the Windows® Operating System version.
 3. Information about any error messages that appear.
This information will help expedite your questions more quickly.

Using this Quick Reference Guide

This guide contains descriptions about the preparations necessary to begin using the software. Follow the instructions provided in this manual to complete the preparation and installation of the application.

In addition, this guide has practice exercises for understanding the operation of the software.

For details about the functions and operating procedures for the software, refer to the Instruction Manual, which is located in the Help menu of each application.

Using the Instruction Manual

After the software has been installed, the Instruction Manual (HTML format) can be viewed from the Start menu and each application.

Contents of the Instruction Manual

Details on the functions and operating procedures for the applications are provided in easy-to-understand descriptions. These applications can be used most efficiently by using the menu commands and tools in addition to the described methods for correcting errors.

Basic Operation

By following the step-by-step instructions for the desired operation, you can become familiar with the basic functions of the applications.

Advanced Operation

Details on each function are provided. Select the desired operation to display the corresponding details.

Operation Search

Details on the main functions are provided. Select the desired operation to display the corresponding details.

Index

Search for functions to view more information.

System requirements

The following environment is recommended in order to view the Instruction Manual.

Web browser: Microsoft Internet Explorer® Ver.5.01 or later

Opening the Instruction Manual




Note:

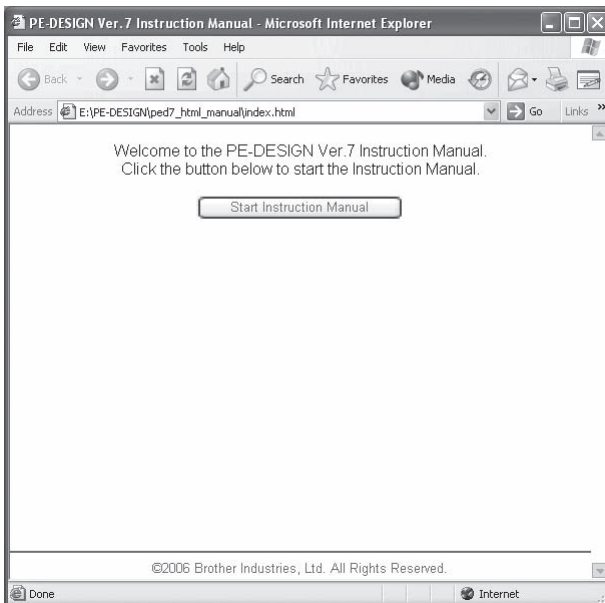
- Before opening the Instruction Manual, make sure that the software has been installed on the computer. For details, refer to “Installation (Please read before Installing!)” on page 12.

■ From the Start menu

1

Click , point to **All Programs**, then **PE-DESIGN Ver7**, and then click **Instruction Manual**.

The introduction page appears.



2 Click Start Instruction Manual.

The Instruction Manual appears.

Operation buttons

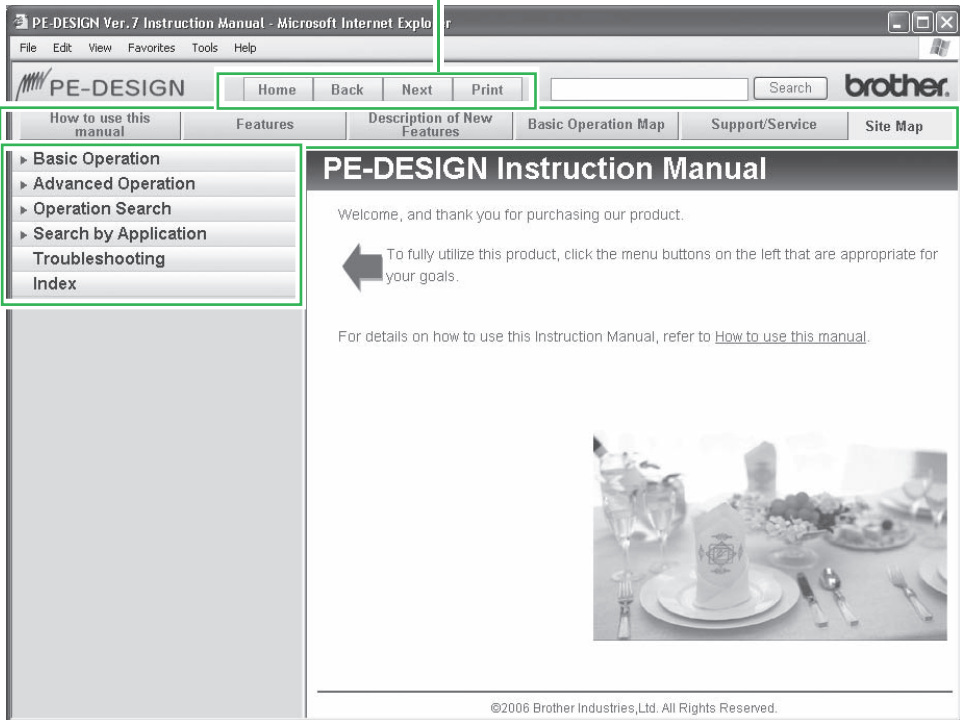
Buttons for operations, such as changing the page display and printing.

Support menu

Menu for providing help in using the manual or viewing the desired information.

Main menu

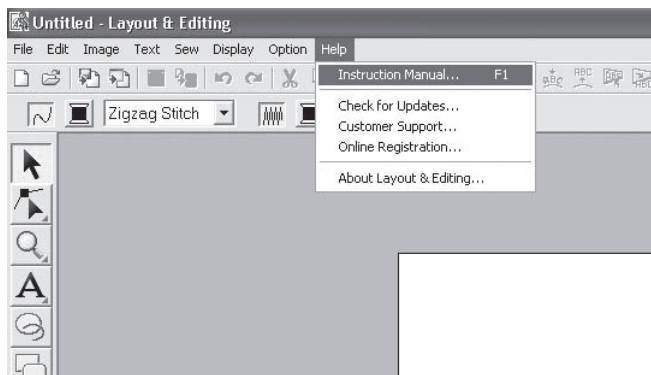
Click the button in the main menu for the desired operation.



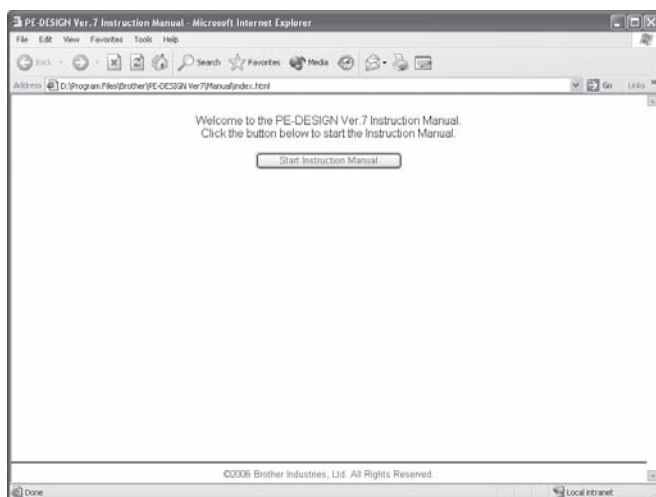
■ From the Help menu of the application

As an example, the procedure for opening the Instruction Manual from Layout & Editing follows.

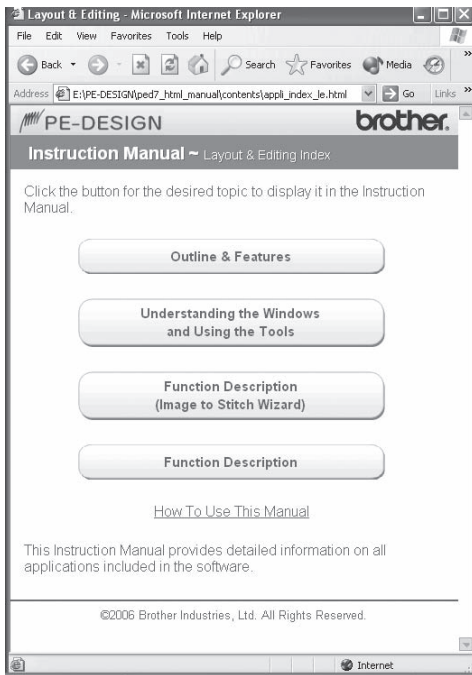
1 Click Help, then Instruction Manual.



2 Click Start Instruction Manual.



The introduction page appears.



3 Click the button for the desired topic.



Memo:

- If the Instruction Manual does not appear even after a button is clicked, change the Internet Explorer® settings according to the instructions that appear in the introduction page.

Instruction Manual (PDF format)

For a printer-friendly version of the Instruction Manual use the PDF file. This file would normally be available in the folder at the path **C:\Program Files\Brother\PE-DESIGN Ver7\Manual** on the drive where PE-DESIGN was installed.



Memo:

- Adobe® Reader® is required for viewing and printing the PDF version of the Instruction Manual.

Sew Types

The sewing attributes for each sew type are first set to their default settings; however, by changing the settings of the sewing attributes, you can create custom stitching. For details, refer to “Line sewing attributes” and “Region sewing attributes” (Layout & Editing and Design Center) of the Instruction Manual.

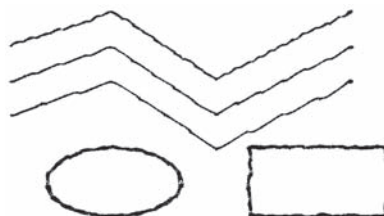
Line sew types

Zigzag Stitch



Running Stitch/Triple Stitch

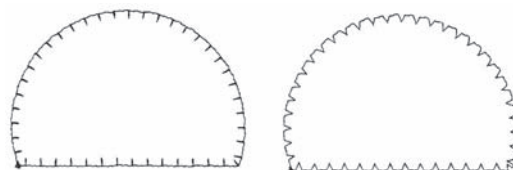
New!



Motif Stitch



E/V Stitch

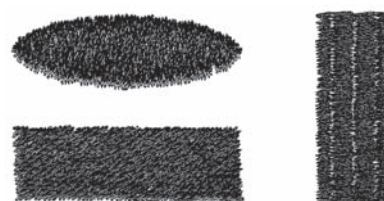


Region sew types

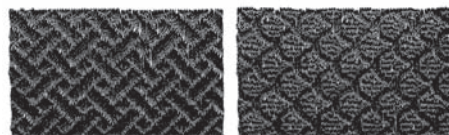
Satin Stitch



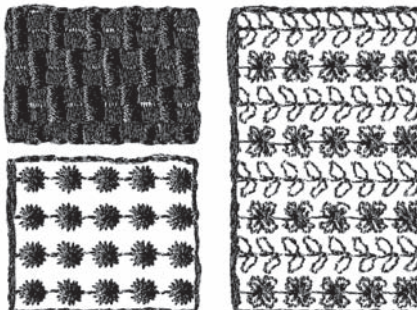
Fill Stitch



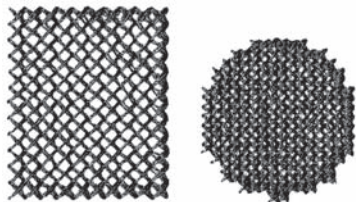
Programmable Fill Stitch



Motif Stitch



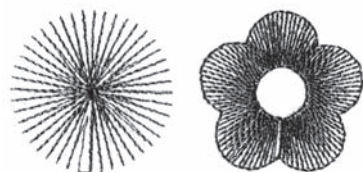
Cross Stitch



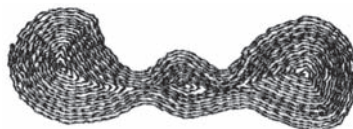
Concentric Circle Stitch



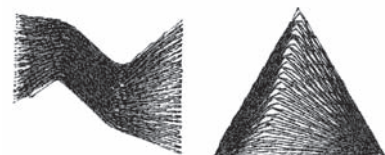
Radial Stitch



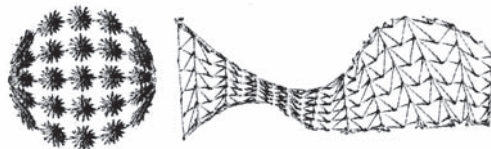
Spiral Stitch



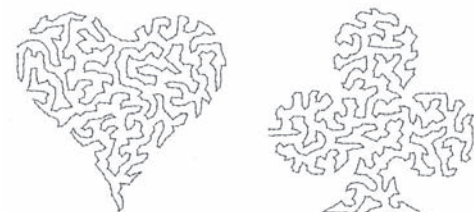
Piping Stitch

New!

Piping Stitch (motif setting)

New!

Random Walking Stitch

New!**Memo:**


- The stitching for the programmable fill stitch and the motif stitch depends on the selected stitch pattern. For details, refer to "Programmable fill stitch" and "Motif stitch" on "Line (or Region) sewing attributes" of the Instruction Manual.

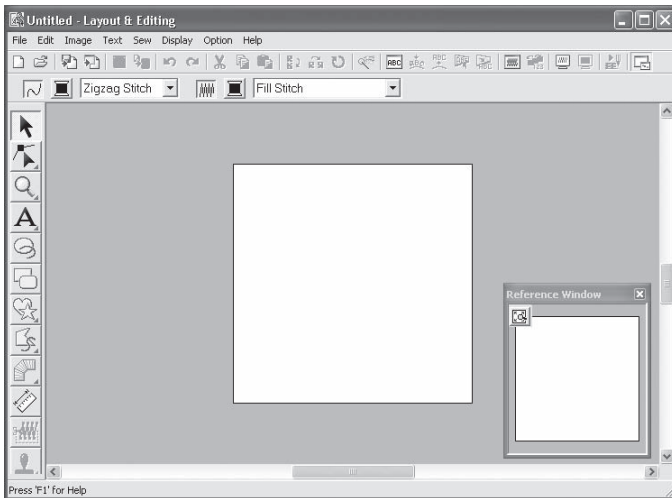
Getting Started

Starting Up/Exiting Applications

Starting Up Layout & Editing

Layout & Editing is used to automatically create embroidery patterns from images and to create embroidery patterns by combining drawn patterns and text. As an example, the Layout & Editing window is shown below.

- 1 Click , select **All Programs**, then **PE-DESIGN Ver7**. Select **Layout & Editing** to open the **Layout & Editing** window.
→ The Layout & Editing window appears.



Memo:

- To fill the entire screen with the Layout & Editing window, click the maximize button on the right end of the title bar.
- At this time, you can change the Design Page properties by using the menu command **Option – Design Page Property**. (For more details, refer to “Specifying the Design Page Size and Color” of the Instruction Manual) For this example, we will not change the Design Page settings.

Exiting the Application

When you are finished using an application, you can close it.

- 1 Click **File** in the menu bar, and then click **Exit**.
→ The window closes.



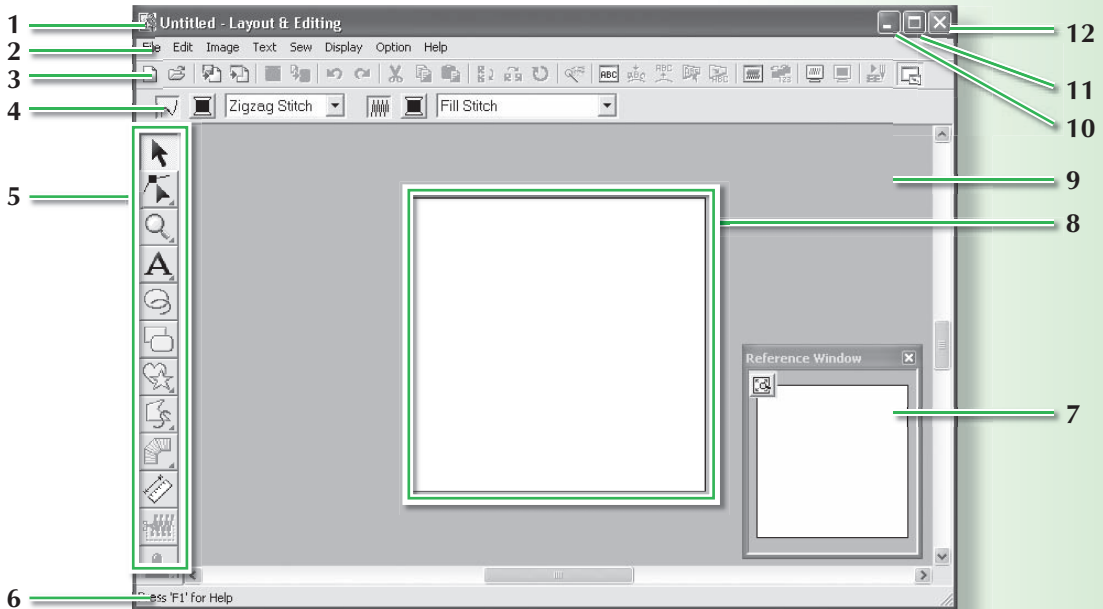
Memo:

- The window can also be closed by clicking the close button on the top right corner of the title bar.

Understanding Windows and Using Tools

Layout & Editing Window

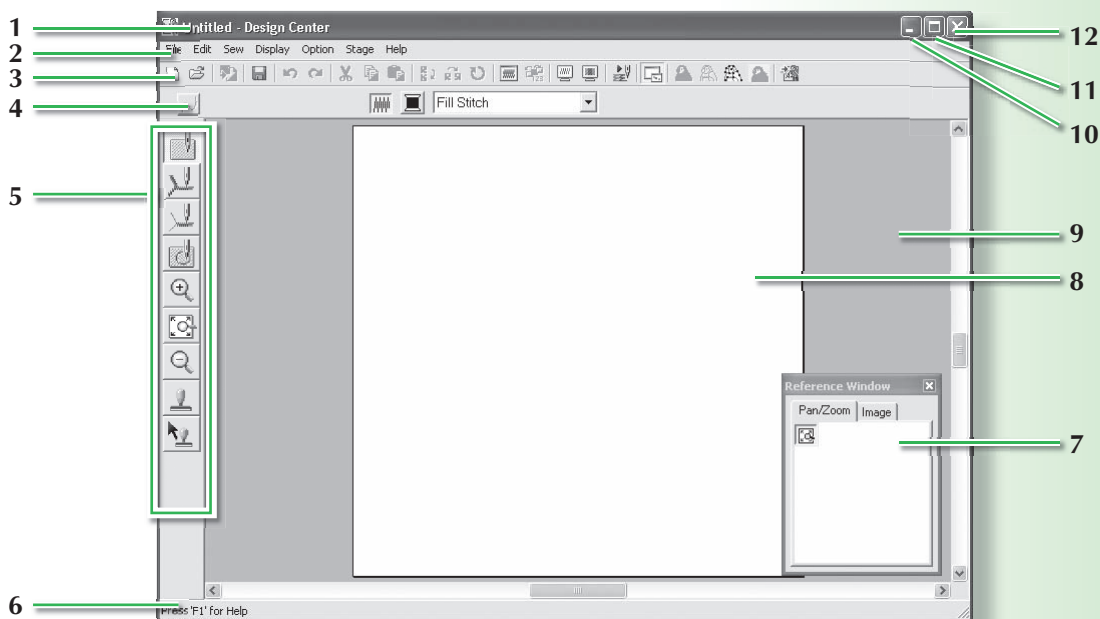
The default value for the Design Page size in this example is 100 x 100 mm.



- | | |
|---|--|
| <p>1 Title bar</p> <p>2 Menu bar
Provides access to the functions.</p> <p>3 Toolbar
Provides shortcuts for the menu commands.</p> <p>4 Sewing Attributes bar
Sets the sewing attributes (color and sew type) of lines and regions in the pattern.</p> <p>5 Tool Box
Used to create, select and edit patterns.</p> <p>6 Status bar
Provides helpful information.</p> | <p>7 Reference Window
Displays all patterns in the work area, giving you an overview while you work on a detailed area. (For more details, refer to “Viewing Patterns in the Reference Window” of the Instruction Manual.)</p> <p>8 Design Page
The actual part of the work area that can be saved and sewn.</p> <p>9 Work area</p> <p>10 Minimize button</p> <p>11 Maximize button</p> <p>12 Close button</p> |
|---|--|

Design Center Window

The default value for the Design Page size in this example is 100 x 100 mm.



1 Title bar

2 Menu bar

Provides access to the functions.

3 Toolbar

Provides shortcuts for the menu commands.

4 Sewing Attributes bar

Sets the sewing attributes (color and sew type) of the lines and regions in the pattern (only in the Sew Setting Stage)

5 Tool Box

Used to select and edit the image or pattern. Original Image Stage has no Tool Box; the other stages all have a different tools in the Tool Box (The window for the Sew Setting Stage is shown on this page.).

6 Status bar

Provides helpful information.

7 Reference Window

Displays all outlines and patterns in the work area, giving you an overview while you work on a detailed area. (For more details, refer to "Viewing patterns in the reference window" of the Instruction Manual.)

8 Design Page

The actual part of the work area that can be saved and sewn.

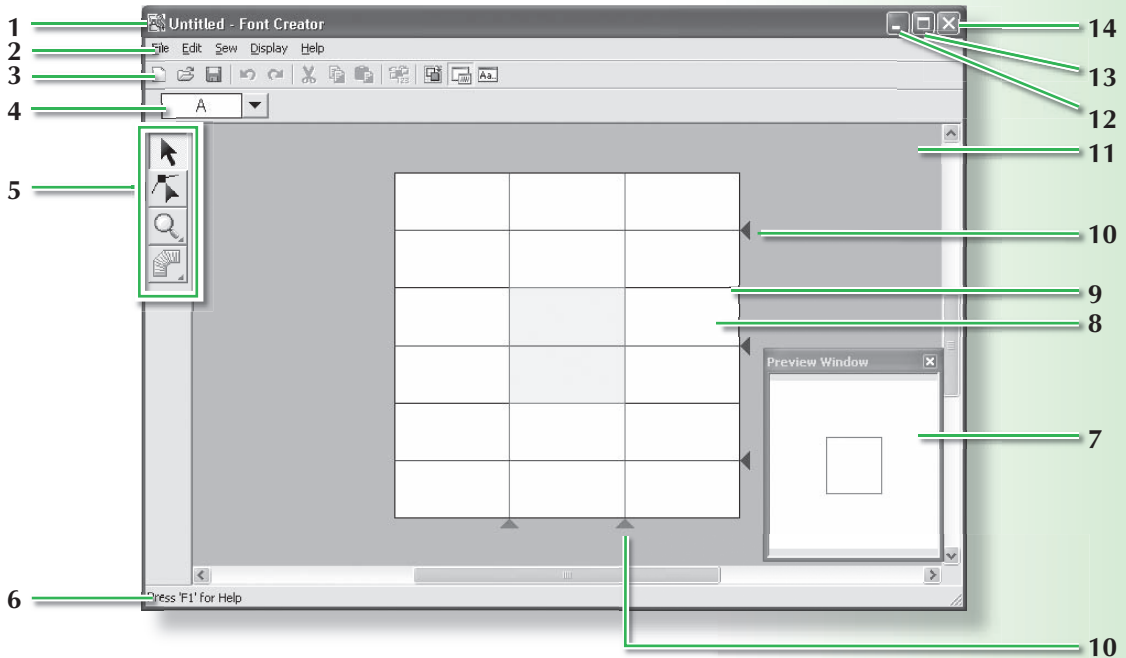
9 Work area

10 Minimize button

11 Maximize button

12 Close button

Font Creator Window



1 Title bar

2 Menu bar

Provides access to the functions.

3 Toolbar

Provides shortcuts for the menu commands.

4 Select Character bar

Allows characters from created fonts to be selected.

5 Tool Box

Used to select and create font pattern.

6 Status bar

Provides helpful information.

7 Preview window

Shows how the stitch pattern will be sewn.

8 Design Page

The actual part of the work area that can be saved.

9 Guidelines (fixed)

The distance between the two guidelines becomes the height of the font created.

10 Guidelines (movable)

These guidelines can be moved according to the shape of the created font. The distance between the two red guidelines becomes the width of the font created. The three blue guidelines are positioning lines for accent positions, the height of small characters, and the bottom edge of small characters.

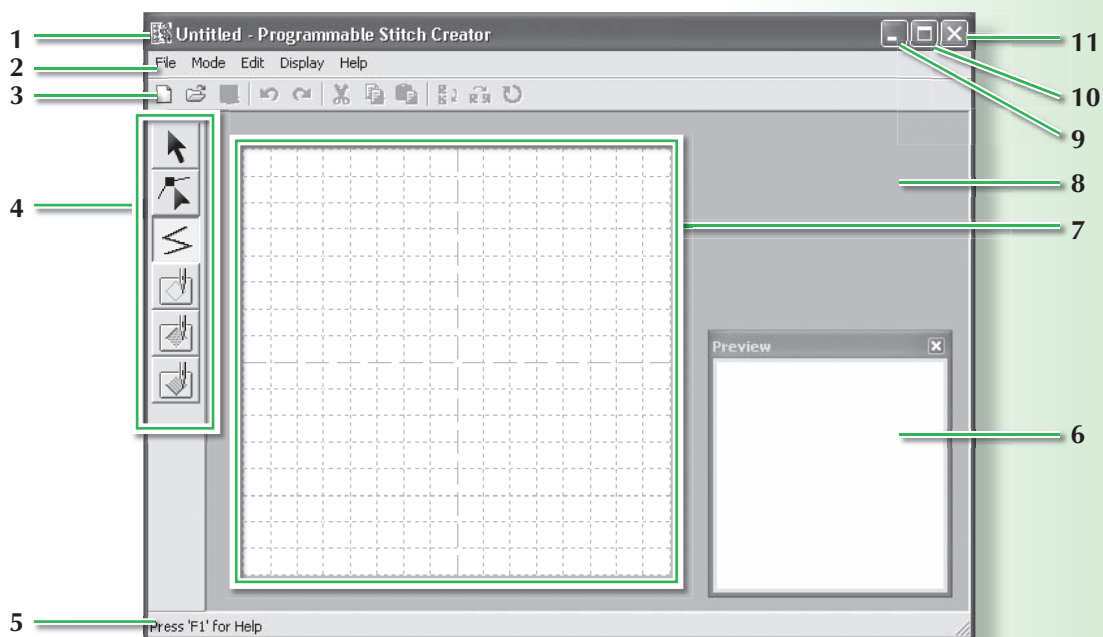
11 Work area

12 Minimize button

13 Maximize button

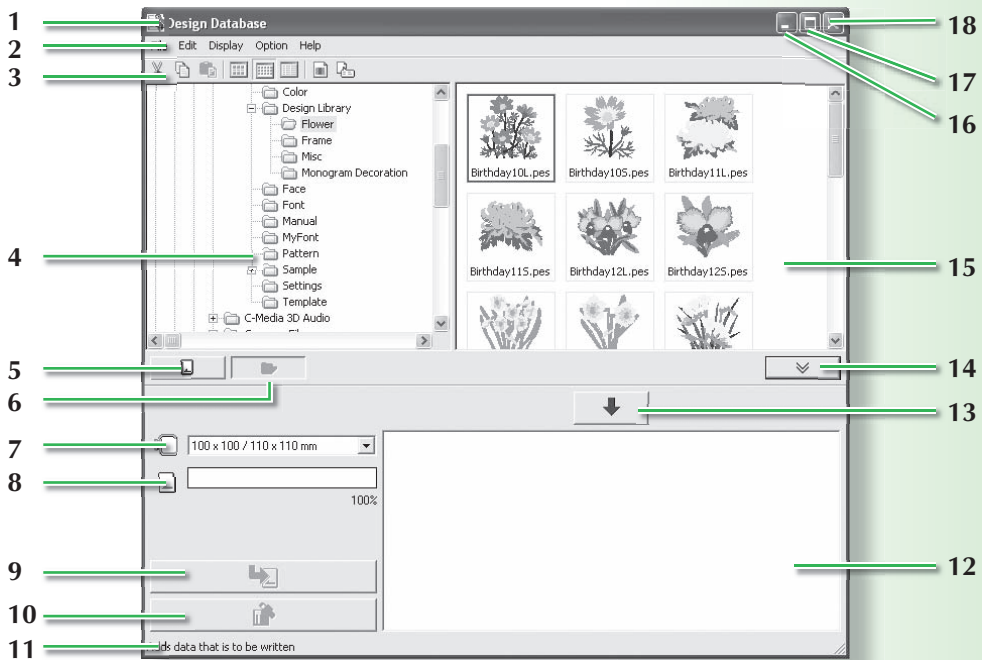
14 Close button

Programmable Stitch Creator Window



- | | |
|---|---|
| <p>1 Title bar</p> <p>2 Menu bar
Provides access to the functions.</p> <p>3 Toolbar
Provides shortcuts for the menu commands.</p> <p>4 Tool Box
Used to select and create fill and motif stitch patterns and stamps.
(The bottom four buttons do not appear in Motif mode.)</p> | <p>5 Status bar
Provides helpful information.</p> <p>6 Preview window
Shows how the stitch pattern will be sewn.</p> <p>7 Design Page
The actual part of the work area that can be saved.</p> <p>8 Work area</p> <p>9 Minimize button</p> <p>10 Maximize button</p> <p>11 Close button</p> |
|---|---|

Design Database Window



- 1 Title bar**
- 2 Menu bar**
Gives access to the functions.
- 3 Toolbar**
Provides shortcuts for the menu commands.
- 4 Folder pane**
Provides access to the folders on the computer and the results of any searches that were performed.
- 5 Card reading button**
Reads an original card.
- 6 Folder content display button**
The folder pane and contents pane display are switched to the folder contents.
- 7 Hoop size selector**
This selects the hoop size when writing a pattern to an original card.
- 8 Card capacity indicator**
Displays the selected design (displayed in the writing list) for the capacity of the original card.
- 9 Write button**
The selected design (displayed in the writing list) is written to the original card.
- 10 Remove button**
Returns the selected design (displayed in the writing list) to the unselected state.
- 11 Status bar**
Provides helpful information.
- 12 Writing list**
The list of designs to be written to the original card is displayed.
- 13 Add button**
The design selected in the contents pane view is displayed in the writing list.
- 14 Card writing box display/non-display button**
Press when writing the design to an original card. Click this button to hide or display the writing list.
- 15 Contents pane**
Displays thumbnails of all embroidery patterns in the selected folder.
- 16 Minimize button**
- 17 Maximize button**
- 18 Close button**

Automatically Converting an Image to an Embroidery Design (Auto Punch Function)

In this section, we are going to use the Auto Punch function to automatically create an embroidery pattern from an image.

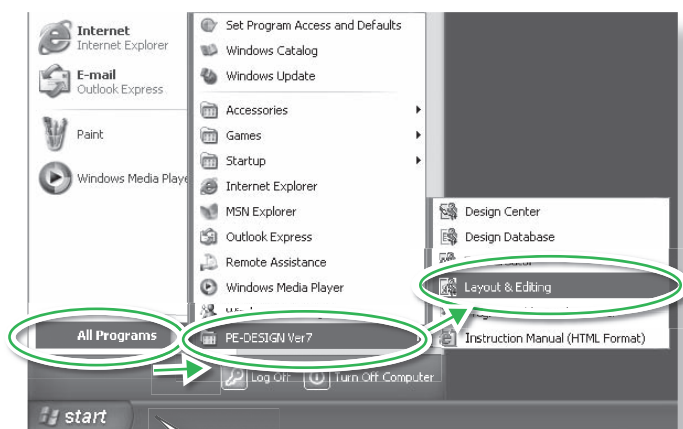
This procedure will go through each step of the basic operation.

- | | | |
|---------------|---|---------|
| Step 1 | Importing image data into Layout & Editing | page 36 |
| Step 2 | Automatically converting the image to an embroidery pattern | page 39 |
| Step 3 | Displaying a preview of the embroidery | page 41 |
| Step 4 | Saving the embroidery design | page 42 |
| Step 5 | Transferring the design to an original card | page 44 |

Step 1: Importing image data into Layout & Editing

First, we need to import the image that will be converted into an embroidery pattern. For this example, we will use the tulip image (tulip.bmp) provided with this application.

1 Start up Layout & Editing.



Click **start** , then, select **All Programs**, then **PE-DESIGN Ver7**, then, **Layout & Editing**.

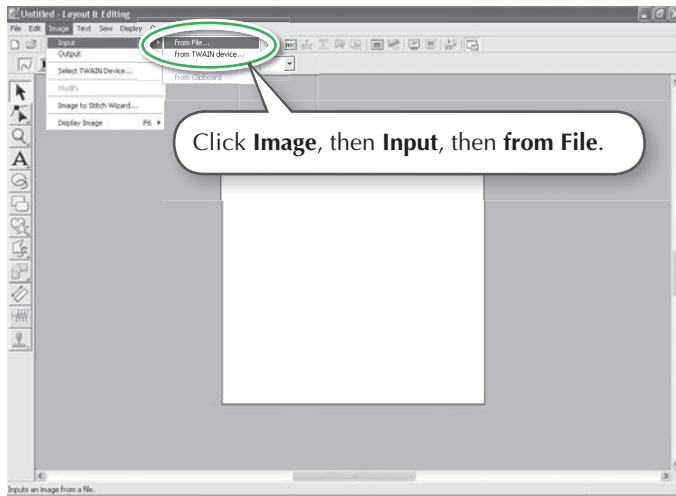
→ The Layout & Editing window appears.

2 Import the image.

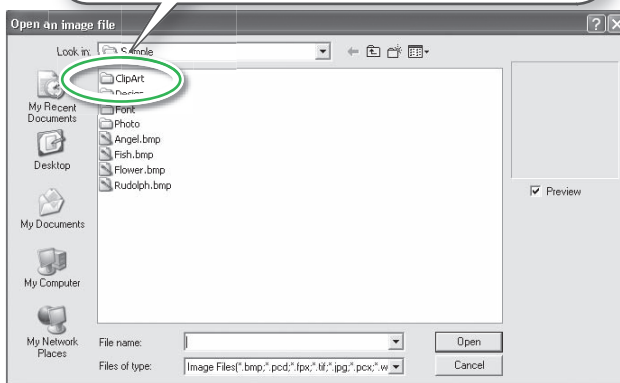


Memo:

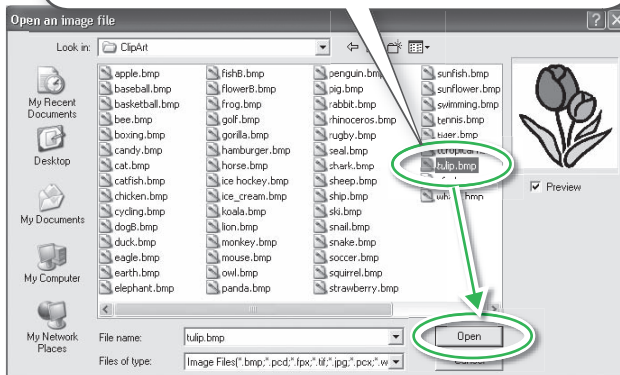
- The default value for the Design Page size in this example is 100 x 100 mm.
- You can change the Design Page size by using the menu command **Option-Design Page Property**.



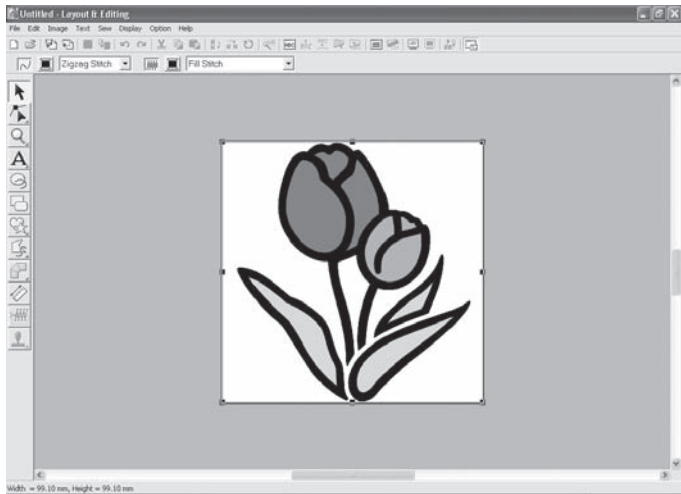
Double-click the **ClipArt** folder to open it.



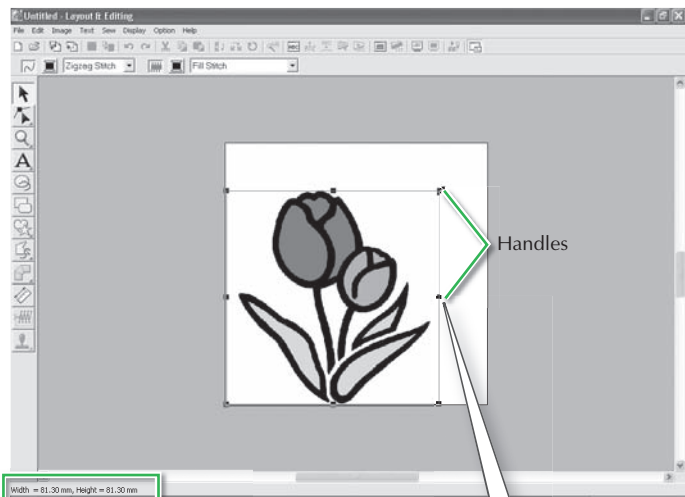
Select the sample file **tulip.bmp**, and then click **Open**, or double-click the file's icon.



→ The image appears in the work area.




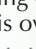






3 Adjust the image size and position.

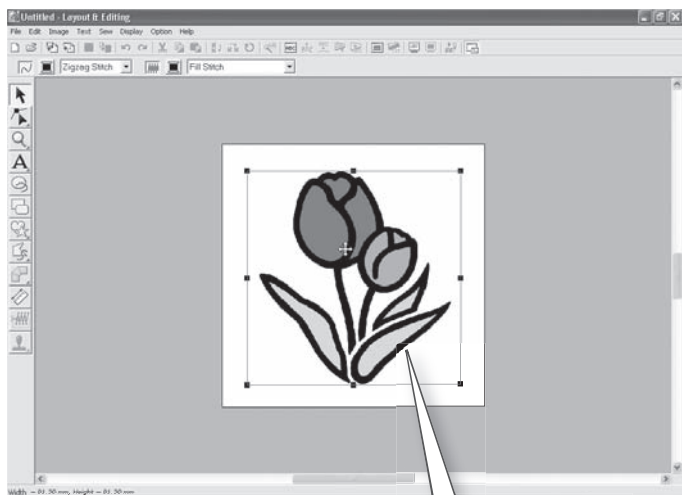


Drag the handle to adjust the selected image to the desired size.



Memo:

- The status bar shows the dimensions (width and height) of the image.
- The shape of the pointer changes to , , , or , depending on the handle that the pointer is over.
-  is for scaling the width.
-  is for scaling the height.
-  and  are for scaling both dimensions at the same time. (The height-to-width proportion is maintained.)
- If the **Shift** key is held down while a handle is dragged, the image is enlarged or reduced in both width and height from the center of the image. (The height-to-width proportion is maintained.)
- If the handles have disappeared, right-click the image, and then click **Modify Image** in the menu that appeared.



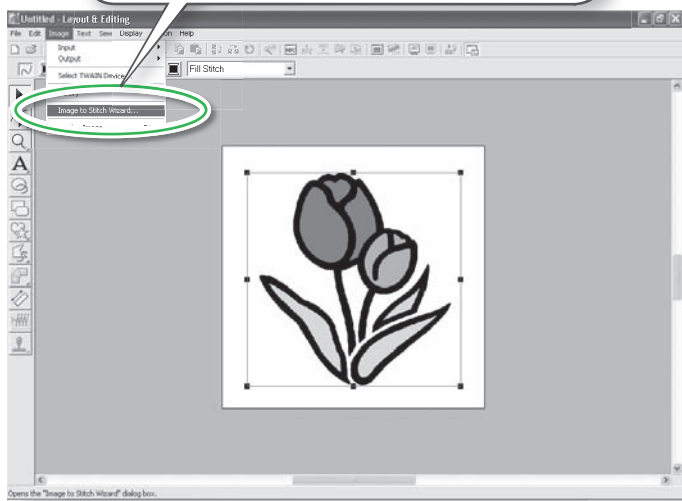
Move the pointer over the selected image, and then drag the image to the desired position.

Step 2: Automatically converting the image to an embroidery pattern

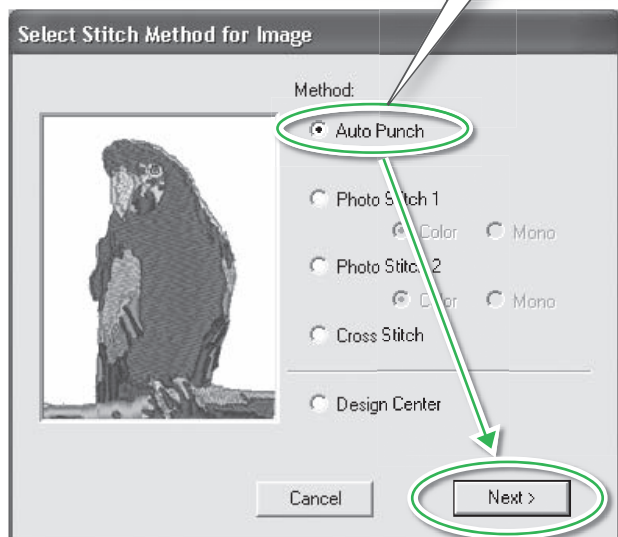
Next, the image will automatically be converted to an embroidery pattern.

- 1 Select the conversion method.

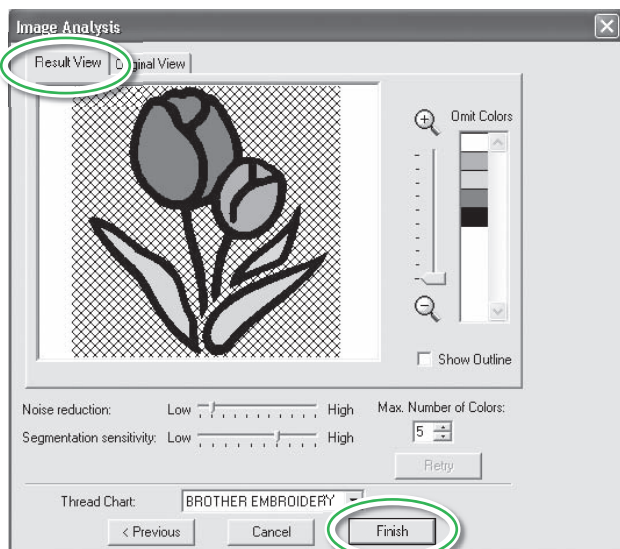
Click **Image**, then **Image to Stitch Wizard**.



Select **Auto Punch**, and then click **Next**.

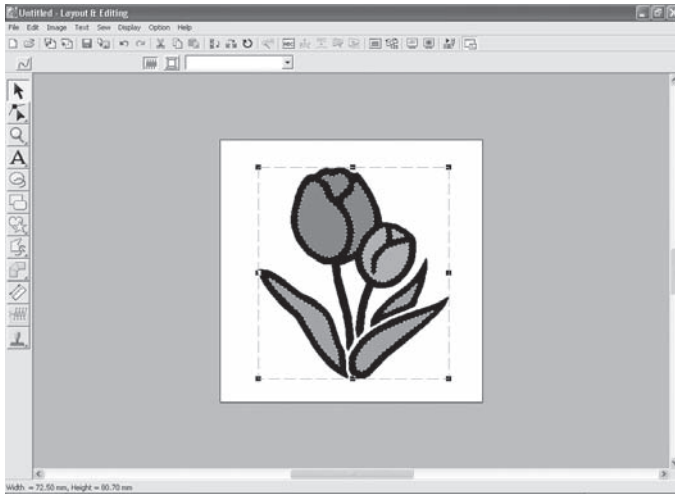


2 Convert the image to an embroidery pattern.



Check **Result View** tab to see the preview of the conversion, and then click **Finish**.

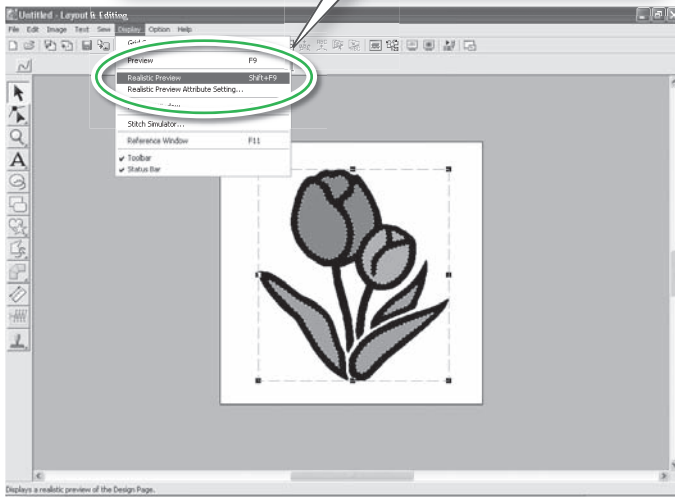
→ The generated embroidery pattern is displayed.

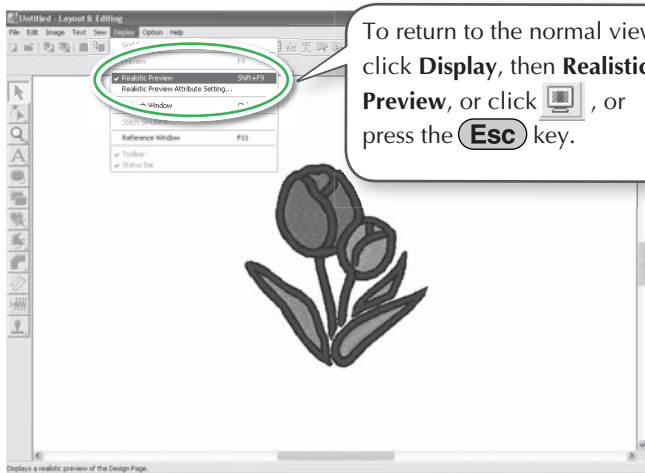
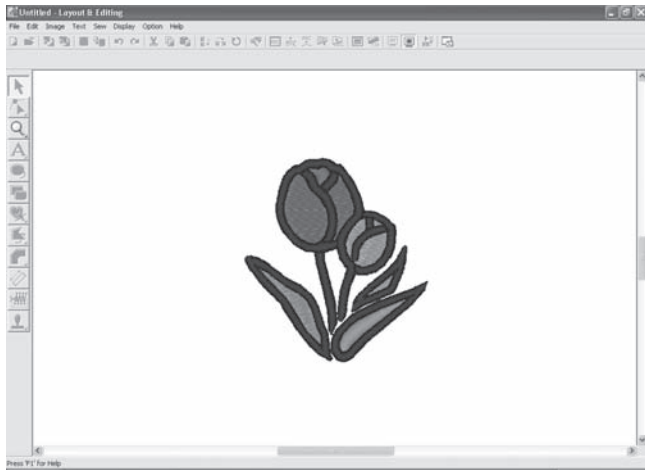



Step 3: Displaying a preview of the embroidery

Preview the finished embroidery.

Click **Display**, then **Realistic Preview**.

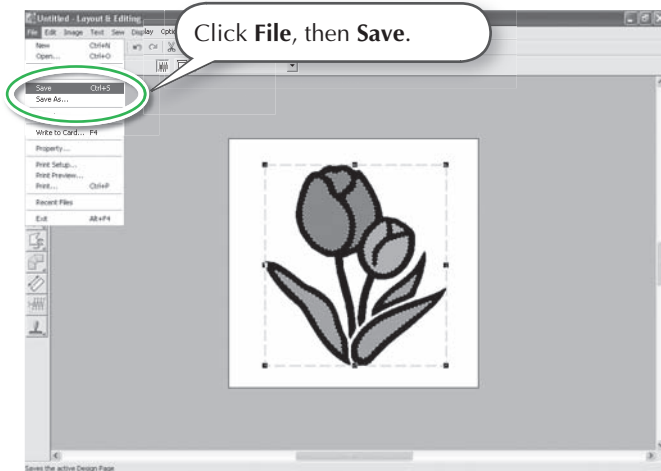




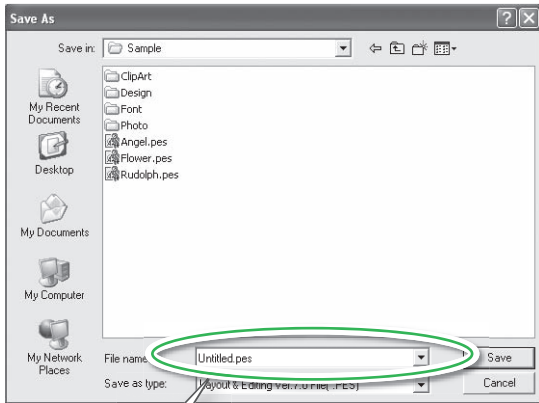
To return to the normal view, click **Display**, then **Realistic Preview**, or click , or press the **Esc** key.

Step 4: Saving the embroidery design

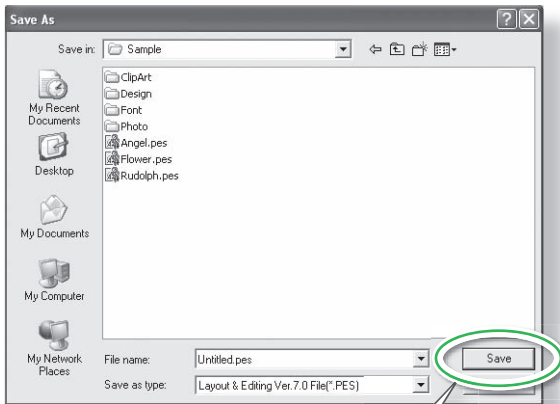
Once the embroidery design is finished, you may want to save it in order to retrieve it later.



Click **File**, then **Save**.



Select the drive and the folder, and then type in the file name.



Click **Save**.

Step 5: Transferring the design to an original card

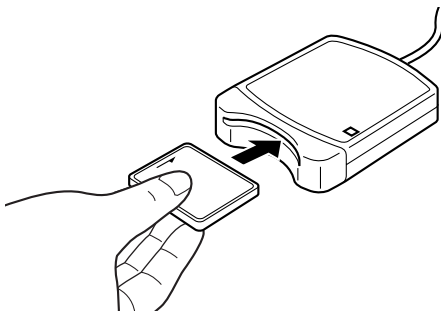
By writing a design to a media that can be used in your embroidery machine and transferring it to your embroidery machine, you can actually sew the design. For this example, we will transfer the design to an original card.



Memo:

- You can also use Floppy Disks, Compact Flash Card, and USB Media to save designs.

1 Insert an original card into the USB card writer module.

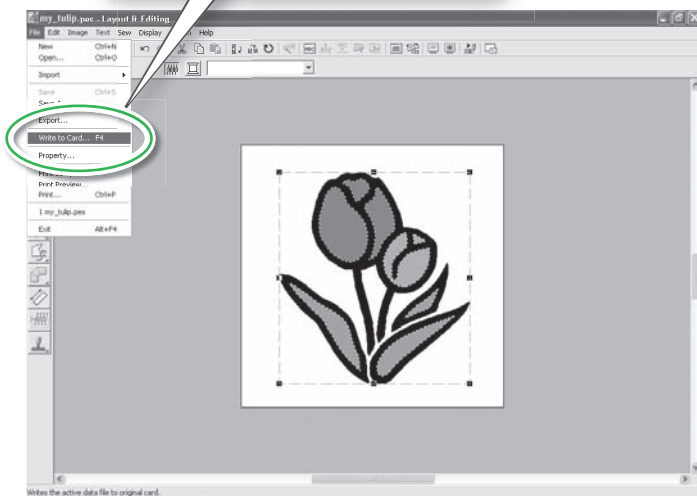


! Note:

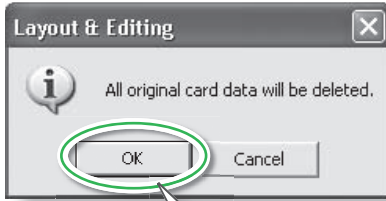
- The original card is inserted correctly when you hear it snap into place.

2 Transfer the embroidery design.

Click **File**, then **Write to Card**.



→ The following message appears.



Click **OK**.



→ The following message appears.



Click **OK**.

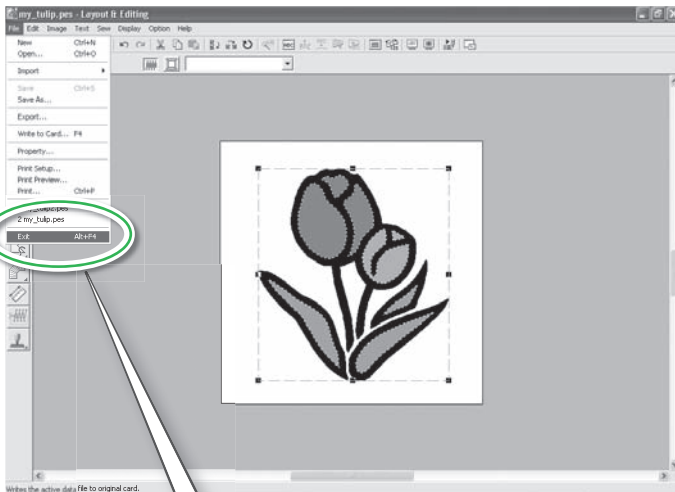
Note:

- Before using the original card, make sure that the designs on the card are no longer needed or make sure to store them on your hard drive or other storage media.

Note:

- If the card writer module is not correctly connected or powered, an error message of "No card writer module is connected. Please connect card writer module." will appear.
- If the original card is not inserted or is defective, an error message of "No original card is inserted. Please insert an original card." will appear.

3 Quit Layout & Editing.



Click **File**, then **Exit**.

Troubleshooting

If you have a problem, check the following solutions. If the solutions suggested do not correct the problem, contact your authorized dealer or Brother Customer Service.

Problem	Estimated Cause	Solution	Page
The software is not installed correctly.	An operation not described in the installation procedure was performed. (For example, Cancel was clicked or the CD-ROM was removed before the procedure was completed.)	Follow the instructions and correctly perform the procedure.	12
	The installer does not automatically start up.	Refer to memo: "If the installer does not automatically start up".	14
The message "No card writer module is connected. Please connect card writer module." appeared.	The driver for the USB card writer module is not installed correctly.	When the USB connector is correctly plugged into the USB port, the installer for the driver of the USB card writer module starts up. For details, refer to "Installing the driver for the card writer module" on page 16.	If the operation described at the left does not correct the problem, go to the Web site mentioned under "Technical Support". (Refer to page 22.)
The message "Old version is not installed correctly. Please install old version before installing this updated program." appears when the upgrade is being installed, even though an older version (version 5 or 6) is installed.	The installation information for the old version on the computer is not working properly.	Uninstall the older version from the computer, install the older version again, and then perform the upgrade.	If the operation described at the left does not correct the problem, go to the Web site mentioned under "Technical Support". (Refer to page 22.)
When upgrading from version 5.0 or 5.01, the installation was completed correctly, but the message "No card writer module is connected. Please connect card writer module." appeared, and the application does not start up.	The upgrade from version 5.0 or 5.01 was performed with the USB card writer module connected.	When the USB card writer module is unplugged, then re-plugged into the PC, the installer for the driver of the USB card writer module starts up.	16

Problem	Estimated Cause	Solution	Page
<p>When trying to upgrade from an older version, the message "Cannot connect to the Internet." or "The server could not be connected to. Wait a while, and then try connecting again." appeared and the USB card writer module could not be upgraded.</p>	<p>The computer with the USB card writer module connected to its USB port could not establish a connection to the Internet.</p>	<p>To upgrade the USB card writer module, the computer with the card writer module connected to its USB port must connect to the Internet. If firewall software is being used, it must be temporarily disabled during the upgrade. If a connection to the Internet cannot be established, contact your authorized dealer.</p>	<p>19</p>
<p>The USB card writer module does not operate correctly.</p>	<p>Not enough power is being supplied.</p>	<p>Connect the USB card writer module to a USB port on the computer or to a self-powered USB hub that can supply enough power to the card writer module.</p>	<p>13</p>

Read the following before opening the CD-ROM package

Thank you for purchasing this software. Before opening the CD-ROM package for this software, carefully read the following Product Agreement, which has been provided for this product. Use this software only if you agree to the terms of this agreement. By opening the CD-ROM package, you agree to the conditions of its use. This product cannot be returned after it has been opened.

Product Agreement

1) General terms

This is an agreement between you (the end-user) and our company for this product.

2) Use of this product

You may install and use this product on only one computer.

3) Limitations on duplications

You may not duplicate this product, except for backup purposes.

4) Limitations on modifications

You may not modify or disassemble this product in any way.

5) Limitations on transfer

This software may not be transferred to or used in any other way by a third party.

6) Warranty

We accept no responsibility for your choice or use of this product or for any damages that may arise out of its use.

7) Others

This product is protected by copyright laws.

Portions of this product were created using technology from Softfoundry International Pte. Ltd.

Free Manuals Download Website

<http://myh66.com>

<http://usermanuals.us>

<http://www.somanuals.com>

<http://www.4manuals.cc>

<http://www.manual-lib.com>

<http://www.404manual.com>

<http://www.luxmanual.com>

<http://aubethermostatmanual.com>

Golf course search by state

<http://golfingnear.com>

Email search by domain

<http://emailbydomain.com>

Auto manuals search

<http://auto.somanuals.com>

TV manuals search

<http://tv.somanuals.com>