

Outdoor Living Catalog



Table of Contents

Indoor / Outdoor Heaters	3
Outdoor Patio Heater	8
Outdoor Fireplaces	13
Outdoor Gas Lamps	20
Mosquito Traps	21
Mosquito Traps Accessories	24
Wood Racks	25
Wood Racks / Accessories	26
Accessories	27
Gel Bowls	29
Index	31

NEW



Electric

EWTR890SP

NEW



Electric

EWTR800SP

EWTR890SP "Vacation Day" Electric Heater

- Heats Up To a 12 Foot Circle
- Safety Tilt Switch
- 8 foot Cord
- Weather Resistant Hardware
- CSA Certified

Power: 1,200 watt Halogen Bulb (Equivalent to approx. 4,095 BTUs);
Uses a Standard 120V Grounded Outlet

Dimensions: 19.7" L x 19.7" W x 37.4" H

Warranty: 1 Year - Limited

UPC: 795008 310069

Carton Size: 22" x 19.7" x 21.1"

Weight: 21.4 lbs.

EWTR800SP "New Orleans" Electric Heater

- Heats Up To a 12 Foot Circle
- Safety Tilt Switch
- 8 foot Cord
- Weather Resistant Hardware
- CSA Certified

Power: 1,200 watt Halogen Bulb (Equivalent to approx. 4,095 BTUs);
Uses a Standard 120V Grounded Outlet

Dimensions: 19.7" L x 19.7" W x 33.3" H

Warranty: 1 Year - Limited

UPC: 795008 310038

Carton Size: 22.4" x 21.7" x 21.1"

Weight: 14.3 lbs.

NEW



Electric

EWTR850SP

NEW



Electric

EWTS830SP

EWTR850SP "Montage" Electric Heater

- Heats Up To a 12 Foot Circle
- Safety Tilt Switch
- 8 foot Cord
- Weather Resistant Hardware
- CSA Certified

Power: 1,200 watt Halogen Bulb (Equivalent to approx. 4,095 BTUs);
Uses a Standard 120V Grounded Outlet

Dimensions: 19.7" L x 19.7" W x 33.5" H

Warranty: 1 Year - Limited

UPC: 795008 310052

Carton Size: 22" x 19.7" x 21.1"

Weight: 19.2 lbs.

EWTS830SP "Nevada" Electric Heater

- Heats Up To a 12 Foot Circle
- Safety Tilt Switch
- 8 foot Cord
- Weather Resistant Hardware
- CSA Certified

Power: 1,200 watt Halogen Bulb (Equivalent to approx. 4,095 BTUs);
Uses a Standard 120V Grounded Outlet

Dimensions: 19.7" L x 19.7" W x 33.1" H

Warranty: 1 Year - Limited

UPC: 795008 310045

Carton Size: 20.9" x 20.9" x 15"

Weight: 10.8 lbs.

NEW



Electric

EWTR720SP

NEW



Electric

EWUR730SP

EWTR720SP "Northgate" Electric Heater

- Heats Up To a 12 Foot Circle
- Safety Tilt Switch
- 8 foot Cord
- Weather Resistant Hardware
- CSA Certified

Power: 1,200 watt Halogen Bulb (Equivalent to approx. 4,095 BTUs);
Uses a Standard 120V Grounded Outlet

Dimensions: 19.7" L x 19.7" W x 34.6" H

Warranty: 1 Year - Limited

UPC: 795008 310007

Carton Size: 23" x 19.7" x 22"

Weight: 18.7 lbs.

EWUR730SP "Northgate" Electric Heater

- Heats Up To a 12 Foot Circle
- Safety Tilt Switch
- 8 foot Cord
- Weather Resistant Hardware
- CSA Certified

Power: 1,200 watt Halogen Bulb (Equivalent to approx. 4,095 BTUs);
Uses a Standard 120V Grounded Outlet

Dimensions: 19.7" L x 19.7" W x 63" H

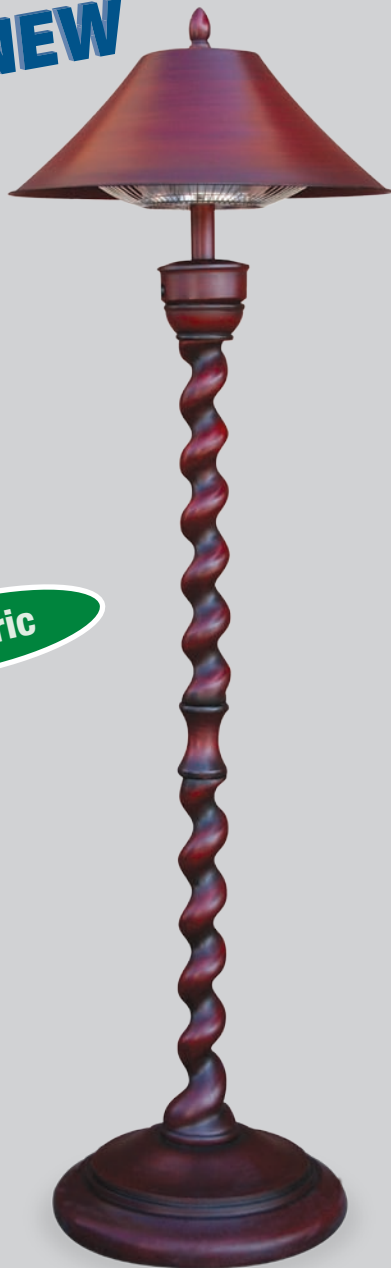
Warranty: 1 Year - Limited

UPC: 795008 310014

Carton Size: 24.4" x 20.9" x 26"

Weight: 33 lbs.

NEW



Electric

EWUR810SP

NEW



Electric

EWUR840SP

EWUR810SP "New Orleans" Electric Heater

- Heats Up To a 12 Foot Circle
- Safety Tilt Switch
- 8 foot Cord
- Weather Resistant Hardware
- CSA Certified

Power: 1,200 watt Halogen Bulb (Equivalent to approx. 4,095 BTUs);
Uses a Standard 120V Grounded Outlet

Dimensions: 19.7" L x 19.7" W x 63" H

Warranty: 1 Year - Limited

UPC: 795008 310076

Carton Size: 24.4" x 20.9" x 26"

Weight: 28.7 lbs.

EWUR840SP "Asiana" Electric Heater

- Heats Up To a 12 Foot Circle
- Safety Tilt Switch
- 8 foot Cord
- Weather Resistant Hardware
- CSA Certified

Power: 1,200 watt Halogen Bulb (Equivalent to approx. 4,095 BTUs);
Uses a Standard 120V Grounded Outlet

Dimensions: 19.7" L x 19.7" W x 63" H

Warranty: 1 Year - Limited

UPC: 795008 310083

Carton Size: 24.4" x 20.9" x 26"

Weight: 26.5 lbs.



EWT700SP

EWT700SP

“Sumatra” Electric Heater

- Heats Up To a 12 Foot Circle
- Safety Tilt Switch
- 8 foot Cord
- Weather Resistant Hardware
- CSA Certified

Power: 1,200 watt Halogen Bulb (Equivalent to approx. 4,095 BTUs);
Uses a Standard 120V Grounded Outlet

Dimensions: 22.8” L x 22.8” W x 39.8” H

Warranty: 1 Year - Limited

UPC: 795008 007457

Carton Size: 23.7” x 23.7” x 19.7”

Weight: 26.5 lbs.



EWU710SP

EWU710SP

“Sumatra” Electric Heater

- Heats Up To a 12 Foot Circle
- Safety Tilt Switch
- 8 foot Cord
- Weather Resistant Hardware
- CSA Certified

Power: 1,200 watt Halogen Bulb (Equivalent to approx. 4,095 BTUs);
Uses a Standard 120V Grounded Outlet

Dimensions: 22.8” L x 22.8” W x 67.9” H

Warranty: 1 Year - Limited

UPC: 795008 007464

Carton Size: 29.1” x 19.7” x 23.7”

Weight: 39.7 lbs.



62900



92000

62900

Stainless Steel / Green Portable Outdoor Heater

- Heats Up To a 10 Foot Circle
- ODS (Oxygen Depletion Sensor)
- Safety Tilt Switch
- Pilot with Piezo Ignition
- Weather Resistant Hardware
- CSA Certified

Engine: 11,000 BTU - IPP 8

Dimensions: 14" W-B x 20.5" W-D x 39" H

Warranty: 1 Year - Limited

UPC: 795008 629000

Carton Size: 31" x 21" x 15"

Weight: 23 lbs.

92000

Stainless Steel Portable Outdoor Heater

- Heats Up To a 10 Foot Circle
- ODS (Oxygen Depletion Sensor)
- Safety Tilt Switch
- Pilot with Piezo Ignition
- Weather Resistant Hardware
- CSA Certified

Engine: 11,000 BTU - IPP 8

Dimensions: 12" W-B x 20.5" W-D x 39" H

Warranty: 1 Year - Limited

UPC: 795008 920008

Carton Size: 31.5" x 21" x 14"

Weight: 23 lbs.



GWT501A



153100

GWT501A Antique Copper Portable Outdoor Heater

- Heats Up To a 10 Foot Circle
- ODS (Oxygen Depletion Sensor)
- Safety Tilt Switch
- Pilot with Piezo Ignition
- Weather Resistant Hardware
- CSA Certified

Engine: 11,000 BTU - IPP 8
Dimensions: 14" W-B x 20.5" W-D x 39" H
Warranty: 1 Year - Limited
UPC: 795008 006108
Carton Size: 31" x 21" x 15"
Weight: 23 lbs.

153100 Black Residential Outdoor Heater

- Heats Up To a 20 Foot Circle
- Safety Tilt Switch
- Pilot with Piezo Ignition
- Weather Resistant Hardware
- Removable Control Panel
- Hinged Tank Shroud Door
- CSA Certified

Engine: 40,000 BTU - IPP E1
Dimensions: 24" W-B x 26.5" W-D x 93" H
Warranty: 1 Year - Limited
UPC: 795008 153109
Carton Size: 28.4" x 28.6" x 12"
Weight: 60 lbs.



Optional Wheel
Kit Available
Model #269922

200209



Optional Wheel
Kit Available
Model #269922

GWU501E

200209

Stainless Steel Deluxe Residential Outdoor Heater

- Heats Up To a 20 Foot Circle
- Safety Tilt Switch
- Pilot with Multi-spark Electronic Ignition
- Weather Resistant Hardware
- Removable Control Panel
- Sliding Tank Shroud
- CSA Certified

Engine: 40,000 BTU - IPP E1

Dimensions: 20" W-B x 34" W-D x 93" H

Warranty: 1 Year - Limited

UPC: 795008 200209

Carton Size: 36" x 22.5" x 20.5"

Weight: 88 lbs.

GWU501E

Antique Copper Residential Outdoor Heater

- Heats Up To a 20 Foot Circle
- Safety Tilt Switch
- Pilot with Piezo Ignition
- Weather Resistant Hardware
- Removable Control Panel
- Hinged Tank Shroud Door
- CSA Certified

Engine: 40,000 BTU - IPP E1

Dimensions: 20" W-B x 34" W-D x 93" H

Warranty: 1 Year - Limited

UPC: 795008 410059

Carton Size: 35.5" x 20.7" x 22.3"

Weight: 76 lbs.



Optional Wheel
Kit Available
Model #269922

233000



Natural Gas

233010

233000

Stainless Steel Commercial Outdoor Heater

- Heats Up To a 20 Foot Circle
- Safety Tilt Switch
- Pilot with Multi-spark Electronic Ignition
- Weather Resistant Hardware
- Removable Control Panel
- Sliding Tank Shroud
- CSA Certified

Engine: 40,000 BTU - IPP E3

Dimensions: 20" W-B x 34" W-D x 93" H

Warranty: 1 Year - Limited

UPC: 795008 233009

Carton Size: 35.5" x 20.5" x 22"

Weight: 88 lbs.

233010

Stainless Steel Natural Gas Commercial
Outdoor Heater

- Heats Up To a 20 Foot Circle
- Safety Tilt Switch
- Pilot with Multi-spark Electronic Ignition
- Weather Resistant Hardware
- Removable Control Panel
- Sliding Tank Shroud
- CSA Certified

Engine: 40,000 BTU - IPP E3

Dimensions: 20" W-B x 34" W-D x 93" H

Warranty: 1 Year - Limited

UPC: 795008 233016

Carton Size: 35.5" x 20.5" x 22"

Weight: 88 lbs.



Optional Wheel Kit Available
Model #269922

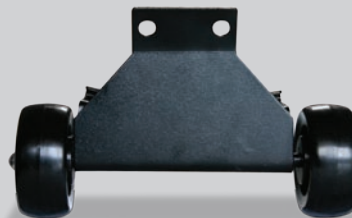
235000



251941



251958



269922

235000

- Stainless Steel Triple Dome Commercial Outdoor Heater**
- Heats Up To a 20 Foot Circle
 - Safety Tilt Switch
 - Pilot with Multi-spark Electronic Ignition
 - Weather Resistant Hardware
 - Removable Control Panel
 - Sliding Tank Shroud
 - CSA Certified

Engine: 40,000 BTU - IPP E3
Dimensions: 20" W-B x 34" W-D x 93" H
Warranty: 1 Year - Limited
UPC: 795008 023501
Carton Size: (1) 28.4" x 20.3" x 20.9"
 (2) 41.8" x 36" x 6"
Weight: 129 lbs.

251941

28" Cover (*Heater Not Included*)
 Fits 153100 Heater
UPC: 728649 251941

251958

37" Cover (*Heater Not Included*)
 Fits 200209, 233000, GWU501E, 233010 and 235000 Heaters
UPC: 728649 251958

269922

Wheel Kit
 • Fits Deluxe and Commercial Outdoor Patio Heaters (200209, 233000, 235000, GWU501E)
UPC: 728649 269922

NEW



WAD820SP

NEW



WAD840SP

WAD820SP Slate / Marble with Copper Accents Outdoor Firebowl

Dimensions: 34" Dia. x 21.5" High

Warranty: 1 Year - Limited

UPC: 728649 731214

Carton Size: 36" x 36" x 6.4"

Weight: 58.3 lbs.

WAD840SP Granite Mantle with Decorative Cast Iron Accents Outdoor Firebowl

Dimensions: 35" Dia. x 22.8" High

Warranty: 1 Year - Limited

UPC: 728649 731337

Carton Size: 37" x 37" x 8"

Weight: 93.5 lbs.

NEW



WAD850SP



WAD792SP

WAD850SP Oil Rubbed Bronze Outdoor Firebowl

Dimensions: 40" Dia. x 25.2" High

Warranty: 1 Year - Limited

UPC: 728649 731474

Carton Size: 33.5" x 33.5" x 14"

Weight: 44 lbs.

WAD792SP Oil Rubbed Bronze Outdoor Firebowl

Dimensions: 40" Dia. x 25.2" High

Warranty: 1 Year - Limited

UPC: 728649 730637

Carton Size: 33.5" x 33.5" x 14"

Weight: 44 lbs.



WAD506AS



ZAS701A



WAD506B

WAD506AS Mosaic Tile / Stainless Steel Outdoor Firebowl
Dimensions: 45" Dia. x 21.5" High
Warranty: 1 Year - Limited
UPC: 728649 729556
Carton Size: 37" x 35.8" x 9.8"
Weight: 72.8 lbs.

WAD506B Mosaic Tile / Copper Outdoor Firebowl
Dimensions: 45" Dia. x 21.5" High
Warranty: 1 Year - Limited
UPC: 728649 266860
Carton Size: 37" x 35.8" x 9.8"
Weight: 72.8 lbs.

ZAS701A Mosaic Tile Table
Dimensions: 18" Dia. x 24.75" High
Warranty: 1 Year - Limited
UPC: 728649 729655
Carton Size: 22" x 22" x 6"
Weight: 46.2 lbs.





WAD794SP



WAD796SP



WAD794SP Ceramic Tile Outdoor Firebowl
Dimensions: 39" L x 28" W x 19.5" H
Warranty: 1 Year - Limited
UPC: 728649 279136
Carton Size: 41" x 30.3" x 8.7"
Weight: 44 lbs.

WAD796SP Outdoor Firebowl with Folding Legs
Dimensions: 35" Dia. x 13.5" High
Warranty: 1 Year - Limited
UPC: 728649 729242
Carton Size: 37.6" x 37" x 8.3"
Weight: 23.4 lbs.

**WAF501CS****WAF513C**

WAF501CS Black Outdoor Firehouse
Dimensions: 28.3" L x 24.5" W x 40.5" H
Warranty: 1 Year - Limited
UPC: 728649 278085
Carton Size: 29.5" x 25.6" x 11.2"
Weight: 44 lbs.

WAF513C Copper Accented Outdoor Firehouse
Dimensions: 25" L x 20.5" W x 45.3" H
Warranty: 1 Year - Limited
UPC: 728649 268086
Carton Size: 23.6" x 28" x 17.3"
Weight: 47.3 lbs.



WAF741SP



WAF830SP

WAF741SP Cast Iron Outdoor Firehouse
Dimensions: 22" Dia. x 31.5" H
Warranty: 1 Year - Limited
UPC: 728649 279129
Carton Size: 23" x 23" x 15"
Weight: 59.7 lbs.

WAF830SP Black Outdoor Firehouse
Dimensions: 28.76" L x 28.74" W x 34.25" H
Warranty: 1 Year - Limited
UPC: 728649 731450
Carton Size: 29" x 8" x 29"
Weight: 46.21 lbs.



GAD860SP



- GAD860SP** LP Gas Outdoor Firebowl with Slate/Marble Mantel
- 40K BTU Cast Iron Burner
 - Hidden Control Panel with Electronic Ignition
 - Handcrafted Slate/Marble Mantel with Porcelain Steel Bowl
 - Protective Cover Included

Dimensions:

21.7 in H x 41.26 in W x 41.26 in D

Warranty: 1 Year - Limited

UPC: 728649 731733

Carton Size: 43.5" x 43.5" x 11.2"

Weight: 162 lbs.



GTL7179SP



284826

- GTL7179SP** Outdoor LP Gas Lamp
- Safety Tilt Switch
 - Steel Construction
 - Decorative Oil-Rubbed Bronze Finish
 - Integrated Push and Turn Ignition
 - Simple Assembly
 - 1 lb LP Tank Not Included
 - CSA Certified

Power: 1,500 BTU

Dimensions: 83" H x 16.5" Dia

Warranty: 1 Year - Limited

UPC: 795008 007471

Carton Size: 14.4" x 23.4" x 18.9"

Weight: 41 lbs.

284826

Stainless Steel Patio Torch, In-Ground
67" High (9.9 lbs.)

284840

Stainless Steel Patio Torch, Deck Mount
(Not Shown)
30" High (11 lbs.)

Significantly reduces your mosquito population within 3-4 weeks.

EXCLUSIVE FEATURES	
	<p>FineTune® We've simplified our exclusive baiting system, allowing consumers the ability to adjust octenol release to match species in their area.</p>
	<p>Instant Start Just turn on the gas at the cylinder, push the multi-spark electronic ignitor and SkeeterVac is operating quietly and odor-free.</p>
	<p>TacTrap™ The patented contrast pattern of our sticky trap helps direct mosquitoes' flight patterns into our vacuum trap to improve capture yields.</p>
	<p>No Tools Our 1-2-3 assembly is easy. Simply snap the post to the base and head, dial in the octenol level and hand-tighten the regulator to the cylinder.</p>



CORDLESS



COVERAGE



CO₂ RATING

SV-15

Mosquito Trap

- 15,000 cc/hr – 25% More CO₂ Output Than Comparable Models
- 50% More Trapping Area 3 Times Longer Bait Life
- Patented FineTune® Baiting System with Adjustable Octenol Output
- Attracts, Traps & Kills Mosquitoes, Black Flies, No-see-ums, Biting Midges and Sand Flies
- Powerful Attractants – CO₂; Attractant Lure; Visual Contrast
- Simple Assembly – No Tools Required
- Exclusive FineTune® Baiting System Allows Consumers to Adjust Lure Release

Dimensions: 12.1" W x 25" D x 19.2" H

Warranty: 1 Year - Limited

UPC: 835322 004029

Carton Size: 16" x 16" x 16"

Weight: 15 lbs.

Mosquito Traps

Significantly reduces your mosquito population within 3-4 weeks.

EXCLUSIVE FEATURES	
	<p>Vac&Tac® Dual Trapping System</p> <ul style="list-style-type: none"> • Powerful vacuum draws in mosquitoes on approach, increases capture rate • High contrast patented TacTrap™ increases attraction • High tack insures trapping, doesn't stick to you
	<p>FineTune® Baiting System</p> <ul style="list-style-type: none"> • Enhances attracting power of CO₂ • Adjust the variable dial to the mosquito species in your backyard • Lure lasts at least 60 days • Accepts most major brands of mosquito lures
	<p>Motion Lighting</p> <ul style="list-style-type: none"> • Attracts a broader range of species • Increases capture rate
	<p>WaveDrawer®</p> <ul style="list-style-type: none"> • Oversized, easy to empty • Doesn't reduce vacuum power as it fills • No messy nets to manage

NEW

Uses **MULTIPLE BRANDS** of Lures



CORDLESS



COVERAGE



CO₂ RATING



DUAL TRAPS

SV3100

Mosquito Trap

- Works All Day Every Day to Significantly Reduce Biting Insect Populations
- Kills Female Biting Insects To Disrupt Breeding and Reduce Population
- Attracts, Traps and Kills Biting Insects
- Converts Clean-burning Propane Into CO₂, Proven The Most Powerful Mosquito Attractant
- Lighting Technology Protects You Against More Mosquito Species
- Quiet And Odorless
- 6 Powerful Attractants – CO₂; Attractant Lure; Moisture; Heat; Light; Visual Contrast
- Unique Dual Trapping System with Patented Technology

- Can Use Different Branded Lures
- Simple Assembly – No Tools Required

Dimensions: 12.1" W x 25" D x 19.2" H

Warranty: 1 Year - Limited

UPC: 835322 200087

Carton Size: 17" x 16" x 21"

Weight: 18.7 lbs.

Significantly reduces your mosquito population within 3-4 weeks.

EXCLUSIVE FEATURES

	<p>Vac&Tac® Dual Trapping System</p> <ul style="list-style-type: none"> • Powerful vacuum draws in mosquitoes on approach, increases capture rate • High contrast patented TacTrap™ increases attraction • High tack insures trapping, doesn't stick to you
	<p>FineTune® Baiting System</p> <ul style="list-style-type: none"> • Enhances attracting power of CO₂ • Adjust the variable dial to the mosquito species in your backyard • Lure lasts at least 60 days • Accepts most major brands of mosquito lures
	<p>Motion Lighting</p> <ul style="list-style-type: none"> • Attracts a broader range of species • Increases capture rate
	<p>WaveDrawer®</p> <ul style="list-style-type: none"> • Oversized, easy to empty • Doesn't reduce vacuum power as it fills • No messy nets to manage

NEW

Uses **MULTIPLE BRANDS** of Lures



CORDLESS



COVERAGE



CO₂ RATING



DUAL TRAPS

SV5100

- Mosquito Trap**
- Works All Day Every Day to Significantly Reduce Biting Insect Populations
 - Kills Female Biting Insects To Disrupt Breeding and Reduce Population
 - Attracts, Traps and Kills Biting Insects
 - Converts Clean-burning Propane Into CO₂, Proven The Most Powerful Mosquito Attractant
 - Lighting Technology Protects You Against More Mosquito Species
 - Quiet And Odorless
 - 6 Powerful Attractants – CO₂; Attractant Lure; Moisture; Heat; Light; Visual Contrast
 - Unique Dual Trapping System with Patented Technology

- Can Use Different Branded Lures
- Simple Assembly – No Tools Required

Dimensions: 26.4" W x 19.3" D x 29.5" H

Warranty: 1 Year - Limited

UPC: 835322 200094

Carton Size: 24.5" x 15" x 21"

Weight: 35.2 lbs.



CPSX000021 TacTrap™ Replacement Traps

- For Use with Most Blue Rhino® SkeeterVac® Traps
- Patented Pattern Improves Attraction
- Unique glue traps biting insects but won't stick to you

Warranty: 1 Year - Limited
UPC: 835322 000021
Master Pack Qty: 18 pcs
Carton Size: 5" x 8" x 2.5"
Weight: 0.5 lbs.

CPSX000014 FineTune® Biting Insect Lure

- For Use with Most Blue Rhino® SkeeterVac® Traps

Warranty: 1 Year - Limited
UPC: 835322 000014
Master Pack Qty: 20 pcs
Carton Size: 5" x 8" x 2.5"
Weight: 0.16 lbs.

NEW



W-1859

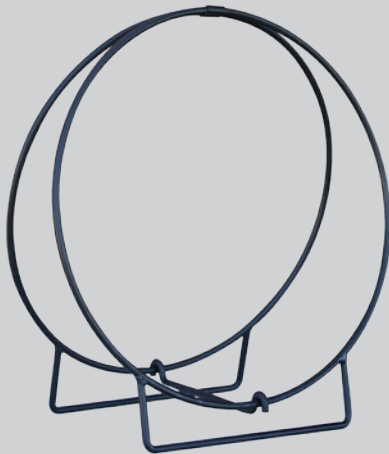


W-1560

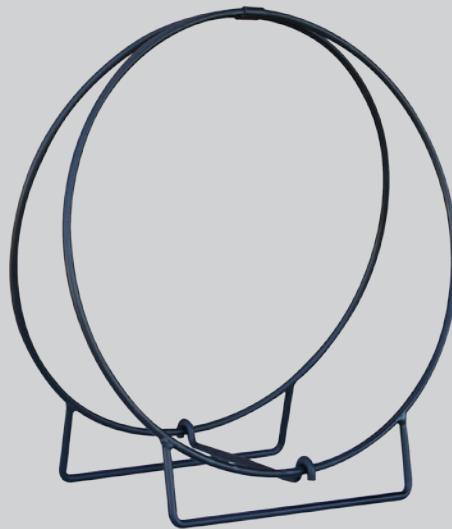


W-1881

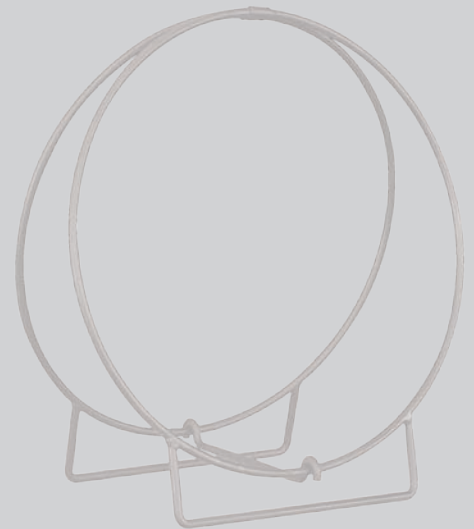
1/2 " Solid Stock



W-1890



W-1836



W-7736

- W-1859 **NEW!** Contemporary Log Rack
43" High x 70" Wide (58 lbs.)
- W-1560 Black 60" Long Log Rack
33" High x 60" Wide (15 lbs.)
- W-1881 Black 40" Diameter Tubular Log Hoop
43" High (9 lbs.)
- W-1890 Black 24" Diameter Log Hoop
27" High (10.9 lbs.)

- W-1836 Black 36" Diameter Log Hoop
39" High (17 lbs.)
- W-7736 Stainless Steel 36" Diameter Log Hoop
39" High (17 lbs.)



W-1151



W-1168



203445

304 Stainless Steel – Indoor or Outdoor



C-7723



C-7727



C-7730



C-1541



C-1546



C-1549

W-1151 Large Black Log Rack with Wheels
39.5" High x 15" Wide (19 lbs.)

W-1168 Heavy Weight Canvas Log Tote with Closed Ends
20" High x 37" Wide (1.4 lbs.)

203445 Leather Gloves
13.5" High x 7" Wide

C-7723 23" 5 Bar 304 Stainless Steel Log Grate (1/2" Bar)
16.5" Deep x 23" Wide (13.9 lbs.)

C-7727 27" 6 Bar 304 Stainless Steel Log Grate (5/8" Bar)
16.3" Deep x 27" Wide (12.8 lbs.)

C-7730 30" 7 Bar 304 Stainless Steel Log Grate (3/4" Bar)
16.8" Deep x 30" Wide (18.1 lbs.)

C-1541 24" Bar Grate - Hex Shape for Outdoor Fireplaces
7" High x 24" Wide (29.1 lbs.)

C-1546 27" Bar Grate - Hex Shape for Outdoor Fireplaces
7" High x 27" Wide (36.8 lbs.)

C-1549 30" Bar Grate - Hex Shape for Outdoor Fireplaces
7" High x 30" Wide (43.6 lbs.)



C-1791

C-1571

C-1841

C-1710

C-1751



W-1171



261735



W-1161

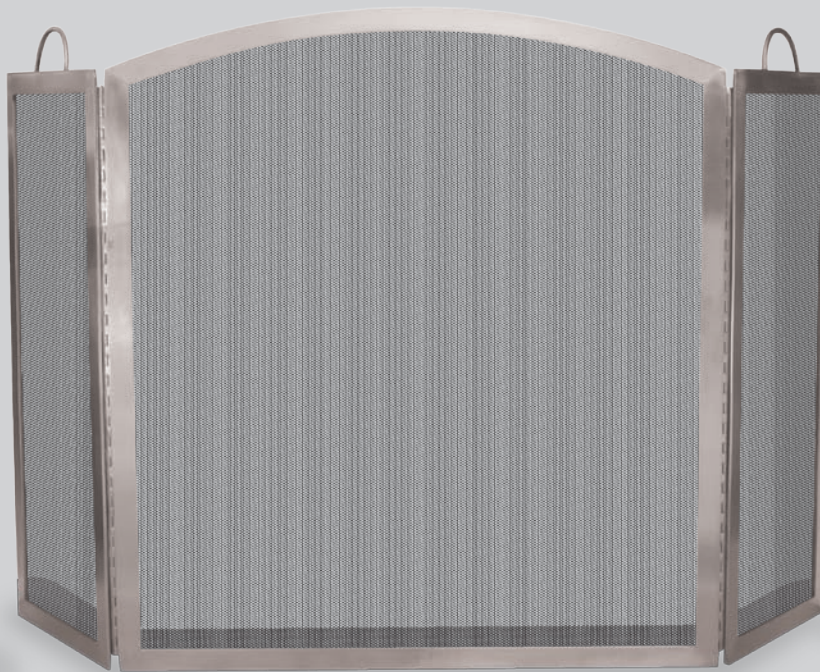


W-1880

- | | | | |
|---------------|---|---------------|---|
| C-1791 | 4 Pounds Fatwood in Poly Bag
12" High (4.1 lbs.) | 261735 | Replacement Black Leather Carrier
17" High x 30" Wide |
| C-1841 | 4 Pounds Fatwood Bundle
6" High (4.1 lbs.) | W-1171 | Black Canvas Carrier – Square with Sides
14" High x 22" Wide |
| C-1571 | 15 Pounds Fatwood in White Carton
10" High (15.5 lbs.) | W-1161 | Replacement Canvas Carrier
15" High x 31.5" Wide |
| C-1710 | 10 Pounds Fatwood in Color Carton
10" High (11 lbs.) | W-1880 | Replacement Brown Suede Leather Carrier
17" High x 30" Wide |
| C-1751 | 8 Pounds Fatwood in Burlap Sack
9" High (8.2 lbs.) | | |



F-7703



S-7700



F-7710

Made of 304 Stainless Steel

- F-7703** 5 Piece Stainless Steel Fireset with Twist Handles
30" High (21.5 lbs.)
- S-7700** 3 Fold Stainless Steel Screen with Handles
32" High x 54" Wide (25.6 lbs.)

- F-7710** 5 Piece Stainless Steel Fireset with Crook Handles
32" High (19.8 lbs.)



AAB602A



AAB603A



AAB607A



AAB606A



AAB606A-AC



AAB605A

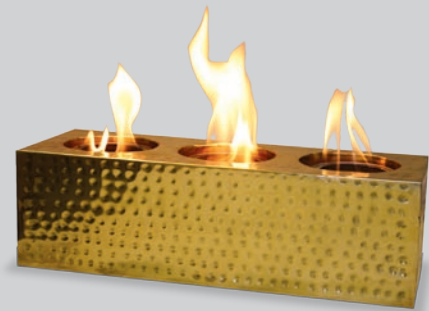
Fuel Sold Separately



AAB606A-RP



263845



AAB604A

- | | |
|---|--|
| <p>AAB602A Steel & Chrome Gel Firebowl
5.5" L x 5.5" W x 12" H (4 lbs.)</p> <p>AAB603A Brushed Nickel Gel Firebowl
5.8" L x 5.8" W x 12.3" H (4 lbs.)</p> <p>AAB607A Hammered Polished Chrome Gel Firebowl
10.5" Dia x 10.5" H (5 lbs.)</p> <p>AAB606A Bronze Gel Firebowl
10" Dia. x 5" H (4 lbs.)</p> <p>AAB606A-AC Antique Copper Gel Firebowl
10" Dia. x 5" H (4 lbs.)</p> | <p>AAB605A Bronze Gel Firebowl
16" Dia. x 7" H (6 lbs.)</p> <p>AAB606A-RP Black Polished River Rocks
(For Use With AAB605A, AAB606A and AAB606A-AC)
(2.2 lbs.)</p> <p>263845 24 Pack Alcohol Fuel (22 lbs.)</p> <p>AAB604A Polished Brass Hammered Gel Firebowl
16" L x 5.8" W x 4.8" H (5 lbs.)</p> |
|---|--|



153100	9	EWTR890SP	3
200209	10	EWTS830SP	4
203445	26	EWU710SP	7
233000	11	EWUR730SP	5
233010	11	EWUR810SP	6
235000	12	EWUR840SP	6
251941	12	F-7703	28
251958	12	F-7710	28
261735	27	GAD860SP	19
263845	29	GTL7179SP	20
269922	12	GWT501A	9
284826	20	GWU501E	10
284840	20	S-7700	28
62900	8	SV-15	21
92000	8	SV3100	22
AAB602A	29	SV5100	23
AAB603A	29	W-1151	26
AAB604A	29	W-1161	27
AAB605A	29	W-1168	26
AAB606A	29	W-1171	27
AAB606A-AC	29	W-1560	25
AAB606A-RP	29	W-1836	25
AAB607A	29	W-1859	25
C-1541	26	W-1880	27
C-1546	26	W-1881	25
C-1549	26	W-1890	25
C-1571	27	W-7736	25
C-1710	27	WAD506AS	15
C-1751	27	WAD506B	15
C-1791	27	WAD792SP	14
C-1841	27	WAD794SP	16
C-7723	26	WAD796SP	16
C-7727	26	WAD820SP	13
C-7730	26	WAD840SP	13
CPSX000014	24	WAD850SP	14
CPSX000021	24	WAF501CS	17
EW700SP	7	WAF513C	17
EWTR720SP	5	WAF741SP	18
EWTR800SP	3	WAF830SP	18
EWTR850SP	4	ZAS701A	15



**Blue Rhino Global Sourcing, Inc.
Winston-Salem, North Carolina 27105**

**Phone: 866.758.3900
24-Hour Fax: 336.659.6770
E-Mail: sales@uniflame.com**

www.bluerhino.com

Free Manuals Download Website

<http://myh66.com>

<http://usermanuals.us>

<http://www.somanuals.com>

<http://www.4manuals.cc>

<http://www.manual-lib.com>

<http://www.404manual.com>

<http://www.luxmanual.com>

<http://aubethermostatmanual.com>

Golf course search by state

<http://golfingnear.com>

Email search by domain

<http://emailbydomain.com>

Auto manuals search

<http://auto.somanuals.com>

TV manuals search

<http://tv.somanuals.com>