

**Dryer**

**DC 7110**

**BEKO**

## Read this manual prior to initial operation of the product!

Dear Customer,

We hope that your product, which has been manufactured in modern facilities and passed through a strict quality control procedure, will give you very good results.

We advise you to read through this manual carefully before using your product and keep it for future reference.







### This User Manual will

- Help you use your machine in a fast and safe way.
- Read the User Manual before installing and starting your product.
- In particular, follow the instructions related to safety.
- Keep this User Manual within easy reach for future reference.
- Please read all additional documents supplied with your product.

Remember that this User Manual is also applicable for several other models.

### Explanation of symbols

Throughout this User Manual the following symbols are used:

-  Important safety information. Warning for hazardous situations with regard to life and property.
-  Caution; Warning for supply voltage.
-  Caution; Warning for fire hazard.
-  Caution; Warning for hot surfaces.
-  Read the instructions.
-  Useful information. Important information or useful hints about usage.



This appliance's packaging material is recyclable. Help recycle it and protect the environment by dropping it off in the municipal receptacles provided for this purpose. Your appliance also contains a great amount of recyclable material. It is marked with this label to indicate the used appliances that should not be mixed with other waste. This way, the appliance recycling organised by your manufacturer will be done under the best possible conditions, in compliance with European Directive 2002/96/EC on Waste Electrical and Electronic Equipment. Contact your town hall or your retailer for the used appliance collection points closest to your home. We thank you doing your part to protect the environment.

# 1 Important safety information

This section includes safety information that will help protection from risks of personal injuries or materialistic damages. Failure to follow these instructions shall cause any warranty and reliability commitment to become void.

## General safety

- Never place the machine on a carpet-covered floor, otherwise, lack of airflow beneath the machine may cause electrical parts to overheat. This will cause problems with your machine.
- If the power cable or mains plug is damaged, you must call Authorised Service Agent for repair.
- The product should not be plugged in during installation, maintenance and repair works. Such works should always be made by the technical service. Manufacturer shall not be held responsible for damages arising from processes carried out by unauthorised persons.
- Connect the product to a grounded outlet protected by a fuse of suitable capacity as stated in the technical specifications table.
- Operate your product at temperatures between +5°C and +35°C.
- Do not use electrical devices in the product.
- Do not connect the air exit of the product to the chimney holes which are used for the exhaust fumes of the devices operating with gas or other types of fuel.
- You must provide enough ventilation in order to prevent gases exiting from devices operating with other types of fuels including the naked flame from accumulating in the room due to the back fire effect.
- Always clean the lint filter before or after each loading.
- Never operate your dryer without the lint filter installed.
- Do not allow fibre, dust and dirt accumulation around the exhaust exit and at adjacent areas.
- Power cable plug must be within easy reach after installation.
- Do not use extension cords, multi-plugs or adaptors to connect the dryer to power supply in order to decrease the risk of electric shock.
- Do not make any changes on the plug supplied with the product. If it is not compatible with the socket, have a qualified electrician change the socket with a suitable one.
- Items cleaned or washed with gasoil/fuel oil, dry-laundry solvents and other combustible or explosive materials as well as the items

that are contaminated or spotted with such materials should not be dried in the product since they emit flammable or explosive vapor.

- Do not dry items cleaned with industrial chemicals in the dryer.
- Do not dry unwashed items in the dryer.
- Items soiled with cooking oils, acetone, alcohol, fuel oil, kerosene, stain remover, turpentine, paraffin and paraffin removers must be washed in hot water with plenty of detergent before being dried in the dryer.
- Garments or pillows bolstered with rubber foam (latex foam), shower bonnets, water resistant textiles, materials with rubber reinforcement and rubber foam pads should not be dried in the dryer.
- Do not use fabric softeners and anti-static products unless they are recommended by the manufacturers of the fabric softener or the product.
- This product must be grounded. Grounding installation decreases the risk of electric shock by opening a path with low resistance for the electricity flow in case of a malfunction or failure. Power cable of this product is equipped with a conductor and a grounding plug that allows for grounding the product. This plug must be installed appropriately and inserted into a socket which is grounded in accordance with the local laws and regulations.
- Do not install the product behind a door with a lock, sliding door or a door that has a hinge against the hinge of the dryer.
- Do not install or leave this product in places where it will be exposed to outdoor conditions.
- Do not tamper with the controls.
- Do not perform any repair or part replacing procedures on the product even if you know or have the ability to perform unless it is clearly suggested in the operating instructions or the published service manual.
- Inside and exhaust duct of the product must be cleaned by the qualified service personnel periodically.
- Wrong connection of grounding conductor of the product can cause electric shock. If you have any suspect about the grounding connection, have it checked by a qualified electrician, service representative or service personnel.
- Do not reach into the machine when the drum is spinning.
- Unplug the machine when it is not in use.
- Never wash down the appliance with water! There is the risk of electric shock! Always

disconnect by unplugging from the mains before cleaning.

- Never touch the plug with wet hands. Never unplug by pulling on the cable, always pull out by grabbing the plug only. Do not operate the machine if the power cable or plug is damaged!
- Never attempt to repair the machine yourself, otherwise, you will be putting your life and others' lives in danger.
- For malfunctions that cannot be solved by following the information given in the safety instructions:  
Turn off the machine, turn off and contact an authorised service agent.
- Do not stop the dryer before the drying cycle comes to an end unless you will remove all laundry from the dryer fast in order to lay them and dissipate the heat.
- Remove the door of the drying compartment before decommissioning or disposing of the product.
- The final step of the drying cycle (cool-down cycle) occurs without applying heat to ensure that the items are left at a temperature that will not damage them.
- Fabric softeners or similar products should be used as specified by the fabric softener instructions.
- Underwear that contains metal reinforcements should not be placed in a dryer. Damage to the dryer can result if metal reinforcements come loose during drying.
- Check all garments for forgotten lighters, coins, metal pieces, needles, etc. before loading.
- At times when your dryer is not in use or after the laundry is taken out following the completion of drying process, turn off by using the On/Off button. In cases when the On/Off button is on (while the dryer is energized), keep the door of the dryer closed.

### **Intended use**

- This product has been designed for domestic use. It should not be used for other purposes.
- Use the product only for drying laundry that are marked accordingly.
- Dry only those articles in your product that are stated in this manual.
- This product is not intended to be used by persons with physical, sensory or mental disorders or unlearned or inexperienced people (including children) unless they are attended by a person who will be responsible for their safety or who will instruct them accordingly for use of the product.

### **Children's safety**

- Electrical appliances are dangerous for the children. Keep children away from the machine when it is operating. Do not let them tamper with the machine.
- Packaging materials are dangerous to children. Keep the packaging materials out of reach of children or dispose them by classifying according to waste directives.
- Do not allow children sit/climb on or enter in the product.
- Children should be supervised to ensure that they do not play with the product.
- Close the loading door when you leave the area where the product is located.

## 2 Installation

Refer to the nearest Authorised Service Agent for installation of your product.

**i** Preparation of location and electrical installation for the product is under customer's responsibility.

**⚠** Installation and electrical connections must be carried out by a qualified personnel.

**⚠** Prior to installation, visually check if the product has any defects on it. If so, do not have it installed. Damaged products will cause risks for your safety.

### Appropriate installation location

- Install the product in an environment which has no risk of freezing and is in a stable and level position.
- Operate your product in a well ventilated, dust-free environment.
- Do not block the air ducts in front of and under the product with materials such as long pile rugs and wooden bands.
- Do not place your product on a long pile rug or on similar surfaces.
- Do not install the product behind a door with a lock, sliding door or a hinged door which can strike the product.
- Once the product is installed, it should stay at the same place where its connections have been made. When installing the product, make sure that the rear wall of it does not touch anywhere (tap, socket, etc.) and also pay attention to install the product at a place where it will stay permanently.

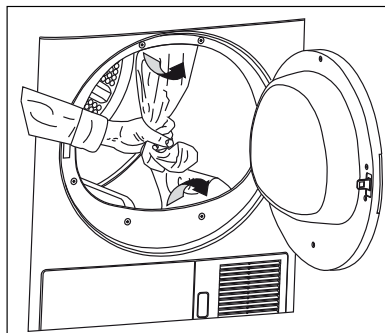
**⚠** Do not place the product on top of the power cable.

- Keep at least 1.5 cm distance to walls of other furniture.

### Removing the transportation safety assembly

**⚠** Remove the transportation safety assembly before using the product for the first time.

1. Open the loading door.
2. There is a nylon bag inside the drum that contains a piece of styrofoam. Hold it from its section marked with XX.
3. Pull the nylon towards yourself and remove the transportation safety assembly.



**⚠** Make sure that you have removed the transportation safety assembly (nylon+styrofoam pieces) before using the product for the first time. Do not leave any items inside the drum.

### Under counter installation

- A special part (Part no. 297 360 0100) replacing the top trim must be provided and installed by the Authorised Service Agent in order to use the machine under a counter or in a cupboard. It should never be operated without the top trim.
- Leave at least 3 cm of space between the side and rear walls of the product and the walls of the counter/cupboard when installing your product under a counter or in a cupboard.

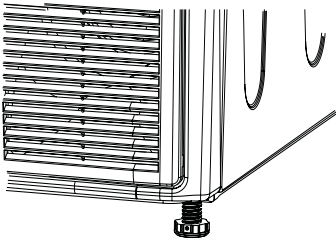
### Mounting over a washing machine

- A fitting device should be used between the two machines when installing above a washing machine. The bracket (Part no. 297 720 0200 white/297 720 0500 grey) must be installed by the Authorised Service Agent.
- Place the product on a firm floor. If it will be placed on top of a washing machine, the approximate weight of both machines may reach 180 kg when they are full. Therefore, the floor must be capable of carrying the load on it!

### Adjusting the feet

In order to ensure that your machine operates more silently and vibration-free, it must stand level and balanced on its feet. Balance the machine by adjusting the feet.

Rotate the feet to adjust until the machine stands level and firmly.



**i** Never unscrew the adjustable feet from their housings.

## Electrical connection

Connect the machine to a grounded outlet protected by a fuse of suitable capacity as stated in the technical specifications table. Our company shall not be liable for any damages that will arise when the machine is used on a circuit without grounding.

- Connection must comply with national regulations.
- If the current value of the fuse or breaker in the house is less than 13 Amps, have a qualified electrician install a 13 Amp fuse.
- Power cable plug must be within easy reach after installation.
- The voltage and allowed fuse or breaker protection are specified in the “Technical Specifications” section.
- The specified voltage must be equal to your mains voltage.
- Do not make connections via extension cables or multi-plugs.
- The main fuse and switches must have a contact distance of minimum 3 mm.

**⚠** Damaged power cable must only be replaced by a qualified electrician.

**⚠** If the product is faulty, it must not be operated unless it is repaired! There is the risk of electric shock!

## First use

- To have the product ready for operation before calling the authorised service agent, make sure that its location and power supply installations are appropriate. If they are not, call a qualified electrician to have any necessary arrangements carried out.
- Make sure that the power connections of the product are in accordance with the instructions given in relevant chapters of this manual.

## Disposing of packaging material

Packaging materials are dangerous to children. Keep packaging materials in a safe place out of reach of children. Packaging materials of your product are manufactured from recyclable materials. Sort and dispose of them in

accordance with recycled waste instructions. Do not dispose of them with normal domestic waste.

## Transportation of the machine

1. Unplug the machine from the mains.
2. Remove the water drain (if any) and chimney connections.
3. Drain water remained in the machine completely before transportation.

## Disposing of the old machine

Dispose of your old machine in an environmentally friendly manner.

Refer to your local dealer or solid waste collection centre in your area to learn how to dispose of your machine.

Before disposing of your old machine, cut off the power cable plug and make the loading door lock unusable to avoid dangerous conditions to children.

# Technical Specification

EN

Height (adjustable)	84.6 cm
Width	59.5 cm
Depth	53 cm
Capacity (max.)	7 kg
Weight (net)	35 kg
Voltage	See type label
Rated power input	
Model code	

Type label is located behind the loading door.

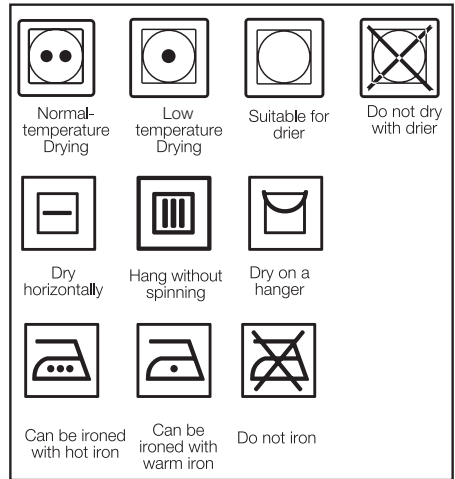
### 3 Initial preparations for drying

#### Things to be done for energy saving:

- Make sure that you operate the product at its full capacity but pay attention to not exceeding it.
- Spin your laundry at the highest speed possible when washing them. Thus, the drying time is shortened and energy consumption is decreased.
- Pay attention to dry same types of laundry together.
- Follow the instructions in the user manual for programme selection.
- Make sure that sufficient clearance is provided at the front and rear side of the dryer for air circulation. Do not block the grill at the front side of the product.
- Do not open the door of the machine during drying unless necessary. If you must certainly open the door, pay attention not to keep it open for a long time.
- Do not add new (wet) laundry during drying.
- Lint and fibres released from the laundry to the air during the drying cycle are collected in the "Lint Filter". Make sure that you clean the filters before or after each drying.
- In models with condenser, make sure that you clean the condenser regularly at least once every month or after every 30 drying cycles.
- In vented models, follow the chimney connection rules in the user manual and pay attention to the chimney cleaning.
- Ventilate the room, where the dryer is located, well during drying.
- For power saving in models with lamps, at times when your dryer is not in use, keep the door closed if the On/Off button is pressed (if the dryer is energized).

#### Laundry suitable for drying in the machine

**i** Always follow the suggestions on the laundry labels. Dry only the laundry having a label stating that they are suitable for drying in a dryer and make sure that you select the appropriate programme.



#### Laundry unsuitable for drying in the machine

- Laundry items with metal attachments such as belt buckles and metal buttons can damage your dryer.
- Do not dry items such as woollens, silk garments and nylon stockings, delicate embroidered fabrics, laundry with metal accessories and items such as sleeping bags in the dryer.
- Laundry made of delicate and valuable fabrics as well as lace curtains can be created. Do not dry them in the dryer!
- Do not dry items made of hermetic fibres such as pillows and quilts in the dryer.
- Laundry made of foam or rubber will be deformed.
- Do not dry laundry containing rubber in the dryer.
- Do not dry laundry exposed to petroleum, oil, combustible or explosive agents in the dryer even if they are washed beforehand.
- Overly wet laundry or laundry with dripping water must not be put into the dryer.
- Items cleaned or washed with gasoil/fuel oil, dry-laundry solvents and other combustible or explosive materials as well as the items that are contaminated or spotted with such materials should not be dried in the product since they emit flammable or explosive vapor.
- Do not dry items cleaned with industrial chemicals in the dryer.
- Do not dry your unwashed laundry in the dryer.
- Items soiled with cooking oils, acetone, alcohol, fuel oil, kerosene, stain remover,



turpentine, paraffin and paraffin removers must be washed in hot water with plenty of detergent before being dried in the dryer.

- Garments or pillows bolstered with rubber foam (latex foam), shower bonnets, water resistant textiles, materials with rubber reinforcement and rubber foam pads should not be dried in the dryer.
- Do not use fabric softeners and anti-static products unless they are recommended by the manufacturers of the fabric softener or the product.
- Do not dry the underwear reinforced with metal parts in the dryer. If these metal reinforcements loosen and break during drying, they will damage your dryer.

### Preparing laundry for drying

- Check all laundry items before loading them into the product to make sure that there are no lighters, coins, metal items, needles and etc. in their pockets or on any part of them.
- Fabric softeners and similar products must be used in accordance with the instructions of the manufacturer of the relevant products.
- All laundry must be spun at the highest spin speed that your washing machine allows for the laundry type.
- Laundry may be tangled after washing. Separate your laundry before placing them into your dryer.
- Sort your laundry according to their types and thicknesses. Dry the same type of laundry together. E.g.: fine kitchen towels and table cloths dry faster than the thick bath towels.

### Correct load capacity



**!** Consider the information in the "Programme Selection Table". Always start the programme in accordance with the maximum load capacity.

**i** Adding laundry to the machine more than the level shown in the figure is not recommended. Drying performance will

degrade when the machine is overloaded. Furthermore, your dryer and your laundry can be damaged.

- i** Place your laundry into the drum loosely so that they will not get tangled.
- i** Large pieces (E.g.: bed sheets, quilt covers, large tablecloths) may bunch-up. Stop the dryer 1-2 times during drying process to separate bunched-up laundry.

Following weights are given as examples.

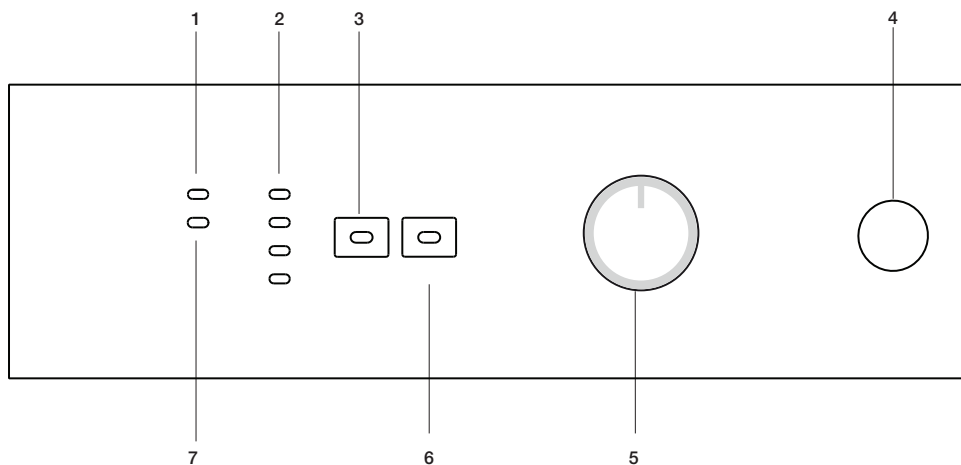
Home articles	Approximate weights (g)
Cotton quit covers (double)	1500
Cotton quit covers (single)	1000
Bed sheets (double)	500
Bed sheets (single)	350
Large tablecloths	700
Small tablecloths	250
Tea napkins	100
Bath towels	700
Hand towels	350
Garments	Approximate weights (g)
Blouses	150
Cotton shirts	300
Shirts	200
Cotton dresses	500
Dresses	350
Jeans	700
Handkerchiefs (10 pieces)	100
T-Shirts	125

### Loading the laundry

- Open the loading door.
- Place laundry items loosely into the dryer.
- Push the loading door to close. Ensure that no items are caught in the door.

## 4 Selecting a Programme and Operating Your Machine

### Control panel



#### 1. Filter cleaning warning light

Warning light turns on when the filter is full.

#### 2. Program follow-up indicator

Used to follow-up the progress of the current programme.

#### 3. Low temperature

Used to dry in low temperatures.

#### 4. On/Off button

Used to turn on and off the machine.

#### 5. Programme selection knob

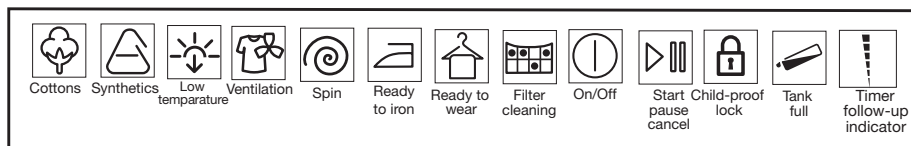
Used to select a programme.

#### 6. Start/Pause/Cancel button

Used to start, pause or cancel the programme.

#### 7. Water tank warning light

Warning light turns on when the water tank is full.



## Preparing the machine

1. Plug in your machine.
  2. Place the laundry in the machine.
  3. Press the "On/Off" button.
- i** Pressing the "On/Off" button does not necessarily mean that the programme has started. Press "Start/Pause/Cancel" button of the machine to start the programme.

## Timer program selection

Decide the appropriate time from the table below which includes drying temperature in degrees. Select the desired time with the timer program selection button.

Extra dry	Dry at high temperature only for cotton laundry. Thick and multi layered laundry (E.g.: towels, linens, jeans) are dried in a way that they do not require ironing before placing in the wardrobe.
Ready to wear	Normal laundry (E.g.: tablecloths, underwear) are dried in a way that they do not require ironing before placing in the drawers.
Iron Dry	Normal laundry (E.g., Shirts, dresses) are dried ready to be ironed.

**i** For further program details, see, "Program Selection Table"

## Main programmes

### Anti-creasing

A 2-hour anti creasing programme to prevent laundry from creasing will be activated if you do not take the laundry out after the programme is over. This programme rotates the laundry in 600-second intervals to prevent creasing.

### •Ventilation




Only ventilation is performed for 10 minutes without blowing hot air. You can air your clothes that have been kept at closed environments for a long time thanks to this program to deodorize unpleasant odors.

### •Timer programs

You can select one of the 20 min...105 min...135 min... timer programs to achieve the final drying level. Dry the cotton laundry at high temperatures and synthetic and easy-care laundry at low temperatures depending on the type of the laundry.

**i** You must press the "Low temperature" button for synthetics

## Program selection and consumption table

EN				
Program table				
Programs	Capacity (kg)	Spin speed in washing machine (rpm)	Approximate amount of remaining humidity	Drying time (minutes)
Cottons / Coloreds				
 Ready to Wear	7	1000	% 60	135
		800	% 70	150
	3.5	1000	% 60	90
		800	% 70	105
 Ready to Iron	7	1000	% 60	105
		800	% 70	120
	3.5	1000	% 60	60
		800	% 70	60-90
Synthetics				
 Ready to Wear	3.5	800	% 40	60
		600	% 50	90
Energy consumption values				
Programs	Capacity (kg)	Spin speed in washing machine (rpm)	Approximate amount of remaining humidity	Energy consumption value kWh
Cottons linen Ready to wear*	7	1000	% 60	4.48
Cottons Ready to iron	7	1000	% 60	3.40
Synthetics Ready to wear	3.5	800	% 40	1.60

\* : Energy Label standard program (EN 61121:2005)

All values given in the table have been fixed according to EN 61121:2005 Standard. These values may deviate from the table according to the laundry type, laundry spin speed, environmental conditions and voltage fluctuations.

## Auxiliary function

### Low temperature

This function allows for drying at lower temperatures and therefore saves energy. Warning LED will light up when you select the function.

**i** You must use this function when you dry your synthetic or delicate laundry.

### Warning indicators

**i** Warning indicators may differ according to the model of your dryer.

### Filter cleaning

A warning light will turn on to remind filter cleaning after the programme finishes.

**i** If the filter cleaning warning light lights up continuously, please refer to, "Suggested solutions for problems".

### Water tank

**△** Warning LED will light up at the end of the program or when the tank is full with water. The machine stops operating when this warning LED lights up during a program running. To restart the machine, please drain the water in the water tank. Press "Start/Pause/Cancel" button to start the program after you have emptied the water tank. The warning LED goes off and the program resumes operating.

### Starting the programme

1. Press "Start/Pause/Cancel" button to start the programme.
2. Light of the "Start/Pause/Cancel" button will turn on to indicate that the programme has started.

### Timer follow-up indicator

One of the LEDs is on as far as program runs and shows the approximate remaining time.

### Changing the program after the program has started

You can use this feature to dry your laundry in a different program after your machine has started to run.

For example;

Press and hold the "Start/Pause/Cancel" button for about 3 seconds to select "90" minutes program instead of "60" minutes program. Select the "90" minutes program by rotating the program knob.

Press "Start/Pause/Cancel" button to start the program.

**i** The program which is selected first will go on even if the program selection button is moved and another program mode is selected while the machine is operating. You must cancel the ongoing program in order to change the drying program. (See, Ending the program through canceling)

## Adding/removing laundry in standby mode

In order to add or take out laundry after the start-up of the program;

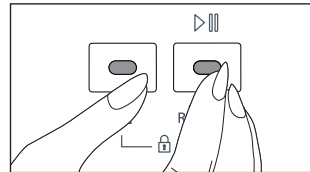
1. Press the "Start/Pause/Cancel" button to switch the machine to "Pause" mode. Drying process will stop.
2. Open the door at Pause position and close it again after adding or taking out laundry.
3. Press "Start/Pause/Cancel" button to start the program.

**i** Any laundry added after the drying process was started may cause the already dried clothes in the machine intermingle with wet clothes and the result will be wet laundry after the drying process is over.

### Child-proof lock

There is a childproof lock to prevent any program interruption due to the pressing of keys while the program is on. The loading door and all keys except the "On/Off" key on the panel are deactivated when the child-proof lock is active. In order to activate the childproof lock, press on the "Start/Pause/Cancel" and "Low temperature" buttons simultaneously for 3 seconds.

To start a new program after the program is over or to interrupt the program, the childproof lock should be deactivated. To deactivate the childproof lock, press the same buttons for 3 sec.



**i** One of the LEDs on the program follow-up indicator starts flashing when the child-proof lock is activated.

**i** Child-proof lock is deactivated when the machine is restarted by pressing the On/Off button.


### Ending the program through canceling

The program which is selected first will keep on going even if the position of the program selection button is changed. A new program can be selected and started after "Program cancel" is activated in order to change the drying program.

To cancel any selected program;

- Press "Start/Pause/Cancel" button for about a duration of 3 seconds. The "Filter cleaning" and "Water tank" warning LEDs as well as the

“0” warning LED on the program follow-up indicator will light up at the end of this period for reminding purposes.


 As the inside of the machine will be excessively hot when you cancel the program while the machine is running, activate the ventilation program to cool it down.


The machine will not start even if the “Start/Pause/Cancel” button is pressed, unless the program selection knob is returned to the initial program. The paused program must be cancelled in order to change the drying program.

### **End of program**

The “Filter cleaning” and “Water tank” warning LEDs as well as the “0” warning LED on the program follow-up indicator will light up at the end of the program. The door can be opened and the machine becomes ready for a second cycle.

Press the “On/Off” button to shut down the machine.

 A 2-hour anti creasing program to prevent laundry from creasing will be activated if you do not take the laundry out after the program has come to an end.

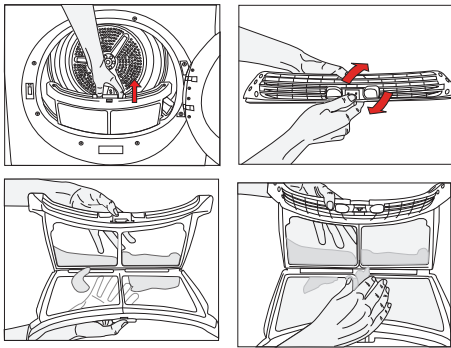
 Clean the filter after each drying (please see, Filter cleaning).

 Drain the water tank after each drying (please see, Water tank)

## 5 Maintenance and cleaning

### Filter Cartridge / Door Inner Surface

Lint and fibres released from the laundry to the air during the drying cycle are collected in the "Filter Cartridge".



- i** Such fibre and lint are generally formed during wearing and washing.
- i** Always clean the filter and the inner surfaces of the cover after each drying process.
- i** You can clean the filter and filter area by vacuum cleaner.

To clean the filter:

1. Open the loading door.
2. Remove the cover filter by pulling it up and open the filter.
3. Clean lint, fibre, and cotton raveling by hand or with a soft piece of cloth.
4. Close the filter and place it back into its seat.

- i** Clogging may arise on the filter surface after using your machine for some time; if this occurs, wash the filter with water and dry it before using again.
- i** Clean the entire inner surface of the cover and door gasket.

### Water tank;

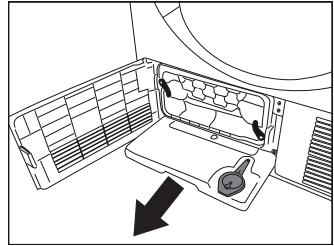
The moisture in the damp laundry is taken from the laundry and condensed. Drain the water tank after each drying cycle or during drying when "Water tank" warning light turns on.

- ⚠** Condensed water is not drinkable!
- ⚠** Never take out the water tank when the programme is running!

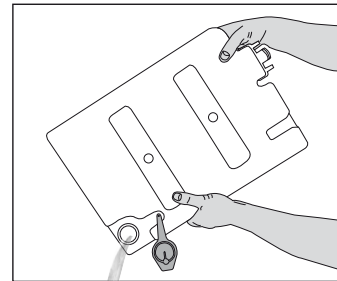
If you forget to drain the water tank, your dryer will stop during the following drying cycles when the water tank is full and the "Water tank" warning light will turn on. If this is the case, press the "Start/Pause/Cancel" button to resume the drying cycle after draining the water tank.

\*To drain the water tank:

- 1-Carefully remove the water tank by opening the kick plate cover/pulling the drawer.



- 2-Drain the water in the tank



- 3-If there is lint accumulation in the funnel of the water tank, clean it under running water.
- 4-Place the water tank into its seat.

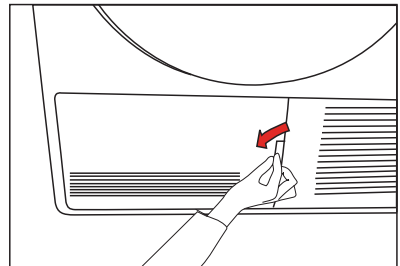
### For the condenser;

Hot and humid air in the condenser is cooled with the cold air from the room. Thus, the humid air circulating in your dryer is condensed and then pumped into the tank.

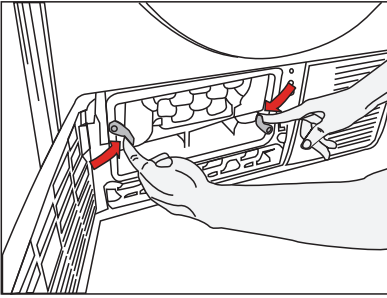
- i** Clean the condenser after every 30 drying cycles or once a month.

To clean the condenser:

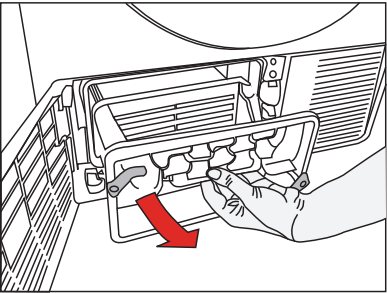
1. If a drying process has been carried out, open the door of the machine and wait until it cools down.



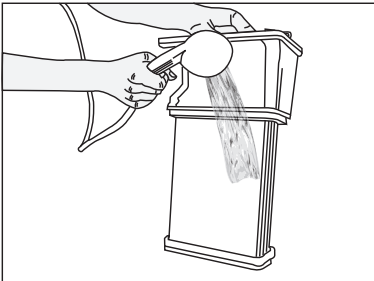
2. Unlock the 2 condenser locks after opening the kick plate.



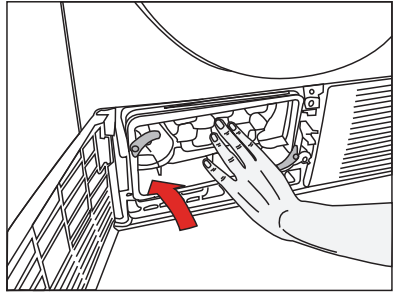
3. Pull out the condenser.



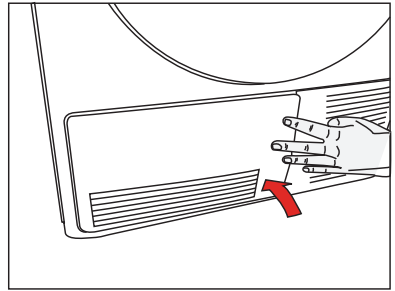
4. Clean the condenser by applying pressurized water with a shower armature and wait until the water drains.



5. Place the condenser in its housing. Fasten the 2 locks and make sure that they are seated securely.



6. Close the kick plate cover.





## 6 Suggested solutions for problems

Drying process takes too much time

- Meshes of the filter may be clogged. Wash with water

Laundry comes out wet at the end of drying.

- Meshes of the filter may be clogged. Wash with water.
- Excessive laundry might have been loaded in. Do not load the dryer in excess.

Dryer does not switch on or the programme does not start. Dryer is not activated when set.

- It might have not been plugged in. Make sure that the machine is plugged in.
- The loading door may be ajar. Make sure that the loading door is properly closed.
- Programme might have not been set or the «Start/Pause/Cancel» button might have not been pressed. Make sure that the programme has been set and it is not in "Pause" mode.
- «Childproof lock» might have been activated. Deactivate the childproof lock.

Programme has been interrupted without any cause.

- The loading door may be ajar. Make sure that the loading door is properly closed.
- Electricity may be cut off. Press «Start/Pause/Cancel» button to start the programme.
- Water may be full. Drain the water in the tank.

Laundry has shrunk, become felted or deteriorated.

- A programme suitable for the laundry type might have not been used. Dry only the laundry which is suitable for drying in dryer after checking the labels on your clothes.
- Select a programme with suitable low temperature for the laundry type to dry your clothes.

Drum lightning does not come on. (For models with lamp)

- Dryer might have not been started by using the «On/Off» button. Make sure that the dryer is on.
- Bulb may have blown. Call the authorized service to replace the bulb.

"0" LED flashes.

- The 2-hour anti creasing programme to prevent laundry from creasing might have been activated. Turn off the dryer and take out the laundry.

"0" LED is on.

- Programme has come to an end. Turn off the dryer and take out the laundry.

"Filter cleaning" LED is on.

- Filter might have not been cleaned. Clean the cover filter.

"Water comes out the cover"

- Clean the entire inner surface of the cover and door gasket.

"Cover opens spontaneously."

- Push it until you hear that it is closed.

For products with a condenser:

"Water tank" warning LED is on.

- Water may be full. Drain the water in the tank.

"Condenser cleaning" LED is on.

- Condenser might have not been cleaned. Clean the filters in the condenser under the kick plate.

 Call an authorized service if the problem persists.







## Free Manuals Download Website

<http://myh66.com>

<http://usermanuals.us>

<http://www.somanuals.com>

<http://www.4manuals.cc>

<http://www.manual-lib.com>

<http://www.404manual.com>

<http://www.luxmanual.com>

<http://aubethermostatmanual.com>

Golf course search by state

<http://golfingnear.com>

Email search by domain

<http://emailbydomain.com>

Auto manuals search

<http://auto.somanuals.com>

TV manuals search

<http://tv.somanuals.com>