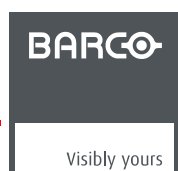


iCon H250 / iCon H400 / iCon H500

Installation manual

R9010510
R9010500
R9010501

R59770070/02
13/06/2007



Barco nv Presentations
Noordlaan 5, 8520 Kuurne
Phone: +32 56.36.82.11
Fax: +32 56.35.86.51
E-mail: presentations.bid@barco.com
Visit us at the web: www.barco.com

Printed in Belgium

TABLE OF CONTENTS

1. Hard disk recovery kit	3
1.1 Introduction	3
2. Hard disk recovery procedure	5
2.1 iCon server boot configuration	5
2.2 Defining commands	6
2.3 The recovery	7
2.4 iCon H250 / H400 / H500 server setup	10
Index.....	13

1. HARD DISK RECOVERY KIT

Overview

- Introduction

1.1 Introduction

What can be done in case of hard disk failure?

There is a possibility to recover the hard disk. This might eliminate the need to replace it in case of a hard disk failure.

The recovery can be needed in case of non repairable virus infection, forgotten password, blue screen at start up...

In this procedure we will use the Linux operating system to do the recovery.



WARNING: This tool will remove all data from your hard disk!

Procedure

We first change the BIOS settings in order to make the projector's server boot from the USB DVD reader, using the image file of the firmware.

Then we start the hard disk recovery. At the end of the procedure, we put the BIOS settings back to its original state.

Kit contents

The delivered kit includes the following items:

- **R32998700**: DVD-ROM containing the image file for your projector (hard disk data)
- **R32998600**: CD-ROM containing Linux recovery tool

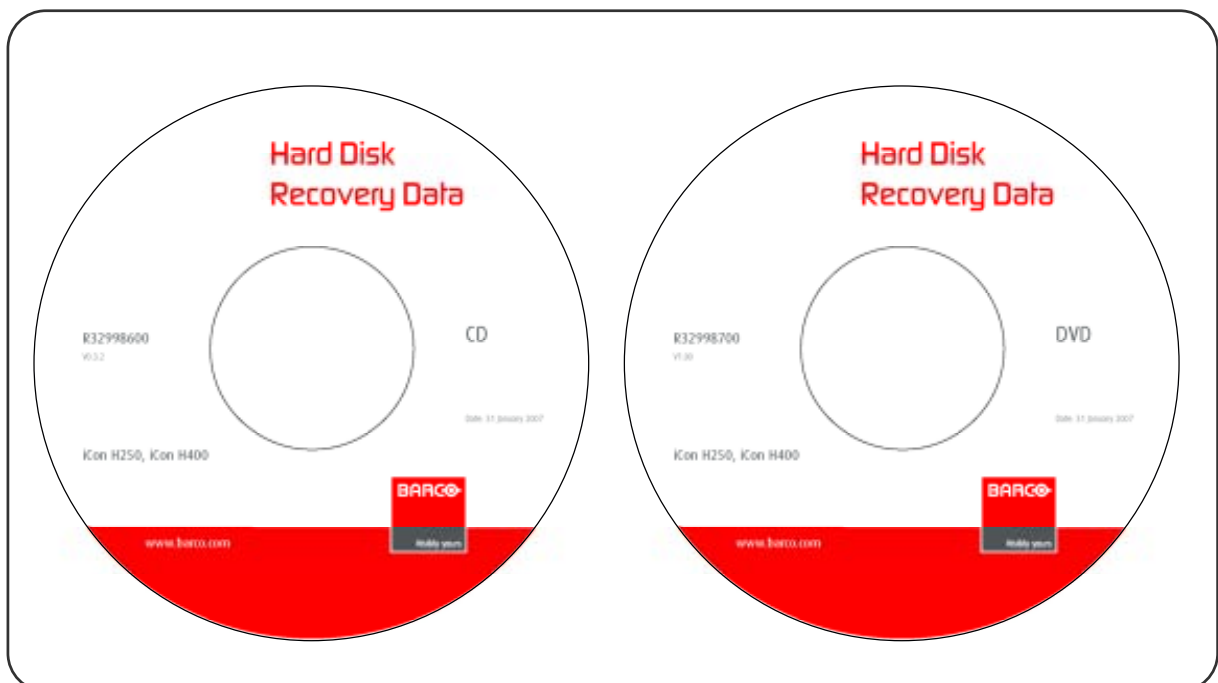


Image 1-1

2. HARD DISK RECOVERY PROCEDURE

Overview

- iCon server boot configuration
- Defining commands
- The recovery
- iCon H250 / H400 / H500 server setup

2.1 iCon server boot configuration

Necessary tools

- DVD-ROM: Hard Disk Recovery Data iCon H250 / iCon H400 / iCon H500
- CD-ROM: Hard Disk Recovery Data iCon H250 / iCon H400 / iCon H500
- USB DVD reader device
- USB keyboard
- Windows® XP product key

How to change the boot configuration?

1. Connect the USB DVD reader device and the USB keyboard to the server of you projector

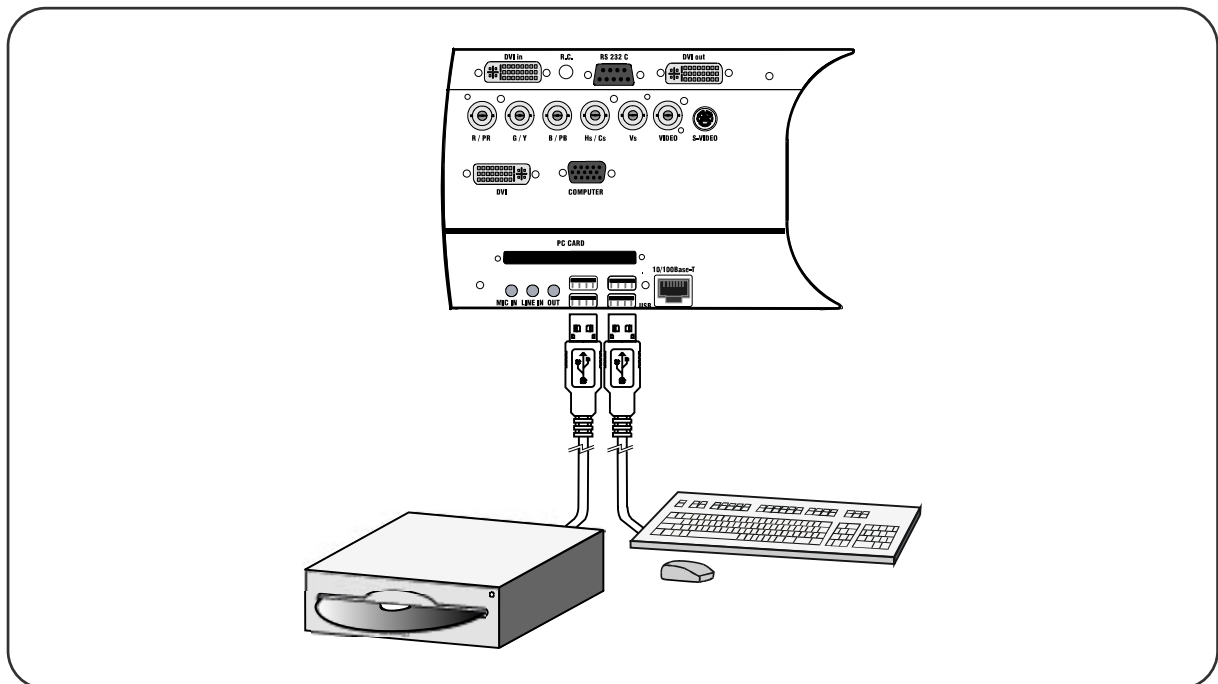


Image 2-1

2. Power up your projector
3. When the server starts (on the first **beep** sound), press **F2** to enter the BIOS
4. Navigate to the tab *Boot*
5. Use the **+** and the **-** key to move the *USB DVD-ROM* to the top of the Boot priority list
Tip: You may have to use the **x** key to move it from the **Excluded from boot order-list** to the **Boot priority order-list!**

2. Hard disk recovery procedure



Image 2-2



Image 2-3

6. Put the CD-ROM **Hard Disk Recovery Data** in the USB DVD reader device
7. Navigate to the tab **Exit**
8. Select **Exit Saving Changes**

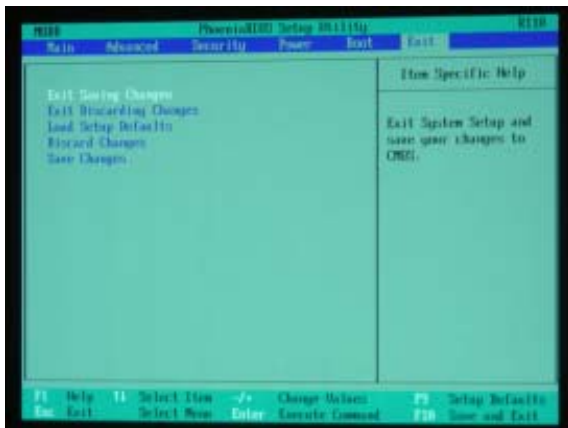


Image 2-4

2.2 Defining commands

How to define the commands?

1. At the boot prompt, type the following text: `fb1024 docache doeject`



Image 2-5

Warning: You only have a limited amount of time to enter this command! If you exceed this time, type `shutdown -r now` and restart the procedure!

Note: The keyboard layout at this moment is **QWERTY**

- After about 5 seconds, the *Load keymap (Enter for default)* : prompt will appear: you have a limited amount of time to change the keyboard configuration. For **AZERTY** you can enter the following figure: 2 (= the figure corresponding to Belgian keyboard configuration).

```

Freeing second kernel memory: done from
The 2.6.18 clocksource has been installed.
>> Loading modules
  !! Scanning for ata1094...ata1094 loaded.
  !! Scanning for ahci...ahci loaded.
  !! Scanning for ata-mirror...ata-mirror loaded.
>> Following steps
>> Loading steps for /usr/src
>> Attempting to mount media: /dev/sda
>> Attempting to mount media: /dev/sda1
>> No suitable media found. Waiting for new devices...
>> Attempting to mount media: /dev/sr0
>> Media found on /dev/sr0
>> Loading keymap
Please select a keymap from the following list by typing in the appropriate
name or number. You should prefer the name to the number (for example
type 'fr' instead of '10'). Hit Enter for the default 'us' keymap.

1 userty  2 be   3 bg   4 brw  5 br-l  6 by   7 cf
8 czech  9 cz   10 de  11 de  12 devarb 13 de  14 et
15 fi   16 fr  17 gr  18 he  19 il   20 in  21 it
22 jp   23 la  24 lt  25 nl  26 nl  27 no  28 pl
29 pt   30 ru  31 ru  32 se  33 sv  34 sk-y 35 sk-u
36 skwme 37 trf  38 trk  39 ua  40 ua  41 ua  42 wangle

<< Load keymap (Enter for default): 2_

```

Image 2-6

- A few seconds later, the USB DVD reader will eject the disc. You see this prompt: `root@sysresccd/root%`

```

root@sysresccd/root%

```

Image 2-7

- Remove the CD-ROM *Hard Disk Recovery Data* from the USB DVD reader

2.3 The recovery

How to do the hard disk recovery?

- Insert the DVD-ROM *Hard Disk Recovery Data* in the USB DVD reader
- At the prompt, enter the following text: `mount -t iso9660 /dev/sr0 /mnt/cdrom`
Tip: Pay attention to the spaces!

2. Hard disk recovery procedure

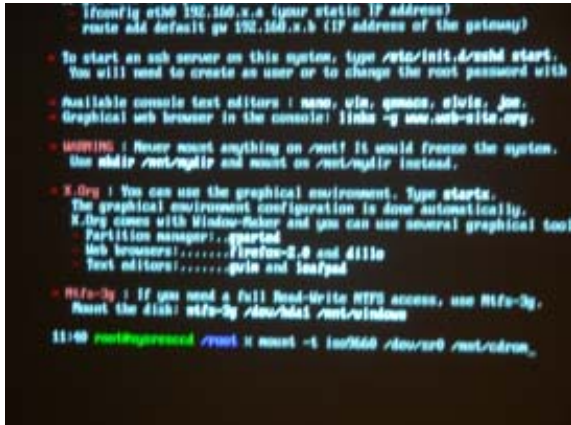


Image 2-8

Note: You will see appear the following message: **mount: block device /dev/sr0 is write-protected, mounting read-only**

3. At the prompt, enter the following text: `partimage`

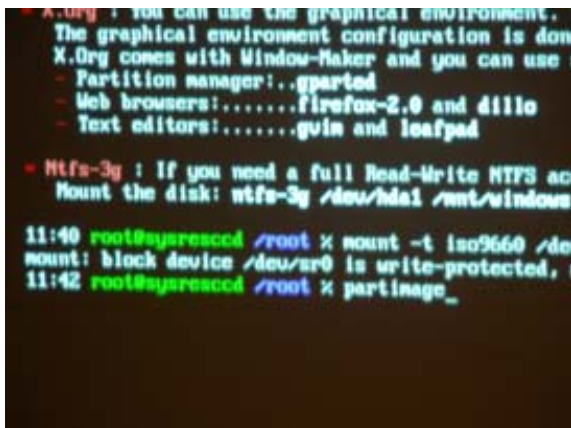


Image 2-9

4. Navigate to the item *Image file to create/use* using the `tab` key and enter the following text: `/mnt/cdrom/iconh400.000`

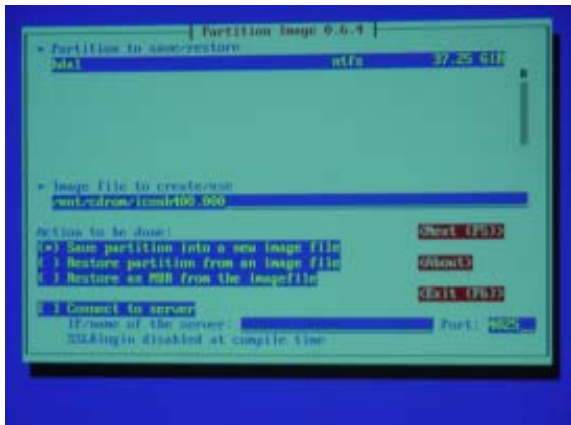


Image 2-10

Note: `iconh400.000` is the name of the file with the firmware and data. It may differ depending on the version and the projector type you are recovering (e.g. `iconh250.000` or `iconh500.000`)!

5. Press `tab`

6. Use `↓` and the `space bar` to select the item *Restore partition from an image file*

7. Press `F5`, verify the partition description and use the `space bar` to close the window

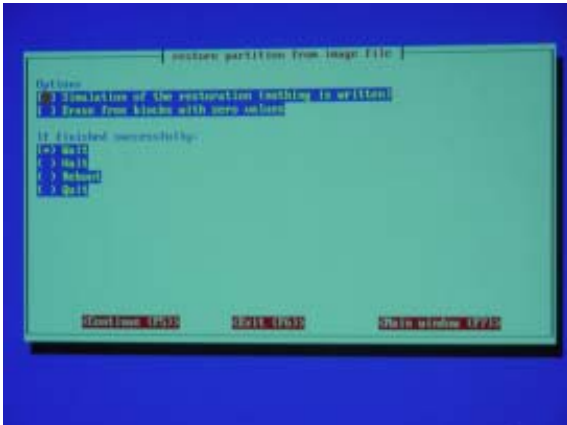


Image 2-11

8. Press **F5** and use the **space bar** to select **OK**. The disk recovery will now start.

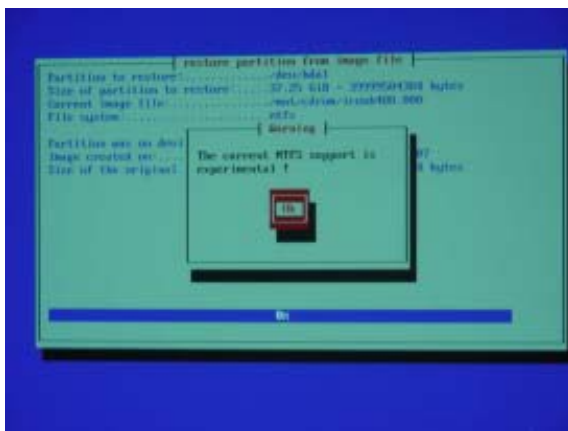


Image 2-12

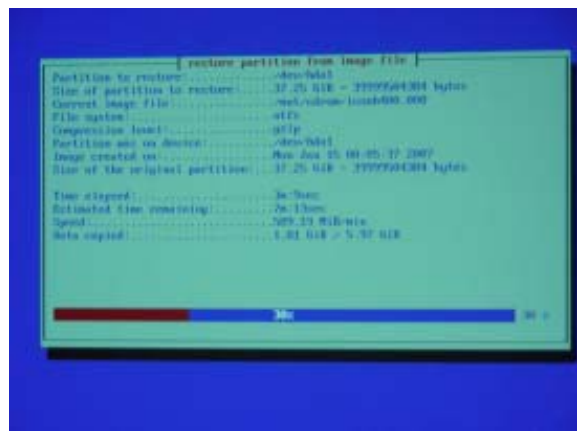


Image 2-13

9. At the end of the recovery, use the **space bar** to select **OK**

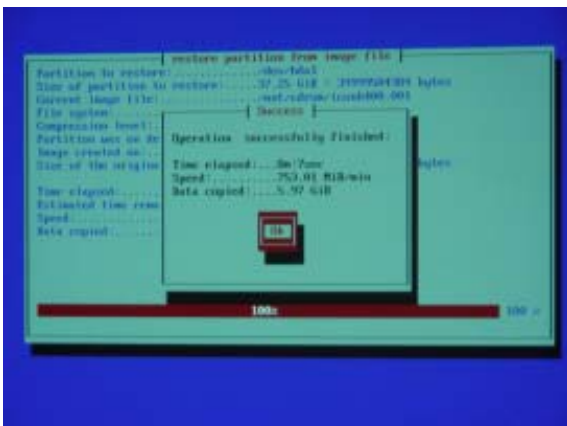


Image 2-14

10. Now enter the following text: `shutdown -r now`

2. Hard disk recovery procedure

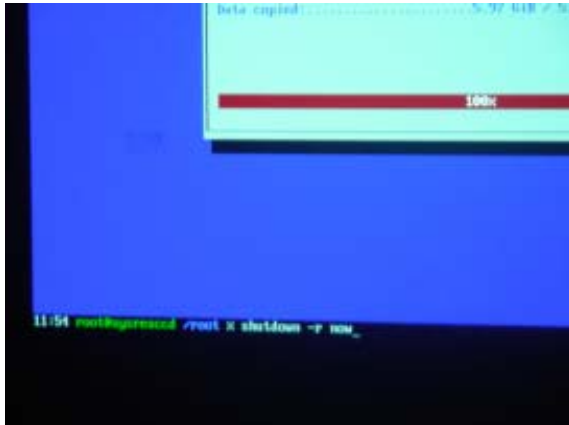


Image 2-15

2.4 iCon H250 / H400 / H500 server setup

Set the boot configuration to its original state

1. When the server restarts (on the first **beep** sound), press **F2** to enter the BIOS
2. Navigate to the tab *Boot*
3. Use the **+** and the **-** key to move the *IDE 0* to the top of the Boot priority list
4. Navigate to the tab *Exit*
5. Select *Exit Saving Changes*: the server will start to reboot

Setup the server again

1. After some minutes, you will be asked to enter the Windows® XP Product Key: enter this key. You can find it on a label on the bottom plate of the projector



Image 2-16

2. Now the Windows® operation system reboots: you will be asked to enter the password. Enter the text: **Barco**
Tip: Check the configuration of your keyboard first (AZERTY or QWERTY)
3. Start the Auto-configuration by selecting *Now*

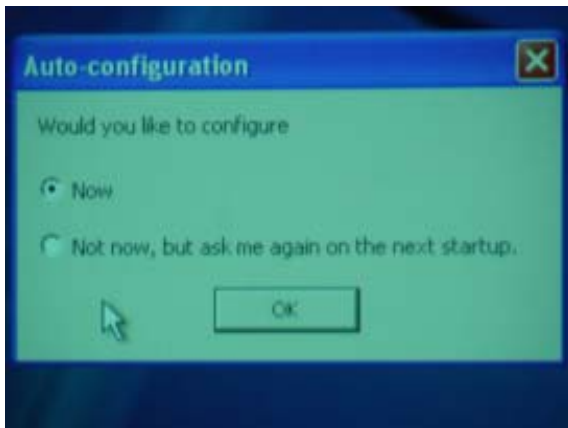


Image 2-17

Note: By choosing *Now*, the resolution will change from 1280x1024 (which can be viewed on a common monitor resolution) to 1920x1080 (HDTV)

4. On the next window, you can choose to start the Barco Desktop Integration by selecting *Yes*. This will enable the *My Sources* and *My Layouts* menu, instead of the standard *My Pictures* and *My Music* menu.
5. The operation system now logs you off: you can log in again and start using the server. The Barco selected wall paper will be visible on the desktop.

INDEX

B

boot configuration 5

D

defining commands 6

H

hard disk 3, 5
 recovery kit 3
 recovery procedure 5

I

introduction 3

R

recovery 7
 recovery kit 3
 recovery procedure 5

S

server setup 10

Free Manuals Download Website

<http://myh66.com>

<http://usermanuals.us>

<http://www.somanuals.com>

<http://www.4manuals.cc>

<http://www.manual-lib.com>

<http://www.404manual.com>

<http://www.luxmanual.com>

<http://aubethermostatmanual.com>

Golf course search by state

<http://golfingnear.com>

Email search by domain

<http://emailbydomain.com>

Auto manuals search

<http://auto.somanuals.com>

TV manuals search

<http://tv.somanuals.com>