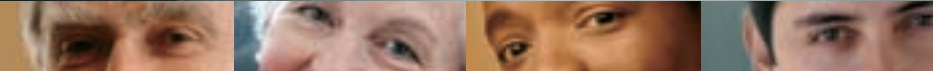




Create your sound.



AUDITION

Download from [Www.Somanuals.com](http://www.Somanuals.com). All Manuals Search And Download.



AS-B1 Bookshelf Speakers



AS-B2 Bookshelf Speakers



FLYING COLORS:

"My speakers are important to me. I didn't want flash. I wanted substance. That's why I cut to the chase. To AUDITION. I couldn't believe the specs and the quality for the price. AUDITION just blew everything else away. When it comes to performing up to my expectations, **these speakers passed my AUDITION with flying colors.**"



TOUGH-TO-BEAT:

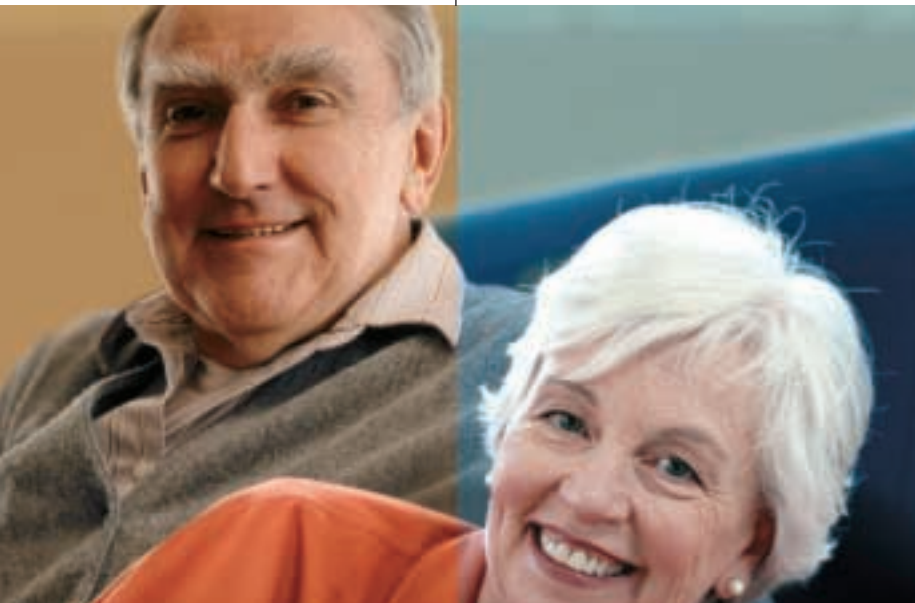
"Hard rock demands a tough-to-beat speaker. So I didn't mess around with any kid's stuff. I went right for AUDITION. A lot of other speakers put their money into the look of the woofer, not the way it works. AUDITION delivers the best quality and performance for this price. And hey, they look awesome too. **That's tough-to-beat.**"



AS-F1 Floorstanding Speakers



AS-F2 Floorstanding Speakers



GUTS: "A product is only as good as the parts inside; the guts so to speak. AUDITION speakers are built with the best quality components available. That's where the value is, they put their money into the guts. **AUDITION speakers not only look great but they sound amazing.**"

GLORY: "It was simple. We wanted to get the most sound for our money. So we didn't rush. We did our homework. We checked the specs. Read reviews. And of course, we listened. Very carefully. For the money we wanted to spend, nothing compared to AUDITION. **That's the kind of sound value that works for us.**"



GREAT SOUND. GREAT VALUE... We know you work hard for your money. That's why athena TECHNOLOGIES engineered the new AUDITION series of speakers to add excitement and pleasure to your music and movie experience. athena's breakthrough research, development and manufacturing expertise have achieved amazing new levels of dynamics, bass output and spaciousness... in short, great sound! And to top it all off, AUDITION speakers look like a million too. The AUDITION series silver and black cabinets beautifully match the latest receivers and TV's and fit perfectly into your modern lifestyle.

Go ahead. Take a look. Take a listen. Take 'em home.





AS-B1 Bookshelf Speaker | **COMPONENTS:** • 1-1" Teteron Dome Tweeter • 1-5.5" Composite Cone Woofer

SPECIFICATIONS: • Frequency response: 60Hz-20kHz +/- 3dB
• Room SPL: 90 db • Crossover point: 2.0kHz • Powerhandling: 100 watts • Dimensions: - Width: 7" (18.0 cm) - Height: 13-7/8" (35.0 cm) - Depth: 9-1/2" (24.1cm) • Use with optional SST-2234 stand



AS-B2 Bookshelf Speaker | **COMPONENTS:** • 1-1" Teteron Dome Tweeter • 1-6.5" Composite Cone Woofer

SPECIFICATIONS: • Frequency response: 50Hz-20kHz +/- 3dB
• Room SPL: 91 db • Crossover point: 2.0kHz • Powerhandling: 125 watts • Dimensions: - Width: 7-7/8" (20.0 cm) - Height: 15-3/4" (40.0 cm) - Depth: 9-1/2" (24.1 cm) • Use with optional SST-2234 stand



AS-F1 Floorstanding Speaker | **COMPONENTS:** • 1-1" Teteron Dome Tweeter • 1-8.0" Composite Cone Woofer

SPECIFICATIONS: • Frequency response: 40Hz-20kHz +/- 3dB
• Room SPL: 92 db • Crossover point: 2.0kHz
• Powerhandling: 175 watts • Dimensions: - Width: 9-1/2" (24.1 cm) - Height: 35-5/8" (90.5 cm) - Depth: 11-3/4" (29.8 cm)



AS-F2 Floorstanding Speaker | **COMPONENTS:** • 1-1" Teteron Dome Tweeter • 2-8.0" Composite Cone Woofer

SPECIFICATIONS: • Frequency response: 35Hz-20kHz +/- 3dB
• Room SPL: 93 db • Crossover point: 2.0kHz
• Powerhandling: 200 watts
• Dimensions: - Width: 9-1/2" (24.1 cm) - Height: 41-1/2" (105.5 cm) - Depth: 15" (38.0 cm)



AS-C1 Center Channel | **COMPONENTS:** • 1-1" Teteron Dome Tweeter • 2-5.5" Composite Cone Woofer

SPECIFICATIONS: • Frequency response: 60Hz-20kHz +/- 3dB
• Room SPL: 90 db • Crossover point: 2.0kHz • Powerhandling: 150 watts • Dimensions: - Width: 17-3/4" (45.0 cm) - Height: 7" (18.0 cm) - Depth: 9-1/2" (24.1 cm)
• Finish: Black Ash Cabinets with silver baffles and black grilles.



athena TECHNOLOGIES®

3641 McNicoll Avenue

Toronto, Ontario

Canada M1X 1G5

www.athenaspeakers.com

Printed in Canada. Subject to change without notice.

© 2001 athena TECHNOLOGIES®

Part #3PAB005E

Download from Www.Somanuals.com. All Manuals Search And Download.



AS-F1 Floorstanding Speakers



AS-F2 Floorstanding Speakers



GUTS: "A product is only as good as the parts inside; the guts so to speak. AUDITION speakers are built with the best quality components available. That's where the value is, they put their money into the guts. **AUDITION speakers not only look great but they sound amazing.**"

GLORY: "It was simple. We wanted to get the most sound for our money. So we didn't rush. We did our homework. We checked the specs. Read reviews. And of course, we listened. Very carefully. For the money we wanted to spend, nothing compared to AUDITION. **That's the kind of sound value that works for us.**"



AS-B1 Bookshelf Speaker | COMPONENTS: • 1-1" Teteron Dome Tweeter • 1-5.5" Composite Cone Woofer
SPECIFICATIONS: • Frequency response: 60Hz-20kHz +/- 3dB • Room SPL: 90 db • Crossover point: 2.0kHz • Powerhandling: 100 watts • Dimensions: - Width: 7" (18.0 cm) - Height: 13-7/8" (35.0 cm) - Depth: 9-1/2" (24.1cm) • Use with optional SST-2234 stand



AS-B2 Bookshelf Speaker | COMPONENTS: • 1-1" Teteron Dome Tweeter • 1-6.5" Composite Cone Woofer
SPECIFICATIONS: • Frequency response: 50Hz-20kHz +/- 3dB • Room SPL: 91 db • Crossover point: 2.0kHz • Powerhandling: 125 watts • Dimensions: - Width: 7-7/8" (20.0 cm) - Height: 15-3/4" (40.0 cm) - Depth: 9-1/2" (24.1 cm) • Use with optional SST-2234 stand



AS-F1 Floorstanding Speaker | COMPONENTS: • 1-1" Teteron Dome Tweeter • 1-8.0" Composite Cone Woofer
SPECIFICATIONS: • Frequency response: 40Hz-20kHz +/- 3dB • Room SPL: 92 db • Crossover point: 2.0kHz • Powerhandling: 175 watts • Dimensions: - Width: 9-1/2" (24.1 cm) - Height: 35-5/8" (90.5 cm) - Depth: 11-3/4" (29.8 cm)



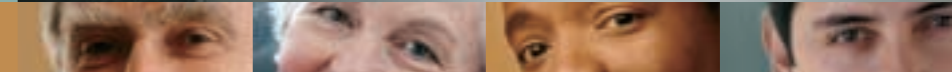
AS-F2 Floorstanding Speaker | COMPONENTS: • 1-1" Teteron Dome Tweeter • 2-8.0" Composite Cone Woofer
SPECIFICATIONS: • Frequency response: 35Hz-20kHz +/- 3dB • Room SPL: 93 db • Crossover point: 2.0kHz • Powerhandling: 200 watts • Dimensions: - Width: 9-1/2" (24.1 cm) - Height: 41-1/2" (105.5 cm) - Depth: 15" (38.0 cm)



AS-C1 Center Channel | COMPONENTS: • 1-1" Teteron Dome Tweeter • 2-5.5" Composite Cone Woofer
SPECIFICATIONS: • Frequency response: 60Hz-20kHz +/- 3dB • Room SPL: 90 db • Crossover point: 2.0kHz • Powerhandling: 150 watts • Dimensions: - Width: 17-3/4" (45.0 cm) - Height: 7" (18.0 cm) - Depth: 9-1/2" (24.1 cm) • Finish: Black Ash Cabinets with silver baffles and black grilles.



Create your sound.



athena TECHNOLOGIES®
3641 McNicoll Avenue
Toronto, Ontario
Canada M1X 1G5
www.athenaspeakers.com

Printed in Canada. Subject to change without notice.
© 2001 athena TECHNOLOGIES®
Part #3PAB005E

Download from www.Somanuals.com. All Manuals Search And Download.



AUDITION



AS-B1 Bookshelf Speakers



AS-B2 Bookshelf Speakers



FLYING COLORS:

"My speakers are important to me. I didn't want flash. I wanted substance. That's why I cut to the chase. To AUDITION. I couldn't believe the specs and the quality for the price. AUDITION just blew everything else away. When it comes to performing up to my expectations, **these speakers passed my AUDITION with flying colors.**"

TOUGH-TO-BEAT:

"Hard rock demands a tough-to-beat speaker. So I didn't mess around with any kid's stuff. I went right for AUDITION. A lot of other speakers put their money into the look of the woofer, not the way it works. AUDITION delivers the best quality and performance for this price. And hey, they look awesome too. **That's tough-to-beat.**"

GREAT SOUND. GREAT VALUE... We know you work hard for your money. That's why athena TECHNOLOGIES engineered the new AUDITION series of speakers to add excitement and pleasure to your music and movie experience. athena's breakthrough research, development and manufacturing expertise have achieved amazing new levels of dynamics, bass output and spaciousness...in short, great sound! And to top it all off, AUDITION speakers look like a million too. The AUDITION series silver and black cabinets beautifully match the latest receivers and TV's and fit perfectly into your modern lifestyle. **Go ahead. Take a look. Take a listen. Take 'em home.**



Free Manuals Download Website

<http://myh66.com>

<http://usermanuals.us>

<http://www.somanuals.com>

<http://www.4manuals.cc>

<http://www.manual-lib.com>

<http://www.404manual.com>

<http://www.luxmanual.com>

<http://aubethermostatmanual.com>

Golf course search by state

<http://golfingnear.com>

Email search by domain

<http://emailbydomain.com>

Auto manuals search

<http://auto.somanuals.com>

TV manuals search

<http://tv.somanuals.com>