

Installation & Replacement

Follow the individual procedures to perform the notebook's installation and replacement of various major components.

Z71 Series Notebook balances novelty and mobility in an elegantly designed casing. The key installable and replaceable items include the CPU module, memory module, HDD, Optical drive and the WLAN module.

Be sure to follow the safety instructions described from the start to safeguard the notebook against any potential damages.

This chapter includes the following items:

- Appropriate Tools
- Precautions
- HDD Installation & Replacement
- Memory Installation & Replacement
- CPU Installation & Replacement
- Wireless LAN Installation & Replacement

HDD Installation & Replacement

The Z71 Series Notebook uses an industry-standard 2½" HDD with IDE interface. You can install the HDD to any capacity of your choice within our approval and prior test.

Installing HDD

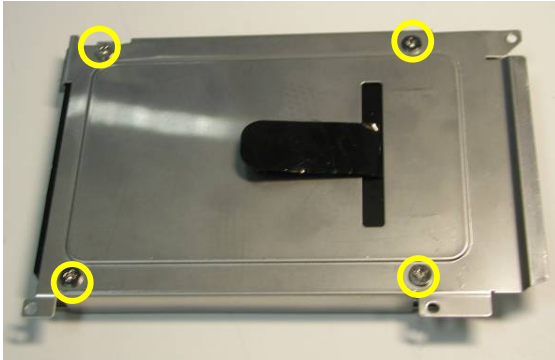
1. Turn the notebook over and remove battery pack first.
2. Remove 2 screws on the bottom and remove the HDD cover



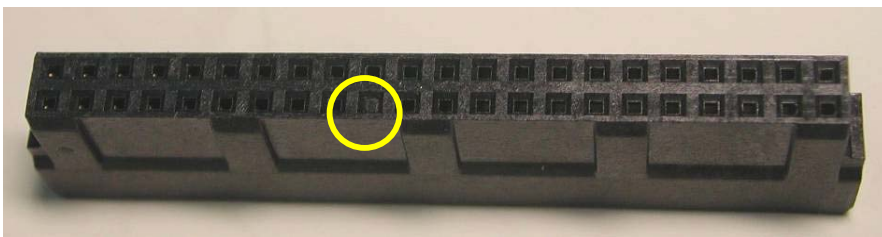
3. Remove 1 screw (M2*6(K)) and take away the bracket then pull out the HDD Housing.



4. Replace a new HDD into the HDD Housing and secure 4 screws



5. Connect the HDD connector (mind that a direction of the connector by the empty pin position).



6. Insert the hard disk module and connect the FPC and lay it down until it's installed properly and secure 1 screw (M2*6L(K)).



7. Affix the HDD cover and secure 2 screws.



Memory Installation & Replacement

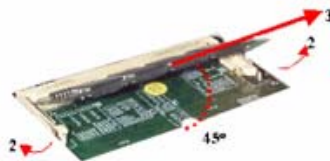
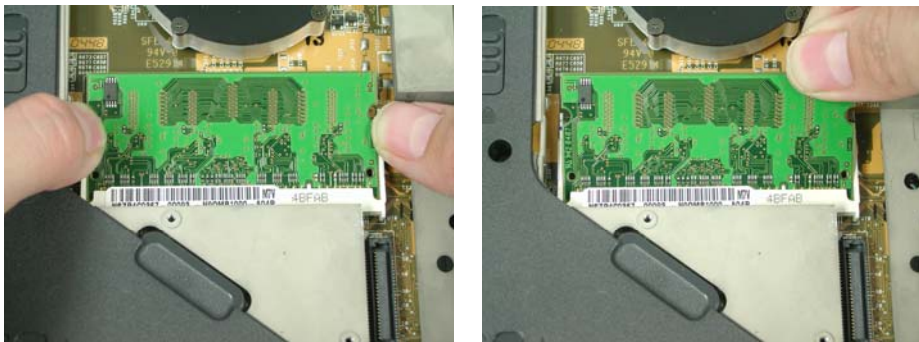
The Z71 Series Notebook comes standard with 2 DDR sockets onboard. You can upgrade the total memory up to 1GB with two 512MB module.

Installing & Replacing memory

1. Remove 9 screws (M2*6L(K)) from back cover and remove it.



2. If there is an existing memory, remove it by opening the latches, which will pop the module up to a 30° angles, and then pulling out the module in that angle.

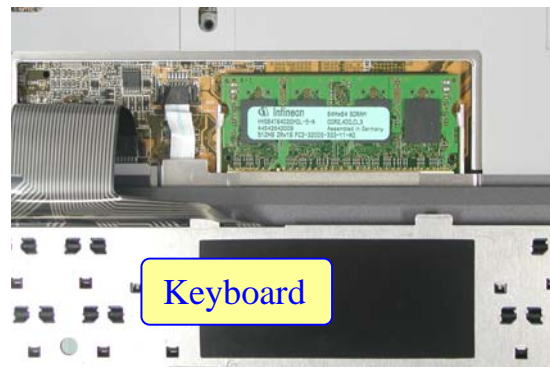


Removing 2nd Memory module

1. Remove 2 screws (M2*5L(K)) at bottom case.



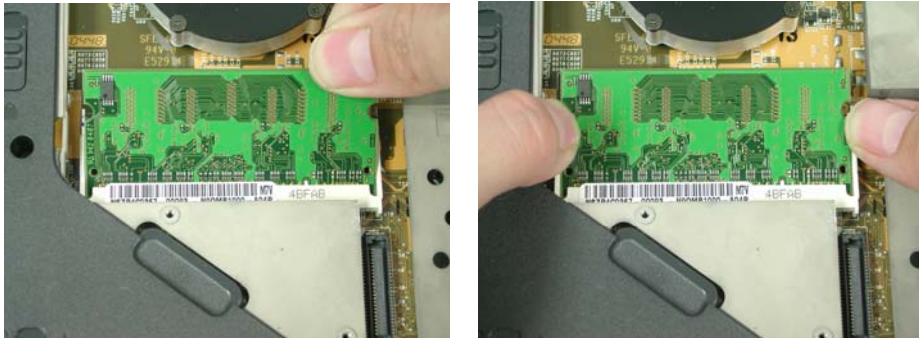
2. Release 3 keyboard latches with a pair of tweezers as shown below. Then move it forward and lay it down.



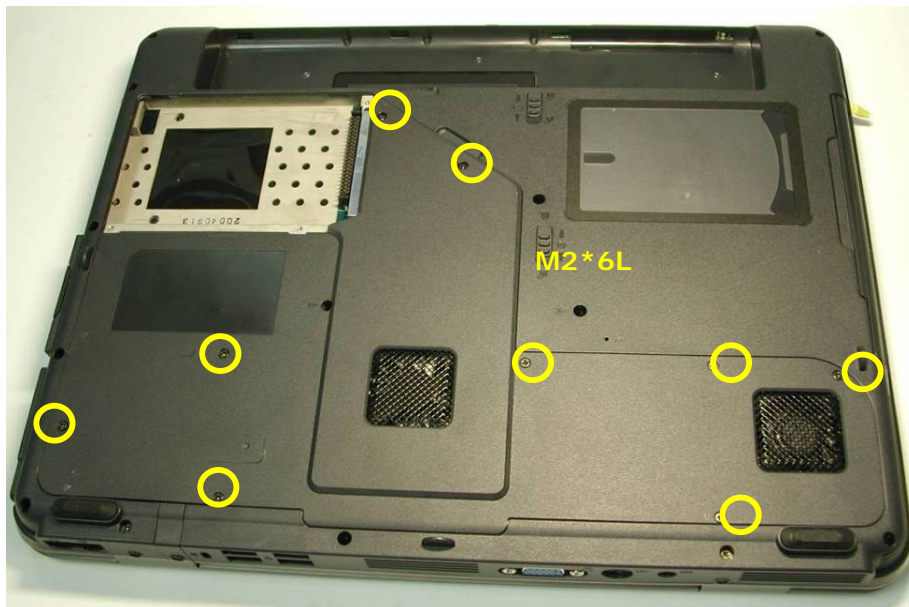
3. Remove memory module by opening the latches, which will pop the module up to a 30° angles, and then pulling out the module in that angle.



4. Insert memory at a 30° angles and press down until it clicks into the latches then put the memory cover.



5. Secure 9 screws (M2*5L(K)) to fix the memory cover .



CPU Installation & Replacement

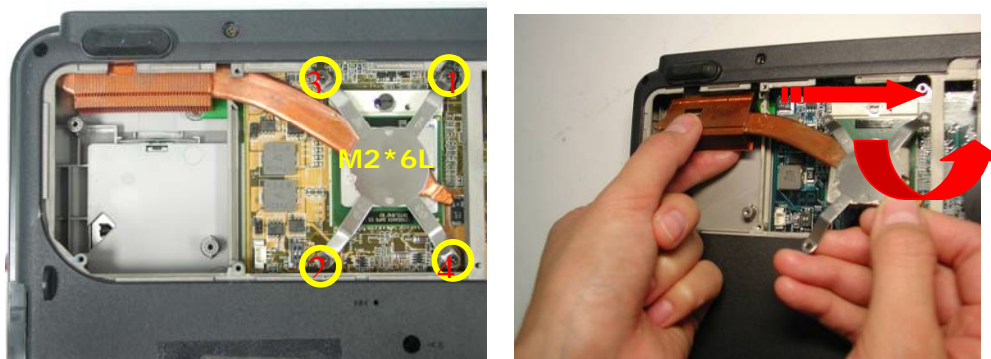
1. Remove 9 screws (M2*6L(K)) from back cover and remove it.



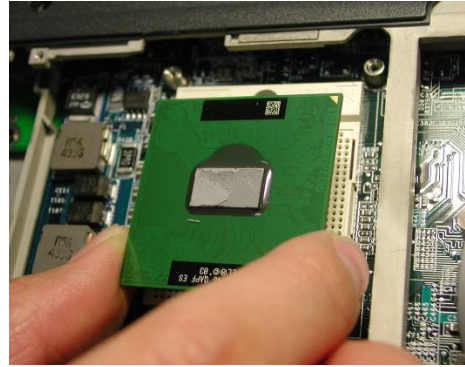
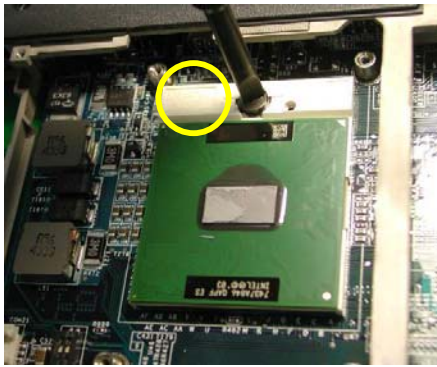
2. Remove 2 screws (M2*6L(K)) aside the CPU fan and disconnect FAN connector then take away the Fan Module.



3. Remove the 4 screws(M2*6L(K)) by order upon the thermal module and take away the CPU heat sink module gently.



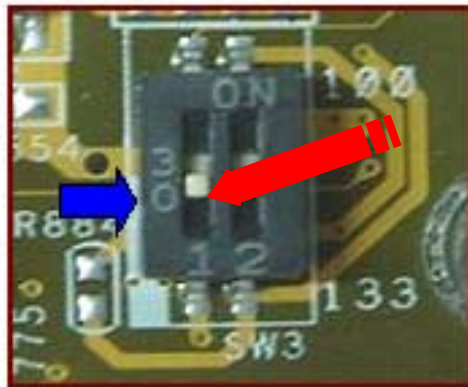
4. Turn the non-removable screw here 180 degrees counter-clockwise to loosen the CPU and take the CPU away.



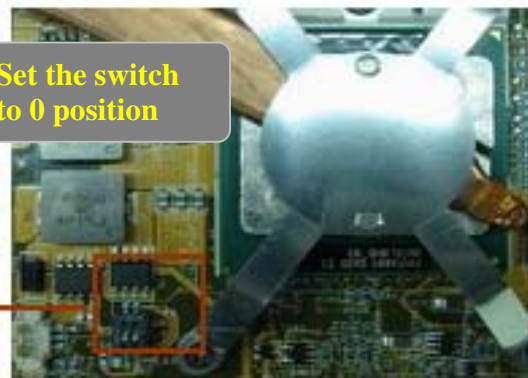
Note: If thermal module has no thermal pad on it, please plus a thermal pad on the CPU die before assembling.

Note: Z71 is adjustable for Dothan CPU or Dothan Celeron CPU. Please refer to illustration as below.

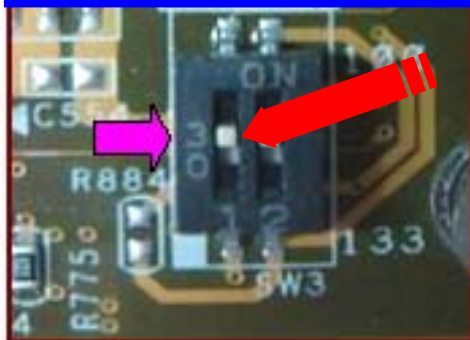
For Pentium-M (533MHz)



Set the switch to 0 position



For Pentium-M (400MHz) & Celeron-M (400MHz)



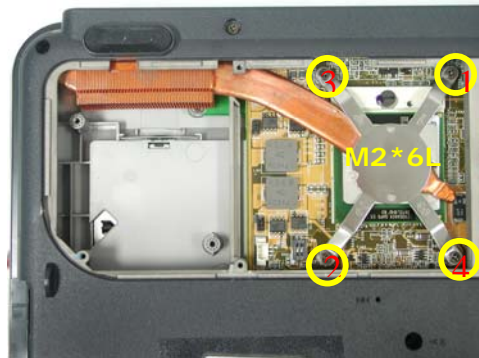
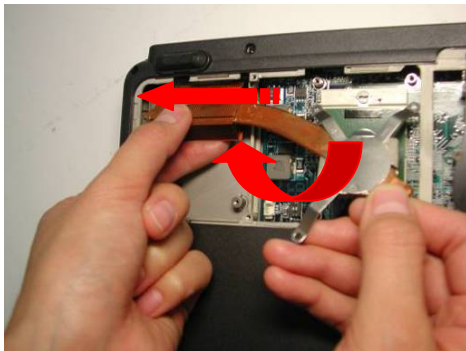
Set the switch to 3 position



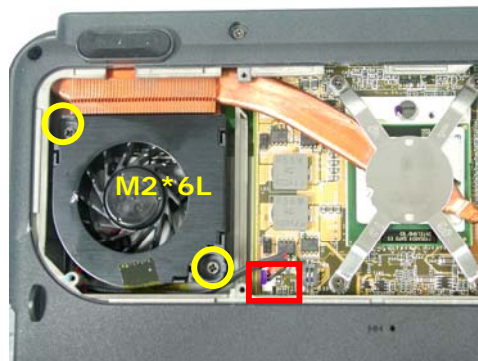
5. Use the CPU vacuum to “suck up” the CPU then and turn the non-removable screw here 180 degrees clockwise to lock the CPU.



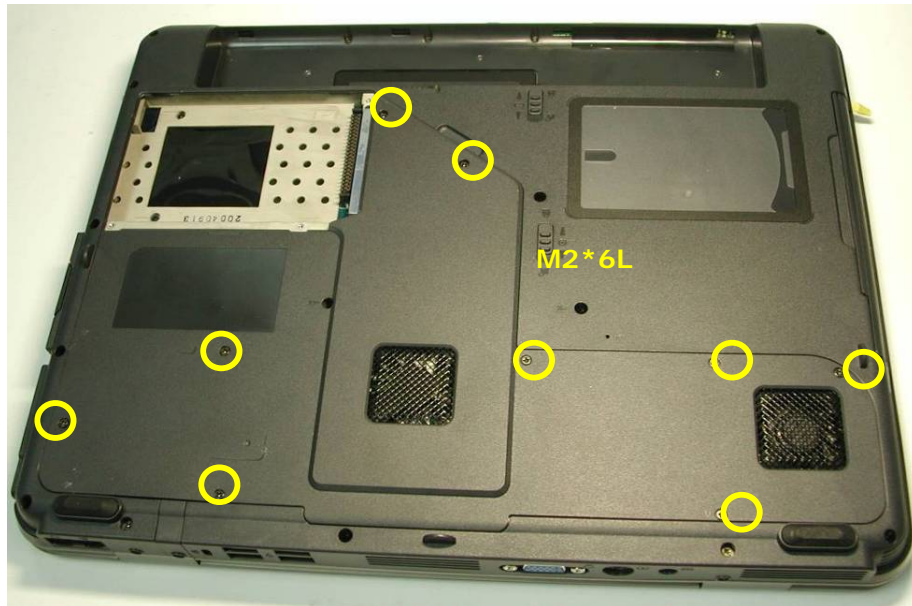
6. Install the CPU heat sink module gently and secure 4 screws (M2*6L(K)) by order upon the CPU module .



7. Put on the fan bracket and secure 2 screws (M2*6L(K)) then connect the cable.



8. Install back cover and secure 9 screws (M2*6L(K)) on it



WLAN Module Installation & Replacement

MINI PCI REMOVAL

1. Remove 9 screws (M2*6L(K) from back cover and remove it.



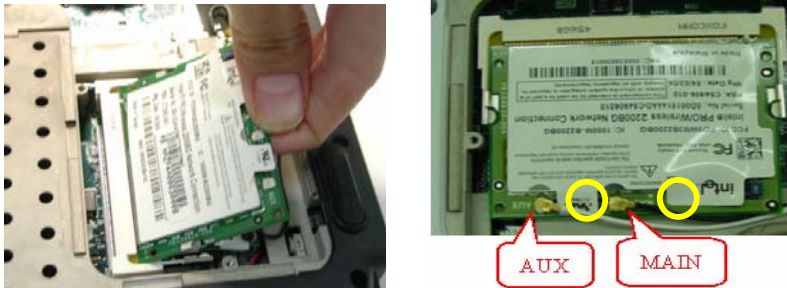
2. Remove 2 Antenna cables from Wireless LAN Module



3. Remove the Wireless LAN module by opening the 2 latches aside, which will pop the module up to an angle of 30°, then pull out the module in that angle just like memory module.



4. Insert the mini-PCI module and push down to lock it then connect the 2 antenna cables and put on the mini-PCI cover.



5. Install back cover and secure 9 screws (M2*6L(K)) on it



Free Manuals Download Website

<http://myh66.com>

<http://usermanuals.us>

<http://www.somanuals.com>

<http://www.4manuals.cc>

<http://www.manual-lib.com>

<http://www.404manual.com>

<http://www.luxmanual.com>

<http://aubethermostatmanual.com>

Golf course search by state

<http://golfingnear.com>

Email search by domain

<http://emailbydomain.com>

Auto manuals search

<http://auto.somanuals.com>

TV manuals search

<http://tv.somanuals.com>