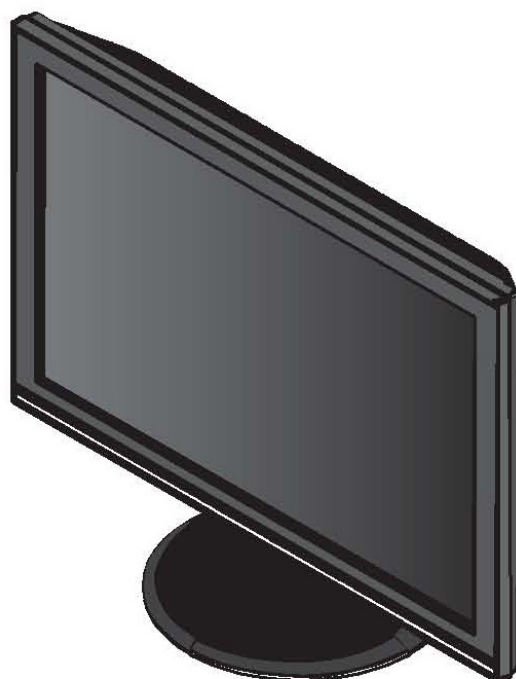


**ASUS<sup>®</sup>**

# **VW192 Series** *LCD Monitor*

## **Quick Start Guide**

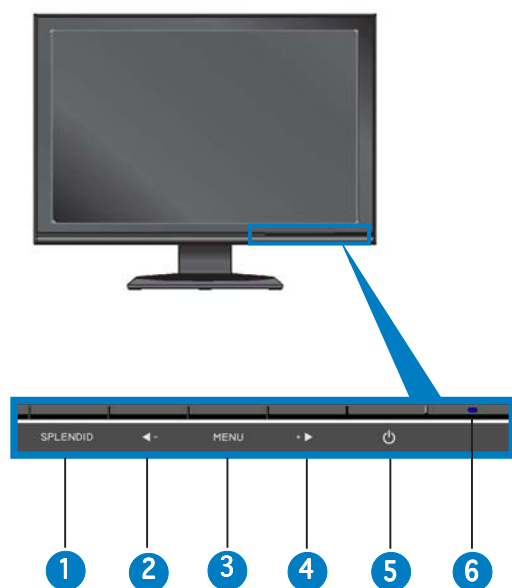


## Safety information

- Before setting up the monitor, carefully read all the documentation that came with the package.
- To prevent fire or shock hazard, never expose the monitor to rain or moisture.
- The monitor should be operated only from the type of power source indicated on the label. If you are not sure of the type of power supplied to your home, consult your dealer or local power company.
- Use the appropriate power plug which complies with your local power standard.
- To ensure satisfactory operation, use the monitor only with UL listed computers which have appropriate configured receptacles marked between 100-240V AC.
- If you encounter technical problems with the monitor, contact a qualified service technician or your retailer.

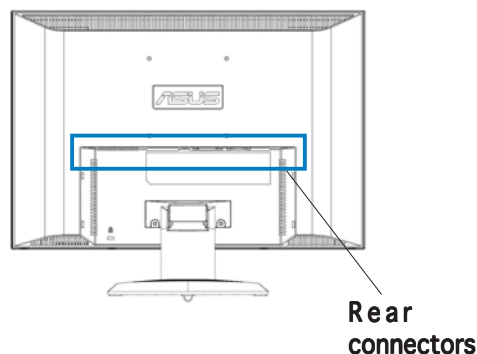
## Monitor introduction

### Front view



1. SPLENDID™ mode hotkey
2. Decrease button/Volume hotkey
3. MENU button
4. Increase button/Brightness hotkey
5. Power button
6. Power indicator

### Rear view



(From left to right)

1. AC-in port
2. DVI port (VW192T only)
3. VGA port
4. Audio-in port (VW192T/ VW192S only)

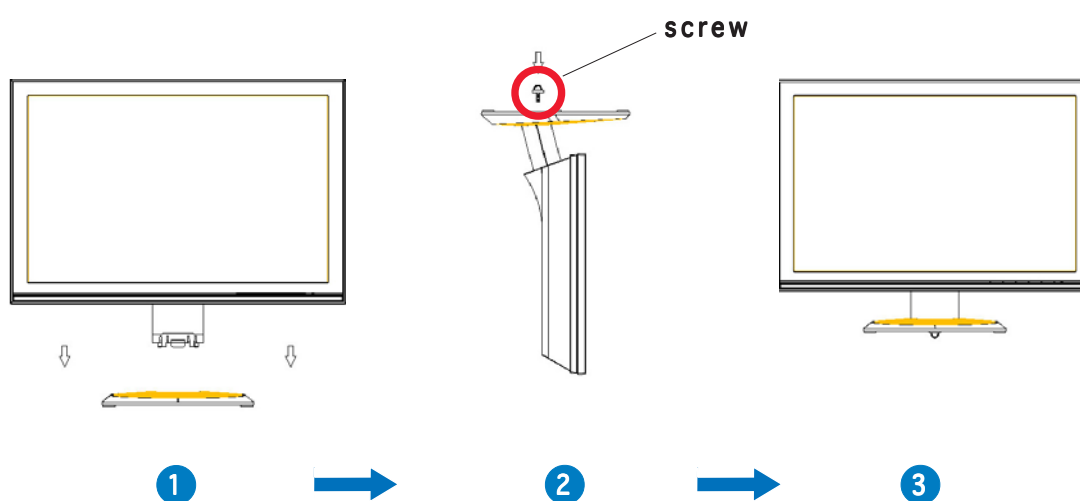
## Assembling the monitor base

To assemble the monitor base:

1. Connect the base with the monitor. A click shows that the base has been connected successfully.
2. Tighten the screw as the drawing shows to fix the base.
3. Adjust the monitor to the angle that is most comfortable for you.



- We recommend that you cover the table surface with soft cloth to prevent damage to the monitor.



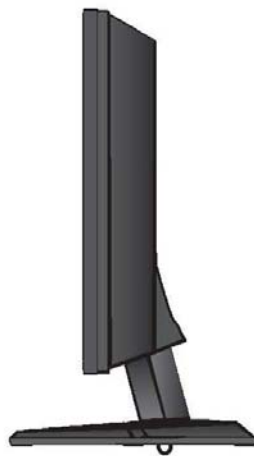
## Connecting the cables

1. Remove the rear cover.
2. Connect the cables as the following instructions:
  - **To connect the audio cable:** connect one end of the audio cable to the monitor's Audio-in port, and then connect the other end to the computer multi-media (or audio) card's audio output.
  - **To connect the power cord:** connect one end of the power cord securely to the monitor's AC input port, the other end to a power outlet.
  - **To connect the VGA/DVI cable:**
    - a. Plug the VGA/DVI connector to the LCD monitor's VGA/DVI port.
    - b. Connect the other end of the VGA/DVI cable to your computer's VGA/DVI port.
    - c. Tighten the two screws to secure the VGA/DVI connector.
3. Close the rear cover. Align the cover to the six slots near the ports, then close the cover carefully. A click indicates that the cover has been closed successfully.

## Adjusting the monitor

- For optimal viewing, we recommend that you look at the full face of the monitor, then adjust the monitor to the angle that is most comfortable for you.
- Hold the stand to prevent the monitor from falling when you change its angle.
- You can adjust the monitor's angle from  $-5^{\circ}$  to  $20^{\circ}$ .

$-5^{\circ} \sim 20^{\circ}$



## Free Manuals Download Website

<http://myh66.com>

<http://usermanuals.us>

<http://www.somanuals.com>

<http://www.4manuals.cc>

<http://www.manual-lib.com>

<http://www.404manual.com>

<http://www.luxmanual.com>

<http://aubethermostatmanual.com>

Golf course search by state

<http://golfingnear.com>

Email search by domain

<http://emailbydomain.com>

Auto manuals search

<http://auto.somanuals.com>

TV manuals search

<http://tv.somanuals.com>