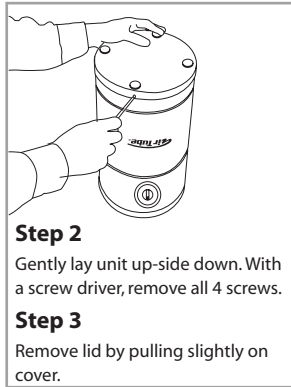


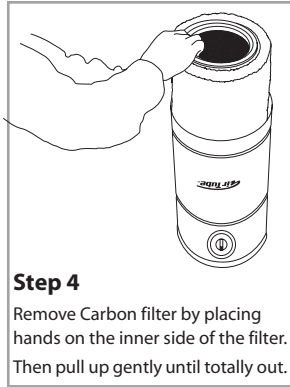
REPLACING FILTER ASSEMBLY- AirTube Jr.



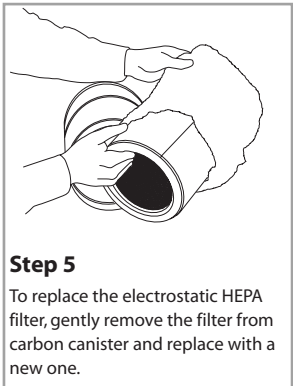
Step 1
Turn Power Off and unplug receptacle.



Step 2
Gently lay unit up-side down. With a screw driver, remove all 4 screws.
Step 3
Remove lid by pulling slightly on cover.



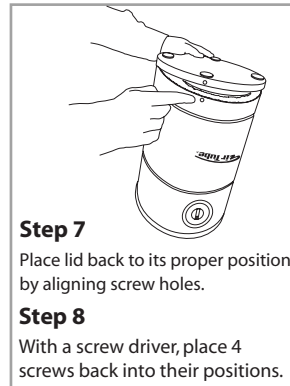
Step 4
Remove Carbon filter by placing hands on the inner side of the filter. Then pull up gently until totally out.



Step 5
To replace the electrostatic HEPA filter, gently remove the filter from carbon canister and replace with a new one.



Step 6
Replace all filters with new ones then reassemble by inserting the Carbon filter.



Step 7
Place lid back to its proper position by aligning screw holes.
Step 8
With a screw driver, place 4 screws back into their positions.

REPLACEMENT PARTS

| MODELS | Air Tube Jr. | Air Tube | Air Tube Supreme |
|------------------------|-----------------|---------------|------------------|
| Carbon (Exec Models) | 9" A2FCW301 | 9" A3FCW302 | 12" A3FCB401 |
| Carbon (Vocarb Models) | 9" A2FCW302 | 9" A3FCW303 | 12" A3FCB403 |
| Micro-HEPA Wrap | A2FMR002 9 x 21 | A3FH0410 HEPA | A3FH0420 HEPA |
| PRE-FILTER | ----- | A3FMP009 | A3FMP012 |
| Motor | A2EL0040 | A2EL0040 | A2EL0040 |
| Switch | CMEL0046 | CMEL0046 | CMEL0046 |
| Cord | A3EL0046 | A3EL0046 | A3EL0046 |
| Handle | A4HD8414 | A4HD8414 | A4HD8414 |



Operation and Maintenance Manual for Air Tube Series



AllerAir Industries Inc. AirTube Series

Congratulations, you are moments away from fresher, cleaner indoor air. Your new **AllerAir** unit will combat many of the chemicals, gases, odors and particles responsible for poor indoor air quality, and in turn, health concerns such as allergies, asthma, sick building syndrome and multiple chemical sensitivity. As with any air cleaner, proper maintenance of your unit is a vital part of keeping it operating at peak efficiency.

Operation:

Your unit is shipped fully assembled and ready for use. Plug into 120V-15amp outlet. For best results situate your unit close to your sitting, sleeping or work area.

NOTE: Please save your packaging. Original packaging will be required for all warranty returns.

WARNING!

Before removing the top or bottom of the unit for any reason, always unplug the cord from the power supply.

Maintenance:

AirTube & Air Tube Supreme

The HEPA Filter (Model AirTube HEPA)

- Should be changed after approximately 24 months of use in an average home environment.
- A noticeable lessening of airflow is a sign that it may be time to replace this filter.

The Carbon Filter (Model AirTube Carbon)

- Should be changed after approximately 12 months of use in an average home environment.
- A noticeable decrease in air quality could also be a sign that it may be time to replace this filter.

The Pre-filter (Model AirTube Prefilter)

- Replace or vacuum from the outside of the unit every 2-3 months.

AirTube Jr.

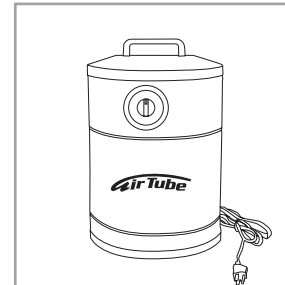
The Electrostatic HEPA Filter (Model AirTube Jr. Electrostatic HEPA)

- Should be changed after approximately 12 months of use in an average home environment.
- A noticeable lessening of airflow is a sign that it may be time to replace this filter.

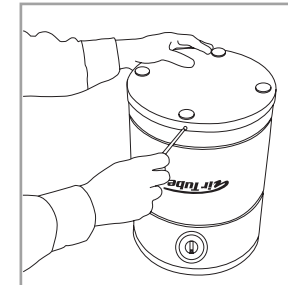
The Carbon Filter (Model AirTube Jr. Carbon)

- Should be changed after approximately 9-12 months of use in an average home environment.
- A noticeable decrease in air quality could also be a sign that it may be time to replace this filter.

REPLACING FILTER ASSEMBLY- AirTube & Air Tube Supreme



Step 1
Turn Power Off and unplug receptacle.



Step 2
Gently lay unit up-side down. With a screw driver, remove all 4 screws.



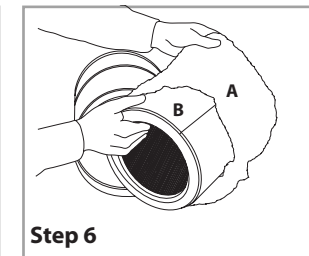
Step 3
Remove lid by pulling slightly on cover.



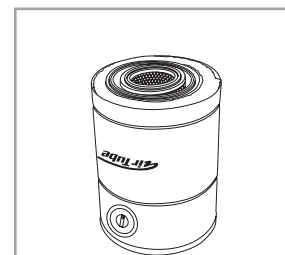
Step 4
First remove HEPA filter by placing your hand on the inner side of the filter. Then pull up gently until totally out.



Step 5
Now remove Carbon filter by placing hands on the inner side of the filter. Then pull up gently until totally out.



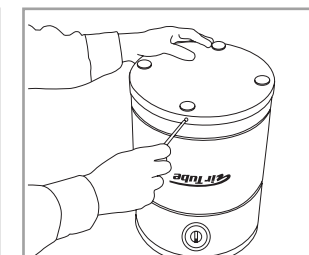
Step 6
A- To replace pre-filter, gently remove pre-filter from Carbon canister and replace with new one.
B- To replace Anti-microbial filter, peel off filter liner.



Step 7
Replace all filters with new ones then reassemble by inserting the Carbon filter first then the HEPA.



Step 8
Place lid back to its proper position by aligning screw holes.



Step 9
With a screw driver, place 4 screws back into their positions.

Free Manuals Download Website

<http://myh66.com>

<http://usermanuals.us>

<http://www.somanuals.com>

<http://www.4manuals.cc>

<http://www.manual-lib.com>

<http://www.404manual.com>

<http://www.luxmanual.com>

<http://aubethermostatmanual.com>

Golf course search by state

<http://golfingnear.com>

Email search by domain

<http://emailbydomain.com>

Auto manuals search

<http://auto.somanuals.com>

TV manuals search

<http://tv.somanuals.com>