



## MasterCool Contractor High-Performance With 12" Thick Cooling Pads

- High-Performance MasterCool Pads provide up to 5 degrees colder air than standard pads and 90% evaporative cooling efficiency.
- Available in 4,800 and 6,500 CFM models and in down, side or up-discharge.

Model Number	Air Discharge	Motor HP	Voltage	Cabinet			Duct Opening	Ind. Std. CFM Rating	Certified Air Delivery CFM (Cubic Feet per Minute)					
				H	W	D			Inches static pressure w.g. (water gauge)					
									.0	.1	.2	.3	.4	.5
CHC431	Down	3/4	120	27- 1/4	42	47	17- 3/4 x 17- 3/4	4800	3590	3384	3180	2976	2772	2568
CHC432	Down	3/4	240	27- 1/4	42	47	17- 3/4 x 17- 3/4	4800	3590	3384	3180	2976	2772	2568
CHC441	Side	3/4	120	27- 1/4	42	47	17- 3/4 x 17- 3/4	4800	3590	3384	3180	2976	2772	2568
CHC442	Side	3/4	240	27- 1/4	42	47	17- 3/4 x 17- 3/4	4800	3590	3384	3180	2976	2772	2568
CHC631	Down	1	120	32- 1/4	42	47	19- 3/4 x 19- 3/4	6500	4350	4225	4050	3850	3600	3375
CHC632	Down	1	240	32- 1/4	42	47	19- 3/4 x 19- 3/4	6500	4350	4225	4050	3850	3600	3375
CHC641	Side	1	120	32- 1/4	42	47	19- 3/4 x 19- 3/4	6500	4350	4225	4050	3850	3600	3375
CHC642	Side	1	240	32- 1/4	42	47	19- 3/4 x 19- 3/4	6500	4350	4225	4050	3850	3600	3375
CHC651	Up	1	120	32- 1/4	42	47	19- 3/4 x 19- 3/4	6500	4350	4225	4050	3850	3600	3375
CHC652	Up	1	240	32- 1/4	42	47	19- 3/4 x 19- 3/4	6500	4350	4225	4050	3850	3600	3375

Weights for models CHC431/ 432/ 441/ 442 - Shipping: 178 Operating: 215  
 Weights for models CHC631/ 632/ 641/ 642/ 651/ 652 - Shipping: 239 Operating: 295



## MasterCool Contractor With 8" Thick Cooling Pads

- Original MasterCool pads provide 80% evaporative cooling efficiency.
- Available in 4,800 and 6,500 CFM models and in down or side discharge.

Model Number	Air Discharge	Motor HP	Voltage	Cabinet			Duct Opening	Ind. Std. CFM Rating	Certified Air Delivery CFM (Cubic Feet per Minute)					
				H	W	D			Inches static pressure w.g. (water gauge)					
									.0	.1	.2	.3	.4	.5
CMC431	Down	3/4	120	27- 1/4	42	43	17- 3/4 x 17- 3/4	4800	3675	3469	3265	3061	2857	2653
CMC432	Down	3/4	240	27- 1/4	42	43	17- 3/4 x 17- 3/4	4800	3675	3469	3265	3061	2857	2653
CMC441	Side	3/4	120	27- 1/4	42	43	17- 3/4 x 17- 3/4	4800	3675	3469	3265	3061	2857	2653
CMC442	Side	3/4	240	27- 1/4	42	43	17- 3/4 x 17- 3/4	4800	3675	3469	3265	3061	2857	2653
CMC631	Down	1	120	32- 1/4	42	43	19- 3/4 x 19- 3/4	6500	4550	4425	4225	4000	3750	3475
CMC632	Down	1	240	32- 1/4	42	43	19- 3/4 x 19- 3/4	6500	4550	4425	4225	4000	3750	3475
CMC641	Side	1	120	32- 1/4	42	43	19- 3/4 x 19- 3/4	6500	4550	4425	4225	4000	3750	3475
CMC642	Side	1	240	32- 1/4	42	43	19- 3/4 x 19- 3/4	6500	4550	4425	4225	4000	3750	3475

Weights for models CMC431/ 432/ 441/ 442 - Shipping: 158 Operating: 185  
 Weights for models CMC631/ 632/ 641/ 642 - Shipping: 219 Operating: 250



MasterCool evaporative coolers and components are designed and tested in accordance with one or more of the following standards or agencies:  
 Air Delivery - Data published derived from tests conducted in accordance with A.M.C.A. (Air Movement and Control Association.) Standard 210  
 Sealant - Water Immersion - per ASTM D870. Flexibility - per ASTM D756.  
 Corrosion Resistance - per ASTM B117. Cycle/Freeze/Thaw - per ASTM C117  
 POLYBOND® - Corrosion Resistance - per ASTM B117. Pencil Hardness - per ASTM D3363. Adhesion - ASTM D3359. Impact Resistance - per ASTM D2794.

Flexibility - per ASTM D522. Specular Gloss - per ASTM D523. Surface Burning Characteristics of Building Materials (best Rating) - per UL 723 and ASTM E-84  
 Polymeric Materials - Tested in accordance with UL 94 and 746C.  
 City of Los Angeles (C.O.L.A.) RR930224 (for all single-phase applications) or RR930190 (for 3-phase applications) Electrical, and RR8141 Mechanical.  
 \*MasterCool Warranties vary by product, for complete coverage and details contact your MasterCool representative or AdobeAir Customer Service at (602) 257-0060.

The world leader in evaporative cooling technology, AdobeAir, Inc. is continually involved in the process of product improvement. AdobeAir, Inc. therefore reserves the right to change specifications and/or design without prior notice. To obtain the most current information and/or specifications, visit the AdobeAir, Inc. web site at [www.AdobeAir.com](http://www.AdobeAir.com).

1450 E. Grant Street  
 Phoenix, Arizona 85034  
 877-595-EVAP (3827)



L900795A - December 2006

*More Energy Savings...  
 More Water Savings...  
 More Comfort...  
 Than Any Other Evaporative Cooler.*



# WHAT IT TAKES TO BE THE BEST

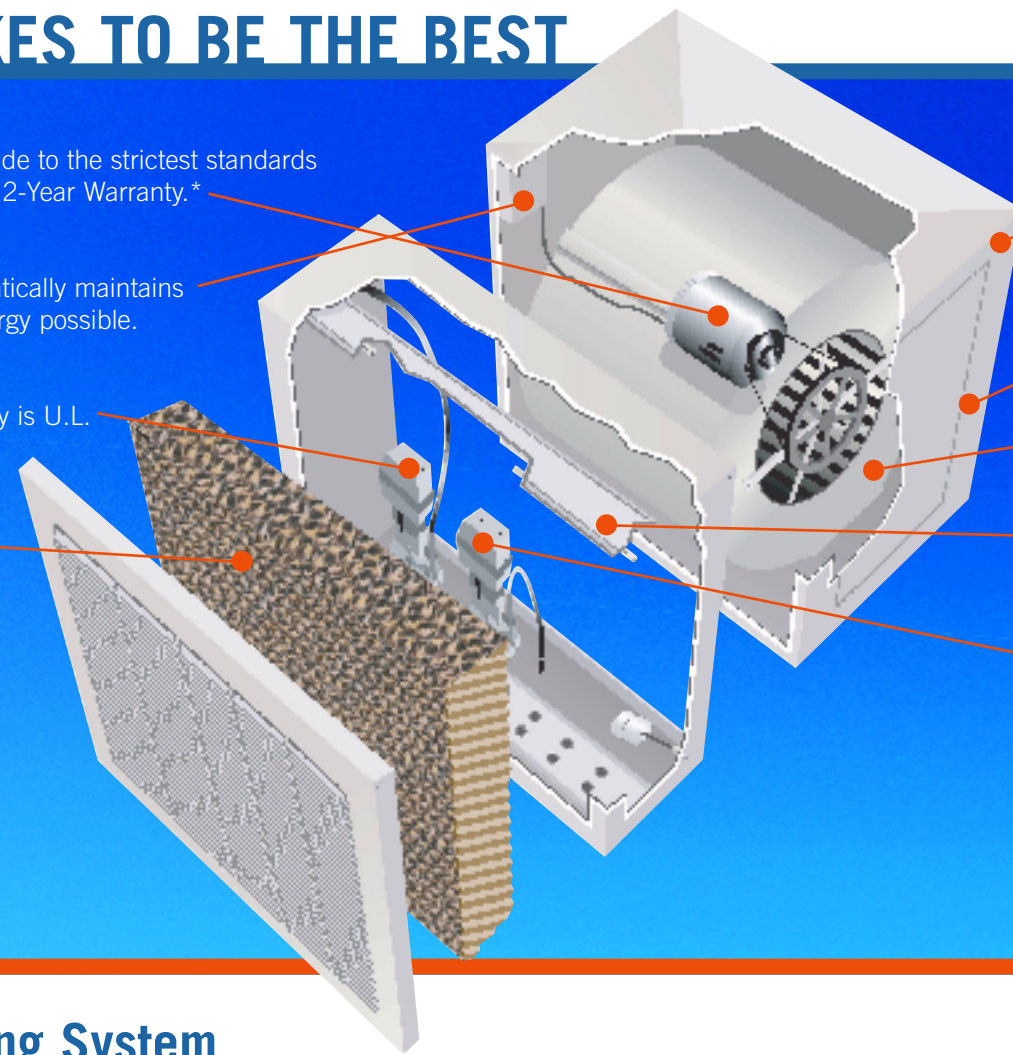
# COOLER. CLEANER. MORE EFFICIENT.

**Factory Installed 2-Speed Motor** – U.L. Recognized. Made to the strictest standards in the industry so it runs cooler and lasts longer with a 2-Year Warranty.\*

**Factory Installed Thermostatic Control System** – Automatically maintains the desired temperature using the least amount of energy possible.

**Factory Installed Cooler Pump** – The best in the industry is U.L. Recognized and backed by a 2-Year Warranty.\*

**MasterCool Pad** – Backed by a 5-Year Warranty, this durable long lasting and reliable cooling pad provides higher efficiency, greater comfort and lower energy costs than other pads.



**Exclusive PolyBond® Finish** – A 5-layer finish keeps the elements out and the quality in.

**Dry Module** – Separate wet and dry modules keep moisture away from vital working parts.

**Dynamically Balanced Blower Wheel** – Ensures quiet and efficient operation.

**Water Distribution System** – All steel construction ensures even water distribution for complete pad saturation and maximum cooling efficiency.

**Factory Installed Drain Pump** – Automatically keeps your cooler cleaner by reducing scale and build-up.



## A Complete Packaged Cooling System

The MasterCool Contractor series includes motor, pumps, and thermostatic control. All components have been specifically designed to provide the maximum comfort at the minimum operating cost.

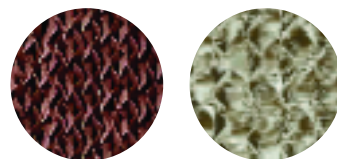


### Control System

The factory installed control system is fully integrated with all electrical components, and even includes on-board buttons that allow testing of the motor, cooling pump and drain pump from inside the cooler. Standard thermostat wiring is used to connect the control box to the wall thermostat and all electrical components are U.L. Recognized. A safety disconnect switch is included as a convenient method to turn off power to the cooler when necessary.

### Motor & Cooling Pump

Every MasterCool pump is U.L. Recognized, thermally protected, grounded and flame retardant. Our motors are equally impressive. With all-copper windings and superior construction, you'll get years of reliable operation and superior energy savings.



With Drain Pump      Without Drain Pump

### Drain Pump

The drain pump automatically replaces the stale, dirty water in the cooler with fresh, clean water every six continuous hours the cooler is in operation. Mineral deposits, algae and bacteria get washed out, so the water stays purer and the air stays virtually odor-free. The systematic flushing of the pan prevents unnecessary water usage and can save up to 3,000 gallons of water per month.



## What is so special about the MasterCool Pad?

The MasterCool evaporative pad is constructed of special cellulose material designed to give high absorbency with strong resistance to deterioration, extending the life of the pad and saving money. The cross-fluted design continually directs water to the air-entering side, inducing a highly turbulent mixing of air and water for optimum evaporation and maximum cooling efficiency.



## Isn't Evaporative Cooling just for dry desert climates?

While evaporative cooling is especially suited to dry desert climates, it is also effective in more humid areas. As temperatures rise throughout the day, relative humidity levels drop. Usually by midday, humidity levels have dropped to well within the range where MasterCool can provide relief from the heat.

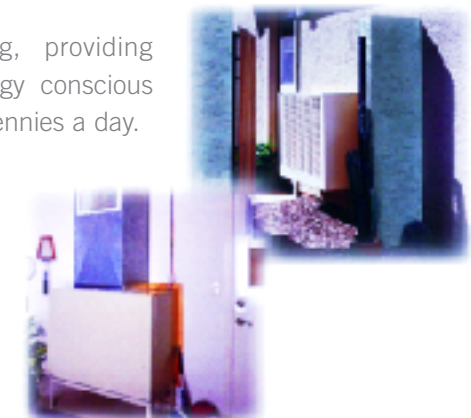


## Why Evaporative Cooling?

Evaporative Cooling is the affordable solution for cooling, providing economical cooling solutions for the environmentally and energy conscious consumer. Evaporative Cooling works cleaner and better for just pennies a day.

## Also Available in Up-Discharge Models

Combine the greatest efficiency and cooling power with a design to comply with even the strictest Homeowner's Association CCRs.



# COOL, CLEAN COMFORT ... NATURALLY.

## Free Manuals Download Website

<http://myh66.com>

<http://usermanuals.us>

<http://www.somanuals.com>

<http://www.4manuals.cc>

<http://www.manual-lib.com>

<http://www.404manual.com>

<http://www.luxmanual.com>

<http://aubethermostatmanual.com>

Golf course search by state

<http://golfingnear.com>

Email search by domain

<http://emailbydomain.com>

Auto manuals search

<http://auto.somanuals.com>

TV manuals search

<http://tv.somanuals.com>