



VISTAQUEST
— a clearer vision —TM

VQ DV7

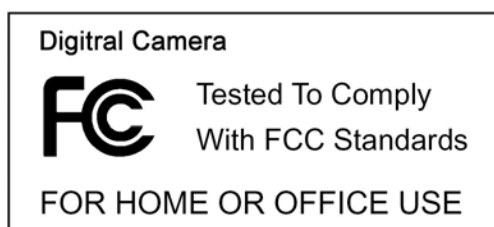


User's Manual

For customers in North and South America

For customers in USA

This device complies with Part 15 of the FCC rules. Operation is subject to the following two conditions:



- (1) This device may not cause harmful interference.
- (2) This device must accept any interference received, including interference that may cause undesired operation.

For customers in Canada

This Class B digital apparatus meets all requirements of the Canadian Interference-Causing Equipment Regulations.

For customers in Europe



“CE” mark indicates that this product complies with the European requirements for safety, health, environment and customer protection. “CE” mark DVs are intended for sales in Europe.

Table of Contents **Page**

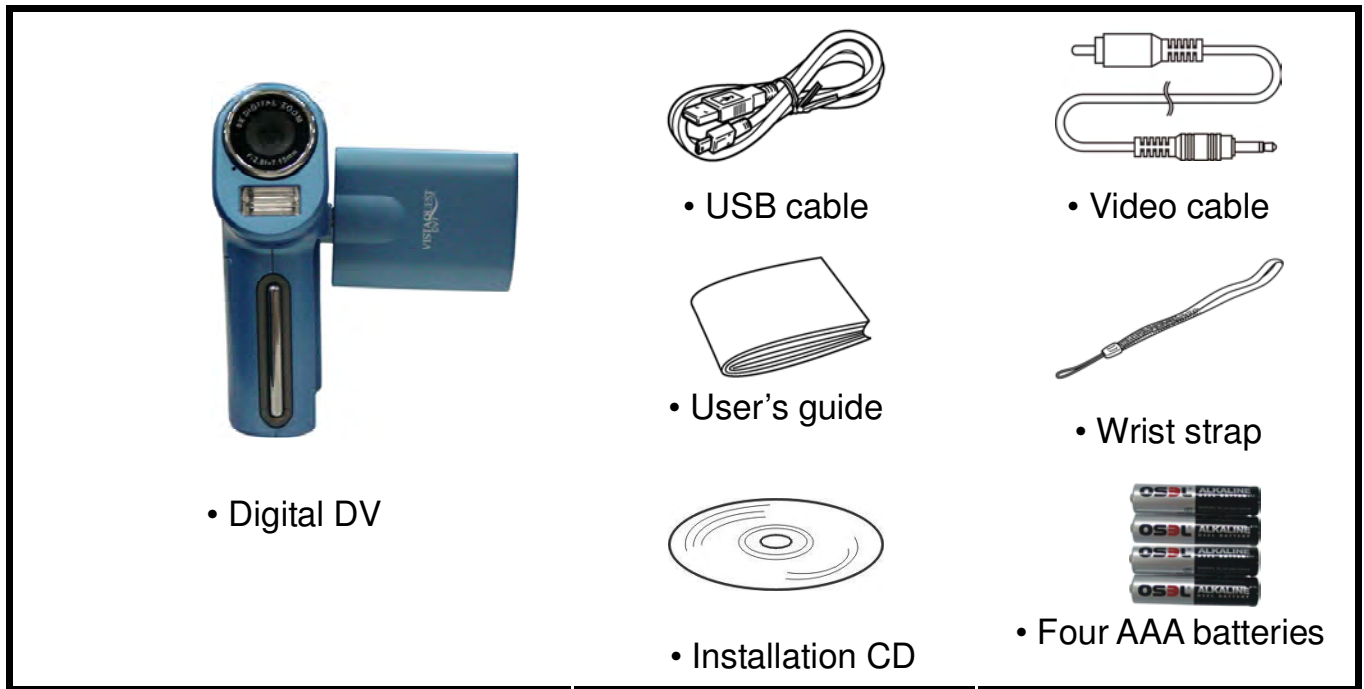
- 1. **System Requirements** ----- 1
- 2. **Package Contents** ----- 1
- 3. **Name of Parts** ----- 2
- 4. **Display Information** ----- 3
- 5. **Getting Started** ----- 6
 - Installing DV Batteries ----- 6
 - Inserting SD/MMC Card ----- 6
- 6. **Taking Pictures** ----- 7
 - Taking a Picture ----- 7
 - Taking a Video ----- 7
 - Listening Music ----- 8
 - Using Voice Pen ----- 8
- 7. **Reviewing Pictures and Videos** ----- 9
 - Reviewing Pictures ----- 9
 - Reviewing Videos ----- 9
 - Deleting files ----- 9
- 8. **Customizing Your DV Settings** ----- 10
 - Capture Status Menu ----- 10
 - Playback Status Menu ----- 15
- 9. **Installing the Software** ----- 17
- 10. **Uninstalling the Software** ----- 17
- 11. **Downing Images to Your Computer** ----- 18
- 12. **ArcSoft PhotoImpression 5** ----- 19
- 13. **ArcSoft VideoImpression 2** ----- 20
- Appendix ----- 22
 - Specification ----- 22
 - FAQ ----- 24
 - Trouble Shooting ----- 25
 - Safety Precaution ----- 27

1. System Requirements

- Personal computer, laptop, desktop, or IBM compatible with Pentium 166 MHz minimum, and with an active USB (Universal Serial Bus) port.
- Windows 2000 / XP / Vista, CD ROM drive, color monitor, mouse and keyboard.
- Color printer for printing color pictures.
- For transferring still images via the Internet, or for video conferencing, your computer must have a modem and communication software for Internet connection.

2. Package Contents

Make sure that all of the items shown below are included with your DV.



3. Name of parts

1.FOCUS SWITH

🌸 Macro 👤 Normal ▲ Landscape

2.POWER (ON/OFF) BUTTON

3.STRAP EYELET

4.POWER CHARGE LAMP

5.POWER LAMP /INDICATOR LAMP

6. SPEAKER

7.SHUTTER/SNAP BUTTON

8.ZOOM OUT (⊖); ZOOM IN (⊕)

9.ARROW

OK BUTTON; ◀ LEFT BUTTON; ▶ RIGHT BUTTON; ▲ UP BUTTON; ▼ DOWN BUTTON

10.MODE BUTTON

11.MENU BUTTON

12.EARPOHNE JACK

13.USB PORT

14.TV OUT

15.TFT screen

16.MICROPHONE

17.LENS

18.FLASH

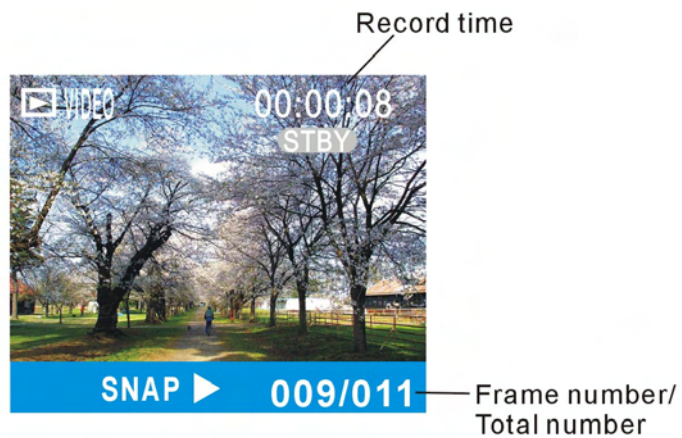
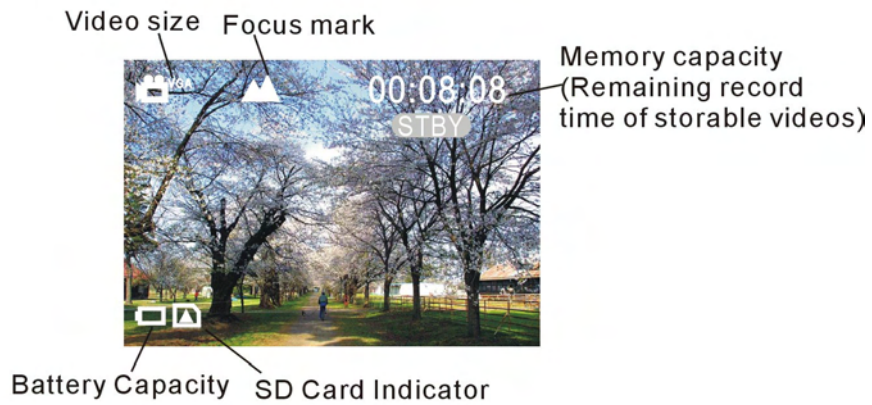
19.BATTERY COVER (SD SLOT IN IT)



4. Display Information

Video Mode

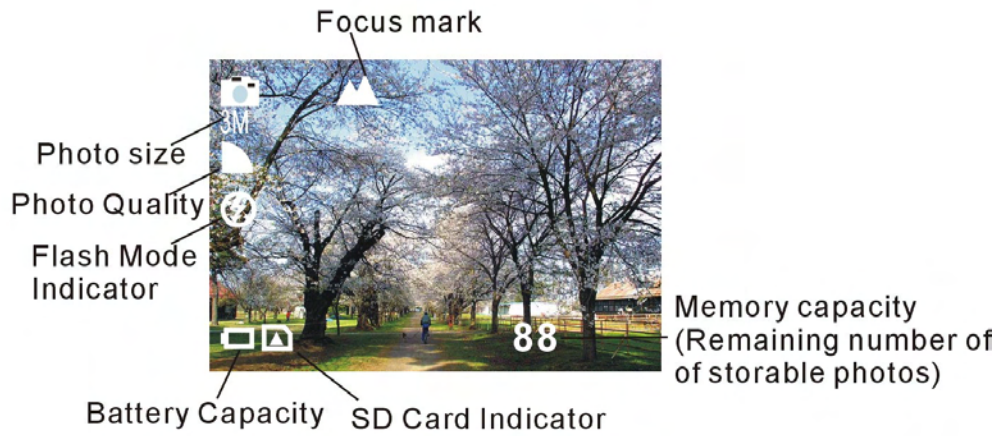
Capture Function



Playback Function

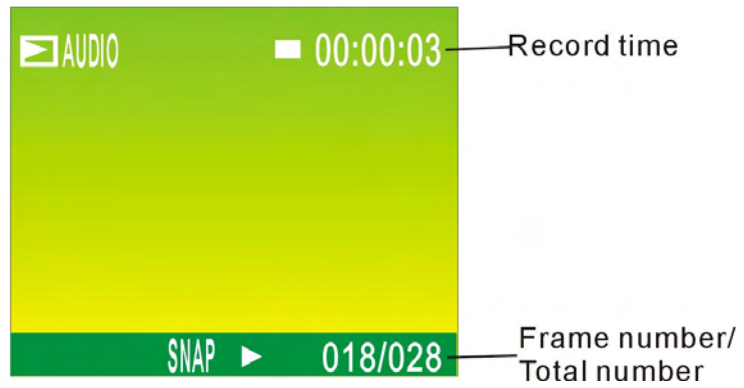
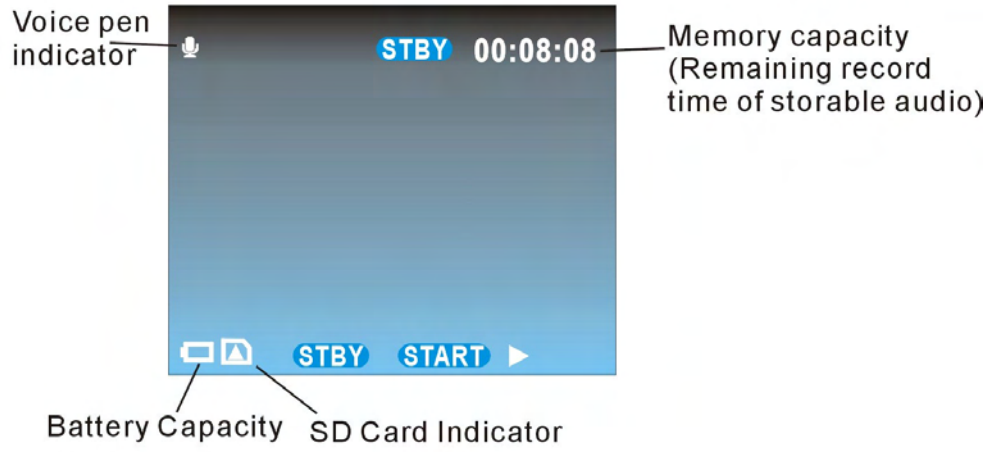
Photo Mode

Capture Function



Playback Function

Voice Pen



5. Getting Started

CAUTION

Please install the DV7 driver before using your DV7 with a PC.

The best way to transfer picture to the PC is using the Mass Storage mode to copy all your pictures.

• Installing DV Batteries:

1. Slide open the battery compartment cover by pressing the place as shown on the right side.
2. Insert four AAA-size alkaline batteries with positive (+) and negative (-) poles matching the directions indicated inside the battery cover.
3. Close the battery cover.



• Inserting SD/MMC Card:

This DV offers SD/MMC card for storing files:

SD Card - Optional SD cards provide removable, reusable storage for pictures and videos. Store as many pictures as you like, depending on the size of the card.

CAUTION:

- The card can only be inserted one way; forcing it may damage the DV or card.
Do not insert or remove a card when power is on.

1. Turn the DV off.
2. Position the card as shown. Push the card into the slot until it hooks up.
3. To remove the card gently push the card until it get released from the hooking mechanism. After it has popped out pull it out completely.




Note: 1. If the SD card is present in the DV and then the picture/ video will save in the SD card.

2. If the "CARD FULL !!!" warning message shows on the TFT screen, it means the SD card is full. Please remove the memory and insert a new one.


6. Taking Pictures

• Taking a Video

1. Turn on the DV by pressing the power button and then start screen appears.
2. The TFT screen will display  (default).
3. View the subject through the TFT screen.
4. Press the **shutter** button to take a video; Press the shutter button again to stop recording.

- Note:**
1. Use ◀ to change the video size; Use ▶ to adjust the white balance.
 2. During recording, user can press the zoom in or zoom out button for zoom in/out.
 3. The video resolution is VGA (640 X 480) and CIF (320 x240).
 4. Be careful not to contact the microphone while recording.
 5. The maximum length of an individual video clip depends on memory size. Use a higher capacity SD card will record longer movie clip.
 6. Video recording stops automatically when memory is full.
 7. Flash Strobe will be deactivated at this mode.

• Taking a Photo

1. Press the mode button once and you will see the icon  shows on the TFT screen.
2. View the objects through the TFT screen.
3. Press the shutter button to take the photo.

Note: 1. How to avoid the blurry shots? After pressing down shutter button, keep your hands steady

for about 2 seconds to get the best result.

2. Use ◀ to change the photo size; Use ▶ to adjust the white balance; Use ▲ to adjust the flash; Use ▼ to capture three continuous photos or take the photo in self-timer mode .


3. User can press the zoom in or zoom out button for zoom in/out.

Note: 1. The image will show grainier as the image is digitally zoomed.


2. Digital Zoom is automatically turned off when the photo or video is captured.

3.All white balance options will turn back default settings when the DV is turned off.

• **listening Music**

- 1.Press the mode button twice and you will see the icon  shows on the TFT screen.
- 2.Press the ok button to play/pause the music; press zoom in or zoom out button to adjust volume.
- 3.Press the menu button to stop playing and then press mode button to switch to voice pen mode.

• **Using voice pen**

- 1.Press the mode button three times and you will see the icon  shows on the TFT screen.
- 2.Press the shutter button to record voices; press the shutter button again to stop recording.

7. Reviewing videos/photos/voice

Press the ok button to enter playback mode and you will see the videos/photos/voice in thumbnail mode. When you use ◀ ▶ (to jump previous/next file) or ▲ ▼ (to jump previous/next page) to select the file, the file type will show on the left-up corner. Just press the ok button to view the file in the whole TFT screen, at this time you can use ◀ ▶ to select next file. Press the ok button again to return to thumbnail mode. Press the mode button to exit playback mode.

1. Reviewing Videos (MPEG4)

Press the shutter button to play/pause the playing; press the menu button to stop video playing and then press the mode button to exit reviewing mode.

2. Reviewing Photos (JPG)

In this mode you can use zoom in and zoom out buttons to zoom the photo. And then press the ok button, you will see four yellow arrows show on the TFT screen, press ▲ ▼ ◀ ▶ view different parts of the photo, press the ok button again to view the photo in original size.

3. Reviewing Voice (WAV)

Press the shutter button to play/pause the playing; and then press the mode button to exit reviewing mode.

• Deleting files

When in playback status, you can press the menu button to active the playback menu. Press the ▲ or ▼ button to select the icon 🗑️ and you will see the icon in blue, this time press the ok or ▶ button to enter the submenu, press the ▲ or ▼ button to select erase one or erase all (The selected one in blue ground). Then press the ok button to confirm. You will see a dialogue box. Use ◀ ▶ button to select ok or cancel option (The selected one in red ground). After select the option, press the ok button to confirm. Then press the mode button to exit the playback mode.

8. Customizing Your Camera Settings

* Capture Status Menu

[MENU BUTTON]

When user in video/photo mode. Press the **Menu** button can turn ON/OFF function menu. Use ▲ and ▼ buttons to select items, press the ok button or ► to enter each item. Use ▲ and ▼ to select the item, press the ◀ button to return to sub menu, press the ok button to confirm the setting. Press the mode button to return to capture status.

[Video mode]

[video format]

You can change the video size (excluding videos) settings to suit your purpose.

VGA (Large)	640 x 480 pixels	for big picture size; produces higher picture resolution and large file size.
CIF (Small)	320 x 240 pixels	for small video size; produces lower picture resolution and small file size.






[Exposure Value]

Exposure compensation allow you change the exposure setting manually to adjust for the lighting of your subject. This feature helps to improve better results when recording a backlit subject, a strongly lit subject indoors, or a subject that is against a dark background.

- The settings can be adjusted in 1/2 steps within the range -2EV ~ +2EV.
- You can check the result of the compensation by viewing the image on the LCD monitor.

[White Balance]

When the white balance is set to match the light source, the camera can take picture more accurately.

	Auto	The camera sets the white balance automatically according to shooting conditions.
	Daylight	Use when shooting at outdoors in sunlight on a clear day.
	Cloudy	Use when shooting at outdoors and the sunlight is not enough such as under cloudy skies, in shade or at dusk.
	Tungsten	For recording under tungsten fluorescent lighting.
	Fluorescent	For recording under fluorescent lighting.

 **[Photo mode]**

 **[Size]**

You can change the video size (excluding videos) settings to suit your purpose.

7M (Large)	3072x2304 pixels	for enlarged picture size; produces higher picture resolution and larger file size.
5M (Large)	2592x1944 pixels	for standard picture size; produces normal picture resolution and middle file size.
3M (Medium)	2048x1536 pixels	for small picture size; produces lower picture resolution and smaller file size.
2M (Small)	1600x1200 pixels	for smallest picture size; produces lowest picture resolution and smallest file size.

 **[Quality]**

Normal	Setting the photo quality to normal. (Small file size)
Fine	Setting the photo quality to standard. (*)
Best	Setting the photo quality to fine. (Bigger file size)

 [Camera mode]

Single	Taking one photo at one time.
Continue	Taking three photos at one time.
Self – 3S	Setting the timer in self-timer mode to 3 seconds.
Self – 5S	Setting the timer in self-timer mode to 5 seconds.
Self – 10S	Setting the timer in self-timer mode to 10 seconds.






 [Exposure Value]

Exposure compensation allow you to change the exposure setting manually to adjust for the lighting of your subject. This feature helps to improve better results when recording a backlit subject, a strongly lit subject indoors, or a subject that is against a dark background.

- The settings can be adjusted in 1/2 steps within the range $-2EV \sim +2EV$.
- You can check the result of the compensation by viewing the image on the LCD monitor.

 [White Balance]

When the white balance is set to match the light source, the camera can take picture more accurately.

	Auto	The camera sets the white balance automatically according to shooting conditions.
	Daylight	Use when shooting at outdoors in sunlight on a clear day.
	Cloudy	Use when shooting at outdoors and the sunlight is not enough such as under cloudy skies, in shade or at dusk.
	Tungsten	For recording under tungsten fluorescent lighting.
	Fluorescent	For recording under fluorescent lighting.



[Date Stamp]

ON	Printing the date on the photo.
OFF	Do not print the date on the photo.



[Color Mode]

Normal	Setting the photo color mode to normal. (*)
Black&White	Setting the photo color mode to black&white.
Classic	Setting the photo color mode to classic.

[Setup] Settings

When user in video/photo mode. Press the **Menu** button can turn ON/OFF function menu. Use ◀ or ▶ buttons to enter setup menu, use ▲ and ▼ buttons to select items, press the ok button or ▶ to enter each item. Use ▲ and ▼ to select the item, press the ◀ button to return to sub menu, press the ok button to confirm the setting. Press the menu button to return to capture status.



[Beeper]

BEEP ON	Setting the beep sound to on. (*)
BEEP OFF	Setting the beep sound to off.



[Date]

Use ▲ and ▼ buttons to adjust the date; Use ◀ or ▶ buttons to advance to next setting.

 [Time]

Use ▲ and ▼ buttons to adjust the time; Use ◀ or ▶ buttons to advance to next setting.

 [Video Out]

NTSC	Setting the TV Output to NTSC.
PAI	Setting the TV Output to PAL.

 [Format]

To format the flash memory or SD card.

 [Reset] [Frequency]

50HZ	Setting the flicker frequency to 50 Hz.
60HZ	Setting the flicker frequency to 60 Hz.

 [Power Saving]

The DV will power off if you do not do any operation at the following times.

1MIN	Setting the camera automatically powers off approximately 1 minute.
3MIN	Setting the camera automatically powers off approximately 3 minutes.
5MIN	Setting the camera automatically powers off approximately 5 minutes.
Off	Setting the camera always on after turning on the camera.

ENG
サホ [Language]

ENGLISH	Setting the language to English. (*)
HOLLÀNDISCH	Setting the language to Dutch.
FRANÇAIS	Setting the language to French.
ITALIANO	Setting the language to Italian.
ESPAÑOL	Setting the language to Spanish.
PORTUGUÊS	Setting the language to Portuguese.
한국어	Setting the language to Korean.
日本語	Setting the language to Japanese.



[USB Mode]

USB mode	You can download the pictures in the camera to your computer. (*)
Direct print	You can print directly to USB port printer. Only available at playback mode.

Please do not connect the USB cable with the direct printer until you choose Direct print mode.



[Version]

*** Playback Status Menu**

[MENU BUTTON]

When user in video/photo/voice pen mode. Press the **OK** button to enter playback mode. Then press the menu button can turn ON/OFF function menu. (If you press ◀ or ▶ first, you will switch to advance setting) Use ▲ and ▼ buttons to select items, press the ok button or ▶ to enter each item. Use ▲ and ▼ to select the item, press the ◀ button to return to sub menu, press the ok button to confirm the setting. Press the mode button to return to playback status.

 [Erase]

Delete item allow user to erase current or all the stored images from the memory.

Erase One	to erase current file.
Erase All	to erase all files.

 [Slide Show]

Cancel	to cancel the slide show.
2 SEC	To set 2 seconds slide show.
5 SEC	To set 5 seconds slide show.

 [Print]

Select	to print the current file.
All	to print all files.

9. Installing Your Software

• Installing Software

1. Insert installation CD into the CD-ROM drive and the installation CD menu should appear.
2. When you see the following screen, choose **“ArcSoft Software Suite”** to install the software.
3. Follow the instructions on screen.
4. Installed software will automatically create **“VideoImpression 2”** or **“PhotoImpression 5”** icon on your desktop.



10. Uninstalling Software

The following instruction will guide you to uninstall (remove) software from computer.

• Uninstalling Software

1. Click "Start" from the task bar and choose "Settings" -> "Control Panel". (For Windows XP: "Start" -> "Control Panels")
2. Double click "Add/Remove Programs".
3. Select the program to be uninstalled: "ArcSoft Software Suite".
4. Click on "Remove Program" (For Windows 2000/XP: Change /Remove") and then "OK".

11. Downloading Images to Your Computer

1. Turn the DV and computer on, then connect the DV to the computer with the included USB cable.
2. "USB Mass Storage drive" appears on the computer screen.

For Windows XP / Vista:

A dialogue box with options appears as shown on the right side.

The options are Play, Find/Fix/Share Images.

Open folders to view files, take no action,

Copy images to a folder on my computer,

View a slide show of images, and etc.

Please select one of them and click on "OK".

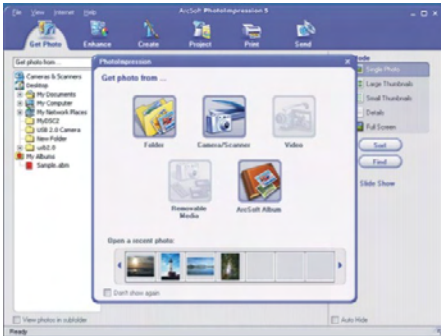


For Windows 2000/ME/98:

Double click on "My computer", and then double click on Removable Disk (i:) in the DCIM files. (All the photos and videos are stored here).

3. Press "Ctrl+A" on the keyboard to choose all the photos/videos, then press "Ctrl+C" to copy photos, and then open a file in the computer, press "Ctrl+V" to paste the photos.

12. ArcSoft PhotoImpression 5



ArcSoft PhotoImpression 5 is a complete digital image editing application designed with real people in mind. Easy-to-use “Getting Start” guides, user-friendly UI, complete image editing functionality, give users wonderful experience to organizing, viewing, enhancing, editing, printing and sharing photos.

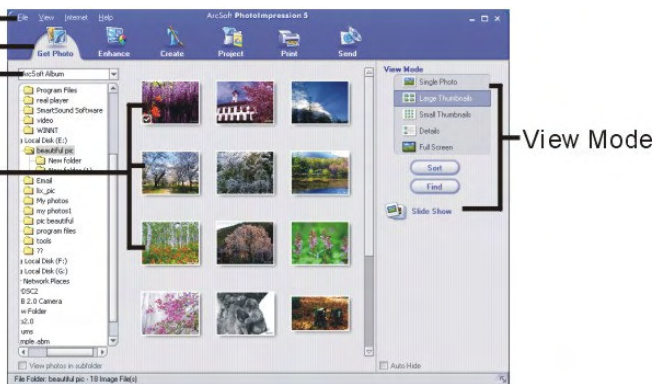
Click “Start” → “Program” → “ArcSoft Software Suite” → “PhotoImpression 5” to launch PhotoImpression 5 or double click PhotoImpression 5 icon on the desktop and you will see a window as the screenshot above.

Select the picture source. For example: Click “Folder”  for acquiring photos from your computer. Select the file path. You can start editing them.

Function Menu
Function Tab

Folder/Albums

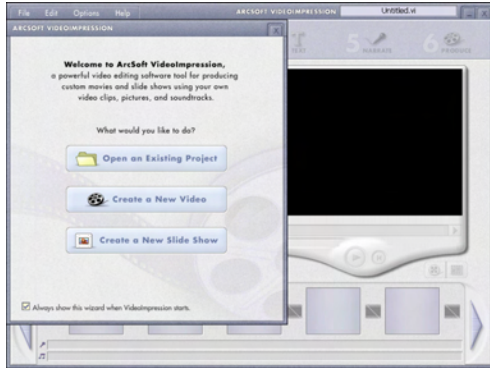
Browse panel



1. **Get Photo** – Choose how to view or acquire photos.
2. **Enhance** – Crop, brighten, rotate, resize and modify photos.
3. **Create** – Add clip art, special effects, frames and more.
4. **Project** – Make calendars, photo books and greeting cards.
5. **Print** – Print multiple images per page and multiple pages at one time.
6. **Send** – Email photos or upload them to online photo sharing accounts.

Note: For more detailed information, please refer to the **Help** of the program.

13. ArcSoft VideoImpression 2



ArcSoft VideoImpression 2 creates home movies and slide shows by combining existing videos, still images, exciting scene transitions, and multiple audio tracks. Though simple to use, the program provides intense and broad video editing and export options perfect for owners of digital still DVs, desktop and digital video DVs, and camcorders.

Click “Start”→ “Program”→ “ArcSoft Software Suite”→ “VideoImpression 2” to launch VideoImpression 2 or double click VideoImpression 2 icon on the desktop and you will see a window as the screenshot above.

Open a Project – Let you browse the project files in the VideoImpression system folder. By “project,” we mean to say a file that contains all of the

settings and each individual component on the Storyboard. When you save your work as a project, you can go back and swap components, add and remove them, alter audio, etc.

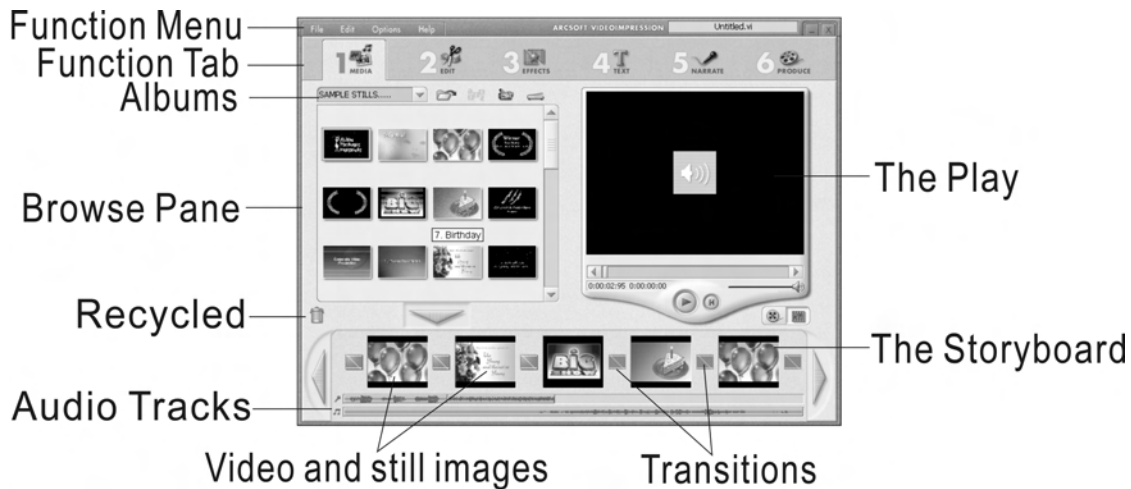
Create a Video – Create a new video project. You can retrieve media materials from the device connected or choose media files from system folder. You can choose video materials from your photo album as well.

Create a Slide Show – Create a slide show project. You can retrieve media materials from the device connected or choose media files from system folder. You can choose slide show materials from your photo album as well.

If the box “Always show this wizard when VideoImpression starts.” at the bottom of the wizard is checked, the wizard will appear each time you run the program. If you'd like to skip the wizard the next time, uncheck the box.

Select the item you desire and the picture and videos you need then you will enter the editing interface as below.

You can use the six steps in the Function Menu to create video clips and slide shows.



1. **Media** - Select the videos and images that will comprise your final movie or slide show.
2. **Edit** - Modify video and image color and adjust the duration of each movie component. Only available for video projects.
3. **Effects** - Add neat special effect transitions between each component, or apply a pre-made theme.
4. **Text** - Place animated text on any movie component. Only available for video projects.
5. **Narrate** - Record audio directly from the program and add it to your movie.
6. **Produce** - Combine all components to create your final video; save it in a variety of ways or email it to friends.

The Storyboard - The backbone of the creation process, it's where you assemble your movie.

The Player - Preview and modify your movies in this area.

Working with Albums - Albums let you organize your media for easy access.

Note: For more detailed information, please refer to the **Help** of the program.

Appendix:**Specifications**

Camera Mode	DV mode; Still mode; Playback mode; SD/MMC card reader; Voice recoder; Mass storage
Image Sensor	5M(2592x1944) CMOS sensor
Lens Module	Fixed lens · F2.8 · EFL = 6.45mm
Focus range	Macro : 16cm; Portrait : 0.5m~1.1m; Landscape : 1.0~Infinity
MPEG 4	640 x 480 pixels 30 frames/sec (Approx. 11 minutes with 64MB SD card.) 640 x 480 pixels 15 frames/sec (Approx. 22 minutes with 64MB SD card.) 320 x 240 pixels 30 frames/sec (Approx. 34 minutes with 64MB SD card.) 320 x 240 pixels 15 frames/sec (Approx. 68 minutes with 64MB SD card.)
White Balance	Auto / Sunny / Tungsten / Fluorescent / Cloudy
EV compensation	Automatic / Manual (-2EV to +2EV in 1/2 EV steps)
Preview digital zoom	8x
Still Image Resolution	7M : 3072 x 2304 5M : 2592 x 1944 3M : 2048 x 1536 2M : 1600 x 1200
Image Quality	BEST; FINE; NORMAL
Burst mode	3 pictures per shot
Self-timer delay	10 /15/20 seconds
Picture Effects	Color (Normal); Black & White; Sepia °
White Balance	Auto / Sunny / Tungsten / Fluorescent / Cloudy
EV compensation	Automatic / Manual (-2EV to +2EV in 1/2 EV steps)
Still image format	JPEG (DCF, Exif2.1)
MP3 play	YES
Voice recorder	YES
Image Play (playback mode)	Single Image; Thumbnails; Slide Show, Movie player(Support to ASF,DivX,AVI,MOV)
DPOF (Digital Print Order Format)	Print reserve (single, all, number of copies), All print Date/time
Picture direct print Function	YES

Specifications

Delete	One / All / Select
Playback digital zoom	8x
ISO Speed	Auto
Shutter Speed	Electronic : 1/8-1/4000 sec
Color LCD Display	TOPPLY 2.0 " LTPS; Resolution :558(H) x 234(V)
Storage system	32M Internal Flash Memory External: SD or MMC Card
Mass Storage	YES
Anti-Flicker	50/60 Hz
Flash mode	SCR (Auto / force / off)
Flash distance	1m~2.0m
Flash Charging Time	Approx. 8 sec. At normal temperature with fully charged battery
RTC	YES
Microphone	YES
Speaker	YES
PC Interface	USB 2.0
TV out	NTSC / PAL
Audio out	YES
Power	Battery: 4xAAA battery Auto power off: Can be selected : 1 / 3 / 5 minute. Battery life : (600/ still pic. w/o strobe; 250/still pic. with strobe)TBD
LED Indicator	(1) Red blinking: Flash charge (2) Green: Ready / Busy / Power
Language	English; Germany; French; Italian; Spanish; Portuguese; Korean; Chinese; Spanish

FAQ

Q1: I have noticed that the pictures I have taken are all very dark. How can I make these pictures lighter? Should I use the flash often?

A1: Avoid taking pictures in places with little lighting. When it is cloudy, please use other means to create more light before taking pictures. We recommend using the flash function during nighttime. During the day, the flash may be too strong and the picture may come out too bright, thus use it only during the night.

Q2: After I am done taking a picture, it takes a while for the picture to come up on the TFT screen. Is there something wrong with my DV?

A2: No, with the DV, if you select a larger picture size, it will take longer for it to come up on the TFT screen. So if you want to speed things up, please select a smaller picture size. (M picture size is recommend)

Troubleshooting

Problem	Source	Solution
The DV is not running	The power is not on	<ul style="list-style-type: none"> • Slide the ON/OFF button to turn the DV on.
	The batteries were not inserted properly	<ul style="list-style-type: none"> • The correct direction to insert the AA batteries is indicated on the DV.
	Batteries are depleted	<ul style="list-style-type: none"> • Replace with unused alkaline or fully recharged batteries (four AA-size batteries).
	The battery cover is not closed properly	<ul style="list-style-type: none"> • Close the cover correctly and securely.
The DV is not taking pictures.	The DV is in the Playback Function status	<ul style="list-style-type: none"> • Press the OK button to enter playback status.
	The flash is charging	<ul style="list-style-type: none"> • Wait until the flash charges. You can press the shutter button when the indicator glows a steady orange.
	The SD card or internal memory is already full	<ul style="list-style-type: none"> • Obtain a new SD card and insert it. • Download images to your computer, and then erase them from the card or format to free up more space.
	The SD card is not formatted correctly	<ul style="list-style-type: none"> • Ask SD card manufacturer for assistance.

Problem	Source	Solution
Picture is not clear	The lens is dirty	<ul style="list-style-type: none"> • Clean the lens.
The pictures are blurred	Hands were not steady when taking the picture	<ul style="list-style-type: none"> • Ensure hands are steady when taking picture and remain steady one second after pressing the shutter button.
	The picture subject was not in the focus range of the DV	<ul style="list-style-type: none"> • Keep a minimum distance of 60 inches between the picture subject and the DV lens to stay in the focus range of the DV.
The flash doesn't fire	The flash mode is set to Off	<ul style="list-style-type: none"> • Set the flash to any other mode except Off.
The computer cannot communicate with the DV	DV power is off	<ul style="list-style-type: none"> • Turn on the DV.
	USB cable is not securely connected	<ul style="list-style-type: none"> • Connect cable to DV and computer port.
The PC DV doesn't work	DV power is off	<ul style="list-style-type: none"> • Turn on the DV.
	USB cable is not securely connected	<ul style="list-style-type: none"> • Connect cable to DV and computer port.
	Driver is not installed	<ul style="list-style-type: none"> • Install the DV driver.

Safety Precautions

Precautions for The DV

1	Do not shoot while driving or walking, otherwise it may cause traffic accident.
2	Do not trigger the flash in close proximity to human or animal eyes.
3	Expose to the intense light produced by the flash may damage eyesight, especially for young children, please shoot at least one meter (39 inches) away when using the flash.
4	Do not use the viewfinder to compose the sun or other intense light sources that could damage your eyesight.
5	Don not allow the DV to come into contact with, or became immerse, water or other liquids when using the DV, otherwise it may result in fire or electrical shock.
6	Do not use DV in rain, snow, and at seaside, pond, and bathroom.
7	Turn off the DV immediately if it emits smoke or noxious fumes, and then keep away from the DV.
8	Do not take pictures on the plane or any other places where taking picture is forbidden, otherwise it will lead to accident.
9	Do not attempt to modify this DV in anyway. This may cause a fire, electronic shock or severe damage to the DV.
10	Please do not use this product in close proximity to flammable or explosive gases as this could increase the risk of explosion.
11	Do not swallow batteries or small DV accessories.
12	Do not insert or drop metallic or inflammable foreign objects into the DV through access points, e.g. card slot and battery chamber. This may cause a fire or electronic shock.

13	Do not operate this DV with wet hands. This could pose a risk of electronic shock.
14	Under the environment with electrostatic discharge, the DV may malfunction and require the user to reset the DV.
15	Under the environment with electrical fast transient (EFT), the DV may lose function and require user to reset the DV.
16	Shield cables must be used with unit to ensure complies with the Class B FCC limits.
17	It is normal that the temperature of the DV body rises after being in use for a long period.
18	Do not leave the DV in places subject to extremely high temperature, such as in a sealed vehicle, under direct sunlight, or in other places with extremely variances in temperature. Exposure to extremely temperature may adversely affect the DV's internal components and could cause a fire.
19	Always use the DV and its accessories in a well-ventilated area.
20	Allowing dust to accumulate in the DV over a long period of time is hazardous and in extreme prior to seasonal periods of high humidity.

Free Manuals Download Website

<http://myh66.com>

<http://usermanuals.us>

<http://www.somanuals.com>

<http://www.4manuals.cc>

<http://www.manual-lib.com>

<http://www.404manual.com>

<http://www.luxmanual.com>

<http://aubethermostatmanual.com>

Golf course search by state

<http://golfingnear.com>

Email search by domain

<http://emailbydomain.com>

Auto manuals search

<http://auto.somanuals.com>

TV manuals search

<http://tv.somanuals.com>