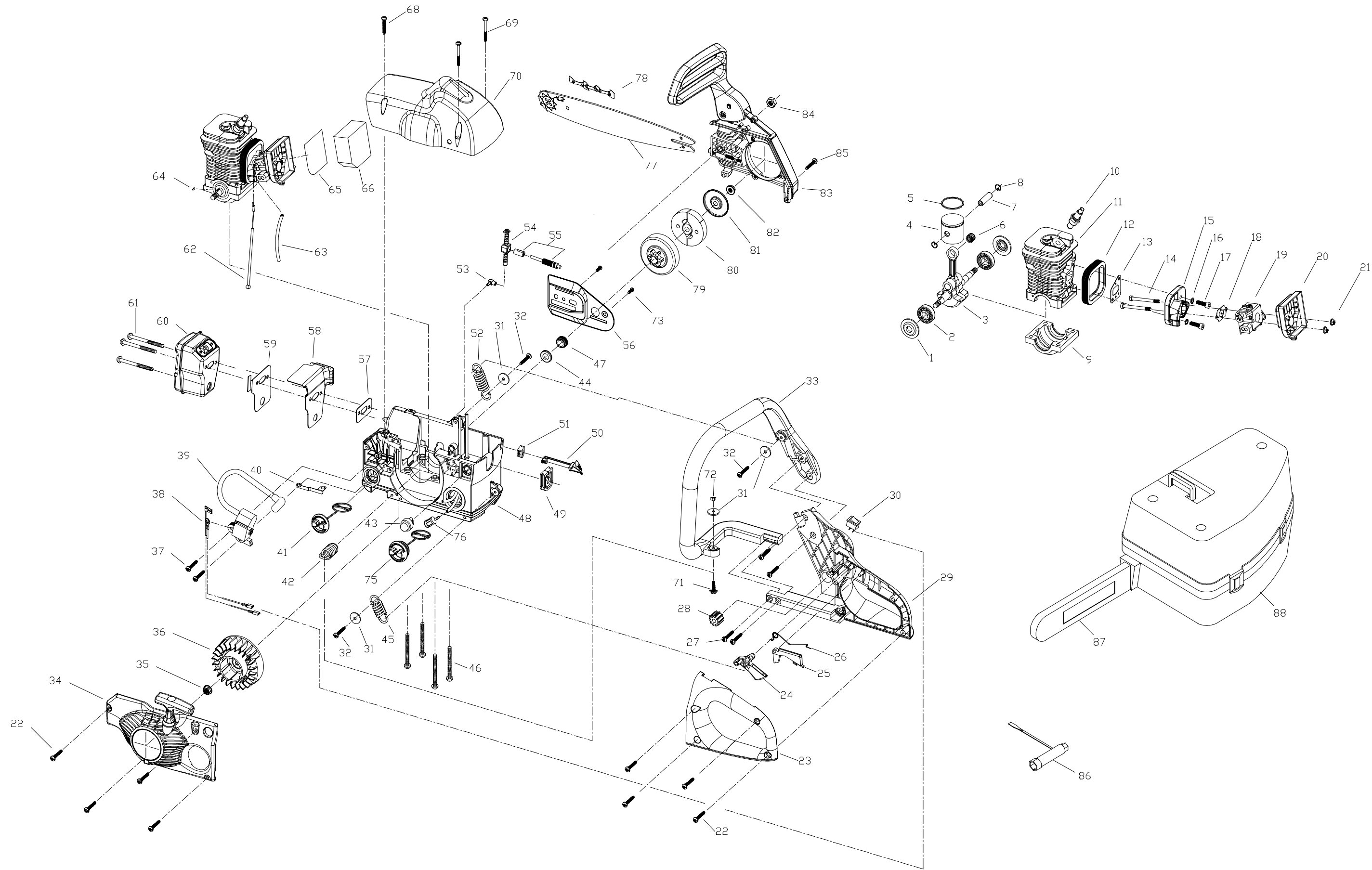




# SERVICE SPARE PARTS LIST

|  |                                 |
|--|---------------------------------|
| <b>SPECIFY MODEL NO. WHEN ORDERING PARTS</b> |                                 |
| <b>42CC 18" GAS CHAIN SAW</b>                |                                 |
| <b>MODEL NO.</b>                             | <b>MS1842AVCC / 41AY82AR777</b> |

|                   |                     |             |
|-------------------|---------------------|-------------|
| <b>DATE</b>       | <b>REVISED DATE</b> | <b>PAGE</b> |
| <b>11/16/2004</b> | <b>N/A</b>          | <b>1/2</b>  |





## SERVICE SPARE PARTS LIST

|  |                                 |                   |                     |             |
|--|---------------------------------|-------------------|---------------------|-------------|
| <b>SPECIFY MODEL NO. WHEN ORDERING PARTS</b> |                                 | <b>DATE</b>       | <b>REVISED DATE</b> | <b>PAGE</b> |
| <b>42CC 18" GAS CHAIN SAW</b>                |                                 | <b>11/16/2004</b> | <b>N/A</b>          | <b>2/2</b>  |
| <b>MODEL NO.</b>                             | <b>MS1842AVCC / 41AY82AR777</b> |                   |                     |             |

| No. | STK CODE | JFT Parts No.        | Description          | Q | No. | STK CODE | JFT Parts No.       | Description           | Q | No. | STK CODE | JFT Parts No.      | Description     | Q |
|-----|----------|----------------------|----------------------|---|-----|----------|---------------------|-----------------------|---|-----|----------|--------------------|-----------------|---|
| 1   | B        | MC-9157-310502       | CAP, BEARING         | 2 | 30  | A        | MC-9022-310501      | SWITCH                | 1 | 59  | C        | MC-9082-310501     | BAFFLE          | 1 |
| 2   | A        | MC-9DB-620101        | BEARING              | 2 | 31  | B        | MC-9WFB-05-21       | WASHER                | 4 | 60  | C        | MC-9228-310519     | MUFFLER ASS'Y   | 1 |
| 3   | A        | MC-9228-310505       | CRANK/ROD ASS'Y      | 1 | 32  | B        | MC-9SKKBY8/16-0.625 | SCREW                 | 4 | 61  | B        | MC-9SXDB-06-70     | SCREW           | 3 |
| 4   | B        | MC-9290-310502       | PISTON               | 1 | 33  | C        | MC-9068-310503      | HANDLE, FRONT         | 1 | 62  | B        | MC-9010-310502     | CABLE, THROTTLE | 1 |
| 5   | B        | MC-9189-310502       | RING, PISTON         | 2 | 34  | C        | MC-9228-310502      | STARTER HOUSING ASS'Y | 1 | 63  | B        | MC-9129-310504     | FUEL PIPE       | 1 |
| 6   | A        | MC-9NB-K101410       | ROLLER, PISTON       | 1 | 35  | B        | MC-9NAB-5/16-24     | NUT                   | 1 | 64  | A        | MC-9221-310001     | WOODRUFF KEY    | 1 |
| 7   | A        | MC-9PC-10-34.5       | PIN, PISTON          | 1 | 36  | B        | MC-9169-310501      | FLYWHEEL              | 1 | 65  | B        | MC-9183-310502     | MESH            | 1 |
| 8   | B        | MC-9CA-10.3          | RING                 | 2 | 37  | B        | MC-9SKKBY8/16-0.75  | SCREW                 | 2 | 66  | A        | MC-9252-310501     | FILTER, AIR     | 1 |
| 9   | C        | MC-9072-310501F      | CASE, CRANK          | 1 | 38  | A        | MC-9010-310503      | WIRE ASS'Y            | 1 | 68  | B        | MC-9SKKBY-8/16-1   | SCREW           | 1 |
| 10  | A        | MC-9295-310502       | SPARK PLUG           | 1 | 39  | C        | MC-9288-310501-CH   | IGNITION ASS'Y        | 1 | 69  | B        | MC-9SKKBY8/16-1.4  | SCREW           | 2 |
| 11  | C        | MC-9292-310501F      | CYLINDER             | 1 | 40  | B        | MC-9051-310501      | CONDUCTIVE PLATE      | 1 | 70  | C        | MC-9017-310509     | SHROUD          | 1 |
| 12  | B        | MC-9012-310502       | RUBBER, ISOLATOR     | 1 | 41  | A        | MC-9228-310207      | OIL CAP ASS'Y         | 1 | 71  |          | MC-9SKKBY05-18     | SCREW           | 1 |
| 13  | B        | MC-9082-310505       | SPACER               | 1 | 42  | B        | MC-9228-310514      | SPRING ASS'Y          | 1 | 72  |          | MC-9NAB-05         | NUT             | 1 |
| 14  | B        | MC-9STDB-05-60       | SCREW                | 2 | 43  | A        | MC-9142-310002      | PRIMER                | 1 | 73  | B        | MC-6SDABB04-08     | SCREW           | 2 |
| 15  | C        | MC-9082-310504       | ISOLATOR, CARBURETOR | 1 | 44  | B        | MC-9157-310501      | FELT                  | 1 | 75  | C        | MC-9228-310206     | FUEL CAP ASS'Y  | 1 |
| 16  | B        | MC-6WSB-06           | SPRING WASHER        | 2 | 45  | B        | MC-9024-310506      | SPRING                | 1 | 76  | A        | MC-9182-310503     | FILTER          | 1 |
| 17  | B        | MC-9SACB-06-25       | SCREW                | 2 | 46  | B        | MC-9SFAB-06-55      | SCREW                 | 4 | 77  | A        | MC-9040-310512     | BAR             | 1 |
| 18  | B        | MC-9082-310506       | SPACER               | 1 | 47  | B        | MC-9073-310503      | WORM                  | 1 | 78  | A        | MC-6220-210805     | CHAIN           | 1 |
| 19  | C        | MC-9287-310501       | CARBURETOR           | 1 | 48  | C        | MC-9228-310511      | HOUSING ASS'Y         | 1 | 79  | C        | MC-9228-310515     | DRUM ASS'Y      | 1 |
| 20  | B        | MC-9228-310510       | AIR FILTER ASS'Y     | 1 | 49  | C        | MC-9012-310503      | HOLDER, CABLE         | 1 | 80  | C        | MC-9228-310528     | CLUTCH ASS'Y    | 1 |
| 21  | B        | MC-9NHZ-05           | NUT                  | 2 | 50  | B        | MC-9114-310510      | LEVER, CHOKE          | 1 | 81  | C        | MC-9077-310501     | CAP, ANTI-DUST  | 1 |
| 22  | B        | MC-9SGKBY10/14-0.625 | SCREW                | 8 | 51  | B        | MC-9012-310504      | HOLDER, CHOKE LEVEL   | 1 | 82  | B        | MC-9NHC-09         | NUT             | 1 |
| 23  | C        | MC-9068-310501       | HANDLE, LEFT PART    | 1 | 52  | B        | MC-9024-310507      | SPRING                | 1 | 83  | C        | MC-9228-310501     | BRAKE KIT ASS'Y | 1 |
| 24  | A        | MC-9028-310502       | TRIGGER, THROTTLE    | 1 | 53  | B        | MC-9124-310102      | CONNECTOR             | 1 | 84  | B        | MC-9NAZ-5/16-18    | NUT             | 1 |
| 25  | A        | MC-9028-310501       | TRIGGER, RELEASE     | 1 | 54  | A        | MC-9013-310501      | OIL PIPE              | 1 | 85  | B        | MC-9SGKBY10/14-0.6 | SCREW           | 1 |
| 26  | B        | MC-9024-310504       | SPRING               | 1 | 55  | B        | MC-9228-310526      | PUMP ASS'Y            | 1 | 86  |          | MC-9042-310201     | WRENCH          | 1 |
| 27  | B        | MC-9SKKBY10/14-0.68  | SCREW                | 4 | 56  | C        | MC-9017-310508      | CAP, ANTI-DUST        | 1 | 87  |          | MC-9017-310213     | SCABBARD        | 1 |
| 28  |          | MC-9027-310101       | RUBBER               | 1 | 57  | B        | MC-9082-310507      | SPACER                | 1 | 88  |          | MC-9120-310201     | CARRY CASE      | 1 |
| 29  | C        | MC-9068-310502       | HANDLE, REAR         | 1 | 58  | C        | MC-9082-310502      | BAFFLE                | 1 |     |          |                    |                 |   |

Stocking Codes are:

A - Dealer stocked

B - Distributor stocked

C - Factory stocked

## Free Manuals Download Website

<http://myh66.com>

<http://usermanuals.us>

<http://www.somanuals.com>

<http://www.4manuals.cc>

<http://www.manual-lib.com>

<http://www.404manual.com>

<http://www.luxmanual.com>

<http://aubethermostatmanual.com>

Golf course search by state

<http://golfingnear.com>

Email search by domain

<http://emailbydomain.com>

Auto manuals search

<http://auto.somanuals.com>

TV manuals search

<http://tv.somanuals.com>