

# Bluetooth™ Wireless USB Adapter

---

*User Manual (GBU211 / GBU311)*





Thank you for purchasing one of the most feature-rich Bluetooth™ to USB adapters available. IOGEAR's Bluetooth™ to USB adapters are first-rate wireless connectivity accessories designed to help reduce the frustration of dealing with cable glut in your home or office. These adapters allow computers with USB connections to become Bluetooth™ enabled computers. They comply to Bluetooth 1.2 and USB 1.1 specifications, and provide users with a 723 Kbps data rate. They also enable wireless Personal Area Network (PAN) connectivity to Bluetooth™ enabled devices such as PDA's, printers, cellular phones, computers, etc.

We hope you enjoy using your IOGEAR Bluetooth™ to USB adapter, another connectivity solution from IOGEAR.

©2004 IOGEAR®. All Rights Reserved. PKG-M0127

IOGEAR, the IOGEAR logo, MiniView, VSE are trademarks or registered trademarks of IOGEAR, Inc. Microsoft and Windows are registered trademarks of Microsoft Corporation. IBM is a registered trademark of International Business Machines, Inc. Macintosh, G3/G4 and iMac are registered trademarks of Apple Computer, Inc. IOGEAR makes no warranty of any kind with regards to the information presented in this document. All information furnished here is for informational purposes only and is subject to change without notice. IOGEAR, Inc. assumes no responsibility for any inaccuracies or errors that may appear in this document.

## Table of Contents

Package Contents .....	02	- Pairing .....	46
Overview .....	03	- Use with Microsoft Bluetooth™ Stack .....	48
Features .....	05	Specification .....	52
Requirements .....	06	Technical Support .....	53
Introduction .....	07	Radio & TV Interference Statement .....	54
Installation .....	08	Limited Warranty .....	55
Initial Bluetooth™ Configurati .....	13		
Un-installation .....	21		
Re-installation .....	22		
Operation .....	23		
- Connect to a Cellular Phone .....	23		
- Connect to Network Access .....	32		
- Connect to a Printer .....	35		
- Connect to a PDA .....	38		
- Connect to a Mac .....	40		

## Package Contents

### **This package contains:**

#### **GBU211**

- 1 Bluetooth to USB adapter
- 1 Driver CD
- 1 Quick Start Guide
- 1 Warranty/Registration card

#### **GBU311**

- 1 Bluetooth to USB adapter
- 1 5' USB extension cable
- 1 Driver CD
- 1 User manual
- 1 Warranty registration card

### **The Bluetooth™ Installation CD contains the following:**

- Setup programs and drivers for Microsoft Windows 98 Second Edition (SE), Windows Millennium Edition (Windows Me), Windows 2000, and Windows XP
- README.TXT file with updated information about your Bluetooth™ Wireless USB Adapter
- Bluetooth™ Wireless USB Adapter User Manual

If any items are damaged or missing please contact your dealer.

## Overview

Bluetooth™ is a low-power wireless networking standard which uses short radio waves to allow electronic devices to communicate with each other without using cables.

The following applications are supported by Bluetooth™ technology:

- Synchronize your Bluetooth™ PDA with your computer.
- Send your business card to anyone who has a Bluetooth™ device.
- Send or receive files to or from anyone who has a Bluetooth™ enabled device.
- Chat with anyone who has a Bluetooth™ enabled computer.
- Play a one-on-one serial game without a cable.
- Send an e-mail without being wired to the network.
- Dial up to the Internet on your computer over your Bluetooth cellular phone.
- Send a fax from your computer over your Bluetooth™ cellular phone.

Most Bluetooth-enabled devices have the capability to act as:

- A **Bluetooth server** - these devices provide one or more services, such as access to the Internet, or to other Bluetooth devices.
- A **Bluetooth client** - these devices use the service(s) provided by Bluetooth servers.

Most Bluetooth devices that can act as both server and client, and can often do both at the same time.

### Overview Continued

Bluetooth™ technology is supported under the following operating systems.

- Windows 98SE (Client only)
- Windows ME (Client only)
- Windows 2000
- Windows XP
  
- Mac OS X 10.2.X (Apple only supports selected Bluetooth profiles.)

## Features

- Eliminates cables between your computers
- Controls and communicates with Bluetooth™ enabled devices
- Enables wireless Personal Area Network (PAN) connectivity
- Bluetooth™ specification 1.2 compliant
- USB specification 1.1 compliant
- Up to 20 meter (66 feet) wireless working distance for GBU211, up to 100 meter (330 feet) for GBU311 and GBU312
- Up to 723 Kbps data rate
- Small form factor makes it easy to carry and place
- Crisp, easy, and fast installation and setup
- Built-in security to assure the privacy of your communication – Pairing, Encryption, and Authentication
- PC and Mac compatible



### **System Requirement:**

- Notebook or desktop computers, with Pentium - Class PC, 200 Mhz CPU or higher, 128MB RAM or higher, and with at least one USB port
- Mac OS 10.2 or later
- Windows 2000, XP

Note: Windows 98SE & ME cannot be used as a server, and many Bluetooth™ devices are not compatible with 98SE & ME

## Introduction

IOGEAR®'s Wireless Bluetooth™ to USB Adapter is a Class 1 (for GBU311 and GBU312) device with a wireless working distance of 330 feet (100 meters). This device allows any computer with USB connections to become a Bluetooth™ enabled computer. It complies with Bluetooth 1.2 and USB 1.1 specifications, and provides users with a 723 Kbps data transfer rate at ranges up to 330 feet. It also enables wireless Personal Area Network (PAN) connectivity to Bluetooth™ enabled devices such as PDA's, printers, cellular phones, computers, etc.

The Wireless Bluetooth™ to USB adapter is compatible with both PC and Mac. It is easy to install and use, and very portable. Another great solution from IOGEAR® for home and mobile networking needs.

GBU211 is a class 2 device with a wireless working distance of 60 feet (20 meters).

1. Make sure that the IOGEAR Bluetooth™ Adapter is NOT plugged into the USB port of the computer. With the computer turned on and Windows 2000, or XP running (The support for 98SE and ME is limited), insert the IOGEAR Bluetooth™ Installation CD into the CD-ROM drive. The auto-start feature starts the installation. If auto-start is disabled on your computer, click Start>Run and type d:\setup.exe (d: being the CDROM drive).

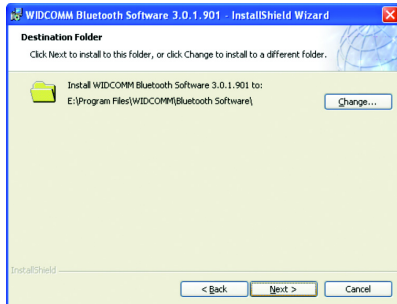
The IOGEAR Bluetooth InstallShield Wizard will appear. Click the [Next] button.

Note: If you have other Bluetooth software already installed, please uninstall it completely before installing the IOGEAR Bluetooth software on the CD.

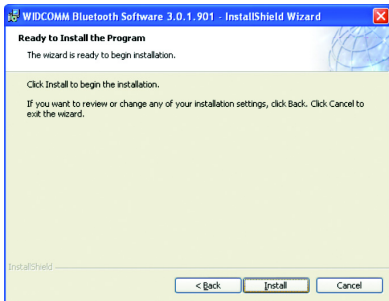


# Installation

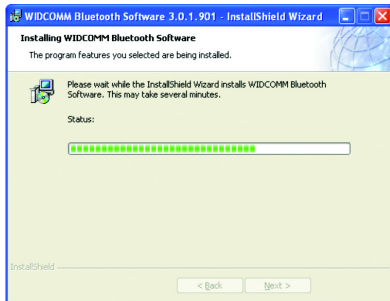
- Next the License Agreement screen will appear. Click the "I accept the terms in the license agreement" and click [Next].
- Click the [Next] button to accept the default destination installation folder or click the [Change] to choose the different installation folder.



4. Click the [Install] button to begin the installation

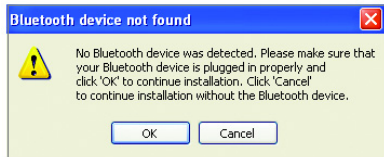


5. The installation may take a few minutes.



## Installation

6. A Driver Signature Notice may appear. Click the [OK] Button to continue the installation.
7. During the installation, a “Bluetooth™ device not found” window will appear. Please insert the Bluetooth to USB adapter into the available USB port of the computer, and then click OK.



8. Once the installation is complete, click the [Finish] button to complete the wizard. At this point, we recommend that you reboot the system.



## Initial Bluetooth™ Configuration Wizard

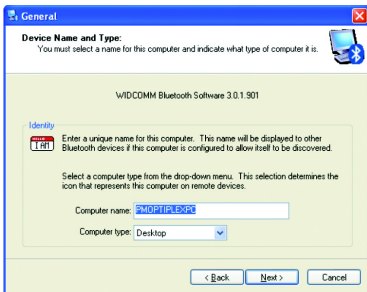
1. Now double click the Bluetooth™ icon in the system tray. This will start the “Initial Bluetooth Configuration Wizard.”
2. Once the Initial Bluetooth™ Configuration Wizard has started, click [Next]





## Initial Bluetooth™ Configuration Wizard

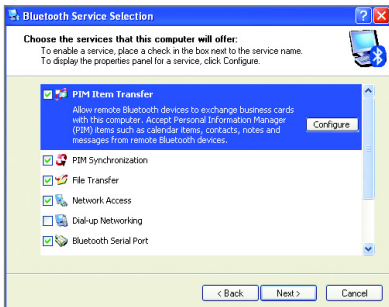
- Next, enter a unique name for this computer. This name will be displayed to other Bluetooth™ devices. Select a computer type from the drop-down menu and click [Next].
- Click next to configure the services this computer will offer to other Bluetooth™ devices.



## Initial Bluetooth™ Configuration Wizard

5. Choose the services that this computer will offer to other Bluetooth™ devices by placing a check in the box. To display the properties, click on the configure button. Click [Next] to proceed.

6. At this point, Windows will install the software necessary for the services you selected.



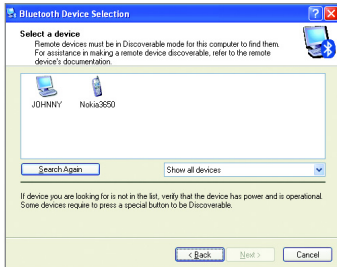
## Initial Bluetooth™ Configuration Wizard

7. Once Windows is finished installing the software, the following window will appear. This window will allow you to configure your computer to use the service of another Bluetooth Device. If you do not have any additional devices you wish to connect to at this time, click [Skip]. Click [Finish] on the final screen.



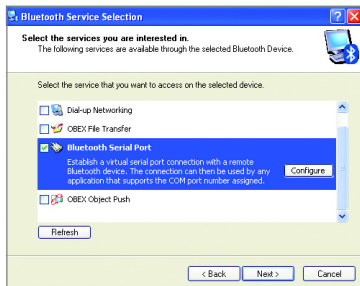
8. After the configuration, you can double click the Bluetooth icon to My Bluetooth Place, and search for the nearby Bluetooth devices

Note: If the desired device does not appear, click on the [Search Again] button.



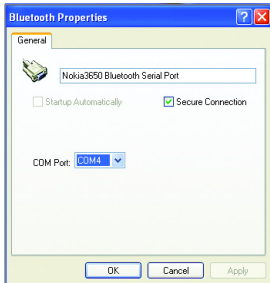
## Initial Bluetooth™ Configuration Wizard

- Next you will need to Pair your computer with the device you wish to connect to. Enter a PIN code for the device and click the [Initiate Pairing] button. If the device you are connecting to does not require a PIN click the [Skip Pairing] button.
- Next, the window will display the services available through the selected Bluetooth™ device. Check the box next to the service you want to access.



## Initial Bluetooth™ Configuration Wizard

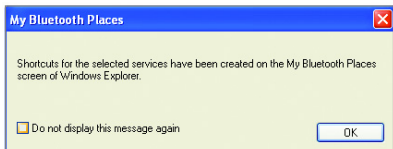
11. Once you check the box next to the service you wish to connect to, a properties window will appear. Click [OK] to continue.



12. Next, click [Finish] to proceed.

## Initial Bluetooth™ Configuration Wizard

13. A window will appear advising you that a shortcut has been placed on the My Bluetooth™ Places screen. Click [OK] to close the window.



14. If you have another Bluetooth™ device and you want to configure to allow this computer to use its services, click [Next]. Otherwise click [Skip].



## Initial Bluetooth™ Configuration Wizard

15. You have completed the Initial Bluetooth Configuration Wizard. Click [Finish] to complete the wizard



## Un-installation

1. With your IOGEAR® Bluetooth™ USB Adapter inserted in the computer, click ***Start > Settings > Control Panel***
2. Click on ***Add/Remove Programs***
3. Click on ***IOGEAR® Bluetooth™ Adapter*** and click on [Remove].
4. When the uninstall is complete, remove the **IOGEAR® Bluetooth™ Adapter**, and restart your computer



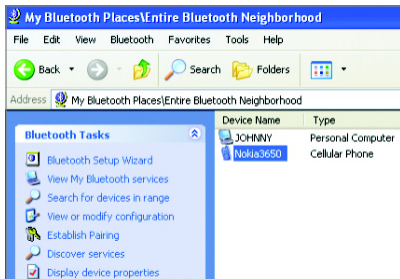
## Re-installation

Under normal circumstances, you will not need to re-install drivers for your IOGEAR® Bluetooth™ USB adapter; however, the need may arise if your hard drive is formatted. To re-install the drivers, please follow steps 1-13 in the installation section.

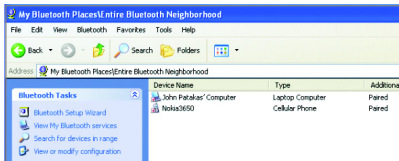
## Operation

### How to connect to a Cellular Phone (Bluetooth Enabled)

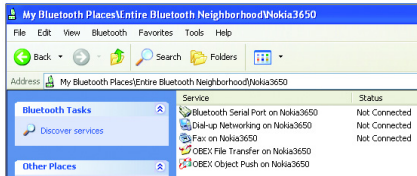
1. Double-click on the IOGEAR® Bluetooth™ icon in the system tray.
2. Next, click on Search for devices in range. As illustrated below, the Bluetooth-enabled cell phone is detected.



3. Right-click on the cell phone, and select Pair Device. When prompted for passkey, simply type any four digits and click OK. On the phone, you will also be prompted to enter a passkey. Make sure you enter the same passkey as on the computer. Your devices should now be paired.



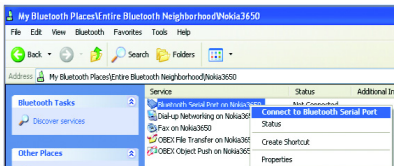
4. In our example, we used a Nokia 3650 cell phone. Double-click on the phone to see the available services. The services offered by your cell phone may depend on the features supported by your specific model and may or may not require additional software by the phone manufacturer.



In the case of Nokia phones, you can take full advantage of your Bluetooth phone by using the Nokia PC Suite software. Please check [www.nokia.com](http://www.nokia.com) to see the version of the software supported by your Nokia phone. Once you have the Nokia PC Suite software installed on your system, please proceed with the instructions below.

## Operation

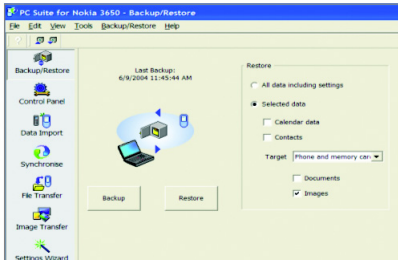
- In order for the Nokia PC Suite software to detect the Bluetooth phone, we need to first have a Bluetooth Serial Port communication established. Therefore, right-click on the Bluetooth Serial port service and connect to it as illustrated below. You may be asked to authorize the connection or enter a passkey, enter the necessary information to proceed.
- When you establish a connection, the Bluetooth icon will turn green, as shown below. At this point, you can now launch the Nokia PC Suite software.



In our example, we used Nokia PC Suite version 3.0, since it is what the Nokia 3650 supports. Below, you will find some illustrations of the tasks that you can perform with the Nokia PC Suite

## Backup/Restore

Using the Nokia PC Suite, you can backup/restore your phone settings and critical information such as contacts, calendar, images, and so on. As shown below, you can select to backup/restore all data, or you can select only specific data.



## Synchronize

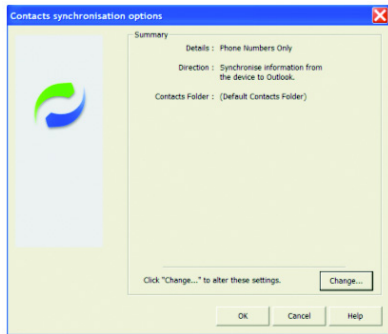
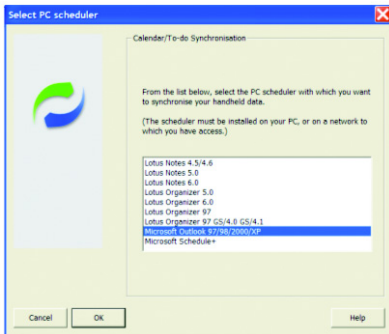
The Synchronize function allows you to synchronize calendar and contact information between your cell phone and computer using Microsoft Outlook and Lotus.

1. The first thing you have to do is select the type of information you wish to synchronize. Once you make your selection, click Sync Now.

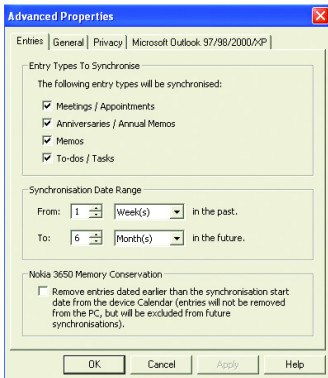


## Operation

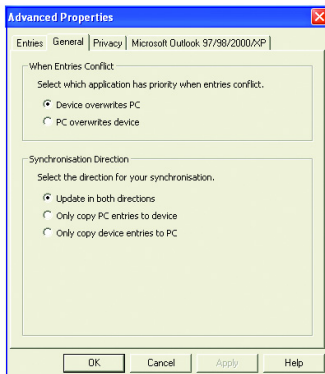
- Next, select the Application you use for your calendar/contacts from the list below, and then click OK. In our example, we use Microsoft Outlook 2000.
- On the summary window, you are given a list of the tasks that will be performed. If you wish you customize the tasks to be performed, click on the Change button.



4. On the Entries tab, you can specify the information to synchronize and the date range

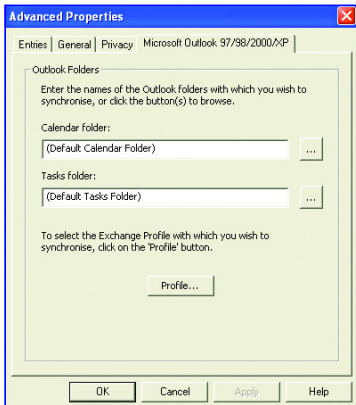


5. On the General tab, you see the following window.

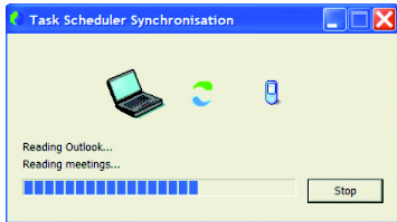


## Operation

6. On the Entries tab, you can specify the information to synchronize and the date range



7. When you are done making your changes, click OK to proceed, and your selected tasks will be performed. Your PC and cell phone calendar/contact information will now be synchronized.



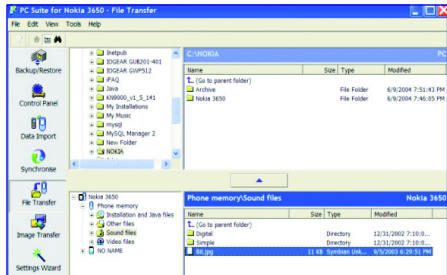
Note: If you get any errors, you may not have your application (ex: Outlook) setup correctly. Please double-check all your selections and try again.



## File Transfer

With file transfer, you can transfer files between your phone and computer. Normally files stored on your PC are much larger than what your cell phone's memory is capable of storing. Therefore, some file types (such as video, audio, pictures) are automatically converted/compressed when transferring from your PC to your phone.

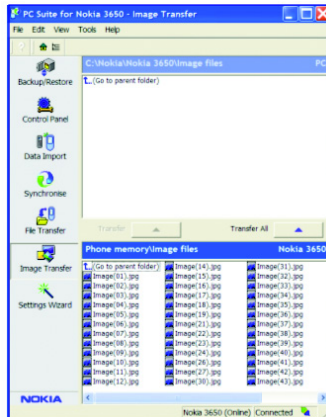
To transfer a file, simply select the file and then click the button in the middle as shown below.



# Operation

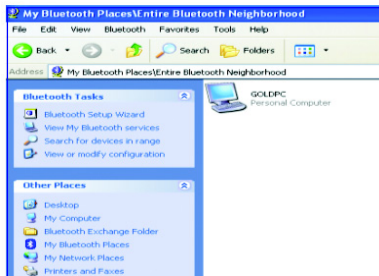
## Image Transfer

With Image Transfer, you can copy image files between your phone and computer. For example, you can transfer all the pictures that you take on your phone, to your PC. You can also transfer pictures stored on your PC to your cell phone. If an image is too big to fit on your phone, it will be automatically converted to fit on your phone.



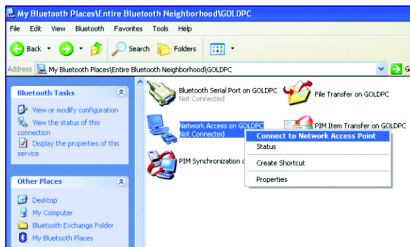
## How to Connect to Network Access (Bluetooth - Enabled Computer)

1. Double-click on the IOGEAR Bluetooth Icon in the system tray.
2. Next, click on Search for devices in range. As illustrated below, the Bluetooth-enabled computer is found.

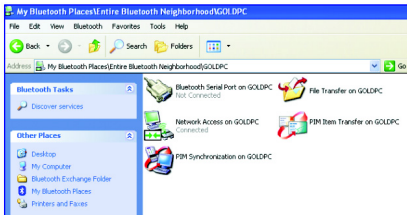


## Operation

3. Double click on the device to display a list of its services. To establish a network connection, right click on Network Access and select Connect to Network Access Point.
4. When the connection is being established, you will be prompted to accept/deny the connection on your other computer. To allow access, click OK.



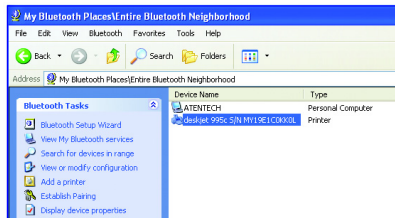
- Once you establish the connection, the Network Access icon will turn green and say “Connected.” Your device will be able to share its Internet connection (if the device has Internet access) and files. If a pass key has been set by either device, the pass key is required to connect both Bluetooth™ enabled devices.
- At any time, when service requests are made from or to another Bluetooth™ device (e.g. File Transfer, Network Access, Serial Port Connection, etc.), a pass key is required to connect the devices. This authentication is not required once devices are paired (see *Chapter: What's Pairing?*).



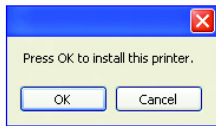
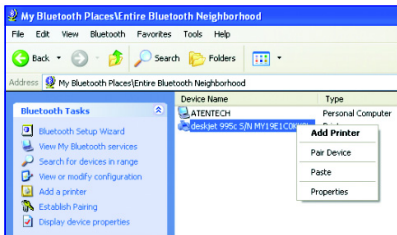
## Operation

### How to connect to a Bluetooth™ Enabled Printer

1. Double-click on the IOGEAR® Bluetooth™ icon in the system tray.
2. Next double click on “Find Bluetooth™ Devices”.

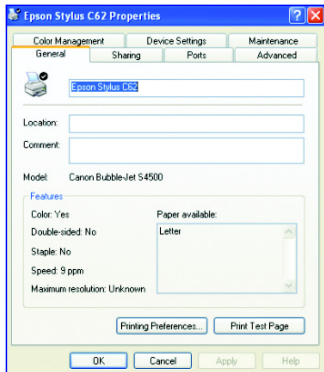


3. Double click on the printer you wish to connect to.
4. Click OK to install the printer. If your printer is already installed, the printer properties window will appear.



## Operation

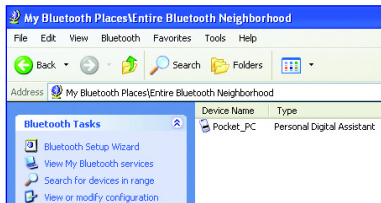
5. If your printer is already installed, the printer properties window will appear. Click on [Print Test Page] to print a test page.





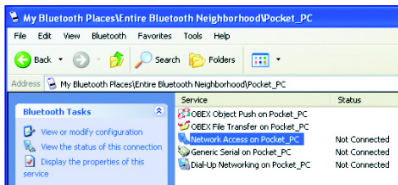
## How to connect to a PDA (Personal Digital Assistant)

1. Double-click on the IOGEAR® Bluetooth™ icon in the system tray.
2. Next double click on “Find Bluetooth™ Devices”.



## Operation

- Once the search is finished, double click on the PDA to view the services it offers.



- At any time, when service requests are made from or to another Bluetooth™ device (e.g. File Transfer, Network Access, Serial Port Connection, etc.), a pass key is required to connect the devices. This authentication is not required once devices are paired (see *Chapter: What's Pairing?*).

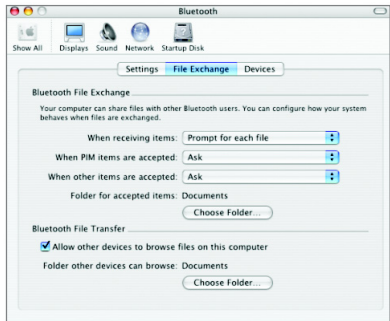
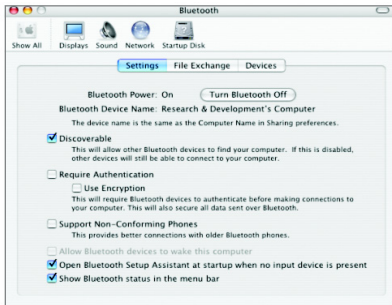
## How to add Bluetooth™ to your MAC OS X system (requires OS 10.2.x or later)

1. Plug in the Bluetooth™ USB Adapter to any available USB port on your PowerBook G4, iBook, PowerMac G4 or iMac (in the case of the PowerMac G4 and iMac, you can attach the Bluetooth™ USB Adapter to the free USB port on your keyboard).
2. Open System Preferences and locate the Bluetooth icon under Hardware. Double-click on the Bluetooth icon to bring up the Bluetooth window.

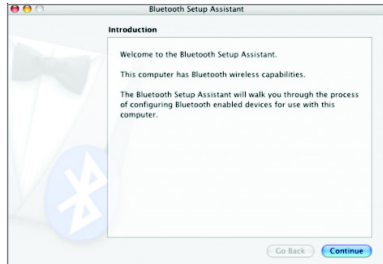
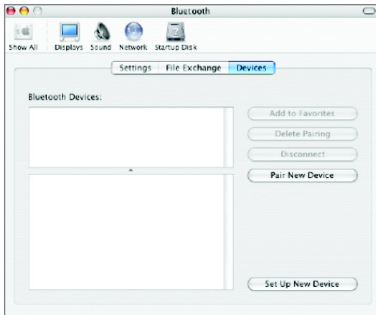


## Operation

- Under the settings tab, make sure that the Bluetooth device is set to “discoverable” and change any other settings according to your preference.
- On the File Exchange tab, you may customize how you want to share files with other Bluetooth devices and give the proper permissions.

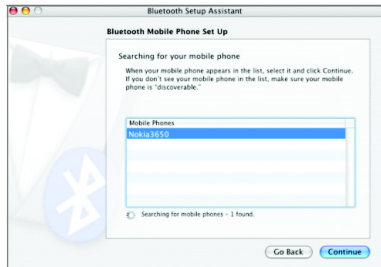
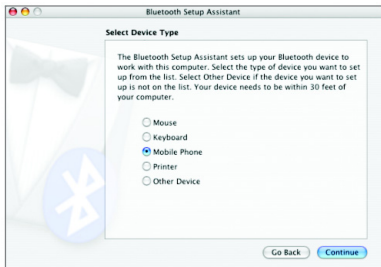


5. On the devices tab, you may pair with your Bluetooth device(s) or search for other Bluetooth devices available to you. In this example, we will connect to a Bluetooth cell phone. The procedure for other Bluetooth devices is similar. Simply follow the Bluetooth setup assistant.
6. To proceed with the detection of your Bluetooth phone, click on Continue.

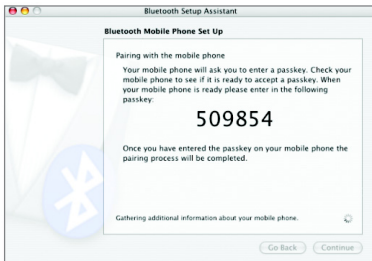


## Operation

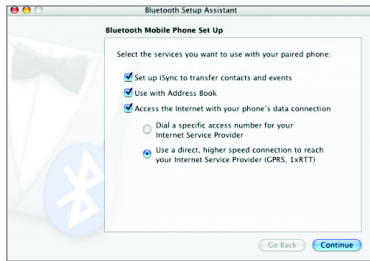
- On the next window, select the type of device you want to configure. In this case, we want to configure a Mobile Phone.
- Once the system is done searching, it will display a list of all the Bluetooth phones available. Select the desired phone, and click Continue to proceed.



9. On the next window, the Setup Assistant will generate a passkey to pair your computer with your Bluetooth phone. Enter this key on the phone when prompted.

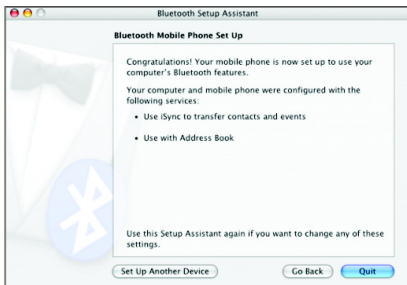


10. Next, select the services you want to setup and then click Continue.



## Operation

11. Your computer is now set up to use your Bluetooth™ phone. Click the Quit button to complete the installation or click “Set up Another Device” to add another Bluetooth™ device.



Please refer to the Apple website for further information on Bluetooth™ support and updates at <http://www.info.apple.com>.



## What is “Pairing ?”

Pairing is a Bluetooth™ function that enables Bluetooth™ devices to remain permanently linked to another.

### What “Pairing” means in terms of security?

As mentioned, Pairing allows devices to permanently link with each other. The pass key authentication will also be perpetuated in Pairing, meaning that devices will not ask for a pass key once they are paired. Paired devices will remain linked, even if other paired devices are turned off. Once a paired device turns back on, it is ready to be used and service requests will not ask for the pass key again. The built-in 128 bit security encryption of Bluetooth™ assures the privacy of your paired devices. Note: If devices are unpaired, it is necessary to enter a pass key each time a service request is made from or to another Bluetooth™ device.

## Operation

### Pairing Devices

1. Right-click on the Bluetooth™ device and select on “Pair device”.
2. Enter a **Pass Key** when asked.

**Note:** The Pass Key on both devices must be the same!

Example: If Device 1 tries to pair with Device 2, Device 1 will prompt for a Pass Key. Enter any Pass Key. Device 2 will then ask for a Pass Key. Enter the Pass Key, which has been set for Device 1. Done!

3. The device is now paired with your computer.

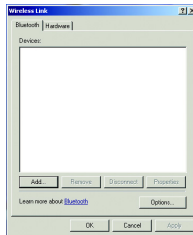
### Unpairing Devices

1. Right-click on the paired Bluetooth™ device in the list and select on “Unpair Device”.
2. The device is now unpaired

## Microsoft® Stack for Bluetooth™

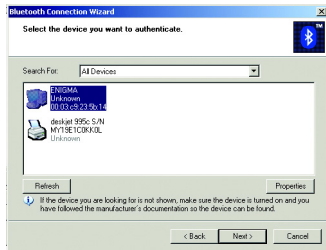
Microsoft® has released Windows® XP support for Bluetooth™ wireless technology. Support for Bluetooth™ wireless technology is available only for Windows® XP Service Pack 1 (SP1) or later versions. The HID, HCRP, and DUN profiles are implemented.

1. First, open the Control Panel and double click on the Wireless Link icon.
2. Next, a window will appear displaying a list of devices your computer is connected to. To add devices, click [Add] to start the Bluetooth™ Connection Wizard.

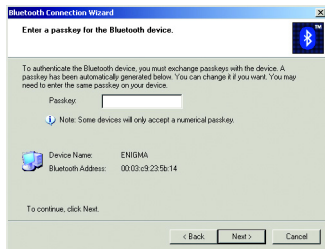
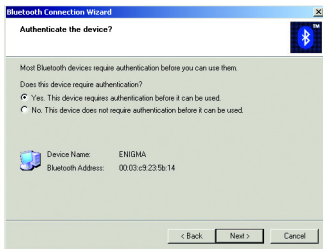


## Operation

- Once the Bluetooth™ Connection Wizard starts, click [Next].
- The Wizard will search for available Bluetooth™ devices. Highlight the device you wish to connect to and click [Next].

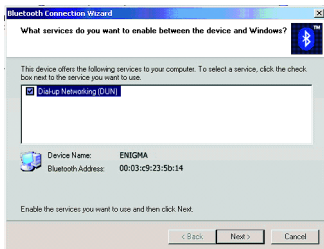


- The Wizard will then ask you whether the device requires authentication. Select the appropriate radio button and click [Next].
- If the device you wish to connect to requires a passkey, enter it in the text box and click [Next].



## Operation

7. Select the service you wish to connect to and click [Next].
8. Once you've authenticated with the device and selected the service you wish to use, click [Finish] to complete the Bluetooth™ Connection Wizard.



## Specification

Function	GBU211/ GBU311
<b>Connectors</b>	USB Type A 1
<b>Data Rate</b>	Up to 723 Kbps
<b>Frequency Band</b>	2.402 GHz - 2.4835 GHz Unlicensed ISM band
<b>Humidity</b>	10% - 90% non-condensing
<b>Interface</b>	USB
<b>Modulation</b>	GFSK (Gaussian Frequency Shift Keying)
<b>Operating Temperature</b>	0°C - 50°C
<b>Security</b>	Pairing, Encryption, Authentication
<b>Sensitivity</b>	Minimum - 76dB
<b>Transmission Power</b>	20 dBm max with power control (Class 1)
<b>Weight</b>	0.4 oz. (2 units for GBU302)

## Technical Support

If you need technical support, please check out our IOGEAR® Tech Info Library (T.I.L.) at **[www.iogear.com/support](http://www.iogear.com/support)** for the latest tips, tricks, and troubleshooting. The IOGEAR® T.I.L. was designed to provide you with the latest technical information about our products. Most of the answers to your questions can be found here, so please try it out before contacting technical support.

Technical support is available Monday through Friday from 8:00 am to 5:00 pm PST and can be reached at (949) 453-8782 or by email **[support@iogear.com](mailto:support@iogear.com)**.



## Radio & TV Interference Statement

**WARNING!!!** This equipment generates, uses and can radiate radio frequency energy and, if not installed and used in accordance with the instruction manual, may cause interference to radio communications. This equipment has been tested and found to comply with the limits for a Class B computing device pursuant to Subpart J of Part 15 of FCC Rules, which are designed to provide reasonable protection against such interference when operated in a commercial environment. Operation of this equipment in a residential area is likely to cause interference, in which case the user at his own expense will be required to take whatever measures may be required to correct the interference.

## Limited Warranty

IN NO EVENT SHALL THE DIRECT VENDOR'S LIABILITY FOR DIRECT, INDIRECT, SPECIAL, INCIDENTAL OR CONSEQUENTIAL DAMAGES RESULTING FROM THE USE OF THE PRODUCT, DISK OR ITS DOCUMENTATION EXCEED THE PRICE PAID FOR THE PRODUCT.

The direct vendor makes no warranty or representation, expressed, implied, or statutory with respect to the contents or use of this documentation, and especially disclaims its quality, performance, merchantability, or fitness for any particular purpose.

The direct vendor also reserves the right to revise or update the device or documentation without obligation to notify any individual or entity of such revisions, or updates. For further inquires please contact your direct vendor.





**Contact info.**

---

23 Hubble • Irvine, CA 92618 • (P) 949.453.8782 • (F) 949.453.8785 • [www.iogear.com](http://www.iogear.com)

Download from [Www.Somanuals.com](http://Www.Somanuals.com). All Manuals Search And Download.

## Free Manuals Download Website

<http://myh66.com>

<http://usermanuals.us>

<http://www.somanuals.com>

<http://www.4manuals.cc>

<http://www.manual-lib.com>

<http://www.404manual.com>

<http://www.luxmanual.com>

<http://aubethermostatmanual.com>

Golf course search by state

<http://golfingnear.com>

Email search by domain

<http://emailbydomain.com>

Auto manuals search

<http://auto.somanuals.com>

TV manuals search

<http://tv.somanuals.com>