

Brother StartCard

For FAX 560, FAX 580MC, MFC 660MC

If you cannot solve a problem;
Refer to **Frequently Asked Questions (FAQs)** on Brother World Wide Web;

URL: <http://www.brother.com>

Call Brother Customer Service at;

USA: 1-800-284-4329

From within Canada: 1-800-853-6660

From within Montreal: 1-514-685-6464

THANK YOU!

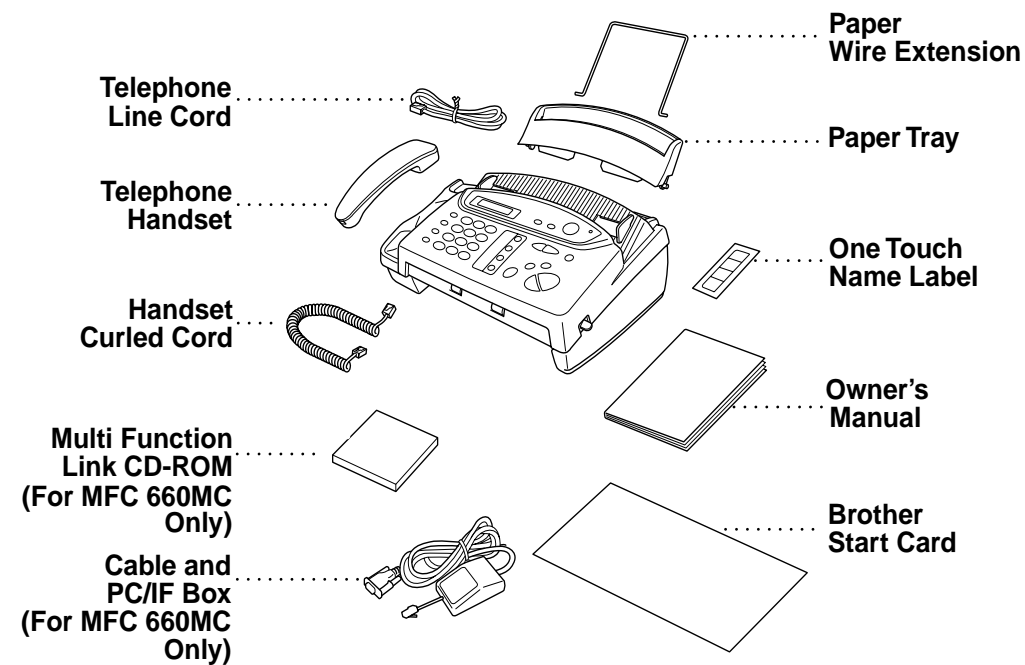
CONGRATULATIONS ON PURCHASING A BROTHER MACHINE. WE ARE SURE YOU WILL BE THRILLED WITH THE CONVENIENT WAY YOUR NEW FAX PERFORMS SO MANY TASKS WITH DAZZLING RESULTS!

Follow these simple instructions in numerical order.

For more details, press **Copy/Help** then **Start** on your fax or see your Owner's Manual.

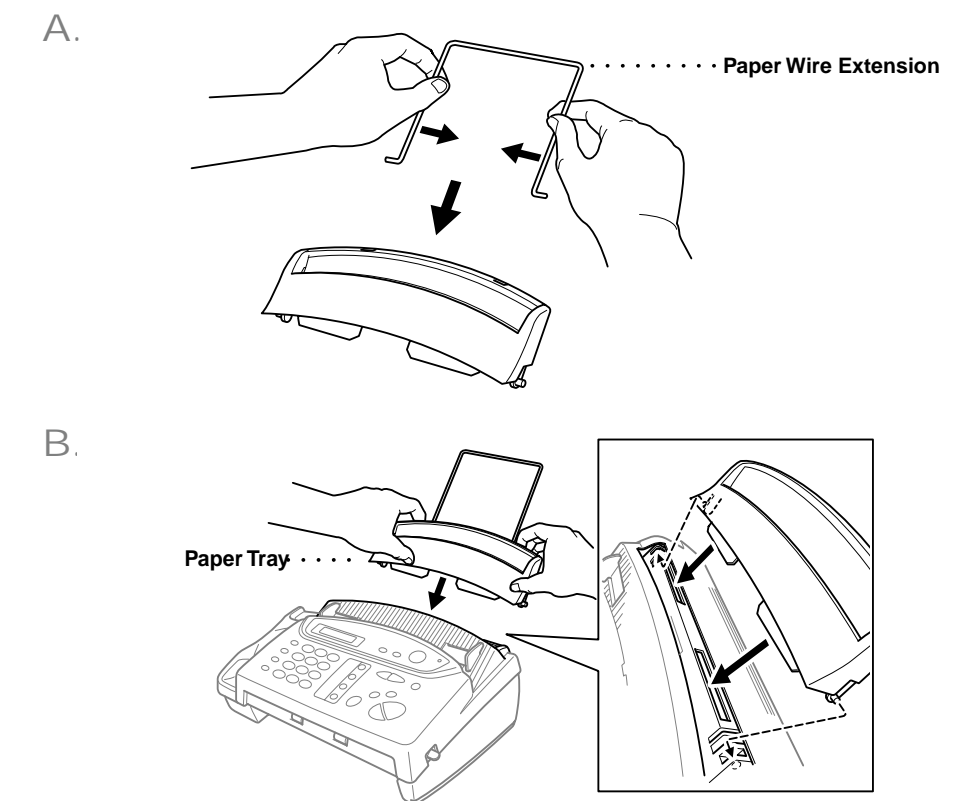
1 Packing List

Check that you have the following items:



Keep the packing materials for possible future transport. If you do not pack the machine properly, it may void your warranty.

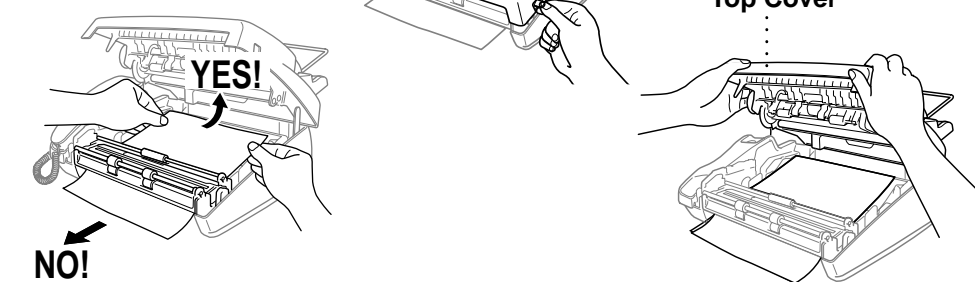
2 Attach Tray and Extensions



3 Remove Ribbon Protection Sheet

A. Open the top cover by lifting the gray lever on the right side of the top cover.

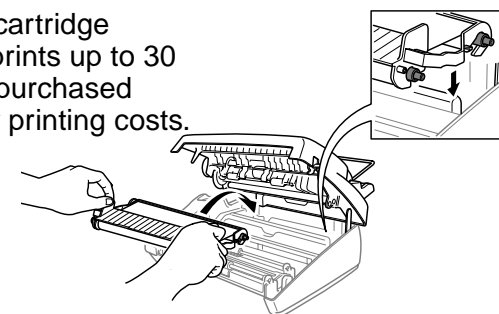
B. Remove the ribbon protection sheet.



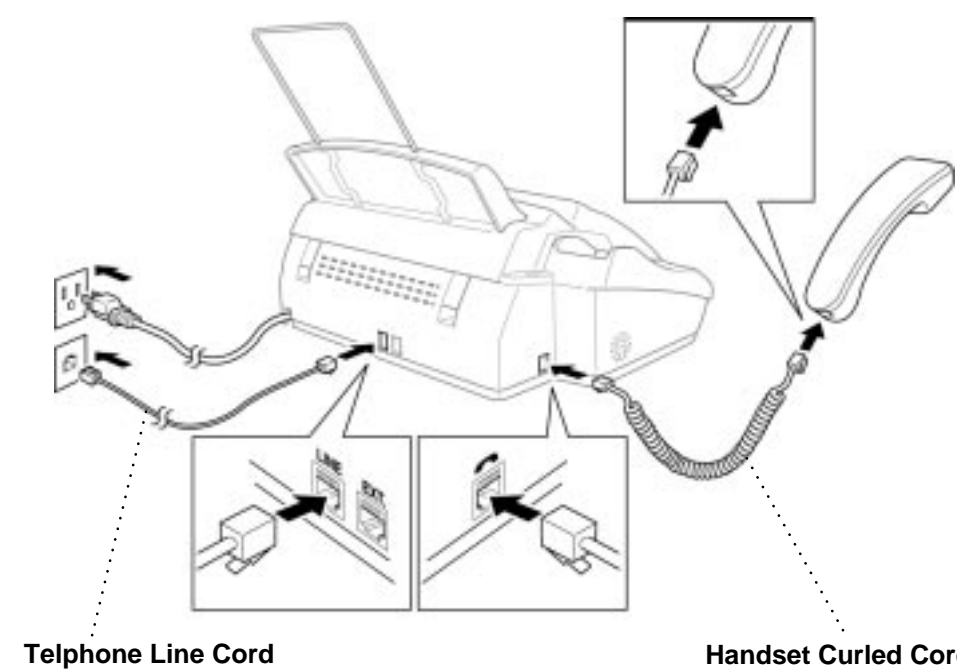
C. Remove the print cartridge and notice how the ribbon is wound on the print cartridge frame. This is a starter ribbon - prints up to 30 pages - and make sure that you purchased additional ribbons to reduce your printing costs.

D. Re-install cartridge.

E. Close the top cover.



4 Install Phone Line and Power Cord



Telephone Line Cord

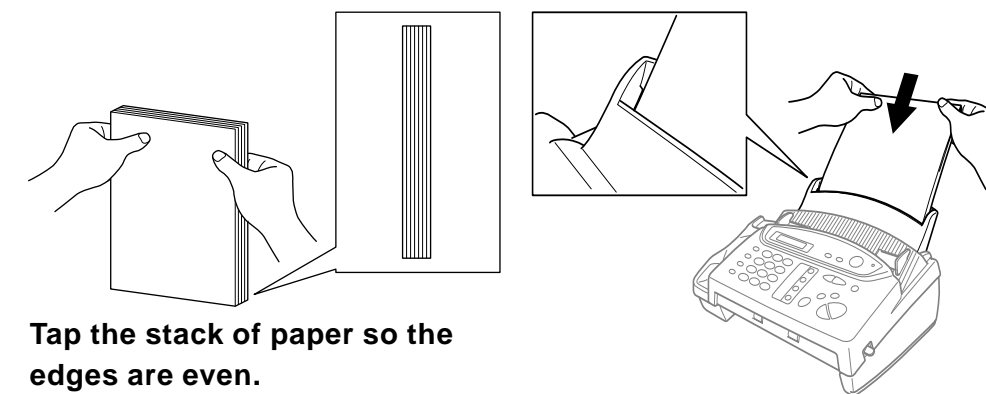
Handset Curled Cord

5 Load Paper

The maximum number of 20 lb. sheets you can load depends on the paper size, either 50 Letter or 30 Legal.

Temperature: 68 °F (20 °C)
Humidity: 60 %

A. Place paper in the paper tray.

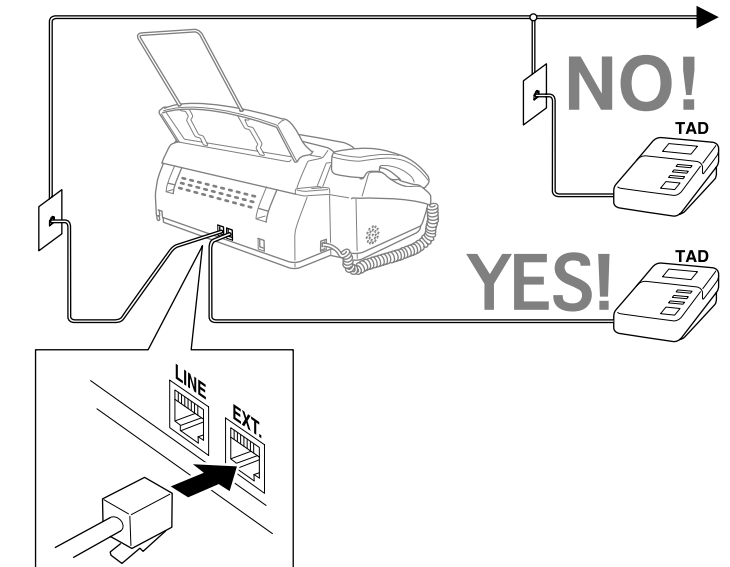


Tap the stack of paper so the edges are even.

Acceptable Paper

Size: Letter and Legal
Weight: 17 lb. - 24 lb.
Thickness: .0031 inches - .0039 inches

6 If you are sharing one phone line with an external telephone answering device, connect it now



For more details, see "Connecting an External Telephone Answering Device" in Chapter 2 of the Owner's Manual.

7 Select an Answer Mode

Press **Mode** until the correct mode for your setup is displayed.

FAX ONLY The machine automatically answers every call as a fax.

FAX/TEL For Receiving fax and voice calls on one line.

TAD: ANSWER MACH. (For FAX 560 only) An External TAD (telephone answering device) answers every call and stores voice messages in memory, fax messages are printed. An external telephone operates as if it is in MANUAL Mode when it is connected to your Brother Machine.

MANUAL You control the phone line and must answer every call yourself.

For more details, see chapter 5 of the owner's manual.

8 Set Date and Time

A. Press **Function/Set**, **1**, **1**.

ENTER YEAR:XX

B. Enter the last two digits of the year and press **Function/Set**.

ENTER MONTH:XX

C. Enter two digits for the month and press **Function/Set**.

ENTER DAY:XX

D. Enter two digits for the day and press **Function/Set**.

ENTER TIME:XX:XX

E. Enter the time in 24-hour format and press **Function/Set**. Then **Stop**.

9 Set Station ID

A. Press **Function/Set**, **1**, **2**.

FAX:

B. Enter your fax number (up to 20 digits), and press **Function/Set**.

TEL:

C. Enter your telephone number (up to 20 digits), then press **Function/Set**.

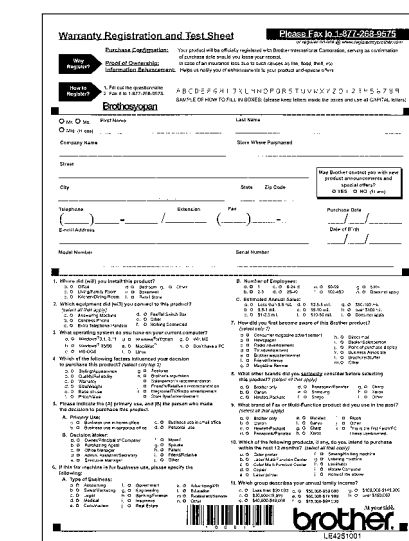
NAME:

D. Enter your name (up to 20 characters), and press **Function/Set**.

E. Press **Stop** to exit.

Key	once	twice	three times	four times	five times
1	A	B	C	2	A
2	D	E	F	3	D
3	G	H	I	4	G
4	J	K	L	5	J
5	M	N	O	6	M
6	P	Q	R	7	P
7	T	U	V	8	T
8	W	X	Y	9	W

10 For the USA only, complete the Warranty Registration and Test Sheet...



...and fax it to Brother
at 1-877-268-9575

Free Manuals Download Website

<http://myh66.com>

<http://usermanuals.us>

<http://www.somanuals.com>

<http://www.4manuals.cc>

<http://www.manual-lib.com>

<http://www.404manual.com>

<http://www.luxmanual.com>

<http://aubethermostatmanual.com>

Golf course search by state

<http://golfingnear.com>

Email search by domain

<http://emailbydomain.com>

Auto manuals search

<http://auto.somanuals.com>

TV manuals search

<http://tv.somanuals.com>